

# burda style magazine 03/2010 Kimono Dress

By: burda style magazine

<http://www.burdastyle.com/projects/burda-style-magazine-032010-1>

---

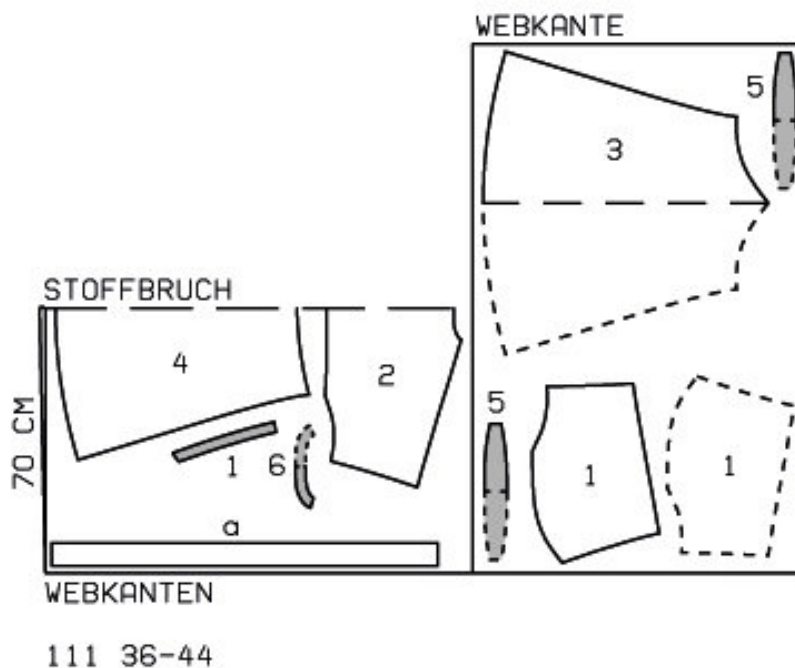
Kimono Dress. For more information on this and other burda style magazine patterns, please see this dedicated blog post.

## Materials

Cotton Batiste

---

## Step 1 — Preparation



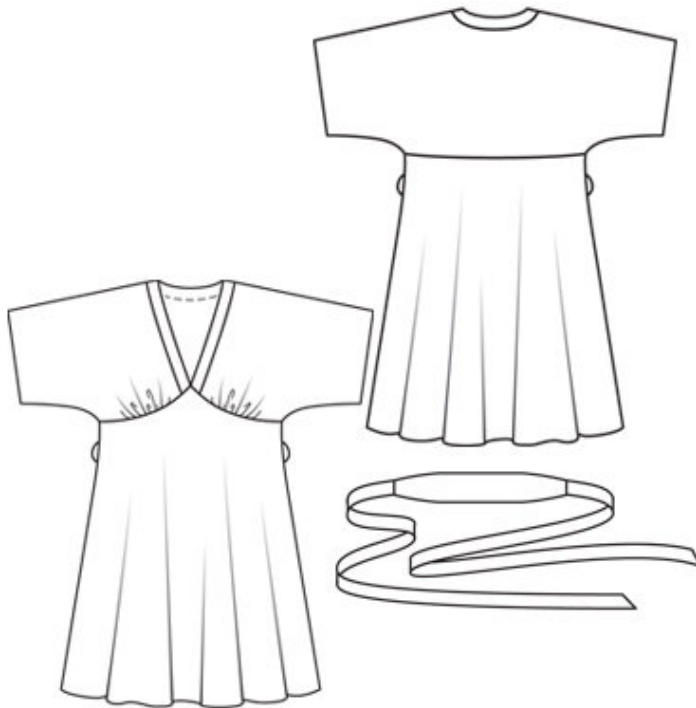
Trace the pattern pieces from the pattern sheet. Follow lines and details for style 111. Trace the band from piece 1 as a separate pattern piece.

Seam and hem allowances:

Seams, edges and hem 1.5 cm (5/8 in).

---

## Step 2 — Cutting Out



1 front with attached sleeve 2x

â— front neck band 2x

2 back with attached sleeve,

â— on a fold 1x

6 back neck band, on a fold 1x

3 front skirt panel, on a fold 1x

4 back skirt panel, on a fold 1x

5 belt piece, on a fold 2x

a) 2 tie bands, 100 â— 100 â— 105 â— 105 â— 110 cm (39 1/2 â— 39 1/2 â— 41 1/2 â— 41 1/2  
â— 43 1/2 ins) long, 6 cm (2 1/2 ins) wide, finished width 3 cm (1 1/4 ins).

Interfacing: See pattern layout.

---

## Step 3 — Shoulder and Sleeve Seams

Stitch shoulder seams and top sleeve seams as continuous seams. Stitch underneath sleeve seams, beginning and ending exactly at corner (seam number 2). Press seam allowances open.

---

## Step 4 — Neck Bands

Stitch front neck bands to back neck band. Pin band to inside neck edge, right side facing wrong side. Stitch along neck edge. Trim allowances. Turn band to right side, turn in and edgestitch in place.

---

## Step 5 — Gathering lower edges of fronts

Gather lower edge of fronts, between asterisks, to 6.5 cm (23/8 ins).

---

## Step 6 — Stitching Skirt

Stitch side seams of skirt. Fold allowance at top point of skirt front down horizontally and press. Stitch skirt to dress bodice. Press seam allowances down.

---

## Step 7 — Hem

Press hem and sleeve hem allowances to inside, turn in, and stitch.

---

## Step 8 — Belt and Belt Loops

Press seam allowances at ends of one belt piece (underside) to wrong side. Lay belt pieces right sides facing. Stitch upper and lower edges together. Turn belt right side out and press edges. Fold tie bands lengthwise, right side facing in. Stitch along lengthwise edge and across one end of each. Trim seam allowances. Turn tie bands right side out and press. Stitch tie bands to ends of top side of belt. Lay seam allowances onto belt piece and press. Sew narrow edges of lower belt piece in place, by hand. Make thread loops, 4.5 cm (17/8 ins) long, over side seams of dress, as marked. For each loop, stretch 3— 4 threads, then cover them closely with buttonhole stitch, by hand.

---

**BurdaStyle**

burda style magazine 03/2010 Kimono Dress