

4/2010 3/4-sleeve, V-neck Dress

By: burda style magazine

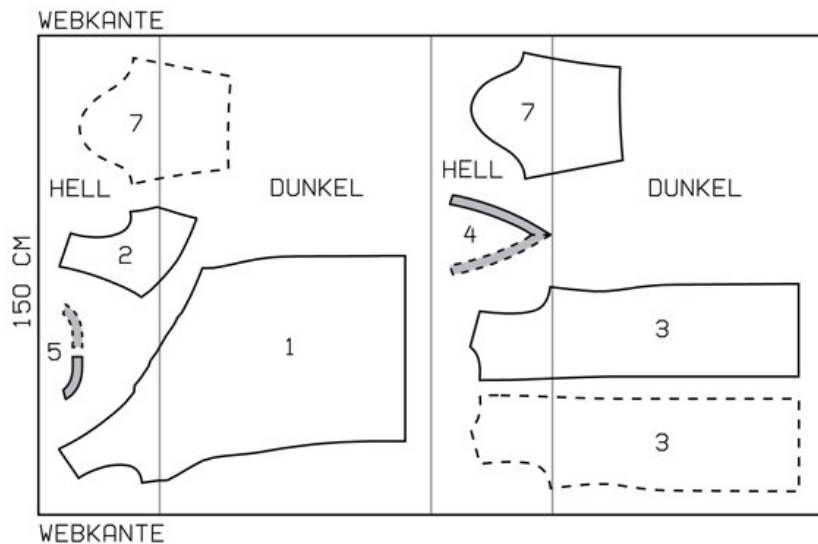
<http://www.burdastyle.com/projects/42010-34-sleeve-v-neck-dress>

3/4-sleeve, V-neck Dress burda style magazine patterns FAQ

Materials

Crinkle linen ombr

Step 1 — Preparation

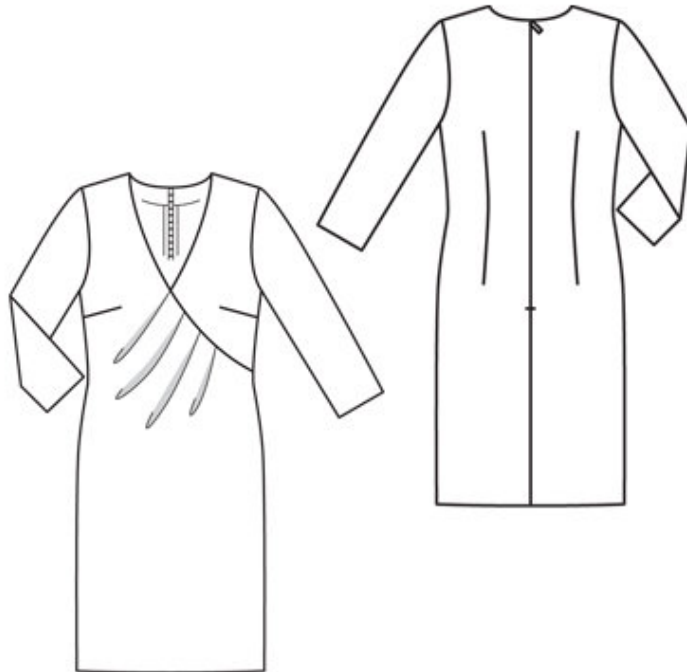


109 38-46

Trace the pattern pieces from the pattern sheet. Glue pieces 1 and 1a together on the joining lines. The pleat arrows on piece 1 are marked for size 38. Mark pleat arrows for other sizes according to size lines. Seam and hem allowances:

Seams and edges 1.5 cm (5/8 in), hem and sleeve hems 4 cm (15/8 ins). Flare sleeve hem allowances.

Step 2 — Cutting Out



1front 1x
2upper left front 1x
3back 2x
4front neck facing, on a fold 1x
5back neck facing 2x
7sleeve 2x
Interfacing: Iron onto facing pieces.

Step 3 — Darts

Stitch darts. Press bust darts down.
Press back darts toward centre back. Fold pleats in front in arrow direction and baste.

Step 4 — Fronts

Stitch upper left front to front, exactly from centre front. Press seam allowances up.

Step 5 — Zipper

Sew invisible zip to back opening edges. Stitch centre back seam from lower edge to zip.

Step 6 — Stitch side seams, shoulder seams and facing seams

Stitch side seams, shoulder seams and facing seams. Press seam allowances open.

Step 7 — Neck edge

Pin facing right sides together with neck edge of dress. Turn facing at zip opening back, about 5 mm (3/16 in) before edge of opening, and pin to upper edge. Lay allowances on opening edges of dress outward and pin to neck edge, over facing. Stitch along neck edge. Trim seam allowances and clip into point of neck edge. Turn allowances at edges of opening to inside. Lay facing up and stitch to seam allowances, as far as possible, close to seam. Turn facing to inside and sew to zip tapes and to shoulder seams.

Step 8 — 3/4— sleeves

Sew sleeve hems by hand.

Step 9 — Sleeve caps

Set in sleeves, easing sleeve caps.

Step 10 — Hem

Press hem allowance to inside and sew in place by hand.

BurdaStyle

4/2010 3/4-sleeve, V-neck Dress