

4/2010 Long-sleeve tunic shirt with pleating detail

By: burda style magazine

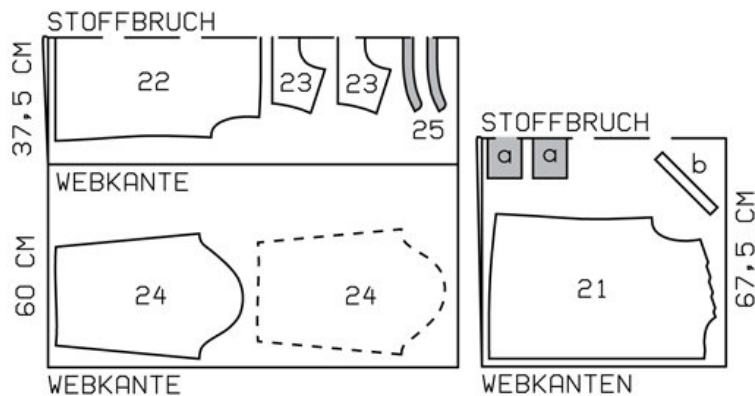
<http://www.burdastyle.com/projects/42010-long-sleeve-tunic-shirt-v>

Long-sleeve tunic shirt with pleating detail burda style magazine patterns FAQ

Materials

batiste

Step 1 — Preparation



110 A 38-46

Trace the pattern pieces from the pattern sheet. Note different hem lines for views A and B.

The buttonholes on piece 21 are -marked for size 38. For sizes 40 — 46, mark the top buttonhole the same distance from neck edge as for size 38. The bottom buttonhole is in the -same place for all sizes. Space the other buttonholes evenly in between.

Seam and hem allowances:

Seams and edges 1.5 cm (5/8 in), hem 2 cm (3/4 in), no allowance on length-wise edge of front self-facing.

Step 2 — Cutting Out



21 front 2x

22 back, on a fold 1x

23 yoke, on a fold 2x

24 sleeve 2x

25 standing collar, on a fold 2x

a) 2 cuffs, 23.5 — 24 — 24.5 — 25 — 25.5 cm (9 1/4 — 9 1/2 — 9 3/4 — 10 — 10 1/8 ins) long, 10 cm (4 ins) wide, finished width 5 cm (2 ins),

b) 2 bias binding strips for sleeve vents, 23 cm (9 1/8 ins) long, 3 cm (1 1/4 ins) wide (incl. allowance).

Interfacing: See pattern layout.

Step 3 — Pleats

Fold pleats in fronts in arrow direction and baste. Topstitch 5 mm (3/16 in) from pleat folds, from upper edge to pleat mark. For the box pleat at center back, fold centre back piece lengthwise, with wrong side facing in, matching marked stitching lines. Stitch stitching lines together. Unfold back. Press pleat so that it is centred over seam. Baste pleat to upper back edge.

Step 4 — Yoke

Pin yoke pieces to upper edge of back, pinning one yoke to outside and other yoke to inside. Stitch yokes in place and press up. Stitch outer yoke to upper edges of fronts. Press seam allowances onto yoke. Turn in inside yoke edges and baste along joining seams. Topstitch yoke close to joining seams. Baste open edges of yoke together.

Step 5 — Side seams and facings

Stitch side seams. Press hem allowance to inside, turn in and stitch in place. Fold self-facings to inside on fold line and press. Lay doubled facings to inside, baste and press. Top-stitch 2.5 cm (1 in) from front edges.

Step 6 — Standing collar

Lay collar pieces right sides facing. Stitch together on front and upper edges, beginning and ending stitching in front, exactly on seam line of joining edge. Trim seam allowances. Turn collar right side out and press. Stitch outer collar piece to neck edge. Turn in edge of inside collar piece and baste along join-ing seam. Topstitch collar close to all edges.

Step 7 — Sleeve vents

Cut sleeve vents as marked. Spread cut edges open to a straight line and stitch to one lengthwise edge of binding strip, as narrowly as possible. Press binding strip over joining seam into vent, fold under to a width of 7 mm (1/4 in), turn in and sew to joining seam. Mitre binding on inside at top of sleeve vent. Lay binding to inside at front edge of vent and baste to lower edge. Fold pleats in lower edges of sleeves and baste. Stitch sleeve seams.

Step 8 — Cuffs

Stitch outer halves of cuffs to lower edges of sleeves. Press seam allowances of joining seams and of other long edges of cuffs onto cuffs. Fold cuffs lengthwise, right side facing in, and stitch across ends. Turn right side out. Baste inside edges in place. Topstitch cuffs close to all edges.

Step 9 — Set in sleeves

Set in sleeves.

Step 10 — Buttonholes

Work buttonholes in right front. Work 2 buttonholes in front end of each cuff — 1.5 cm (5/8 in) and 3.5 cm (1 1/2 ins) below joining seam.

BurdaStyle

4/2010 Long-sleeve tunic shirt with pleating detail