

04/2010 Short-sleeve Polo Shirt

By: burda style magazine

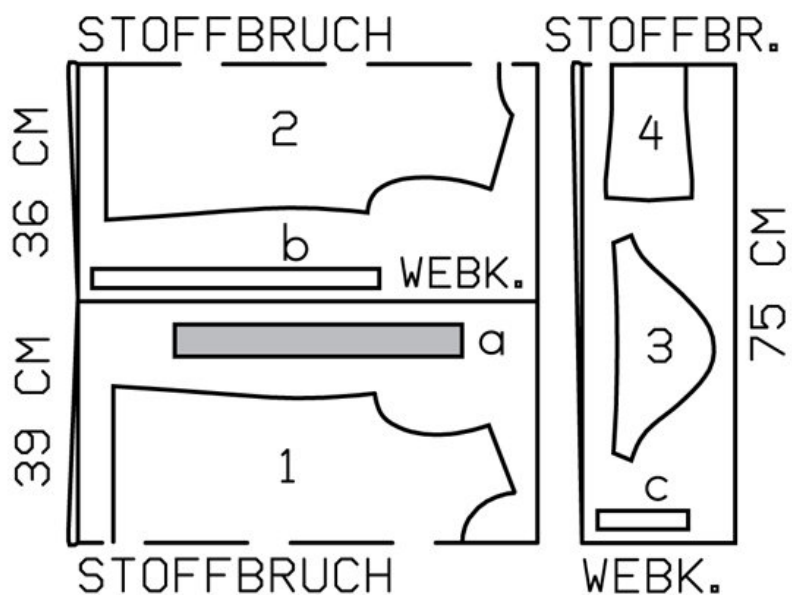
<http://www.burdastyle.com/projects/042010-short-sleeve-polo-shirt>

Short-Sleeve Polo Shirt burda style magazine patterns FAQ

Materials

Stretch jersey

Step 1 — Preparation



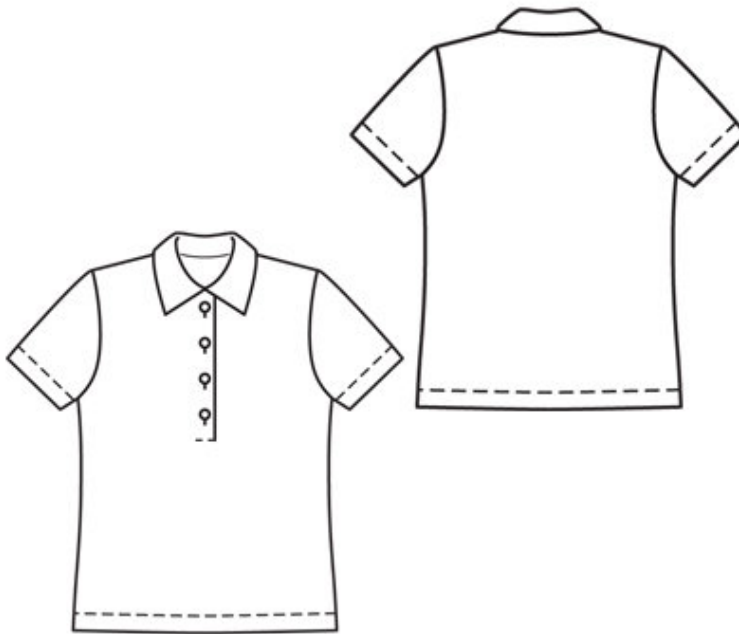
113 A 34-44

Trace the pattern pieces from the pattern sheet.

Seam and hem allowances:

Seams and edges 1.5 cm (5/8 in), hem and sleeve hems 4 cm (15/8 ins). Flare sleeve hem allowances.

Step 2 — Cutting out



1 front, on a fold 1x

2 back, on a fold 1x

3 sleeve 2x

4 collar, on a fold 1x

a) fastening band, 43 — 44 — 45 — 46 — 47 — 48 cm (17 — 17 1/4 — 17 3/4 — 18 1/4 — 18 1/2 — 19 ins) long, 5 cm (2 ins) wide, finished width 2.5 cm (1 in),

b) facing strip for neck edge, 43 — 44 — 45 — 46 — 47 — 48 cm (17 — 17 1/4 — 17 3/4 — 18 1/4 — 18 1/2 — 19 ins) long, 3 cm (1 1/4 ins) wide (incl. allowance),

c) 2 backing strips for shoulder seams 14 cm (5 1/2 ins) long, 2 cm (3/4 in) -wide (incl. allowance).

Interfacing: See pattern layout.

Step 3 — Shoulders

Note: Stitch seams with a special stretch stitch or at a narrow zigzag setting. Stitch hems in place with a twin machine needle to keep them elastic.

Baste backing strips to wrong side of front shoulder edges. Stitch shoulder seams. Trim seam allowances to 7 mm (1/4 in) wide, neaten together, and press onto back

Step 4 — Front

Mark slash line for slit on left front half. If you are working with striped fabric, centre bottom end of slit (marking) exactly on a stripe. Iron a strip of inter-facing, about 2 cm (3/4 in) -wide, to wrong side of fabric, over slit marking. Slash slit open from upper edge to 2 mm (a scant 1/8 in) before -marking. Spread cut edges open to a straight line and stitch right sides together with one lengthwise edge of fastening band, stitching as narrowly as possible at end of slit. Match stripes if you are working with striped fabric. Press seam allowances onto band. Press allowance on other edge of band to inside — band should be exactly 5 cm (2 ins) wide (twice the finish-ed width). Fold band in half lengthwise and press, wrong side facing in. Unfold band again. At right edge of slit, trim away pressed-under -seam allow-ance on inside edge of band, as far as end of slit. Then baste inside edge next to joining seam.

Step 5 — Collar

Fold collar on fold line, right side facing in, and stitch across ends. Turn collar right side out. Baste edges of collar together to neck edge on the right from marked centre front, on the left up to centre of outer half of band. Lay doubled band outward on the right and pin to neck edge, catching collar. Lay inside half of band at left edge of slit outward and pin to neck edge, catching collar. Fold -facing strip lengthwise, right side -facing out, and press. Pin doubled facing strip to neck edge, over collar, so that fold edge of strip lies on collar, 1 cm (3/8 in) past seam line, and ends lie on band. Stitch along neck edge. Trim seam allowances. Turn doubled band at right edge of slit to inside and turn facing strip on neck edge to inside and lay collar up. Turn inside half of band at left edge of slit to inside and sew to joining -seam. Press right edge of slit. Lay left edge of slit with band to inside. At right edge of slit, top-stitch across front, from end of slit to the width of the band, catching band which lies below. Lay left edge of slit with band up again. Top-stitch neck edge 7 mm (1/4 in) from collar joining seam, beginning on the right, 2.5 cm (1 in) behind front edge, and ending at the left, at band joining seam.

Step 6 — Side Seams and sleeves

Stitch side seams and sleeve -seams.

Step 7 — Hem

Lay hem allowances of top/dress and sleeves to inside. Stitch hems from right side with the twin machine needle, stitching 3 cm (1 1/4 ins) from fold edge.

Step 8 — Sleeves

Set in sleeves.

Step 9 — Buttonholes

Work 4 vertical buttonholes in front slit edge, along centre front. Space top buttonhole 1.2 cm (1/2 in) below neck edge and space bottom buttonhole 4 cm (15/8 ins) above end of slit.

BurdaStyle

04/2010 Short-sleeve Polo Shirt