

04/2010 Long sleeve blouse

By: burda style magazine

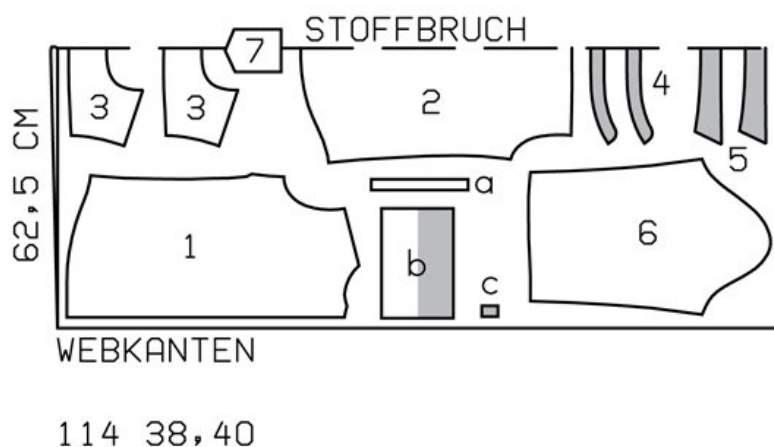
<http://www.burdastyle.com/projects/042010-long-sleeve-blouse>

Long sleeve blouse burda style magazine patterns FAQ

Materials

crosswise stretch poplin

Step 1 — Preparation



Trace the pattern pieces from the pattern sheet.

The buttonholes on piece 1 are marked for size 38. For sizes 40 — 46, mark the top buttonhole the same distance from neck edge as for size 38. The bottom buttonhole is the same for all sizes. Space the other buttonholes evenly in between.

Seam and hem allowances:

Seams, edges and hem 1.5 cm (5/8 in), no allowance on the lengthwise edge of front self-facing.

Step 2 — Cutting out



1 front 2x

2 back, on a fold 1x

3 yoke, on a fold 2x

4 collar band, on a fold 2x

5 collar, on a fold 2x

6 sleeve 2x

7 upper left pocket 1x

a) 2 binding strips for sleeve vents, 18 cm (7 ins) long, 3 cm (1 1/4 ins) wide -(incl. allowance),

b) 2 cuffs, 24.5 — 25.5 — 26 — 27 — 27.5 cm (9 5/8 — 10 — 10 1/4 — 10 3/4 — 11 ins) long, 16 cm (6 1/2 ins) wide, finished width 8 cm (3 1/4 ins),

c) 2 back loop pieces, 3 cm (1 1/4 ins) long, 2 cm (3/4 in) wide.

Interfacing: See pattern layout. Iron interfacing onto one loop piece.

Step 3 — Bust Darts

Stitch bust darts. Press darts down.

Step 4 — Back Loop

Lay loop pieces right sides together. Round off corners at one end. Stitch along lengthwise edges and rounded end. Turn right side out. Work a buttonhole in -rounded end of loop piece. Baste loop, centred, to upper edge of back.

Step 5 — Yoke

Pin yoke pieces to upper edge of back, pinning one yoke to outside and other yoke to inside. Stitch yokes in place and press up. -Stitch outer yoke to upper edges of fronts. Press seam allowances onto yoke. Turn in inside yoke edges and baste along joining seams. Topstitch yoke close to joining seams. Baste open edges of yoke together.

Step 6 — Side Seams

Stitch side seams. Trim seam allowances to 7 mm (1/4 in) wide, neaten together and press onto back. Press hem allowance to inside, turn raw edge in, and -stitch in place.

Step 7 — Facings

Fold front self-facings to inside on fold line and press. Lay doubled facings to inside and press. Baste to neck edge and sew to hem edge. Top-stitch 2.5 cm (1 in) from front edges.

Step 8 — Collar with collar band

Stitch collar pieces right sides together on outer edges. Trim seam allowances. Turn collar right side out and press. Topstitch 7 mm (1/4 in) from edges of collar. Lay collar band -pieces right sides together, catch-ing collar in between. Stitch along front and upper edges of collar band, beginning and ending stitching in front exactly on seam line of joining edge. Turn collar band right side out. Stitch -outer collar band piece to neck edge of shirt. Press seam allowances onto collar band. Turn in inside collar band piece and baste over joining seam. Top-stitch collar band close to all edges.

Step 9 — Upper left pocket

Lay self-facing on upper edge of pocket to inside, turn in and stitch 2.4 cm and 1.7 cm (approx. 1 in and 5/8 in) from fold edge. Press allowances on side and lower edges to inside. Edgestitch pocket in place on left blouse front, at placement line. Topstitch again 7 mm (1/4 in) from edges.

Step 10 — Sleeve Vents

Cut sleeve vents as marked. Spread cut edges open to a straight line and stitch to one lengthwise edge of binding strip, as narrowly as possible. Press binding strip over joining seam into vent, fold under to a width of 7 mm (1/4 in), turn in and sew to joining seam. Mitre binding on inside at top of sleeve vent. Lay binding to inside at front edge of vent and baste to lower edge.

Step 11 — Sleeves

Stitch sleeve seams. Fold pleats in lower edges of sleeves and baste.

Step 12 — Cuffs

Stitch outer halves of cuffs to lower edges of sleeves. Press seam allowances of joining seams and of other long edges of cuffs onto cuffs. Fold cuffs lengthwise, right side facing in, and stitch across ends. Turn right

side out. Baste inside edges in place. Topstitch cuffs close to joining seam and again 7 mm (1/4 in) from seam. Topstitch 7 mm (1/4 in) from remain-ing cuff edges.

Step 13 — Sleeve Caps

Set in sleeves, easing sleeve caps.

Step 14 — Buttonholes

Work buttonholes in right blouse front and right end of collar band. Work 2 buttonholes in front end of each cuff — 2.5 cm and 5.5 cm (1 in and 2 1/4 ins) below joining seam.

BurdaStyle

04/2010 Long sleeve blouse