

04/2010 Button Down Blouse

By: burda style magazine

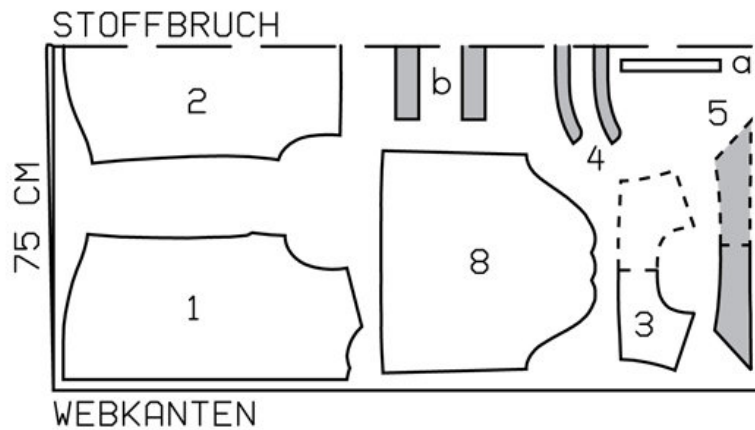
<http://www.burdastyle.com/projects/042010-button-down-blouse>

Button Down Blouse burda style magazine patterns FAQ

Materials

poplin

Step 1 — Preparation



115 38-46

Trace the pattern pieces from the pattern sheet. Follow lines and details for style 115.

The buttonholes on piece 1 are marked for size 38. For sizes 40 — 46, mark the top buttonhole the same distance from neck edge as for size 38. The bottom buttonhole is the same for all sizes. Space the other buttonholes evenly in between.

Seam and hem allowances:

Seams, edges and hem 1.5 cm (5/8 in), no allowance on the lengthwise edge of front self-facing.

Step 2 — Cutting out



1 front 2x

2 back, on a fold 1x

3 yoke, on a fold 2x

4 collar band, on a fold 2x

5 collar, on a fold 2x

8 sleeve 2x

a) 2 binding strips for sleeve vents, 18 cm (7 ins) long, 3 cm (1 1/4 ins) wide -(incl. allowances),

b) 2 cuffs, 26.5 — 27.5 — 28.5 — 29 — 30 cm (10 1/2 — 11 — 11 1/4 — 11 1/2 — 12 ins) long, 5 cm (2 ins) wide, finished width 2.5 cm (1 in).

Interfacing: See pattern layout.

Step 3 — Bust Darts

Stitch bust darts. Press darts down.

Step 4 — Yoke

Pin yoke pieces to upper edge of back, pinning one yoke to outside and other yoke to inside. Stitch yokes in place and press up. -Stitch outer yoke to upper edges of fronts. Press seam allowances onto yoke. Turn in inside yoke edges and baste along joining seams. Topstitch yoke close to joining seams. Baste open edges of yoke together.

Step 5 — Stitch side seams

Trim seam allowances to 7 mm (1/4 in) wide, neaten together and press onto back. Press hem allowance to inside, turn raw edge in, and -stitch in place.

Step 6 — Facings

Fold front self-facings to inside on fold line and press. Lay doubled facings to inside and press. Baste to neck edge and sew to hem edge. Top-stitch 2.5 cm (1 in) from front edges.

Step 7 — Collar with collar band

Stitch collar pieces right sides together on outer edges. Trim seam allowances. Turn collar right side out and press. Topstitch 7 mm (1/4 in) from edges of collar. Lay collar band -pieces right sides together, catch-ing collar in between. Stitch along front and upper edges of collar band, beginning and ending stitching in front exactly on seam line of joining edge. Turn collar band right side out. Stitch -outer collar band piece to neck edge of shirt. Press seam allowances onto collar band. Turn in inside collar band piece and baste over joining seam.

Step 8 — Sleeve Vents

Cut sleeve vents as marked. Spread cut edges open to a straight line and stitch to one lengthwise edge of binding strip, as narrowly as possible. Press binding strip over joining seam into vent, fold under to a width of 7 mm (1/4 in), turn in and sew to joining -seam. Mitre binding on inside at top of sleeve vent. Lay binding to inside at front edge of vent and baste to lower edge.

Step 9 — Sleeve Seams

Stitch sleeve seams. Stitch pleats in sleeve caps, from inside, from upper edge to arrow. Lay pleats in arrow direction, press, and baste.

Step 10 — Cuffs

Stitch outer halves of cuffs to lower edges of sleeves. Press seam allowances of joining seams and of other long edges of cuffs. Fold cuffs lengthwise, right side facing in, and stitch across ends. Turn right side out. Baste inside edges in place. Top-stitch cuffs close to joining seam and again 7 mm (1/4 in) from seam. Topstitch 7 mm (1/4 in) from remaining cuff edges.

Step 11 — Sleeves

Set in sleeves, easing sleeve caps.

Step 12 — Buttonholes

Work buttonholes in right blouse front and right end of collar band. Work 1 buttonholes in front end of each cuff — 2.5 cm and 5.5 cm (1 in and 2 1/4 ins) below joining seam.

BurdaStyle

04/2010 Button Down Blouse