

# 5/2010 Tiered Mini Dress

By: burda style magazine

<http://www.burdastyle.com/projects/52010-tiered-mini-dress>

---

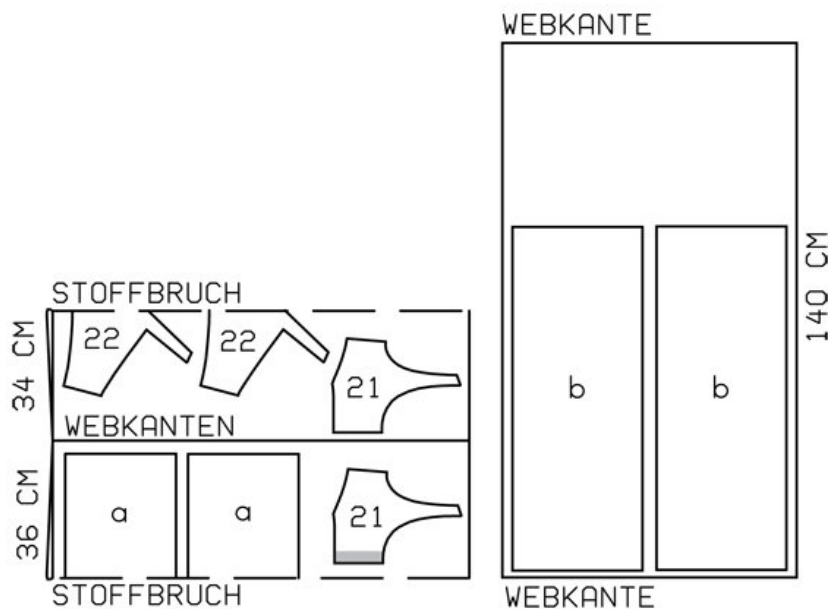
Tiered mini dress burda style magazine patterns FAQ

## Materials

Batiste

---

## Step 1 — Preparation



114 34-42

Trace the pattern pieces from the pattern sheet.

The buttonholes on piece 21 are marked for size 34. For sizes 36 — 42, mark the top buttonhole the same distance from neck edge as for size 34. The bottom buttonhole is the same for all sizes. Space the other buttonholes evenly in between.

Seam and hem allowances:

Seams and edges 1.5 cm (5/8 in).

---

## Step 2 — Cutting Out



21front 4x

22back, on a fold 2x

a) 2 upper skirt tiers. 65 cm (25<sup>3</sup>/<sub>4</sub> ins) wide, 29 cm (11<sup>1</sup>/<sub>2</sub> ins) long,

b) 2 lower skirt tiers. 90 cm (35<sup>1</sup>/<sub>2</sub> ins) wide, 34 cm (13<sup>1</sup>/<sub>2</sub> ins) long.

Interfacing: See pattern layout. Interface outer pieces.

---

## Step 3 — Darts

Stitch front darts. Trim dart allowances to a width of 1 cm (3/8 in) and press open, pressing points of darts flat.

---

## Step 4 — Front fastening edges, neck and armhole edges, and shoulder seams:

Press allowances on shoulder seam edges of two opposite fronts and one back (inside pieces) to wrong side of fabric. Pin inside front and back -pieces right sides together with respective outer pieces. Stitch along front edges, neck edges, and armholes. Trim seam allowances. Clip -curves and clip into corners. Turn fronts and back right sideout. Press seamed edges. Stitch shoulder seams of outer pieces, not catching inside pieces. Press seam allowances open. Slip allowances under inside pieces. Sew shoulder edges of inside pieces together by hand.

---

## **Step 5 — Right and left side seams**

Stitch right side seam on outer and inner pieces as continuous seam. Baste left side seam edges and lower front and back edges together without turning in.

---

## **Step 6 — Buttonholes**

Work buttonholes in right front. Lay right front on left front, matching centre fronts. Baste lower edges together.

---

## **Step 7 — Upper skirt tier**

Stitch right side seam of upper skirt tier. Press seam allowances open. At left side edges, measure and mark 25 cm (10 ins) downward, for zip. Gather upper edge of upper skirt tier and stitch to lower edge of front and back pieces. Press seam allowances up.

---

## **Step 8 — Zipper**

Sew invisible zip to left side edges as far as marking. Stitch left seam from lower edge to zip. Turn in top ends of zip tapes and sew in place.

---

## **Step 9 — Lower skirt tier**

Stitch both side seams of lower skirt tier. Trim allowance on lower edge to 7 mm (1/4 in) wide and neaten. Press allowances to inside and baste. Gather lower edge of skirt tier and stitch to upper skirt tier.

---

**BurdaStyle**

5/2010 Tiered Mini Dress