

5/2010 Sleeveless dress with drawstring detail

By: burda style magazine

<http://www.burdastyle.com/projects/52010-sleeveless-dress-with-d>

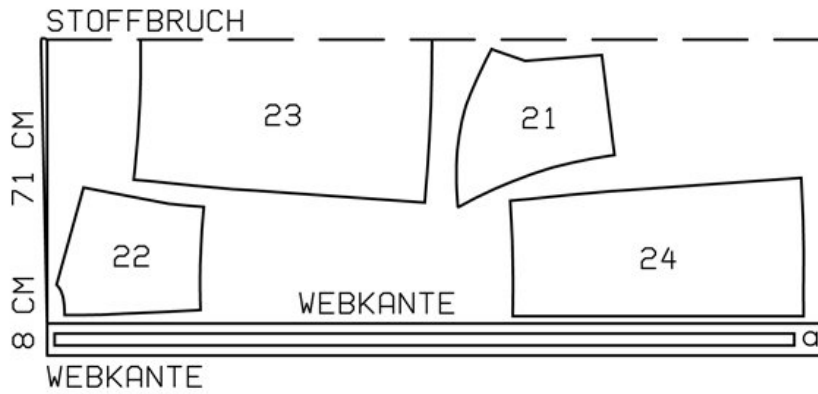


Sleeveless dress with drawstring detail burda style magazine patterns FAQ

Materials

Fine stretch jersey

Step 1 — Preparation



142 44

Trace the pattern pieces from the pattern sheet.

Seam and hem allowances:

Seams and edges 1.5 cm (5/8 in), lower front and back edge 2 cm (3/4 in), upper edge of skirt panels 2 cm (3/4 in), hem 4 cm (15/8 ins).

Step 2 — Cutting Out



21 front 2x

22 back 2x

23 front skirt panel, on a fold 1x

24 back skirt panel 2x

a) drawstring band, a total of 185 — 190 — 195 — 200 — 210 cm (72³/₄ — 75 — 76³/₄ — 78³/₄ — 82³/₄ ins) long, 3 cm (1¹/₄ ins) wide (incl. allowance).

Vilene Bias Tape: Iron onto front shoulder seam edges, back zip opening edges and neck edges.

Step 3 — Note

Use a special stretch stitch for seams on stretch fabrics or stitch with closely spaced zigzag stitching.

Step 4 — Shoulder and Side Seams of Bodice

Stitch shoulder seams of bodice. Trim seam allowances, neaten together, and press onto back. Stitch side seams from seam number 2. Press seam allowances open.

Step 5 — Allowance on neck and armhole edges

Press allowance on neck and armhole edges to inside. Work from right side to stitch 7 mm (1/4 in) from these edge, with the twin machine needle.

Step 6 — Gathering lower edge of bodice

Gather lower edge of bodice, between asterisks, to a width of 11 — 12 — 13 — 14 — 15 cm (4³/₈ — 4³/₄ — 5¹/₄ — 5¹/₂ — 6 ins) in front and to 10 cm (4 ins) in back. Lay right front on left front, matching centres. Baste lower edges together.

Step 7 — Side seams of skirt panels

Stitch side seams of skirt panels, leaving openings for drawstring. Press seam allowances open and press allowances on opening edges to inside.

Step 8 — Gathering upper edge of skirt panels

Gather upper edge of skirt panels between asterisks to 13 cm (5¹/₄ ins) in front and to 10 cm (4 ins) in back.

Step 9 — Stitching skirt to bodice

Stitch skirt to bodice. Press seam allowances down. Topstitch skirt along joining seam as marked.

Step 10 — Zipper

Sew invisible zip to back opening edges. Turn in top ends of zip tapes and sew in place. Stitch centre back seam from lower edge to zip.

Step 11 — Hem

Press hem to inside. Sew in place by hand.

Step 12 — Drawstring band

Turn in ends of drawstring band. Fold drawstring lengthwise, right side facing in. Stitch 7 mm (1/4 in) from fold edge. Turn drawstring right side out and press. Pull drawstring -into casing on front skirt panel..

BurdaStyle

5/2010 Sleeveless dress with drawstring detail