

6/2010 Chiffon Kimono Dress

By: burda style magazine

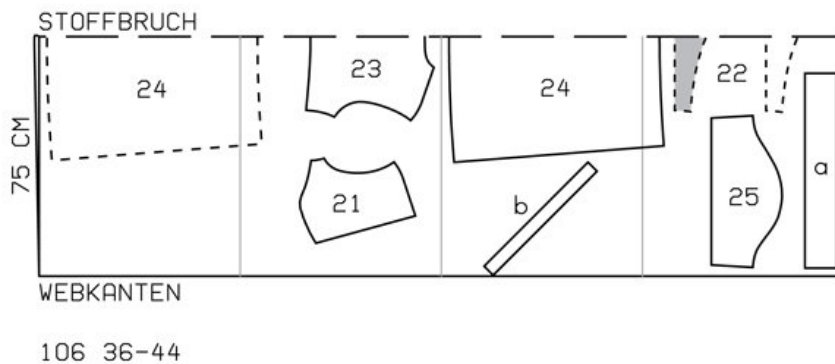
<http://www.burdastyle.com/projects/62010-chiffon-kimono-dress>

Chiffon Kimono Dress burda style magazine patterns FAQ

Materials

Crpe chiffon with a pattern repeat of about 63 cm (25 ins)

Step 1 — Preparation



Trace the pattern pieces from the pattern sheet.

Seam and hem allowances:

Seams, edges and hem 1.5 cm (5/8 in).

Step 2 — Cutting Out



21 front 2x

22 front waistband, on a fold 2x

23 back, on a fold 1x

24 skirt panel, on a fold 2x

25 sleeve 2x

a) 2 tie bands, 60 cm (24 ins) long, 10 cm (4 ins) wide, finished width 5 cm (2 ins),

b) bias strip for neck edge, a total of 82 — 84 — 87 — 89 — 92 cm (32 1/4 — 33 — 34 1/4 — 35 — 36 1/4 ins) long, 4 cm (1 5/8 ins) wide (incl. allowance).

Interfacing: See pattern layout. Interface outer front waistband piece. Also iron strips of interfacing, about 1.5 cm (5/8 in) wide, to shoulder seam edges of fronts, edges of armholes and zip opening so that they lie 3 mm (1/8 in) wide on garment piece.

Step 3 — Bust Darts and Shoulder Seams

Stitch bust darts and press toward centre. Stitch shoulder seams. Trim seam allowances to 7 mm (1/4 in) wide, neaten together, and press onto back.

Step 4 — Bias strips

Fold bias strip for neck edge lengthwise and press, right side facing out. Pin doubled bias strip to neck edge so that fold edge of strip lies on garment piece, 1 cm (3/8 in) past seam line. Stitch along neck edge. Trim seam allowances. Turn bias strip to inside. Topstitch 5 mm (3/16 in) from neck edge.

Step 5 — Waistband

Baste fronts right sides together with upper edge of outer front waistband piece, neck edges of front pieces meet at centre front. Lay front waistband pieces right sides together. Stitch along upper edge of waistband. Trim allowances. Lay waistband pieces wrong sides together and lay fronts up. Baste side and lower edges of waistband together.

Step 6 — Sleeves

Stitch sleeves to edges of armholes. Trim seam allowances, neaten together, and press onto sleeves.

Step 7 — Tie bands

Fold tie bands lengthwise, right side facing in. Stitch along long edge and across one end of each. Trim seam allowances. Turn tie bands right side out and press. Baste tie bands right sides together with side seam edges of front waistband piece.

Step 8 — Right side seam

Stitch right side seam on dress bodice and sleeve seam as continuous seam.

Step 9 — Stitching skirt to bodice

Stitch right side seam on skirt. Gather upper edge of skirt to fit edge of dress bodice. Stitch skirt to dress bodice. Press seam allowances up.

Step 10 — Zipper

Sew invisible zip to left opening edges. Leave top ends of zip tapes unattached. Teeth of zip begin at slit mark. Stitch left side seam from lower edge to zip. Stitch left sleeve seam and side seam up to zip as continuous seam.

Step 11 — Hem

Press hem and sleeve hem allowances to inside, turn in, and stitch in place.

Step 12 — Hem

Press hem and sleeve hem allowances to inside, turn in, and stitch in place.

BurdaStyle

6/2010 Chiffon Kimono Dress