

# 07/2010 Shirt Jacket

By: burda style magazine

<http://www.burdastyle.com/projects/072010-shirt-jacket>

---



Shirt Jacket burda style magazine patterns FAQ

## Materials

linen

---

## Step 1 — Preparation

Trace the pattern pieces from the pattern sheet.

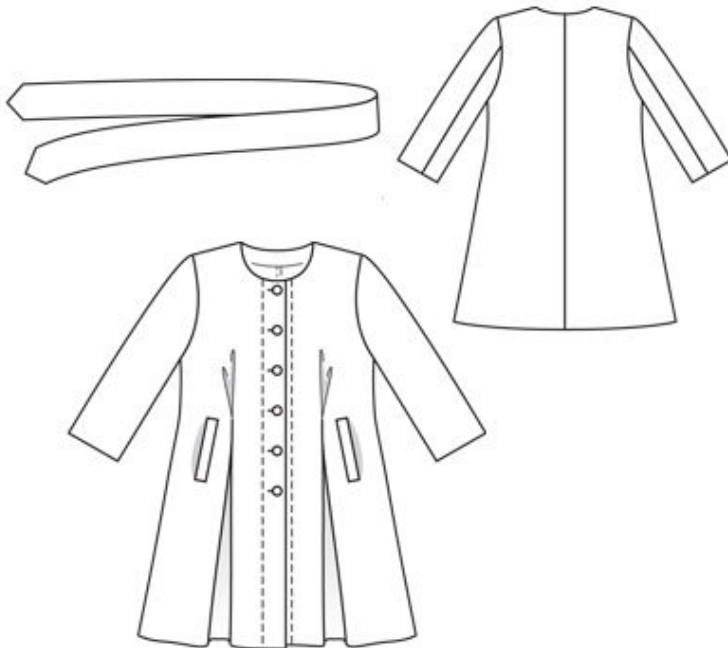
The buttonholes on piece 1 are marked for size 44. For sizes 46 — 52, mark the top buttonhole the same distance from neck edge as for size 44. The bottom buttonhole is the same for all sizes. Space the other buttonholes evenly in between. The pleat arrows on piece 1 are marked for size 44. Mark the pleat arrows for the other sizes according to the size lines.

Seam and hem allowances:

Seams and edges 1.5 cm (5/8 in), hem and sleeve hems 4 cm (1 5/8 ins).

---

## Step 2 — Cutting out



- 1 front 2x
- 2 back 2x
- 3 upper sleeve 2x
- 4 undersleeve 2x
- 5 back facing, on a fold 1x
- 6 pocket piece 4x
- â— (twice just to lining line)
- a) 2 welts, 14.5 cm (5<sup>3</sup>/<sub>4</sub> ins) long, 5 cm (2 ins) wide, finished width 2.5 cm (1 in),
- b) tie belt, 180 â— 184 â— 190 â— 196 â— 202 cm (71 â— 73 â— 75 â— 77 â— 80 ins) long, 16 cm (6<sup>1</sup>/<sub>2</sub> ins) wide, finished width 8 cm (3<sup>1</sup>/<sub>4</sub> ins).

Interfacing: See pattern layout. Also iron strips of interfacing, about 4 cm (1<sup>5</sup>/<sub>8</sub> ins) wide, to wrong side of fabric, over pocket markings.

---

## Step 3 — Pleats

Fold inverted pleat in each front piece, along centre pleat line, with right side of fabric facing in. Stitch outer pleat lines together. Lay pleats in arrow direction. Press pleat seams.

---

## Step 4 — Welt pockets

Sew welt pockets on fronts: Fold welts lengthwise with right side facing in, and stitch across ends. Turn welts right side out. Topstitch welts close to edges. Stitch welts right sides together with fronts, along marked joining lines — welts point forward. Lay larger pocket pieces on fronts, opposite welts, and stitch 1.5 cm (5/8 in) from welt joining seam. These seams should be about 5 mm (3/16 in) shorter than the welt joining seams at each end. Slash between lines of stitching and clip diagonally toward ends of seams. Do not cut into pocket pieces. Pull pocket pieces to inside. Press welts over pocket opening. Work from inside to stitch smaller pocket pieces to seam allowances of welt joining seams. Fold small triangles at pocket opening ends to inside and stitch to pocket pieces.

---

## Step 5 — Center and back seams

Stitch centre back seam, side seams and shoulder seams. Neaten seam allowances together and press to one side.

---

## Step 6 — Facings

Unfold front self-facings and stitch to back facing. Stitch facing to neck edge. Trim seam allowances, trimming corners diagonally. Lay facing at neck edge up and stitch to seam allowances, as far as possible, close to seam. Turn facings to inside. Press edges.

---

## Step 7 — Sleeve seams

Stitch sleeve seams. Press sleeve hem allowances to inside and sew in place by hand.

---

## Step 8 — Sleeve caps

Set in sleeves, easing sleeve caps.

---

## Step 9 — Hem

Unfold facings at hem. Press hem allowance to inside and sew in place by hand. Lay facings to inside again. Sew facings to hem allowance and to shoulder seams. Topstitch 6 cm (23/8 ins) from front edges of jacket.

---

## Step 10 — Buttonholes

Work buttonholes in right front.

---

## Step 11 — Belt

Fold tie belt lengthwise with right side facing in. Trim ends to points. Stitch edges together, leaving a section of seam open for turning. Turn belt right side out. Sew opening closed. Top stitch belt close to all edges. Pass tie belt behind pleat seams of jacket, from top to bottom.

---

07/2010 Shirt Jacket