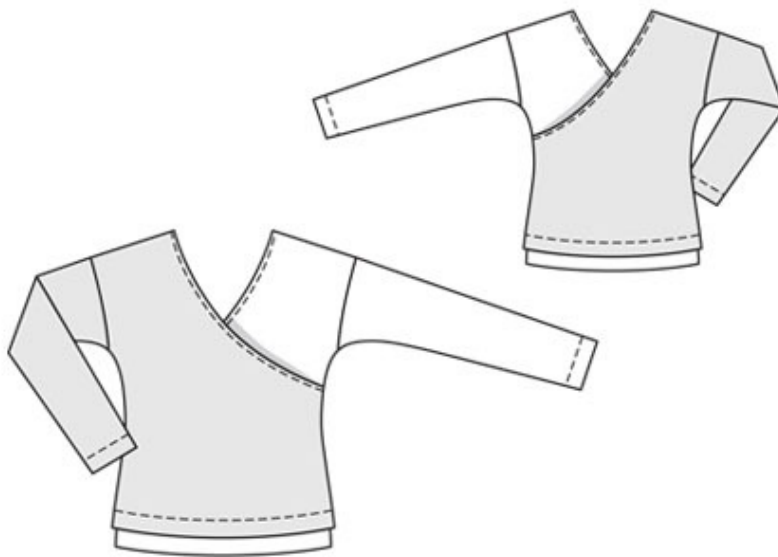


07/2010 Two Color Wrap Top

By: burda style magazine

<http://www.burdastyle.com/projects/072010-two-color-wrap-top>



Two Color Wrap Top burda style magazine patterns FAQ

Materials

fine jersey

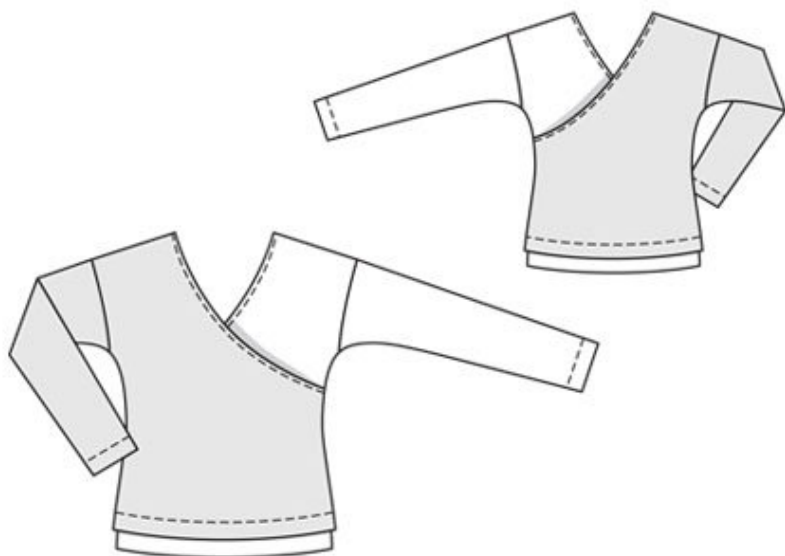
Step 1 — Preparation

Trace pattern pieces from the pattern sheet. Trace pieces 21 and 22 each twice from the pattern sheet — once for the shorter dark top and once for the longer light top.

Seam and hem allowances:

Seams and edges 1.5 cm (5/8 in), hem and sleeve hems 4.5 cm (17/8 ins). Flare sleeve hem allowances.

Step 2 — Cutting out



Dark fabric:

21front 1x

22back 1x

23sleeve 1x

Light fabric

21front 1x

22back 1x

23sleeve 1x

To cut the light-coloured pieces as mirror images of the dark-coloured pieces, place the paper pattern pieces on the fabric with their printed side facing down.

Vilene Bias Tape: Iron onto neck edges.

Step 3 — Shoulders

Stitch right shoulder seam and left side seam on dark-coloured front and back pieces. Stitch left shoulder seam and right side seam on light coloured front and back pieces. Trim seam allowances to 7 mm (1/4 in) wide, neaten together, and press onto back.

Step 4 — Neck edges

Press allowance neck edges to inside, turn in, and stitch in place.

Step 5 — Sleeves

Stitch sleeves to respective front and back pieces, matching seam numbers 2 and 3. Press seam allowances toward sleeves. Stitch side seams and sleeve seams as continuous seams.

Step 6 — Hem

Lay hem allowances on shirts and sleeves to inside. Work from right side of garment to stitch hems with the twin needle, 3.5 cm (1 1/2 ins) from fold edges.

Step 7 — Put two pieces together

Place the dark coloured top over the light coloured top, with wrong side facing right side. Pin shorter side seam to longer side seam below each marking (at the right on the inside and at the left on the outside). Stitch seam allowance of dark coloured top to light coloured top, below markings, close to seam, about 10 cm (4 ins) long

BurdaStyle

07/2010 Two Color Wrap Top