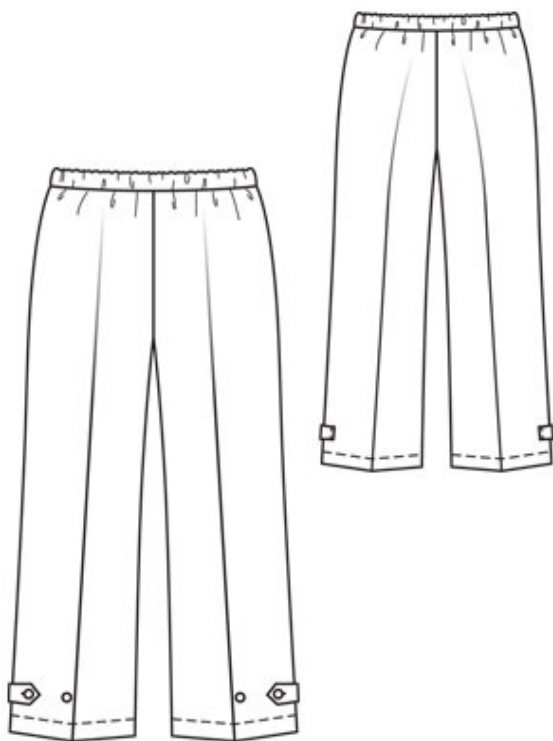


07/2010 Pants with elastic waistband

By: burda style magazine

<http://www.burdastyle.com/projects/072010-pants-with-elastic-wais>



Pants with elastic waistband burda style magazine patterns FAQ

Materials

linen

Step 1 — Preparation

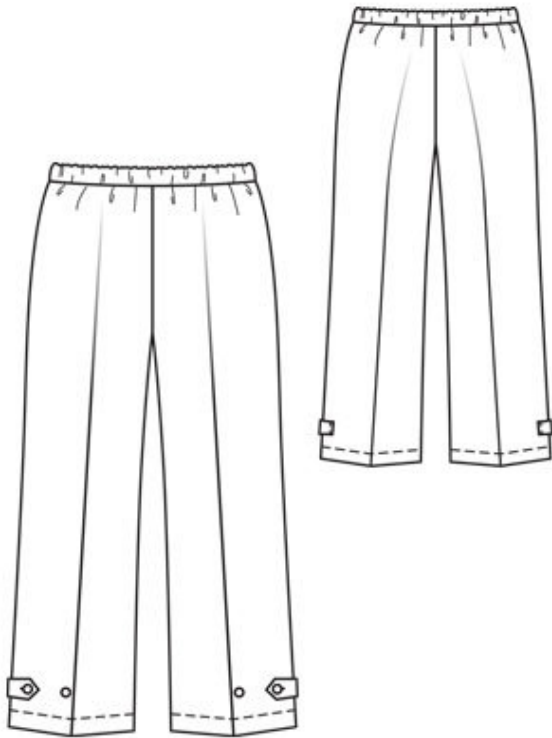
Trace pattern pieces from the pattern sheet. Lengthen pieces 21 and 22 as indicated.

The joining line for the tab on piece 22 is marked for size 44. For all other sizes, move the marking the same distance from the size lines.

Seam and hem allowances:

Seams and edges 1.5 cm (5/8 in), hem 3.5 cm (1 1/2 ins).

Step 2 — Interfacing



21 front trouser piece 2x

22 back trouser piece 2x

23 tab 4x

a) waistband, 109 — 113 — 119 — 125 — 131 cm (43 — 44 1/2 — 47 — 49 1/4 — 51 1/2 ins) long, 6 cm (2 1/2 ins) wide, finished width 3 cm (1 1/4 ins).

Interfacing: See pattern layout.

Step 3 — Front

Fold front trouser pieces lengthwise, wrong side facing in. Press creases.

Step 4 — Side seams

Stitch side seams and inside leg seams. Trim seam allowances, neaten together, and press onto back. Pull one trouser leg into the other, with right sides facing. Stitch front and back centre seam as continuous seam. Press seam allowances open from upper edges to beginnings of curve. Do not press allowances flat along curve.

Step 5 — Waistband

Pin ends of waistband right sides together. Stitch seam on outer half of waistband, leaving inside half open to insert elastic. Press seam allowances open. Stitch waistband to upper edge of trousers, matching seam of waistband to left side seam. Press allowances of joining seam onto waistband. Fold waistband half to inside. Turn inside edge of waistband under and baste in place. Topstitch waistband close to joining seam. Pull elastic in waistband. Stitch ends of elastic together to make a circumference of 84 — 88 — 94 — 100 — 106 cm (33 — 34³/₄ — 37 — 39¹/₂ — 41³/₄ ins).

Step 6 — Hem allowance

Press hem allowances to inside, turn in to 2.5 cm (1 in) wide, and stitch. Press creases in back trouser pieces. Re-press creases in front, at the hem.

Step 7 — Tabs and buttons

Stitch each interfaced tab piece to tab piece with no interfacing, right sides together, leaving straight edge open. Turn tabs right side out. Topstitch tabs close to edges. Work buttonhole in each tab. Stitch straight ends of tabs to back trouser pieces so that tabs point toward inside leg seams. Lay tabs over joining seam onto trouser fronts and stitch again, 7 mm (1/4 in) from attachment edges. Sew one button each on front trousers to match buttonhole, catching a doubled piece of fabric on the inside for reinforcement. Sew a second button in place, 8 cm (3¹/₄ ins) from each first button.

BurdaStyle

07/2010 Pants with elastic waistband