

11/2010 Plaid jacket

By: burda style magazine

<http://www.burdastyle.com/projects/112010-plaid-jacket>



Plaid jacket burda style magazine patterns FAQ

Materials

plaid loden cloth with plaid repeat of about 25 cm

Step 1 — Preparation

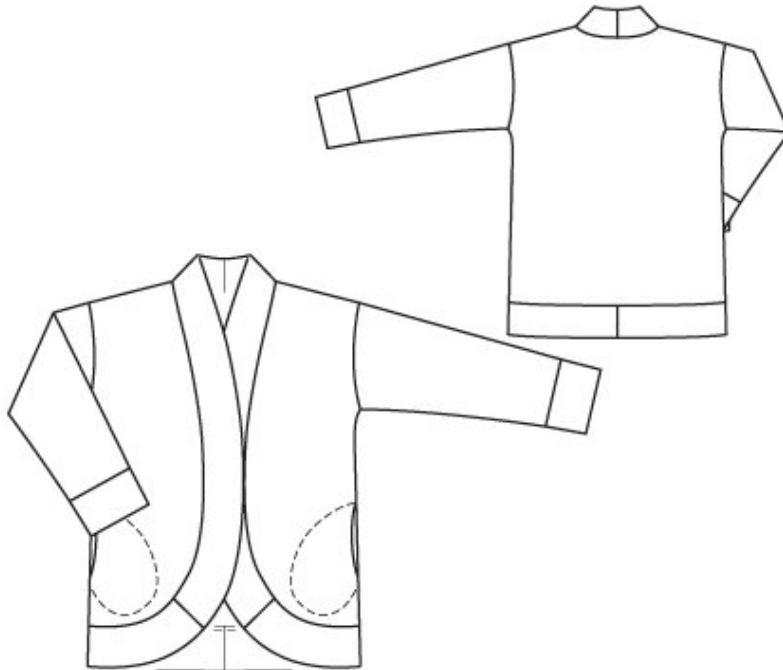
Größen, Tailles, Sizes						2		3		4		
1	N		L		K		Oberweite Tour de poitrine Bust		Tailleweite Tour des taille Waist		Hüftweite Tour des hanches Hip	
	5'6" 168 cm		5'9" 176 cm		5'3" 160 cm		ins	cm	ins	cm	ins	cm
	US	Eur.	US	Eur.	US	Eur.						
	6	32	6	64	6	16	30	76	23	58	32 ½	82
	8	34	8	68	8	17	31 ½	80	24 ½	62	34	86
	10	36	10	72	10	18	33	84	26	66	35 ½	90
	12	38	12	76	12	19	34 ½	88	27 ½	70	37	94
	14	40	14	80	14	20	36 ½	92	29 ½	74	38 ½	98
	16	42	16	84	16	21	37 ½	96	30 ½	78	40 ½	102
	18	44	18	88	18	22	39 ½	100	32 ½	82	41 ½	106
	20	46	20	92	20	23	41	104	34	86	43 ½	110
	22	48	22	96	22	24	43 ½	110	36 ½	92	45 ½	116
	24	50	24	100	24	25	45 ½	116	38 ½	98	48	122
	26	52	26	104	26	26	48	122	41	104	50 ½	128
	28	54	28	108	28	27	50 ½	128	43 ½	110	52 ½	134
	30	56	30	112	30	28	52 ½	134	45 ½	116	55 ½	140
	32	58	32	116	32	29	55 ½	140	48	122	57 ½	146
	34	60	34	120	34	30	57 ½	146	50 ½	128	60	152

Trace the pattern pieces from the pattern sheet. Follow lines and details for view B. Trace pocket piece from piece 1 as a separate pattern piece— it is the same for all sizes.

Seam and hem allowances:

Seams and edges 1.5 cm (5/8 in).

Step 2 — Cutting out



- 1 front 2x
- 2 pocket piece 2x
- 3 back, on a fold 1x
- 4 front band with collar 4x
- 5 back hem band
- 6 for view A, on a fold 2x
- 7 for view B, with seam 4x
- 8 sleeve 2x
- 9 sleeve band, on a fold 2x
- Lining: pocket piece.

Step 3 — Shoulder seams

Stitch shoulder seams. Stitch sleeves to front and back pieces (seam numbers 2 and 3). Press seam allowances of sleeve joining seams onto fronts and back. Stitch fronts and back 5 mm (3/16 in) from joining seams. Stitch side seams and sleeve seams as continuous seams — do not stitch across pocket openings in side seams.

Step 4 — In-seam pockets

Pin pocket pieces right sides together with seam allowances of pocket opening edges — pocket lining pieces in front, pocket pieces of main fabric in back. Stitch pocket pieces in place close to side seam and along line of seam on pocket opening edges. Press seams open, pressing pocket pieces apart. Topstitch 7 mm

(1/4 in) from front pocket opening edges and stitch horizontally at ends of pocket openings. Press pocket pieces forward and baste to wrong side of front. To stitch pocket pieces in place, pin paper pattern piece to front and topstitch along edges of pattern piece. Topstitch 5 mm (3/16 in) from pocket opening edges.

Step 5 — Darts

Stitch darts in outer and inner front band pieces. Centre allowance of each dart over seam and press from wide end to point. Stitch outer and inner back hem bands to respective front bands (side seams). Stitch centre back seam of integrated collar pieces. Press seam allowances open. Lay inner and outer band pieces right sides facing, laying collar pieces together. Stitch along outer edge. Turn band and collar right side out. Stitch open edges of band and collar together to edges of jacket (seam numbers 6 and 8). Lay seam allowances of joining seam onto jacket. Lay band forward and down and lay collar up. Press. Stitch fronts and back 5 mm (3/16 in) from joining seam.

Step 6 — Sleeve bands

Stitch ends of each sleeve band together. Fold sleeve bands on marked fold line, wrong side facing in, and press. Stitch edges of sleeve bands together to lower edges of sleeves. Press seam allowances up. Stitch sleeves close to joining seams. Fold sleeve bands on fold line and press. Insert top halves of snap fasteners as marked. Fold fold edge to abutting line.

Step 7 — Centre seam

Stitch centre seam on back hem band. Due to the heavier original fabric, the band with integrated collar and the sleeve bands are not attached as a double layer. Attach each of these pieces as single layers.

Step 8 — Attach band with integrated collar

Stitch darts and seams on bands and integrated collar. Stitch outer band with collar to jacket. Press allowances of joining seam open. Stitch inner and outer band with collar together along outer edges, right sides facing. Turn band and collar right side out. Lay inside edge of inner band and collar flat over joining seam without turning in. Stitch from right side of garment, along line of seam, thereby catching inner edge.

Step 9 — Sleeve bands

Stitch ends of each sleeve band together. Stitch outer half of sleeve bands to lower edges of sleeves. Press seam allowances of joining seams open. Fold sleeve bands on fabric fold line, wrong side facing in, and press. Lay inside edges flat over joining seams without turning in. Stitch from right side of garment, along line of seam, thereby catching inner edge.

BurdaStyle

11/2010 Plaid jacket