

## 02/2011 Top with kangaroo pockets

By: burda style magazine

<http://www.burdastyle.com/projects/022011-top-with-kangaroo-poc>

---



Top with kangaroo pockets burda style magazine patterns FAQ

### Materials

batiste

---

## Step 1 — Preparation

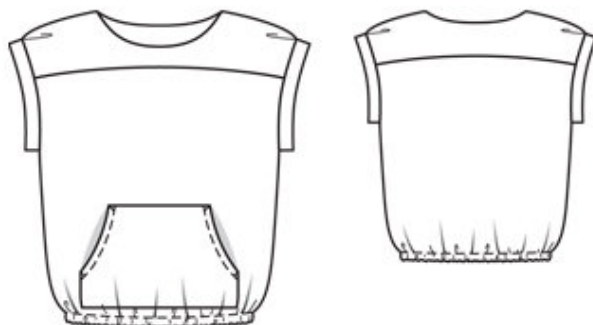
Größen, Tailles, Sizes						2		3		4		
1	N		L		K		Oberweite Tour de poitrine Bust		Tailleweite Tour des taille Waist		Hüftweite Tour des hanches Hip	
	5'6" 168 cm		5'9" 176 cm		5'3" 160 cm		ins	cm	ins	cm	ins	cm
	US	Eur.	US	Eur.	US	Eur.						
	6	32	6	64	6	16	30	76	23	58	32 ½	82
	8	34	8	68	8	17	31 ½	80	24 ½	62	34	86
	10	36	10	72	10	18	33	84	26	66	35 ½	90
	12	38	12	76	12	19	34 ¾	88	27 ¾	70	37	94
	14	40	14	80	14	20	36 ¾	92	29 ¾	74	38 ¾	98
	16	42	16	84	16	21	37 ¾	96	30 ¾	78	40 ¾	102
	18	44	18	88	18	22	39 ½	100	32 ½	82	41 ¾	106
	20	46	20	92	20	23	41	104	34	86	43 ½	110
	22	48	22	96	22	24	43 ½	110	36 ¾	92	45 ¾	116
	24	50	24	100	24	25	45 ¾	116	38 ¾	98	48	122
	26	52	26	104	26	26	48	122	41	104	50 ½	128
	28	54	28	108	28	27	50 ½	128	43 ½	110	52 ¾	134
	30	56	30	112	30	28	52 ¾	134	45 ¾	116	55 ¾	140
	32	58	32	116	32	29	55 ¾	140	48	122	57 ½	146
	34	60	34	120	34	30	57 ½	146	50 ½	128	60	152

Trace the pattern pieces from the pattern sheet. Follow lines and details for style 114. Trace the pocket from piece 21 as a separate pattern piece.

Seam and hem allowances:

Seams and edges 1.5 cm (5/8 in), hem 2.5 cm (1 in), pocket opening edge 2 cm (3/4 in).

## Step 2 — Cutting out



21 front, on a fold 1x

22 pocket, on a fold 1x

23 front yoke, on a fold 2x

24 back, on a fold 1x

25 back yoke, on a fold 2x

a) 2 armhole bands, cut on the bias, 41 cm (16 1/4 in) — 42 cm (16 1/2 in) — 43 cm (17 in) — 44 cm (17 1/4 in) — 45 cm (17 3/4 in) long and 5 cm (2 in) wide, finished width 2.5 cm (1 in).

### Step 3 — Patch pocket

Press allowances on pocket opening edges to inside, turn under, and baste. Topstitch close to pocket opening edges and again 1 cm (3/8 in) from edges. Press allowances on upper, lower, and side edges of pocket to inside. Edgestitch pocket in place on front. Stitch slanted thread bars, about 1 cm (3/8 in) long, at top corners of pockets.

### Step 4 — Sew yokes and attach

Stitch shoulder seams of yoke, beginning and ending exactly on marked neck edge. Press seam allowances open. Lay outer and inner yoke right sides together and stitch neck edges together. Trim seam allowances. Turn yoke right side out and press edge. Baste open yoke edges together. At armholes, fold pleats in direction of arrows and baste. Stitch yoke to front and back. Press seam allowances away from yoke.

## Step 5 — Elastic

Stitch side seams below marking at seam number 4. Leave one side seam open below hem line, for elastic casing.

---

## Step 6 — Armhole bands

Stitch narrow edges of each band together, beginning and ending exactly on marked joining lines. Press seam allowances open. Fold bands in half. Baste joining edges together and stitch to edges of armholes, beginning and ending at top end of side seam and not catching side seam allowances. Press seam allowances of band joining seams away from bands.

---

## Step 7 — Elastic casing

Press hem allowance to inside, turn in and stitch as marked to form elastic casing. Insert elastic. Sew ends of elastic together for a circumference of 80 — 84 — 88 — 92 — 96 cm (31 1/2 — 33 — 34 3/4 — 36 1/4 — 37 3/4 ins).

---

**BurdaStyle**

02/2011 Top with kangaroo pockets