

3/2011 Oversize Jersey Top

By: burda style magazine

<http://www.burdastyle.com/projects/32011-oversize-jersey-top>



Oversize Jersey Top burda style magazine patterns FAQ

Materials

Stretch Jersey

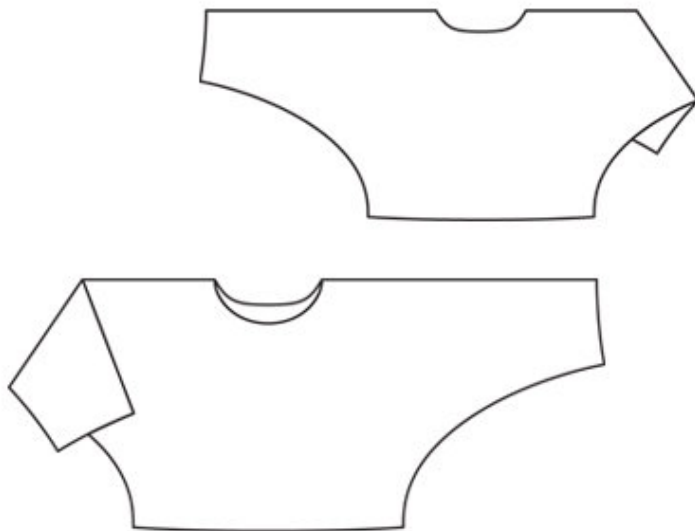
Step 1 — Preparation

Trace pattern pieces from pattern sheet.

Seam and hem allowances:

Seams and edges 1.5 cm (5/8 in), hem and sleeve hems 4 cm (15/8 ins) (flare sleeve hem allowances). No allowance on neck edge.

Step 2 — Cutting Out



21 front with integrated sleeve,

â— on a fold 1x

22 back with integrated sleeve,

â— on a fold 1x

Step 3 — Note

Stitch seams on stretch fabrics with a special stretch stitch or at a narrow zigzag setting.

Step 4 — Stitch shoulder/sleeve seams and side/lower sleeve seam

Stitch shoulder/sleeve seams and side/lower sleeve seams each as continuous seam. Neaten seam allowances together and press onto back. Sew ends of seam allowances to neck edge by hand.

Step 5 — Hem

Press hem allowances on top and sleeves to inside and sew in place by hand.

BurdaStyle

3/2011 Oversize Jersey Top