

# 07/2011 Wrap top

By: burda style magazine

<http://www.burdastyle.com/projects/072011-wrap-top>

---



Wrap top burda style magazine patterns FAQ

## Materials

Fine jersey

---

## Step 1 — Preparation

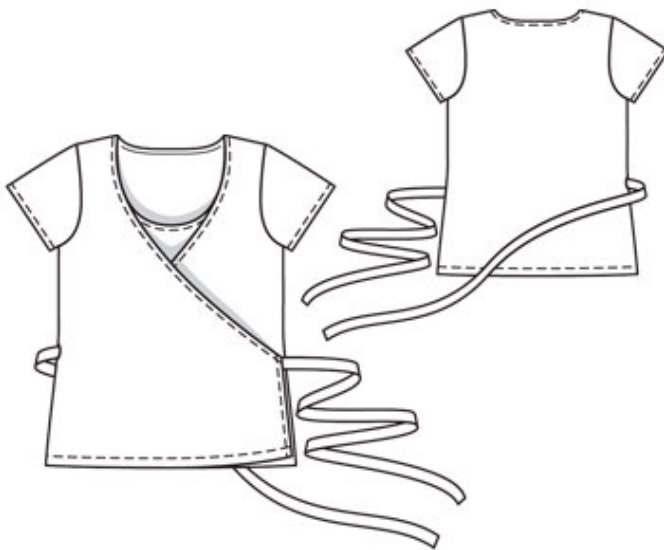
Trace the pattern pieces from the pattern sheet.

Seam and hem allowances:

Seams and edges 1.5 cm (5/8 in), front edge and neck edge of front wrap piece 2 cm (3/4 in), hem 2.5 cm (1 in), sleeve hems 1.5 cm (5/8 in).

---

## Step 2 — Cutting out



21 front wrap piece 2x

22 front, on a fold 1x

23 back, on a fold 1x

24 sleeve 2x

a) 2 tie bands, 127 â— 131 â— 135 â— 139 â— 143 cm (50 â— 51 1/2 â— 53 1/4 â— 54 3/4 â— 56 1/2 ins) long, 4 cm (15/8 ins) wide, finished width 2 cm (3/4 in).

Interfacing: See pattern layout. Iron a piece of interfacing, 5 cm (2 ins) long and 2.5 cm (1 in) wide, to wrong side of side seam edge on right front wrap piece, over marked slit for the drawstring. Iron Vilene Bias Tape/stay tape to wrong sides of neck and armhole edges and of front shoulder edges. Also iron Vilene Bias Tape/stay tape to wrong sides of slanted neck edges of front wrap pieces.

---

### **Step 3 — Note**

Stitch seams on stretch fabrics with a special stretch stitch or at a narrow zigzag setting. Stitch hems with a twin sewing machine needle to keep the edges elastic.

---

### **Step 4 — Tie band**

Fold tie bands lengthwise, right side facing in. Stitch each along open long edges and across one end. Trim seam allowances. Turn tie bands right side out and press.

---

### **Step 5 — Front wrap pieces**

Press allowance on neck edge to inside, turn in to 1 cm (3/8 in) wide, and stitch. Press hem allowances to inside. Stitch from right side with the twin machine needle. Stitch tie bands to front edges, between markings — tie bands point toward the sides. Turn allowances on front edges to inside, turn in to a width of 1 cm (3/8 in), and stitch. Clip side seam allowance of right front wrap piece at slit marks. Between clip, turn allowance to inside, turn edge under, and stitch.

---

### **Step 6 — Side seams**

Lay front wrap pieces, on front with wrong side facing right side. Baste to side seams edges, armhole edges, and shoulder edges — the hem allowance and allowance of front neck edge extend.

---

### **Step 7 — Sides and shoulders**

Stitch side seams and shoulder seams. Neaten seam allowances together and press onto back.

---

### **Step 8 — Neck**

Press allowance on neck edge to inside and neaten. Stitch from the right side with the twin machine needle, 1 cm (3/8 in) from edge. Interrupt stitching at shoulder seams. Do not catching wrap pieces.

---

### **Step 9 — Sleeve seams**

Stitch sleeve seams. Press sleeve hem allowances to inside. Stitch from right side, 1 cm (3/8 in) from edge, using the twin needle.

---

### **Step 10 — Sleeves**

Set in sleeves.

---

### **Step 11 — Hem**

Press hem allowance to inside. Stitch from right side, 2.5 cm (1 in) from edge, using the twin needle. Interrupt stitching at side seams and do not catch wrap pieces.

---

07/2011 Wrap top