

02/2011 Dress with waist elastic band

By: burda style magazine

<http://www.burdastyle.com/projects/022011-dress-with-waist-elastic>



Dress with waist elastic band burda style magazine patterns FAQ

Materials

gabardine

Step 1 — Preparation

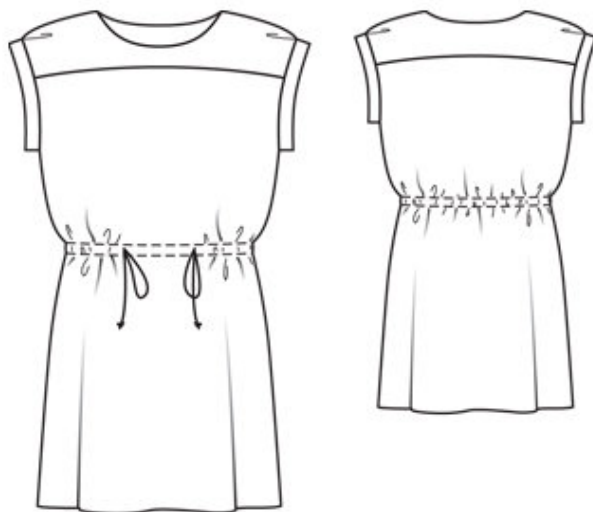
Größen, Tailles, Sizes						2		3		4		
1	N		L		K		Oberweite Tour de poitrine Bust		Tailleweite Tour des taille Waist		Hüftweite Tour des hanches Hip	
	5'6" 168 cm		5'9" 176 cm		5'3" 160 cm		ins	cm	ins	cm	ins	cm
	US	Eur.	US	Eur.	US	Eur.						
	6	32	6	64	6	16	30	76	23	58	32 ½	82
	8	34	8	68	8	17	31 ½	80	24 ½	62	34	86
	10	36	10	72	10	18	33	84	26	66	35 ½	90
	12	38	12	76	12	19	34 ¾	88	27 ¾	70	37	94
	14	40	14	80	14	20	36 ¾	92	29 ¾	74	38 ¾	98
	16	42	16	84	16	21	37 ¾	96	30 ¾	78	40 ¾	102
	18	44	18	88	18	22	39 ½	100	32 ½	82	41 ¾	106
	20	46	20	92	20	23	41	104	34	86	43 ½	110
	22	48	22	96	22	24	43 ½	110	36 ¾	92	45 ¾	116
	24	50	24	100	24	25	45 ¾	116	38 ¾	98	48	122
	26	52	26	104	26	26	48	122	41	104	50 ½	128
	28	54	28	108	28	27	50 ½	128	43 ½	110	52 ¾	134
	30	56	30	112	30	28	52 ¾	134	45 ¾	116	55 ¾	140
	32	58	32	116	32	29	55 ¾	140	48	122	57 ½	146
	34	60	34	120	34	30	57 ½	146	50 ½	128	60	152

Trace the pattern pieces from the pattern sheet. Follow lines and details for style 116. Lengthen pieces 21 and 23 as indicated.

Seam and hem allowances:

Seams and edges 1.5 cm (5/8 in), hem 4 cm (15/8 ins).

Step 2 — Cutting out



21front, on a fold 1x

22front yoke, on a fold 2x

23back, on a fold 1x

24back yoke, on a fold 2x

a) 2 armhole bands, cut the bias, 41 — 42 — 43 — 44 — 45 cm (16¼ — 16½ — 17 — 17¼ — 17¾ ins) long and 5 cm (2 ins) wide, finished width 2.5 cm (1 in),

b) facing strip for casing, 104 — 107 — 111 — 115 — 119 cm (41 — 42¼ — 43¾ — 45¼ — 47 ins) long, 4 cm (15/8 ins) wide (incl. allowance).

Step 3 — Sew yokes and attach

Stitch shoulder seams of yoke, beginning and ending exactly on marked neck edge. Press seam allowances open. Lay outer and inner yoke right sides together and stitch neck edges together. Trim seam allowances. Turn yoke right side out and press edge. Baste open yoke edges together. At armholes, fold pleats in direction of arrows and baste. Stitch yoke to front and back. Press seam allowances away from yoke.

Step 4 — Buttonhole

On front, work buttonhole openings for drawstring as marked, first ironing small pieces of interfacing to wrong fabric side, for reinforcement.

Step 5 — Side seams

Stitch side seams below marking at seam number 4.

Step 6 — Armhole bands

Stitch narrow edges of each band together, beginning and ending exactly on marked joining lines. Press seam allowances open. Fold bands in half. Baste joining edges together and stitch to edges of armholes, beginning and ending at top end of side seam and not catching side seam allowances. Press seam allowances of band joining seams away from bands.

Step 7 — Facing and elastic

Stitch ends of facing strip for casing together, 1 cm (3/8 in) from edge. Neaten lengthwise edges. Baste facing strip to inside of front and back, over marked casing lines. Stitch from right side as marked. Use a safety pin as a bodkin to pull elastic into casing, through openings. Loop ends of elastic and knot ends.

Step 8 — Hem

Press hem to inside and sew in place by hand.

BurdaStyle

02/2011 Dress with waist elastic band