

10/2011 Chiffon blouse with tie band

By: burda style magazine

<http://www.burdastyle.com/projects/102011-chiffon-blouse-with-tie>



Chiffon blouse with tie band burda style magazine patterns FAQ [Updated 1/17/2012] — Please note that the instructions for this project have been revised.

Materials

Chiffon

Step 1 — Preparation



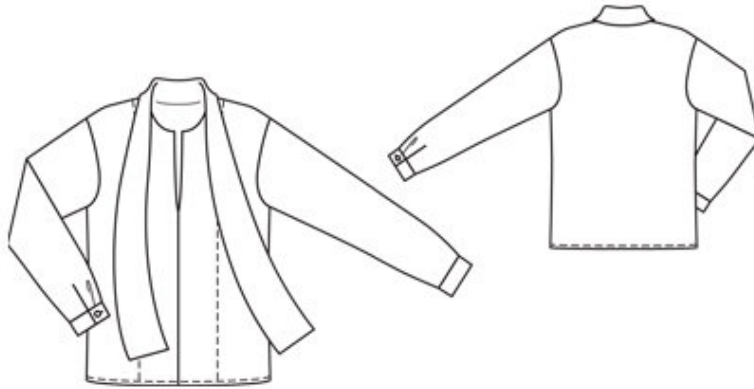
Paper cut for ANSI A (German DIN A4) prints:

This pattern is printed on 8.5 × 11 sheets of plain paper. Do not scale or center pages before printing. Wait until all sheets are printed out before beginning to tape them together. **Do not cut out pattern pieces yet**— Arrange the sheets on a large, hard, flat surface so that they fit together, matching up like numbers and letters (i.e. 6A to 6A). To tape pattern together, fold under the margin of one piece (6A) and tape right against the line of it's matching number/letter (6A).

Trace the pattern pieces from the pattern sheet following the lines and markings for the right size. This pattern runs in the sizes 36, 38, 40, 42, 44.

burda style magazine pattern do not have seam allowance included.
Seam and hem allowances to be added: Seams and edges 1.5 cm (5/8 in).

Step 2 — Cutting out



Cut the following pieces:

Main fabric:

Pattern piece 21 – Front piece, cut x2

Pattern piece 22 – Back piece, cut on fold x1

Pattern piece 23 – Sleeve piece, cut x2

Also draft and cut the following pieces. (Not on the pattern sheet) :

a) Tie collar – cut 1 piece in the following dimensions (not including seam allowance):
138 cm (54 1/2 in) long and 17 cm (6 3/4 in) wide
Finished width 8,5 cm (3 3/8 in)

b) Cuffs – cut two pieces in the following dimensions (not including seam allowance)

Size 36: 23 cm (9 1/8 in) long and 7,5 cm (3 in) wide
Size 38: 23,5 cm (9 1/4 in) long and 7,5 cm (3 in) wide
Size 40: 24 cm (9 1/2 in) long and 7,5 cm (3 in) wide
Size 42: 24,5 cm (9 3/4 in) long and 7,5 cm (3 in) wide
Size 44: 25 cm (10 in) long and 7,5 cm (3 in) wide

Finished width 3,7 cm (1 1/2 in)

c) Bias binding strips for sleeve vents – cut 2 bias pieces in the following dimensions (including seam allowance):

19 cm (7 1/2 in) x 3 cm (1 1/4 in)

Interfacing:

Cut interfacing for and iron onto wrong side of cuffs and tie collar pieces.

Step 6 — Tie collar

Fold the collar in half and mark the center back. Line one side of the tie collar to the neckline right sides facing, leaving the tie bands extending from each shoulder seam. Pin and stitch in place. Fold the collar lengthwise, right side facing in. Stitch edges of tie bands together. Trim seam allowances, trimming corners diagonally. Turn tie bands right side out. Press seam allowances of joining seam onto collar. Turn in allowance at inside edge of collar. Pin and sew inside edge in place by top-stitch from outside. t.

Step 7 — Sleeve vents and cuffs

Slash the sleeve vents as marked. Spread the cut edges open to a straight line and stitch to one long side of the binding strips, as narrowly as possible. Press the binding strip over joining seam into vent. Then fold to 7 mm (1/4 in) wide, turn edge under, and sew to the joining seam. At inside upper edge of vent, mitre the binding. At front vent edges, turn the binding to the inside and tack to lower edge.

Step 8 — Armholes

Pin and stitch the sleeves to the armholes, right sides facing each other, making sure to line up marking 2. Trim the seam allowances, neaten together and press onto sleeves.

Step 9 — Sleeve seams and side seams

Line up, pin and stitch the sleeve seams and side seams as continuous seams. Trim and neaten seam allowances together. Press to back.

Step 10 — Sleeve pleats

Fold the pleat in lower edge of each sleeve in the direction of arrow and tack in place.

Step 11 — Cuffs

Pin and stitch one long side of the cuffs, right sides together to the sleeve openings. starting and ending at the sleeve vents. Press the seam allowances into the cuffs. Fold the cuffs lengthwise, right sides facing in, and stitch across the ends by the sleeve vents. Turn right side out and press. Tack the inside edges in place. Fold the seam allowance in on the inside halves of the cuffs, press, pin in place and topstitch the cuffs close to the joining seams. Work one buttonhole in front end of each cuff. Sew on buttons..

Step 12 — Hem

Press the hem allowance to the inside, fold again and pin and stitch in place.

Step 3 — Neck

Start by neatening the edge of the self facings of the front piece. Use zig zag stitch or overlock. Turn the self-facing on front pieces to outside. Fold along the marked line with the right side facing in, line up the neckline and pin in place. Stitch to neckline. Neaten and trim seam allowance. Turn self-facings to back and press the neck edge.

Step 4 — Facings and center front seam

Lay fronts right sides together, turning facings forward again. Pin center front seam lines together and stitch from the slit marking and down.

Turn in the inside facing edges, press, and stitch in place from the right side. Fold in the hem allowance on the bottom front and also stitch this in place.

Step 5 — Shoulder seams and facing seams

Lay front pieces on the back piece right sides in and line up the shoulders. Pin them in place. Note that the allowance of back piece should extend at the neckline.

Trim the seam allowance to 7 mm (1/4 in) wide, neaten together and press onto back.

BurdaStyle

10/2011 Chiffon blouse with tie band