

# 10/2011 Button-down blouse

By: burda style magazine

<http://www.burdastyle.com/projects/102011-button-down-blouse>

---



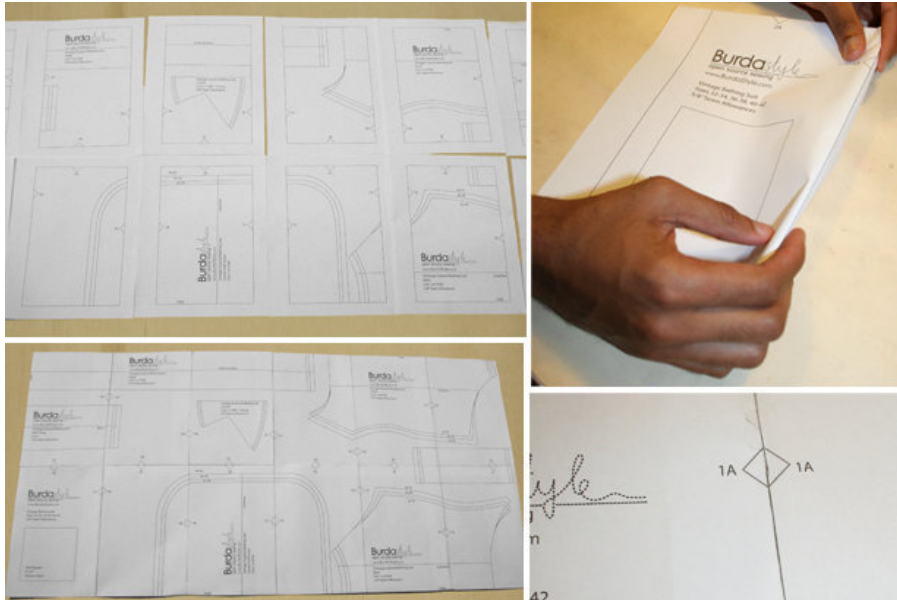
Button-down blouse burda style magazine patterns FAQ

## Materials

Crpe satin with crosswise stretch

---

## Step 1 — Preparation



Paper cut for ANSI A (German DIN A4) prints:

This pattern is printed on 8.5 × 11 sheets of plain paper. Do not scale or center pages before printing. Wait until all sheets are printed out before beginning to tape them together. **Do not cut out pattern pieces yet**— Arrange the sheets on a large, hard, flat surface so that they fit together, matching up like numbers and letters (i.e. 6A to 6A). To tape pattern together, fold under the margin of one piece (6A) and tape right against the line of it's matching number/letter (6A).

Trace the pattern pieces, following lines and markings for the right size. This pattern comes in the sizes 34, 36, 38, 40, 42.

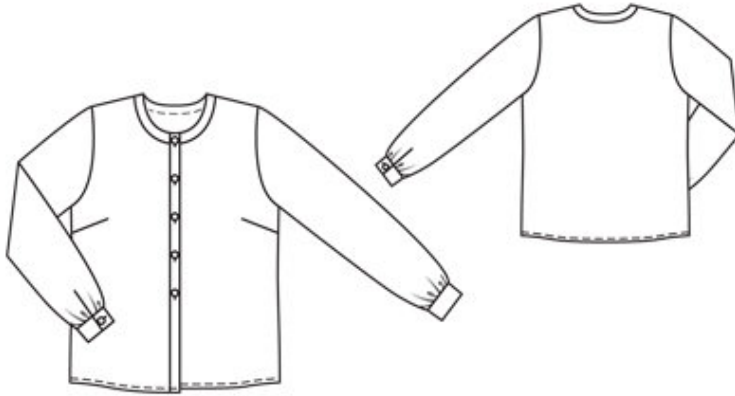
**burda style magazine pattern do not have seam allowance included.**

Seam and hem allowances to be added: Seams and edges 1.5 cm (5/8 in).

Please note that the pattern sheet for this blouse includes a piece that is not needed. It is numbered 5 on the pattern sheet. Disregard this piece.

---

## Step 2 — Cutting out



## Step 2 – Cutting out

Pattern piece 1 – Front piece, cut x2

Pattern piece 2 – Front placket, cut x2

Pattern piece 3 – Back piece, cut on fold x1

Pattern piece 4 – Sleeve, cut 2

Pattern piece 6 – Front neck band (binding), cut x2

Pattern piece 7 – Back neck band (binding), cut on fold x1

Also draft and cut the following pieces, not on the pattern sheet:

a) Two bias binding strips for sleeve vents:

19 cm (7 1/2 in) long and 3 cm (1 1/4 in) wide (including allowances)

b) two cuffs in the following dimensions (NOT including seam allowance) :

size 34: 23 cm (9 1/8 in) x 8 cm (3 1/4 in)

size 36: 23,5 cm (9 1/4 in) x 8 cm (3 1/4 in)

size 38: 24 cm (9 1/2 in) x 8 cm (3 1/4 in)

size 40: 24,5 cm (9 3/4 in) x 8 cm (3 1/4 in)

size 42: 25 cm (10 in) x 8 cm (3 1/4 in)

The finished width for cuff will be 4 cm (1 5/8 in)

Interfacing:

Cut interfacing and iron on the wrong side of piece 2, 6 and 7.

---

### **Step 3 — Bust darts, shoulder and side seams**

Stitch bust darts. Press darts down. Stitch side seams and shoulder seams. Neaten seam allowances together and press onto back. Press hem allowance to inside, turn in, and stitch in place.

---

### **Step 4 — Neck band**

Stitch shoulder seams of neck band. Pin band to inside of neck edge, with right side facing wrong side. Stitch along line of neck edge. Trim seam allowances. Turn band to outside, turn edge under, and edgestitch in place.

---

### **Step 5 — Front placket and hem**

Pin and stitch front Placket to front edges of front piece, right sides facing each other. Press seam allowances onto placket. Fold the placket on fold line, with right side facing in. Stitch the ends closed. Turn the plackets right sides out. Tack the inside edges in place. Topstitch the placket close to the joining seams on front. Fold the hem allowance (1,5 cm), fold again and press. Topstitch in place.

---

### **Step 6 — Sleeve vents and cuffs**

Slash the sleeve vents as marked. Spread the cut edges open to a straight line and stitch the binding strip, right sides facing in, as narrowly as possible. Press the binding strip over joining seam into vent. Then fold to 7 mm (1/4 in) wide. Turn edge under, and sew to the joining seam. At the inside upper level of vent, mitre the binding. At front vent edges, turn the binding to the inside and tack to the lower edge.

Fold the sleeve with the right side facing in, line up the sleeve seam (seam number 4), pin and stitch together. Neaten the seam allowance together by zigzag or overlock, press back.

Gather the lower sleeve edges (opening) to fit the cuff. Pin one long sides of the cuffs to the lower sleeve openings, right sides facing in, stitch together and press the allowances towards the cuffs. Fold the cuffs lengthwise, right sides facing in, and stitch across ends. Turn right sides out, press and tack the inside edges in place. Fold in the seam allowances on the inside, still open edges of cuffs, press and topstitch the cuffs close to the joining seams. Work one buttonhole in front of end of each cuff.

---

### **Step 7 — Sleeve caps**

Turn the garment inside out and set in sleeves in each armhole, right sides facing each other, easing sleeve caps. Pin down and stitch around the armhole opening. Turn garment back to the right side and press the armhole seam, pressing the allowance out into the sleeve.

---

### **Step 8 — Buttonholes**

Work buttonholes, evenly spread out on the right placket. Sew in buttons on the left placket.

---

**BurdaStyle**

10/2011 Button-down blouse