

10/2011 Sleeveless sweater dress

By: burda style magazine

<http://www.burdastyle.com/projects/102011-sleeveless-sweater-dre>

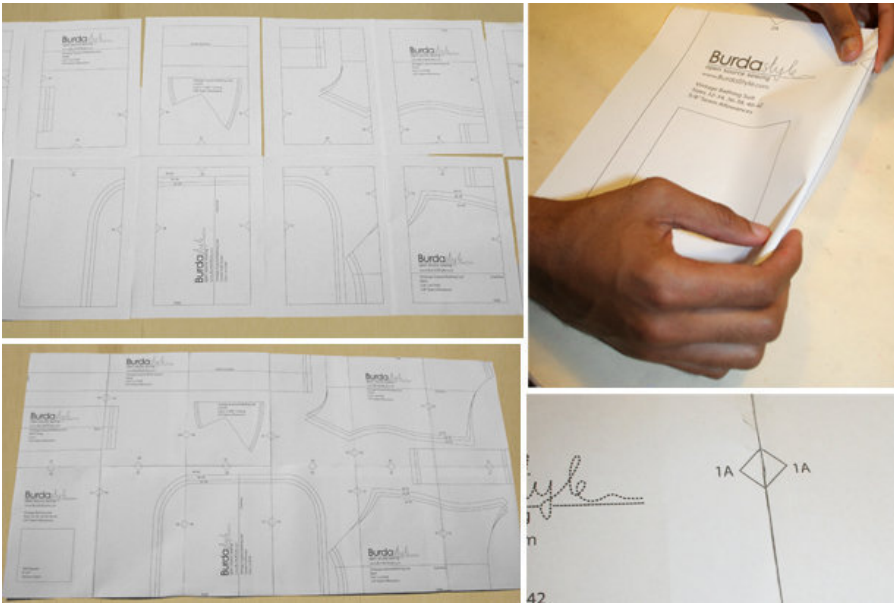


Sleeveless Dress burda style magazine patterns FAQ

Materials

Bulky-look knit fabric, with horizontal pattern

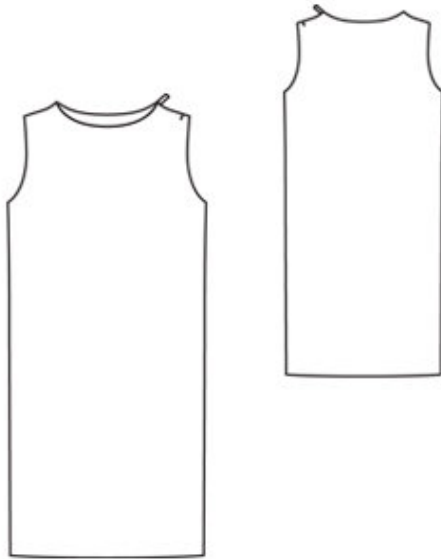
Step 1 — Preparation



This pattern is printed on 8.5 × 11 sheets of plain paper. Do not scale or center pages before printing. Wait until all sheets are printed out before beginning to tape them together. **Do not cut out pattern pieces yet**— Arrange the sheets on a large, hard, flat surface so that they fit together, matching up like numbers and letters (i.e. 6A to 6A). To tape pattern together, fold under the margin of one piece (6A) and tape right against the line of it's matching number/letter (6A).

burda style magazine pattern do not have seam allowance included.
Seam and hem allowances to be added: Seams and edges 1.5 cm (5/8 in).

Step 2 — Cutting out



From the knit fabric, cut pieces:

- 1 Front
- 2 Back

From the imitation leather, cut pieces:

- 3 Front neck facing
- 4 Back neck facing
- 5 Front armhole facing
- 6 Back armhole facing

Step 3 — Cutting

Fold the knit fabric so that selvages meet at centre of the fabric. Pin pattern pieces to the fabric. Fold imitation leather in half. Adhere pattern pieces with tape. Add allowances: 4 cm (15/8 ins) for hems and 1.5 cm (5/8 in) at all other edges. Cut out fabric/leather pieces. Transfer seam lines to pieces (dressmaker's carbon paper)

Step 4 — Darts

Only for size 40 and 42:

Fold front piece along centre of each dart, right side facing in.

Pin dart lines together then stitch dart lines together. Press the darts down.

Step 5 — Zip

Pin the open zipper to left back shoulder edge, with outer side of zipper facing down. Zipper teeth begin at neck edge. The edge of the zipper tape lies 5 mm (3/16 in) from the fabric edge. Use the special presser foot for invisible zippers to sew the zipper in place, up to the slit mark.

Close the zipper.

Pin the second zipper tape to the left front shoulder edge. Again, the edge of the zipper tape lies 5 mm (3/16 in) from the fabric edge

Open the zipper again and stitch the second zipper tape in place, up to the slit mark.

Step 6 — Shoulder seam

Now stitch the remaining shoulder seam. To do this, turn the end of the zipper out of the way, toward the outer side. Stitch the seam from the edge to as close to the slit mark as possible. Trim away the end of the zipper, 2 cm (3/4 in) from the slit end.

Stitch the right shoulder seam. Press the seams open.

Step 7 — Neck edge

First stitch the right shoulder seam on the neck facing. Pin the facing to the neck edge of the dress, right sides together. Turn the facing ends back, 5 mm (3/16 in) before the zipper. Fold the shoulder seam allowances, with the zipper, to the outside and pin. Stitch the neck edge of the dress to the facing.

Trim the seam allowances narrowly. Turn the facing and the slit allowances to the inside.

Press the neck edge. Sew the ends of the facing to the zipper tapes by hand, with small stitches. Loosely sew the facing edge in place, with herringbone stitches.

Step 8 — Armholes

Stitch each front armhole facing piece to back armhole facing piece, along shoulder and side seams. Lay facing unit on armhole edge, right sides together. Pin facing to armhole edge and stitch in place. Turn facing to inside and press. Loosely sew the facing edge in place, with herringbone stitches.

Step 9 — Hem

Finish lower edge of dress. Turn hem allowance to inside and press. Sew hem in place loosely by hand.

BurdaStyle

10/2011 Sleeveless sweater dress