

# 11/2011 Cropped jacket

By: burda style magazine

<http://www.burdastyle.com/projects/112011-cropped-jacket>

---



Cropped jacket burda style magazine patterns FAQv

# Materials

Matelass

---

## Step 1 — Preparation



Paper cut for ANSI A (German DIN A4) prints:

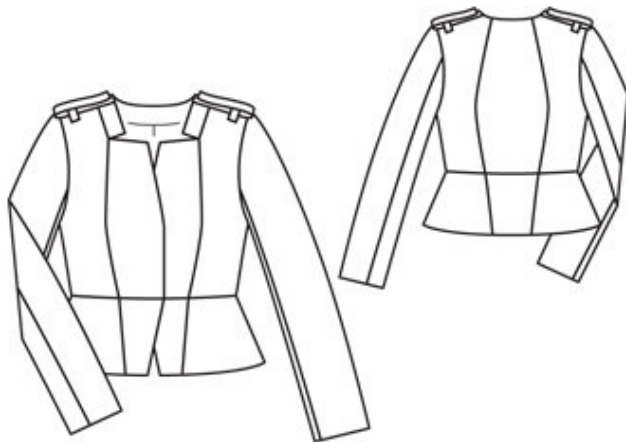
This pattern is printed on 8.5 × 11 sheets of plain paper. Do not scale or center pages before printing. Wait until all sheets are printed out before beginning to tape them together. **Do not cut out pattern pieces yet**— Arrange the sheets on a large, hard, flat surface so that they fit together, matching up like numbers and letters (i.e. 6A to 6A). To tape pattern together, fold under the margin of one piece (6A) and tape right against the line of it's matching number/letter (6A).

**burda style magazine pattern do not have seam allowance included.**

Seam and hem allowances to be added: Seams and edges 1.5 cm (5/8 in).

---

## Step 2 — Cutting out



The pattern layout below shows you how to place the pattern pieces on the fabric. Make sure that the grain line marked on each pattern piece runs parallel to the selvages of the fabric.

Top fabric

1— 1 centre front 2x

2— 2 side front 2x

3— 3 centre back, on a fold 1x

4— 4 side back 2x

5— 5 centre front peplum piece 2x

6— 6 side front peplum piece 2x

7— 7 centre back peplum piece,

8— 8 on a fold 1x

9— 9 side back peplum piece 2x

10— 10 front neck band 2x

11— 11 front facing 2x

12— 12 back facing, on a fold 1x

13— 13 upper sleeve 2x

14— 14 under sleeve 2x

15— 15 shoulder tab 2x

a) 2 loops, a total of 18 cm (7 ins) long, 3 cm (1 1/4 ins) wide (incl. allowances).

Seam and hem allowances:

Use a ruler and tailor's chalk to mark the allowances around the paper pattern pieces: 4 cm (1 5/8 ins) for hem (peplum pieces and sleeve hems) and 1.5 cm (5/8 in) at all other seams and edges. Cut out the fabric pieces on these lines.

Interfacing

All pieces which are shaded grey in the pattern layout must also be cut from interfacing, adding seam allowances. Iron the interfacing pieces to the wrong side of the respective fabric pieces. Also interface the hem and sleeve hem allowances.

Transfer pattern lines to the fabric:

Lay pieces with interfacing right sides together again or fold in half and pin the paper pattern pieces in place. Transfer pattern piece outlines (seam and hem lines) and all other lines and markings on the pattern pieces, except the grain line, to the wrong fabric side with a tracing wheel and Burda copy paper (see detailed instructions included with the pack). Hand baste along the centre front and joining lines for the loops to make these lines visible on the right side of the fabric.

Lining

Preparation of pattern pieces:

Cut lining pieces minus facing. Trim paper pattern piece 2 on the marked lining line. Glue paper pattern pieces 3 + 4 together, from the neck edge. Lay piece 11 on neck edges of piece 3/4 and transfer facing edge to the back piece = lining line (1). Trim away the pattern piece on the lining line and separate pieces 3 and 4 again.

Cut lining:

â— 2 side front 2x

â— 3centre back, on a fold 1x

â— 4 side back 2x

â— 6side front peplum piece 2x

â— 7centre back peplum piece,

â— â— on a fold 1x

â— 8side back peplum piece 2x

12upper sleeve 2x

13under sleeve 2x

Pin centre back of piece 3 to the lining, 2 cm (3/4 in) from fabric fold, to form the ease pleat.

Seam and hem allowances: 1.5 cm (5/8 in) at all seams and edges.

Transfer the pattern piece outlines to the lining pieces.

---

## Step 2 — Vilene Bias Tape/stay tape

Iron to wrong side of the armhole edges and to wrong side of the shoulder seam edges of the front pieces, so that the line of chain stitch meets the marked seam line.

---

## Step 3 — Attach front neck bands and stitch front section seams

Pin each neck band piece to the front edge of a side front piece, from the upper edge (seam number 1) to the seam mark at seam number 2, right sides facing. Stitch, beginning and ending stitching exactly at seam mark (2). Turn the seam allowances of the band pieces up, at the seam mark, and pin in place (3). Lay the centre front pieces right sides together with the side front pieces. Pin the front section seams, from the seam mark at seam number 2. Stitch, beginning and ending exactly at seam mark (4). Press seam allowances of section seams and of band joining seams each open.

---

## Step 4 — Back section seams

Lay the side back pieces on the centre back piece, right sides facing. pin the section seams. Stitch (5). Press seam allowances open.

---

## Step 5 — Shoulder seams

Lay the jacket fronts, with attached front band pieces, right sides together with the back. Pin the shoulder seams, matching the band joining seam to the seam mark on the back shoulder edge. Stitch (6). Press seam allowances open.

---

## Step 6 — Peplum

Lay the side front peplum pieces right sides together with the centre front peplum pieces. Pin the front section seams. Lay the side back peplum pieces on the centre back peplum piece. Pin the section seams. Stitch. Press seam allowances open.

Pin the front peplum pieces right sides together with the lower edges of the jacket fronts. Match seams and seam lines. Stitch (7). Pin the back peplum piece right sides together with the lower edge of the jacket back. Stitch. Press seam allowances open.

---

## Step 7 — Shoulder tabs

Fold each tab piece in half lengthwise. Pin the long edges and the straight narrow edges together. Stitch. Trim the seam allowances, trimming the corners diagonally (8). Turn tabs right side out. Press tabs. Lay the tabs on the jacket, over the shoulder seams. Baste open edges of tabs to neck edge (9).

---

## Step 8 — Loops

Neaten long edges of fabric strip for loops. Press long edges to wrong side, 7 mm (1/4 in) wide, for a finished width of 1.5 cm (5/8 in). Cut strip into 2 equal pieces. Turn ends of each piece under, for a finished length of 5.5 cm (2 1/4 ins). Pin loops to jacket as marked on pattern. Sew ends of loops in place by hand.

---

## Step 9 — Face the front edges, neck bands, and back neck edge

Pin the shoulder edges of the front facings right sides together with the shoulder edges of the back facing, noting seam number 9. Stitch (10). Press seam allowances open. Fold the narrow edges of neck bands up and pin in place (11). On the inside, turn the allowances of the front section seams onto the side fronts and pin (see also illustration 13). Lay the facings right sides together with the jacket. Pin the front edges in place, from neck edge to the lower edge and pin the lower edges in place. Pin upper neck edges in place as far as corner (12), not catching seam allowances of front section seams or band pieces. Beginning at each section seam, stitch the fronts to the facings, at the hem edge stitching only to approx. 2 cm (3/4 in) before the edge of the facing. Secure start and end of each seam (13). Fold the seam allowances on the narrow edges of the neck bands down. Turn the allowances of the band joining seam onto the front. Pin the band pieces and the back neck edge to the facing and stitch, as a continuous seam (14).

Trim the seam allowances, trimming the corners diagonally. Clip the facing into the corners of the neck edge, close to the stitching (15). Turn the facing to the inside. Press the edges.

---

## Step 10 — Side seams

Lay the jacket fronts right sides together with the back. Pin the side seams. Stitch. Press seam allowances open.

---

## Step 11 — Hem

Press the hem allowance to the inside and stitch in place loosely by hand.

---

## Step 12 — Sleeves

Lay each under sleeve pieces right sides together with an upper sleeve pieces. Pin the back sleeve seam. Stitch (16). Press seam allowances open.

To ease the sleeve caps, first stitch two lines of machine basting (= longest stitch setting), one on each side of the marked seam line, from  $\hat{a}-\phi$  to  $\hat{a}-\phi$ . Do not yet pull bobbin threads. Fold the sleeves lengthwise, right side facing in. Pin the front sleeve seams. Stitch. Press the seams open. Press hem allowance to the inside and stitch hem loosely by hand.

---

## Step 13 — Setting in the sleeves

First pin each sleeve only to the underarm curve of the armhole, right sides facing, matching seam mark on under sleeve to seam mark on side piece and matching seam marks 13 on upper sleeve and front (17). Then pin the shoulder mark on the sleeve cap to the shoulder seam. Now ease the fabric of the sleeve cap, along the bobbin threads of the machine basting, until the sleeve matches the armhole. Pin the sleeve cap in place, distributing the eased fullness evenly. Work from the sleeve side to baste and stitch the sleeve in place (18). Turn allowances toward sleeve.

---

## Step 14 — Sew the lining

For the ease pleat, stitch along the marked centre back of lining, from upper edge down and from slit mark up, each approx. 5 cm (2 ins) long (19). Press pleat to one side. Stitch section seams  $\hat{a}-$  also on peplum  $\hat{a}-$  and stitch shoulder seams, side seams and sleeve seams. Press the seams open. Stitch the peplum to lower edge of lining. Set in sleeve linings.

---

## Step 15 — Sew the lining in the jacket

On each front facing, turn allowance on the lower edge down. Pin the lining right sides together with the facing, matching shoulder seams and seam lines. Stitch (20). Turn allowances toward lining. Lay lining inside jacket, wrong sides facing. Pull linings into sleeves (wrong sides facing).

Pin the peplum joining seams together exactly. Fold the lower edge of the lining to the wrong side, along the edge of the jacket, and press the fold edge lightly. Push the fold edge up in a shallow curve, toward upper edge of hem allowance and pin (21). Sew lower edges of facing and lining to hem allowance by hand. Turn in edges of sleeve linings and sew to hem allowances.

---

## Step 16 — Snap fastener

Cover the snap fastener halves with lining fabric. Cut two circles of lining fabric, slightly larger than the snaps. Hand-sew small running stitches by along the edge (22) and do not cut the thread. Lay the snap half face down on the wrong side of the fabric and pull the thread to gather the lining material smoothly around the edge of the snap. Now use the needle and thread to sew the gathered edge together with crisscrossing stitches (23). Sew the snap halves to the centre front, on the peplum joining seam, with the upper snap half on the inside of the right front. Take even, regular stitches and exit the needle on the outer side of the jacket. Sew the lower snap half to the left front edge.

---

## **Step 17 — Sew ends of shoulder tabs in place**

Pass each tab through a loop. Next to sleeve attachment seam, fold tab back toward neck edge and sew end of tab in place, approx. 2 cm (3/4 in) from the edge, with a small cross -stitch, by hand, thereby also catching the facing.

---

**BurdaStyle**

11/2011 Cropped jacket