

01/2012 Bath robe

By: burda style magazine

<http://www.burdastyle.com/projects/012012-bath-robe>



Bath robe burda style magazine patterns FAQ

Materials

Silk chiffon

Step 1 — Preparation



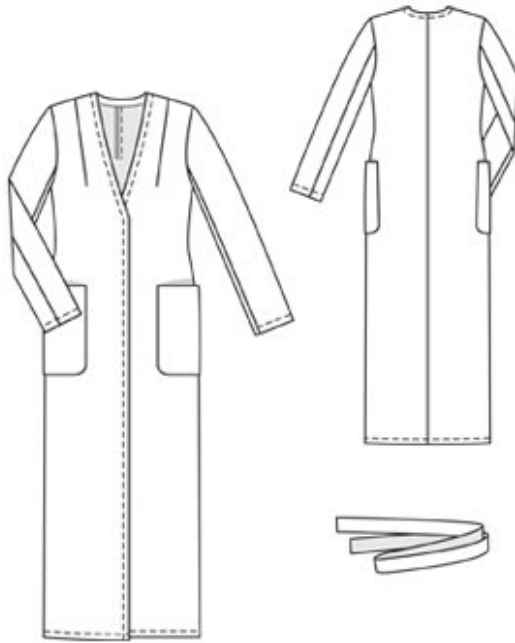
Paper cut for ANSI A (German DIN A4) prints:

This pattern is printed on 8.5 × 11 sheets of plain paper. Do not scale or center pages before printing. Wait until all sheets are printed out before beginning to tape them together. **Do not cut out pattern pieces yet**— Arrange the sheets on a large, hard, flat surface so that they fit together, matching up like numbers and letters (i.e. 6A to 6A). To tape pattern together, fold under the margin of one piece (6A) and tape right against the line of it's matching number/letter (6A).

burda style magazine pattern do not have seam allowance included.

Seam and hem allowances to be added: Seams and edges 1.5 cm (5/8 in).

Step 2 — Cutting out



Chiffon:

1 front 2x

2 back 2x

3 upper sleeve 2x

4 under sleeve 2x

5 back facing, on a fold 1x

6 pocket 2x

a) tie belt 145 — 150 — 155 — 160 — 165 cm (57 — 59 — 61 — 63 — 65 ins) long, 3 cm (1 1/4 ins) wide,

b) bias strip to bind seams, a total of 8.00 m (8 3/4 yds) long, 4 cm (5/8 ins) wide (incl. allowances).

Velours fabric (lining):

pieces 1 to 4, piece 6, and piece a.

Step 3 — Lining

Lay lining pieces wrong sides together with pieces of main fabric and baste. Main fabric extends 1 cm (3/8 in) wide at front vertical edges, front neck edges, and hem edges. Treat these basted-together pieces each as one layer of fabric from now on.

Step 4 — Darts

Stitch front darts and press toward centre.

Step 5 — Center back seam

Stitch centre back seam, side seams, and sleeve seams. Press seam allowances to one side.

Step 6 — Bind seam edges

Fold the binding strip in half lengthwise and press, right side facing out. Unfold strip out flat again. Now turn one long edge in to the pressed fold and press. Stitch other edge of strip to edge of seam allowances, stitching 7 mm (1/4 in) from edge. Fold strip over edge and pin. Topstitch close to edge of binding.

Step 7 — Hem

At hem and sleeve hem edges, fold extending edges of main fabric over edge of lining and press. Press hem allowances to inside and stitch in place. Hem vertical front edges and front neck edges in same manner, making several small folds in allowance to take in extra width at point of neck edge.

Step 8 — Shoulder seams

Stitch shoulder seams — allowance of back extends at neck edge. Press seam allowances onto back. Bind edges of seam.

Step 9 — Facings

Stitch back facing right sides together with back neck edge. Trim seam allowances. Turn facing to inside and press edge. Turn in inside edge of back facing and baste. Stitch facing edge in place, from right side.

Step 10 — Pockets

Stitch pocket pieces of main fabric and lining together along all edges, right sides facing, leaving a section of seam open, for turning. Turn pockets right side out. Sew openings closed. Edgestitch pockets in place on garment, at abutting lines.

Step 11 — Sleeves

Set in sleeves, easing sleeve caps. Bind allowances of sleeve joining seams.

Step 12 — Tie belt

Stitch belt pieces right sides together, leaving a section of seam open, for turning. Turn belt right side out. Sew opening closed.

01/2012 Bath robe