

# Tie Waist Blouse 05/2012

By: burda style magazine

<http://www.burdastyle.com/projects/tie-waist-blouse-052012>

---



Tie waist blouse sewing pattern. This gorgeous top has a separate, tie waist front piece which creates a great layering effect and a nice silhouette.

## Materials

Stretch jersey, 140 cm (55 ins) wide: 1.50, 1.55, 1.60, 2.15, 2.15 m (1 3/4, 1 3/4, 1 3/4, 2 1/2, 2 1/2 yds).

Vilene Bias Tape/stay tape. 3 sew-on snap fasteners.

---

## Step 1 — Preparations



Paper cut for ANSI A (German DIN A4) prints:

This pattern is printed on 8.5 × 11 sheets of plain paper. Do not scale or center pages before printing. Wait until all sheets are printed out before beginning to tape them together. **Do not cut out pattern pieces yet**— Arrange the sheets on a large, hard, flat surface so that they fit together, matching up like numbers and letters (i.e. 6A to 6A). To tape pattern together, fold under the margin of one piece (6A) and tape right against the line of it's matching number/letter (6A).

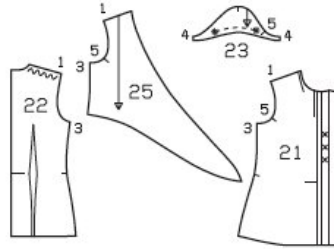
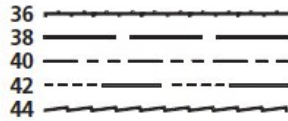
Trace the pattern pieces from the pattern sheet following the lines and markings for the correct size and style (105). (This pattern also includes lines and pieces for style 103 and 104).

**burda style magazine pattern do not have seam allowance included.**

Seam and hem allowances to be added: Seams and edges 1.5 cm (5/8 in), hem 2 cm (3/4 in), no allowance on vertical edge of front self-facing. On piece 25, 1 cm (3/8 in) on slanted front and lower edges.

---

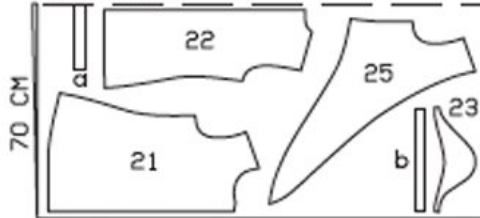
## Step 2 — Cutting out



Pattern pieces 21, 22, 23 and 25

Sz. 36 - 40

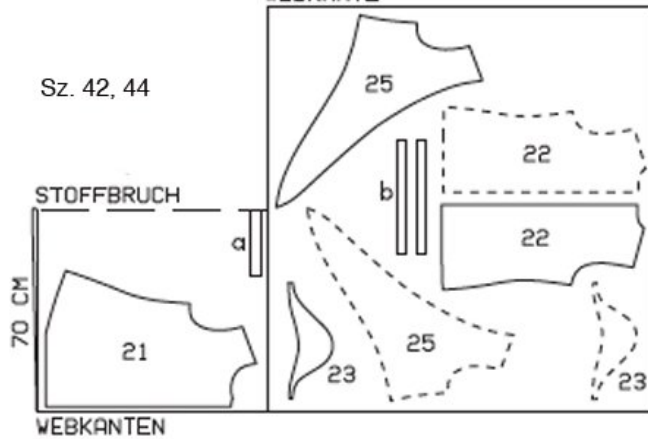
STOFFBRUCH



webbkanten = selvage  
stoffbruch = fabric fold

WEBKANTE

Sz. 42, 44



Fabric width 140 cm,

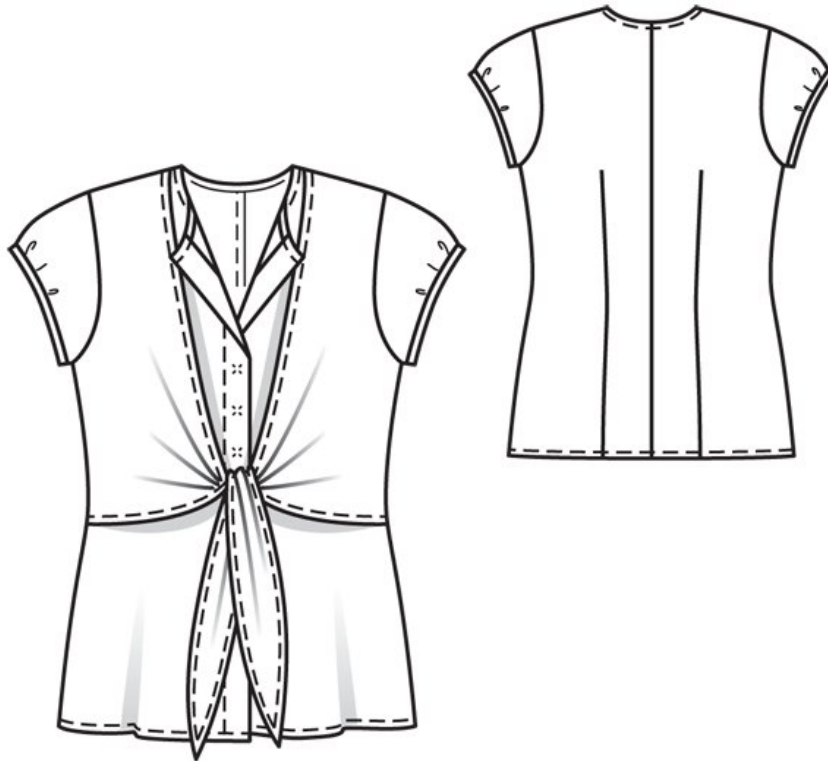
- 21 front 2x
- 22 back 2x
- 23 sleeve 2x
- 25 front wrap piece 2x

Also draft and cut the following pieces, not included in the pattern sheet:

- a) facing strip for neck edge, 42, 43, 44, 45, 46 cm (16 1/2, 17, 17 1/4, 17 3/4, 18 1/8 ins) long, 4 cm (1 5/8 ins) wide (incl. allowances),
- b) 2 binding strips for lower sleeve edges, 34, 35, 37, 38, 40 cm (13 1/2, 13 3/4, 14 1/2, 15, 15 3/4 ins) long, 3 cm (1 1/4 ins) wide (incl. allowances).

Vilene Bias Tape/stay tape: Iron to wrong side of neck edges. Also iron Bias Tape/stay tape to wrong side of wrap pieces, along slanted front and lower edges.

### Step 3 — Sewing



Note: Stitch seams on stretch fabrics with a special stretch stitch with a narrow zigzag stitch.

Stitch centre back seam and back darts. Press seam allowances to one side and press darts toward centre.

Neaten edge of allowances on slanted front and lower edges of front wrap pieces. Press allowances on these edges to wrong side and stitch 5 mm (3/16 in) from edge. Lay front wrap pieces on fronts, with wrong side facing right side. Baste to side seam edges, armhole edges, and shoulder seam edges.

Stitch side seams and shoulder seams. Neaten seam allowances together and press allowances onto back.

Press hem allowance to inside, turn half in, and stitch in place.

Fold self-facings to inside on fold line and press. Turn folded facings to outside and pin to neck edge. Fold facing strip for neck edge lengthwise, with right side facing out, and press. Pin folded facing strip to neck

edge so that fold edge of strip lies on garment piece, 1 cm (3/8 in) past seam line. Ends of strip lie on facings. Stitch along line of neck edge. Trim seam allowances. Turn facing strip to inside. Turn front facings to inside and baste. Sew to hem edge. Topstitch front edges as marked. Topstitch 7 mm (1/4 in) from neck edge.

Trim away allowances on lower sleeve edges. Gather lower sleeve edges between asterisks to 10 cm (4 ins). Fold binding strips in half lengthwise and press, right fabric side facing out. Unfold strips out flat again. Now turn each long edge in to the pressed fold and press again. Unfold binding strips and pin to sleeve edges, from right fabric side. Stitch 7 mm (1/4 in) from edge, along the fold. Turn binding down. Stitch sleeve seams, also stitching ends of binding strip together. Fold binding over sleeve edges to inside, turn edges under, and baste to joining seam. Work from right side of sleeve to edge stitch binding in place.

Set in sleeves.

Sew top halves of snap fasteners to inside of right front as marked, taking even stitches and exiting needle on right fabric side. Sew bottom halves of snaps to left front edge to match.

---

**BurdaStyle**

Tie Waist Blouse 05/2012