

Asymmetric Dress 04/2012

By: burda style magazine

<http://www.burdastyle.com/projects/asymmetric-dress-042012--2>



This dress features a crossover centre front closure complete with a waist casing and drawstring. This dress also has an interesting front neckline that gives a layered look to the style. It's a great dress for day time that has pockets and unique side slits with bands. You could even omit the sleeves to make a great sleeveless dress!

Step 1 — Preparations



This pattern is printed on 8.5 × 11 sheets of plain paper. Do not scale or center pages before printing. Wait until all sheets are printed out before beginning to tape them together. **Do not cut out pattern pieces yet**— Arrange the sheets on a large, hard, flat surface so that they fit together, matching up like numbers and letters (i.e. 6A to 6A). To tape pattern together, fold under the margin of one piece (6A) and tape right against the line of it's matching number/letter (6A).

Trace the pattern pieces from the pattern sheet following the lines and markings for the correct size and the correct style (106). (This pattern also includes pattern pieces, lines and markings for style 105 that should be ignored.)

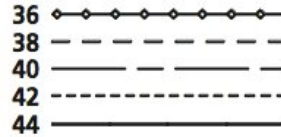
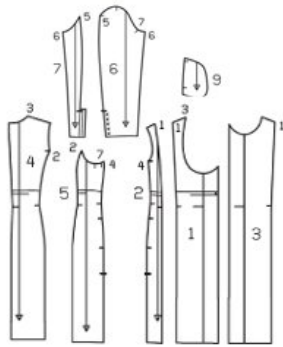
burda style magazine pattern do not have seam allowance included.

Seam and hem allowances to be added:

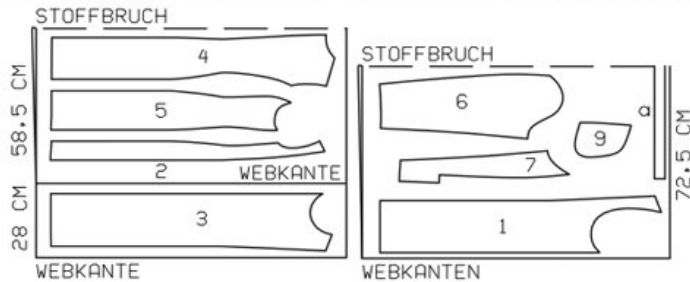
Seams and edges 1.5 cm (5/8 in), hem and sleeve hems 5 cm (2 ins).

Step 2 — Cutting Out

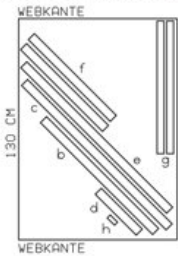
Pattern pieces 1 to 7 and 9



Linen fabric, 145 cm wide. Cut on a double layer of fabric as shown in diagram.



Batiste for binding, 135 cm wide. Cut on single layer of fabric as shown in diagram.



Webkante = Selvage
Stoffbruch = Fabric fold

Linen:

- 1 centre front 2x
- 2 side front 2x
- 3 left inside
- front piece 1x
- 4 centre back 2x
- 5 side back 2x
- 6 sleeve front 2x
- 7 sleeve back 2x
- 9 pocket piece 2x

Draft the following pattern pieces not included in the pattern:

- a) facing strip for drawstring casing,
length: 85 88 92 96 100 cm (33 1/2 34 3/4 36 1/4 37 3/4 39 1/2 ins)
width: 4 cm (15/8 ins) including allowances

Batiste (contrasting fabric):

All bands cut on bias (incl. allowances), all 5 cm (2 ins) wide:

b) right front band, 93 cm (36 3/4 ins) long,

c) left front band, 116 117 118 119 120 cm (45 3/4 46 46 1/2 47 47 1/4 ins) long,

d) left neck edge band (inside piece), 30 31 32 33 34 cm (12 12 1/4 12 3/4 13 13 1/2 ins) long,

e) neck band, 110 113 116 119 121 cm (43 1/2 44 1/2 45 3/4 47 47 3/4 ins) long,

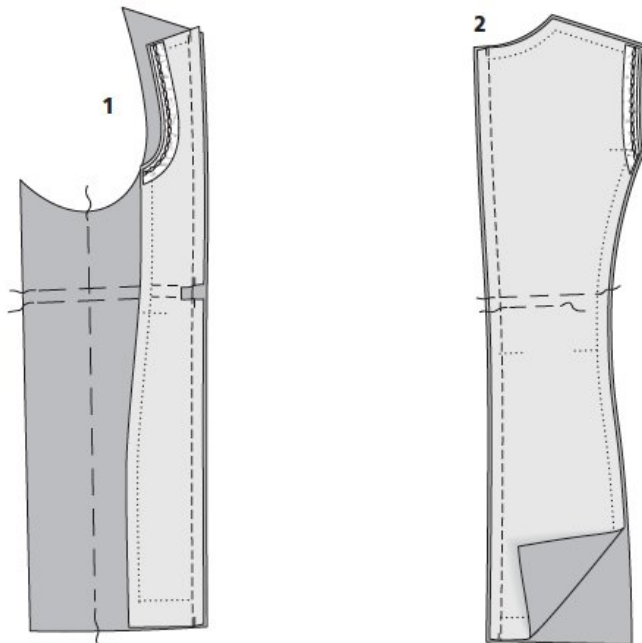
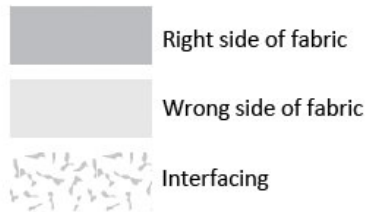
f) 2 side slit bands, 68 cm (26 3/4 ins) long,

g) tie band, a total of 140 150 150 160 160 cm (55 1/4 59 59 63 63 ins) long,
by 4 cm (15/8 ins) wide including allowances

h) bias strip for 1 loop,
6 cm (2 1/4 ins) long, by 2 cm (3/4 in) wide including allowances

Vilene Bias Tape/stay tape: Iron to wrong side of armhole edges.

Step 3 — Sewing Steps 1 & 2



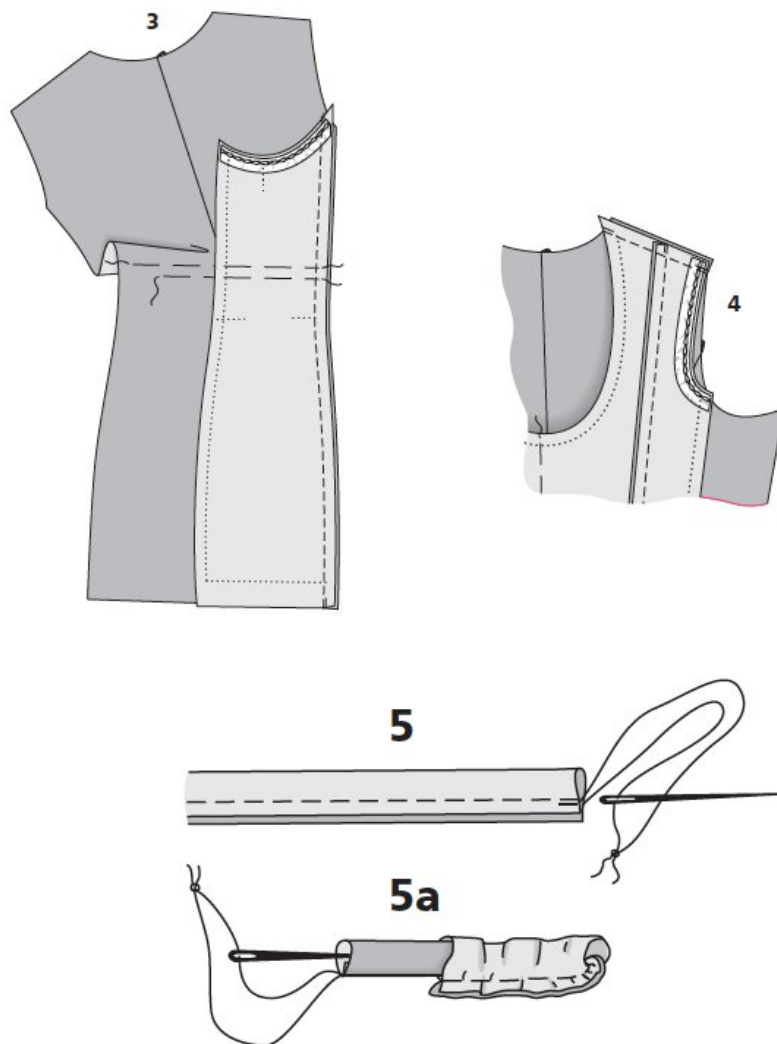
Front section seams:

Lay side fronts right sides together with centre fronts. Pin section seams (seam number 1). Stitch, on left side front leaving an opening in seam, between marked stitching lines for casing. Clip seam allowances close to line of stitching at each last stitch. Between clips, press allowance onto side front and turn edge under to 7 mm (1/4 in) wide. On both fronts, trim allowances of section seams to 7 mm (1/4 in) wide, neaten together, and press onto centre fronts (image 1).

Centre back seam:

Lay centre back pieces right sides together. Pin centre seam. Stitch (image 2). Trim seam allowances to 7 mm (1/4 in) wide, neaten together, and press to one side.

Step 4 — Sewing Steps 3-5



Back section seams:

Lay side back pieces right sides together with centre back. Pin section seams (seam number 2). Stitch (image 3). Trim allowances to 7 mm (1/4 in) wide, neaten together, and press toward centre back.

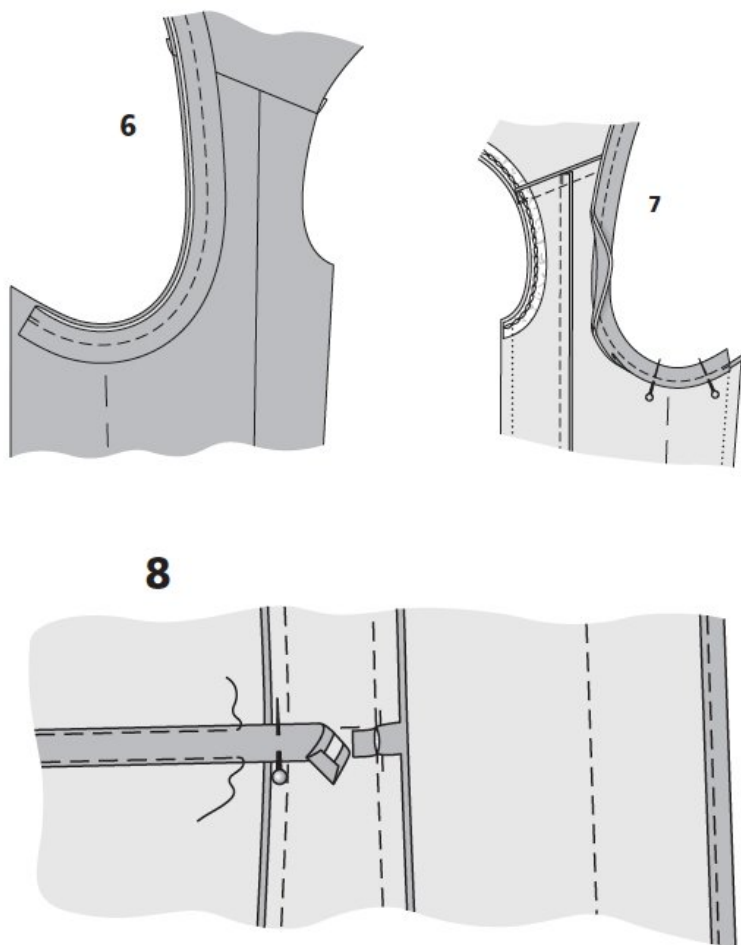
Shoulder seams:

Lay front pieces right sides together with back. Pin shoulder seams. Stitch (image 4). Trim seam allowances to 7 mm (1/4 in) wide, neaten together, and press toward back.

Button loop:

Fold bias strip in half lengthwise, right side facing in. Stitch 4 mm (a generous 1/8 in) from fold edge. On one end, leave a length of thread hanging, for turning. Insert ends of thread into a darning needle and knot securely (image 5). Push needle through fabric tube, eye end first, to turn right side out (image 5a). Lay strip in a loop and set aside.

Step 5 — Sewing Steps 6-8



Neck band (e):

Fold one end of neck band in half, with right side facing in. Stitch edges together, 5 mm (3/16 in) from edge. Turn neck band right side out and fold in half lengthwise, wrong side facing in and press. Pin band to neck edge so that fold edge of band lies on fronts and back, 1.5 cm (5/8 in) wide, and open edge lies on seam allowances. The seamed end meets marked front edge of left front and the seam allowance of front edge extends. Work from inside of jacket to stitch along neck edge marking (image 6).

Trim allowance of neck edge to 5 mm (3/16 in) wide, not catching seam allowance of band. Press seam allowances onto fronts and back. Fold allowances of band over seam allowances of front and back and pin in place (image 7). Slide button loop under allowance of band joining seam on right front, close to shoulder seam, and pin. Edgestitch allowances of band joining seam in place.

Side seams:

Lay fronts right sides together with back. Pin side seams (seam number 4). Stitch side seams together leaving openings for pocket and side slits. Trim seam allowances to 7 mm (1/4 in) wide, neaten together, and press toward back.

Inseam pockets:

On front pocket opening edges, turn edges of allowances under so that allowances are 7 mm (1/4 in) wide, and stitch. Pin pocket pieces to seam allowances of back. Stitch pocket pieces in place along seam line on pocket opening edge and close to side seam above and below pocket opening. Press pocket pieces forward and baste to underside of fronts. To stitch pockets in place, pin paper pattern piece to front and stitch along edge of pattern piece. Take a few stitches across ends of pocket openings.

Hem:

Press hem allowance to inside, turn edge under to a hem width of 3.5 cm (1 1/2 ins), and edgestitch in place.

Side slits:

Clip allowances of side seams at top end of slits. Fold bands lengthwise, right side facing in. Stitch band ends closed, 1.5 cm (5/8 in) from edges. Trim allowances to 5 mm (3/16 in) wide. Turn bands right side out and press. Pin bands to slit edges so that fold edge lies on front and back, 1.5 cm (5/8 in) wide, and open band edges lie on the seam allowances. The seamed ends of the band meet hem edge. Stitch bands in place. Trim allowances of front and back slit edges to 5 mm (3/16 in) wide (not allowances of bands!). Press seam allowances away from bands. Fold allowances of bands over slit allowances and stitch in place, from lower edge to top of slit.

Left front edge:

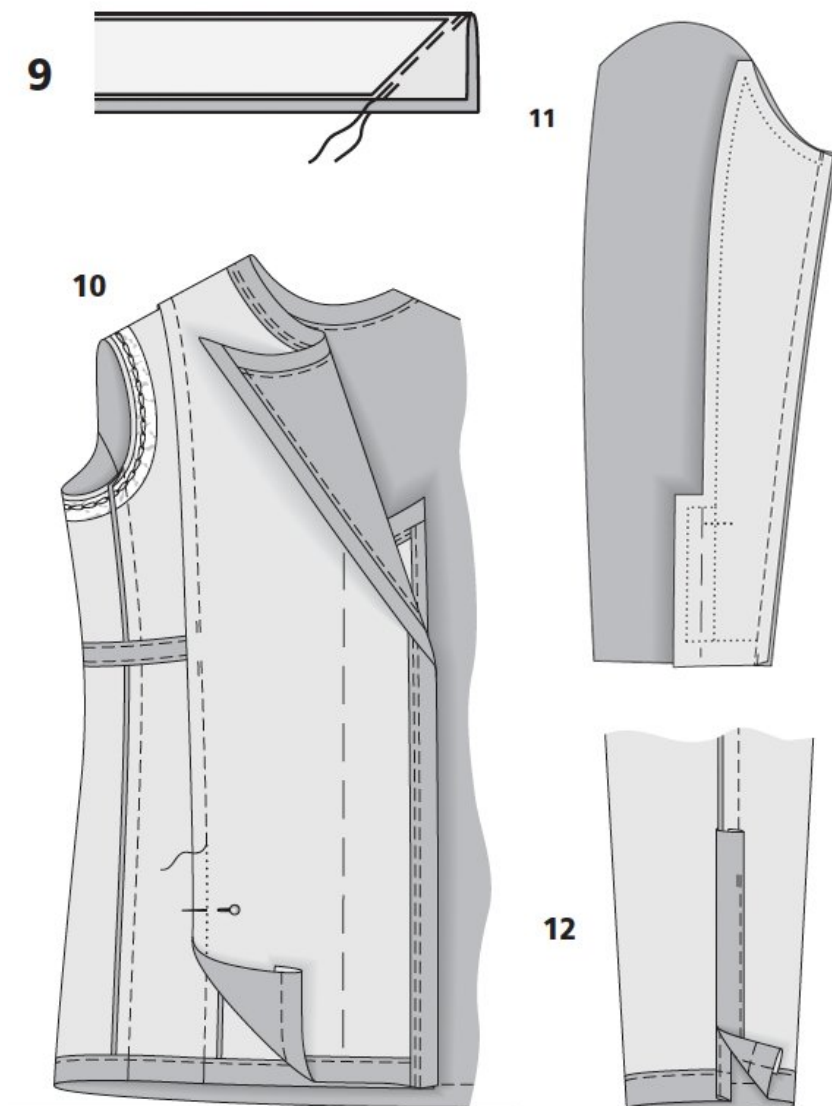
Press allowance to inside, turn edge under to a width of 7 mm (1/4 in), and edgestitch in place.

Drawstring casing:

On right front, work a small opening (like a buttonhole) for the casing, as marked on pattern, catching a small piece of fabric on wrong side, for reinforcement.

Press long edges of casing strip (a) to wrong side, 1 cm (3/8 in) wide finished width 2 cm (3/4 in). Press one end of strip to inside, 5 mm (3/16 in) wide. Pin casing strip to jacket, wrong sides together, over marked stitching lines for casing the pressed-under end meets slit edge of left front section seam. Stitch casing strip in place, along marked stitching lines (image 8).

Step 6 — Sewing Steps 9-12



Right front band:

Fold band (b) in half lengthwise, right side facing in. Stitch along one end at an angle, to match end of template (image 9). On angled end, mark attachment seam 1 cm (3/8 in) from open edges. Beginning at angled seam, measure 54 cm (21 1/4 ins) along attachment edge (= lower end of band) and stitch across end of band. Trim seam allowances to 5 mm (3/16 in) wide. Turn band right side out and press. Stitch band to right front edge of front, from upper edge, as described for neck edge. Trim seam allowances of front and neck band. Fold allowance of band over seam allowances of attachment seam and sew to neck band with small stitches by hand. Edgestitch remaining allowance in place.

Left front inside piece (piece 3):

Press hem allowance to inside, turn edge under to a hem width of 3.5 cm (1 1/2 ins), and edgestitch in place.

Stitch neck band (d) to neck edge as described for jacket seamed end of band meets marked shoulder seam line.

Sew left front band © to front edge of inside piece as described for right front band, but measure as follows for bottom end of band,

Left front band

size 36: 104 cm (41 ins),

size 38: 104.5 cm (41 1/4ins),

size 40: 105.5 cm (41 5/8 ins),

size 42: 106.5 cm (42 ins),

size 44: 107 cm (42 1/4 ins).

Right front band

84 cm (33 ins)

On inside piece, neaten allowances of shoulder edge and side edge. Lay inside piece on left centre front, with right side facing wrong side, and matching marked seam lines of shoulder edge and side edge to shoulder seam and section seam.

Pin inside piece to seam allowances (image 10). Work from right side of jacket to stitch exactly along left shoulder seam and left section seam, catching inside piece.

Sleeves:

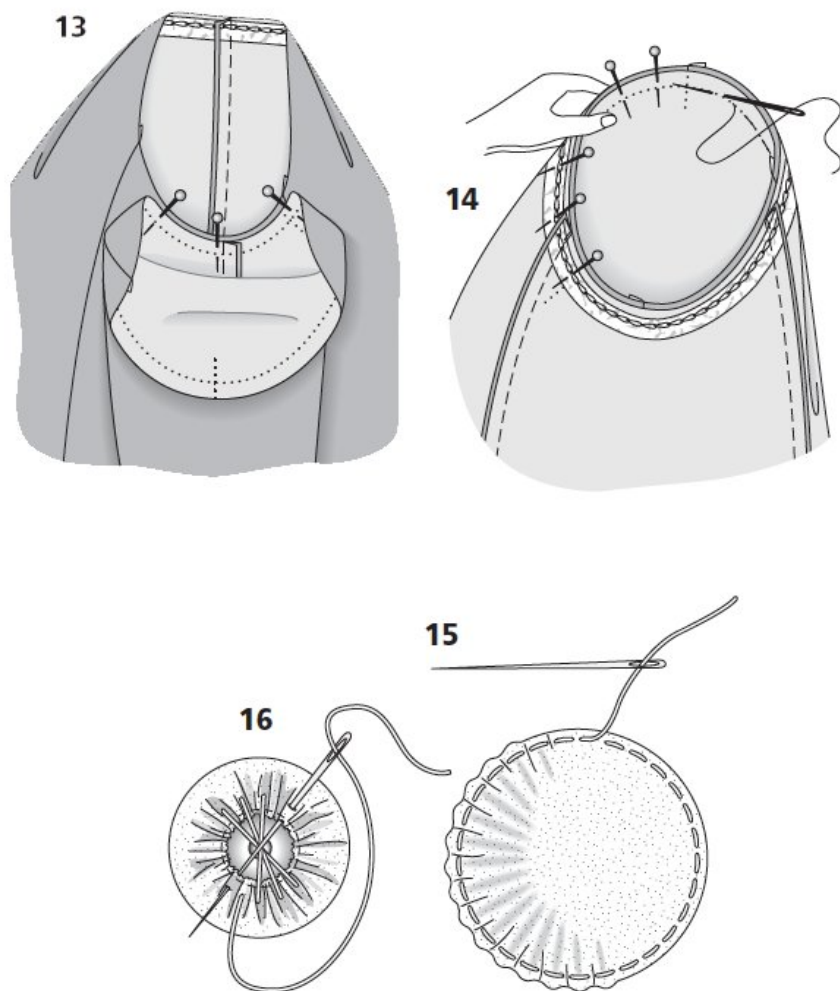
Lay sleeve back pieces right sides together with sleeve front pieces. Stitch lower sleeve seams (seam number 6) (image 11). Trim seam allowances to 7 mm (1/4 in) wide and press onto sleeve front pieces.

Press each sleeve hem allowance to inside, turn edge under to a hem width of 3 cm (1 1/4 ins), and edgestitch in place.

Fold each sleeve lengthwise, right side facing in. Stitch back sleeve seam from upper edges to slit mark. Press seam allowances onto sleeve front pieces. Press slit allowance on sleeve front piece to inside, turn edge under to a width of 1 cm (3/8 in), and edgestitch in place. On back slit edge, press facing to inside on fold line, turn edge under to a width of 1.5 cm (5/8 in), and edgestitch in place (image 12). Above slit, neaten edges of seam allowances together.

At upper end of slit on each sleeve front, stitch a thread bar, approx. 5 mm (3/16 in) long, with closely spaced zigzag stitching, thereby catching the underlap.

Step 7 — Sewing Steps 13-16



Setting in sleeves:

Pin each sleeve to armhole edge, right sides together, first pinning only along underarm curve. Match lower sleeve seam to seam mark with no seam number on side back. Match the seam marks (7) on sleeve and side

back (image 13). Then pin seam mark on sleeve cap to shoulder seam. Pin remaining sleeve cap to armhole edge. Working from the sleeve side, baste and stitch sleeve to armhole edge (14). Trim seam allowances to 7 mm (1/4 in) wide and neaten edges together.

Tie band:

Stitch tie band pieces together. Press each end to wrong side, 5 mm (3/16 in) wide. Sew band as described for button loop, but stitch 1 cm (3/8 in) from fold edge. Sew ends of band closed. Use a safety pin as a bodkin to pull tie band into casing.

Snap fasteners, button:

Cover snap fastener halves with batiste, as follows: Cut circles of fabric, slightly larger than the snap halves. Stitch short running stitches along edge of fabric. Do not cut thread, but leave ends hanging (image 15). Lay snap half face down on circle of fabric. Pull the thread so that the fabric folds smoothly over the outer edge of the snap half. Use the thread to sew the fabric edges together, crosswise across the back (image 16). Hide the thread ends well.

Sew the upper snap halves under the front slit edges on sleeves, as marked on pattern, taking even stitches and exiting needle on right side of fabric. Sew lower snap halves to underlaps of back slit edges, to match.

Lay centre fronts (piece 1) together, matching centre fronts. Close upper ends of front edges with one snap fastener each.

Sew button to upper end of inside piece, to match loop.

BurdaStyle

Asymmetric Dress 04/2012