

Long Sleeve Tiered Dress 06/2012

By: burda style magazine

<http://www.burdastyle.com/projects/long-sleeve-tiered-dress-062012>



This is a whimsical dress that features a tiered skirt with gathers and an embroidered hemline. This dress can be worn out-and-about during warm spring and summer days. Throw on a nice blazer ovetop and add heels for a nighttime look. You could even omit the sleeves for a dress fit for the summer! Length from waist 58 cm (23 ins) 3/4-sleeves approx. 48 ins (19 ins) long

Step 1 — Preparations



This pattern is printed on 8.5 × 11 sheets of plain paper. Do not scale or center pages before printing. Wait until all sheets are printed out before beginning to tape them together. **Do not cut out pattern pieces yet**— Arrange the sheets on a large, hard, flat surface so that they fit together, matching up like numbers and letters (i.e. 6A to 6A). To tape pattern together, fold under the margin of one piece (6A) and tape right against the line of it's matching number/letter (6A).

Trace pieces from the pattern sheet according to your size.

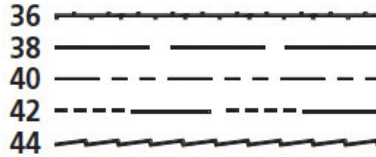
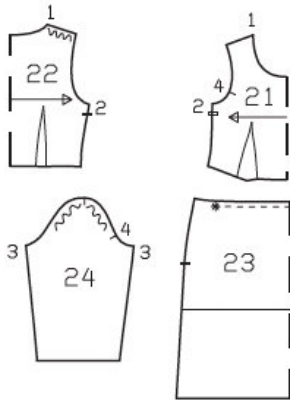
burda style magazine pattern do not have seam allowance included.

Seam and hem allowances to be added:

Seams and edges 1 cm (3/8 in), no allowance on lower edges of skirt panels, no allowance on lower sleeve edge, and no allowance on lower flounce edge.

Step 2 — Cutting Out

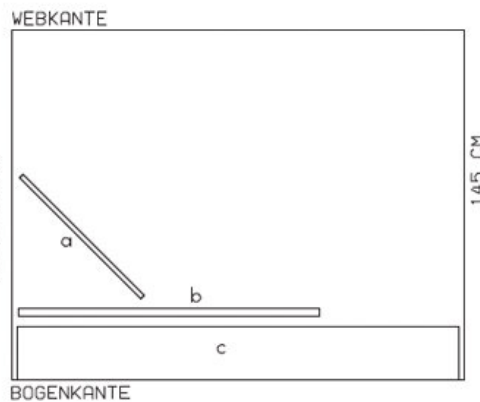
Pattern Pieces 21-24



Double layer of fabric 145cm wide



Single layer of fabric 145cm wide



Webkante = selvage
 Stoffbruch = fabric fold
 Bogenkante = curved edge
 Schnittkanten = cutting edge

- 21 front, on a fold 1x
- 22 back, on a fold 1x
- 23 skirt panel, on a fold 2x
- 24 sleeve 2x

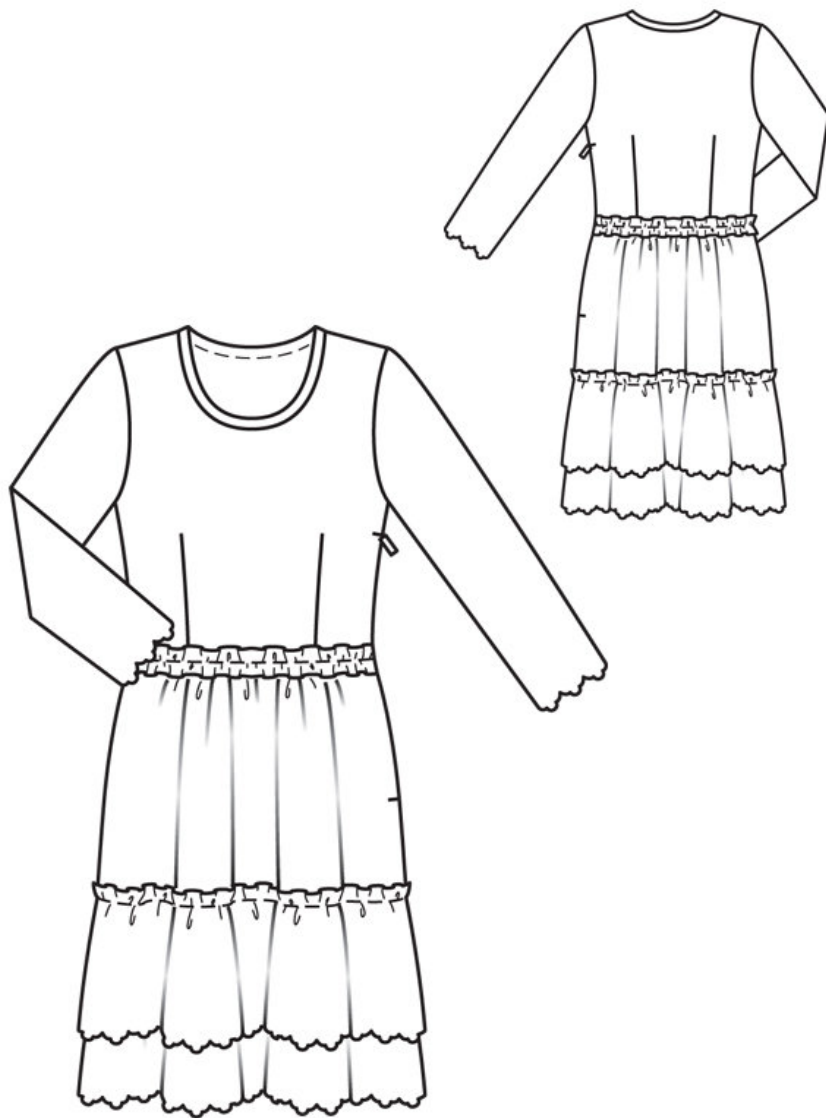
Draft the following pattern pieces not included in the pattern:

- a) neck band, cut on bias,
 length: 63 65 67 69 71 cm (24 3/4 25 3/4 26 1/2 27 1/4 28 ins)
 width: 2 cm (3/4 in), finished width 1 cm (3/8 in)
- b) frill for skirt attachment seam,
 length: 105 110 115 120 125 cm (41 1/2 43 1/2 45 1/4 47 1/4 49 1/4 ins)
 width: 3.5 cm (1 1/2 ins) (incl. allowances)
- c) hem flounce,
 length: 165 170 175 180 185 cm (65 67 69 71 72 3/4 ins)

width: 22 cm (8³/₄ ins)

The scalloped edge of the fabric is used as the lower edges of the skirt pieces, sleeves, and hem flounce.

Step 3 — Sewing



Stitch the darts in the front and back bodice pieces starting at dart edges and stitching towards dart tip along dart lines. Don't backstitch at dart tip, this will cause puckering, instead gently taper off at dart tip and leave long loose thread tails and tie them in a knot. Press dart intakes toward centre front/back.

Stitch shoulder seams, beginning and ending stitching exactly on marked neck edge. Neaten seam allowances together and press towards back bodice.

On neck edge, trim away seam allowance. Pin neck band right sides together with neck edge, overlapping band ends at one shoulder seam. Stitch band in place, along centre. Press lower band edge up over seam. Leave band and neck edges unneaten.

Stitch right side seam of dress bodice, right sides together.

Stitch right side seam of skirt, right sides together. Stitch two basting stitch lines on upper edge of skirt.

Gather upper edge of skirt, between asterisks, to:

24 25 26 27 28 cm (9 1/2 10 10 1/4 10 3/4 11 1/8 ins).

Stitch skirt to bodice along waistline. Press seam allowances up towards bodice.

Gather frill for skirt attachment seam along centre. Pin frill to dress, over skirt attachment seam, with wrong side facing right side. Stitch in place along line of gathering. Baste frill ends to left side edges.

Sew invisible zipper to left side edges, between slit marks. Leave top ends of zipper tape loose. Teeth of zipper begin at slit mark. Stitch left side seam from armhole down and from hem line up, each to zipper.

Stitch ends of hem flounce piece together. Measure and mark a 2 cm (3/4 in) wide head on upper edge of flounce. Gather flounce on each side of this marking. Stitch flounce to lower section of dress, on marked joining line, with wrong side facing right side, stitching between lines of gathering.

Stitch sleeve seams to close sleeves. Sew seam allowances to lower sleeve edges by hand.

Set in sleeves, easing sleeve caps and matching underarm points.

BurdaStyle

Long Sleeve Tiered Dress 06/2012