

Asymmetric Jacket 03/2012

By: burda style magazine

<http://www.burdastyle.com/projects/asymmetric-jacket-032012>



Asymmetric jacket sewing pattern. Fitted jacket with standing collar. burda style magazine patterns FAQ

Materials

Jacquard fabric, width: 140 cm (55 ins), length: 1.50, 1.50, 1.50, 1.80, 1.80 m (1 3/4, 1 3/4, 1 3/4, 2, 2 yds).
Lining, 140 cm (55 ins) wide: 1.20 m (13/8 yds) for all sizes. Vilene/Pellon G 785. 1 separating metal zip, 45 cm (18 ins) long. 2 buttons and 1 flat inside button. 1 large sew-on snap fastener.

Step 1 — Preparations



Paper cut for ANSI A (German DIN A4) prints:

This pattern is printed on 8.5 × 11 sheets of plain paper. Do not scale or center pages before printing. Wait until all sheets are printed out before beginning to tape them together. **Do not cut out pattern pieces yet**— Arrange the sheets on a large, hard, flat surface so that they fit together, matching up like numbers and letters (i.e. 6A to 6A). To tape pattern together, fold under the margin of one piece (6A) and tape right against the line of it's matching number/letter (6A).

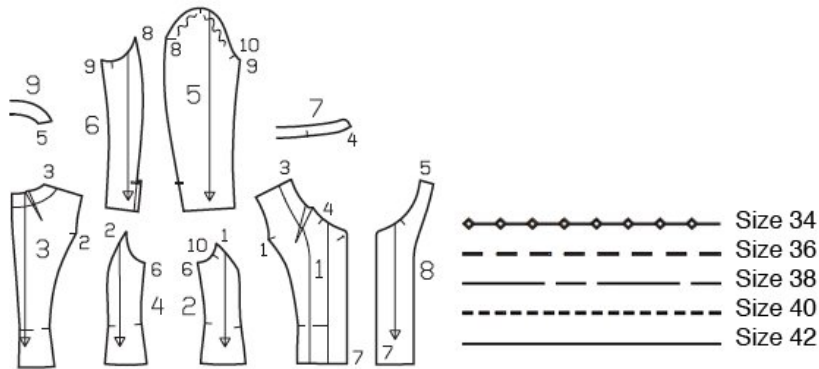
Trace the pattern pieces from the pattern sheet. Follow lines and details for style 116 (This pattern also includes pieces, lines and markings for style 115)

The buttonhole marked on piece 1 is for size 34. For the other sizes, move the buttonhole up according to the size lines.

burda style magazine pattern do not have seam allowance included.

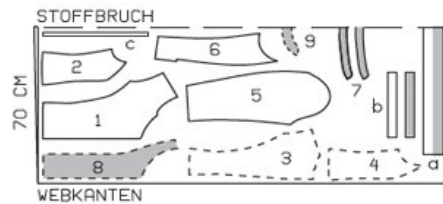
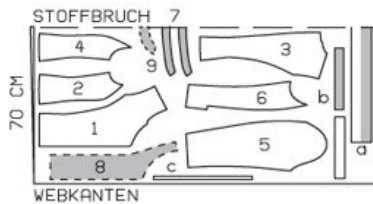
Seam and hem allowances to be added: Seams and edges 1.5 cm (5/8 in)

Step 2 — Cutting out



Main fabric, 150 cm width, size 36-40

size 42-44



Webkante = Selvage
Stoffbruch = Fabric fold

Jacquard fabric:

- 1 centre front 2x
- 2 side front 2x
- 3 centre back 2x
- 4 side back 2x
- 5 upper sleeve 2x
- 6 under sleeve 2x
- 7 standing collar,
on a fold 2x
- 8 front facing 2x
- 9 back facing,
on a fold 1x

Also draft and cut the following pieces, not included in the pattern sheet:

- a) Hem waist band, cut one rectangular piece in the following dimensions
 Size 34: 98 × 9 cm (38 3/4 × 3 1/2 ins), finished width 4.5 cm (1 3/4 ins).
 Size 36: 102 × 9 cm (40 1/4 × 3 1/2 ins), finished width 4.5 cm (1 3/4 ins).
 Size 38: 106 × 9 cm (41 3/4 × 3 1/2 ins), finished width 4.5 cm (1 3/4 ins).
 Size 40: 110 × 9 cm (43 1/2 × 3 1/2 ins), finished width 4.5 cm (1 3/4 ins).
 Size 42: 114 × 9 cm (45 × 3 1/2 ins), finished width 4.5 cm (1 3/4 ins)

b) 4 cuff pieces, with 4 cm (1 5/8 in) overlap,

Size 34: 28 × 4 cm (11 1/8 × 1 5/8 in)

Size 36: 28.5 × 4 cm (11 1/4 × 1 5/8 in)

Size 38: 29 × 4 cm (11 1/2 × 1 5/8 in)

Size 40: 29.5 × 4 cm (11 3/4 × 1 5/8 in)

Size 42: 30 × 4 cm (12 × 1 5/8 in)

c) left band for zipper: (incl.allowances).

Size 34: 43 x 2 cm (17 × 3/4 in)

Size 36: 44 × 2 cm (17 1/4 × 3/4 in)

Size 38: 45 × 2 cm (17 3/4 × 3/4 in)

Size 40: 46 × 2 cm (18 1/8 x 3/4 in)

Size 42: 47 × 2 cm (18 1/2 × 3/4 in)

Lining: piece 1 to lining line

piece 3 to lining line and with an ease pleat of approx. 2 cm (3/4 in) at centre back;

pieces 2, 4, 5, and 6.

Interfacing: Interface the outer cuff pieces.

Step 3 — Sewing



Stitch the front darts. Press the darts to the side. Stitch the centre fronts to the side fronts. Press the seam allowances to the centre. Topstitch 5 mm (3/16 in) from seams. For sizes 36 – 42, lengthen the marked pocket lines upward to a finished length of 15.5 cm (6 1/8 ins).

Stitch the centre back seam, back darts, and back section seams. Press the centre seam allowances to one side and press the section seam allowances and darts to the centre. Topstitch the centre seam and the section seams. Stitch the side seams and shoulder seams. Press seam allowances open.

Fold the waist hem band in half length wise and press, wrong side facing in. Unfold the waist hem band again. Stitch the waist hem band to the lower jacket edge. Press seam allowances onto waist hem band.

For sizes, 34-40, shorten upper end of zip: Finished length of zip measures 41 42 43 44 cm (16 1/4 16 1/2 17 17 1/4 ins). Measure and mark the required length on the zip. Use pliers to remove upper stoppers and surplus teeth from zip. Reattach stoppers and press firmly to secure. Trim zip tapes 2 cm (3/4 in) above teeth.

Turn in the top ends of zip tapes. Lay the zip face down on the right fabric side of right front edge and on the end of the hem band, as far as pressed fold. The teeth of the zip lie on the garment piece, from the seam line, and the zip tape lies on the seam allowance. Stitch the zip tape in place, along seam line on front edge.

Stitch the lower edge of the front facings to inside edge of hem band. Press the facing joining seams open. Clip seam allowance of inside edge of hem band at inside facing edges. Fold the inside half of the hem band

to outside and pin to front edges, right sides together. Then continue to pin the front facings to the jacket, catching the zip on right front edge. Stitch back facing to shoulder edges of front facings. Stitch along the front edges and neck edge, up to the marking. Leave the facing lying right sides together with the jacket for now.

Lay the collar pieces right sides together. Stitch together along front and upper edges, beginning and ending stitching in front, exactly at seam line of joining edge. Trim the seam allowances. Turn the collar right side out and press.

Lay the collar between the jacket and the facing. Stitch the outer collar piece to the neck edge of jacket and stitch the inside collar piece to the facing. Press the seam allowances open. Turn the facing to the inside. Pin the collar joining seams together. In back, turn the facing up again and stitch seam allowances together, close to collar joining seam. Fold the hem band to inside along pressed fold and pin edge to joining seam. Topstitch the hem band close to the joining seam and close to the lower edge. Topstitch close to front edges and edges of collar.

Stitch the back sleeve seams, to the slit mark. Clip the seam allowance of each upper sleeve at the top of the vent. Press the seam allowances onto the upper sleeves. Topstitch the upper sleeves close to the seams. Stitch the front sleeve seams.

Set in sleeves, easing sleeve caps. Turn the garment inside out and set in sleeves in each armhole, right sides facing each other, easing the sleeve caps. Pin the sleeve to the armhole and stitch around the armhole opening. Press the seam allowance out in to the sleeve.

Construct lining. On lining back, stitch allowances of centre seam together, 1 cm (3/8 in) from edge. To form ease pleat, stitch along centre back at top and bottom, each approx. 5 cm (2 ins) long, and baste in between. Press pleat to one side. Stitch darts and seams of lining. Set in sleeve linings same way as sleeves on jacket.

Stitch the lining to inside facing edge, right sides together, leaving approx. 8 cm (3 1/4 ins) open at the bottom. Lay the lining in the jacket, with the wrong sides facing, pulling linings into sleeves. Turn in the lower edge of the lining and sew to the hem band. Sew the remaining front lining edges to the facing.

Sew sleeve linings in place: At lower end of each sleeve vent, turn lining edge under and pin to the underlap edge of the back sleeve. Reach between the sleeve and lining to grasp the pinned edges and pull them out. Stitch the edges together, right sides facing. On upper end of underlap, stitch horizontally to the sleeve seam. Clip seam allowances into the corner. Push the edge of the underlap back in place. Turn the underlap onto the back sleeve piece and pin. Lay the other edge of the lining over the vent. At the lower end of the vent, turn lining edge under and pin to the vent edge of the front sleeve. Reach up from the lower edge, between sleeve and lining, to grasp the pinned edges and pull them out. Stitch the edges together, right sides facing. Push the front vent edge back in place again. Remove pins from underlap. Turn underlap forward. Stitch the lining of the other sleeve in same manner. Topstitch the edges of the underlap and front vent edges. On upper end of each vent, stitch horizontally, catching the underlap. Baste the lining to the lower sleeve edges, not turning raw edges under.

Cuffs: Stitch the outer cuff pieces to the lower sleeve edges, leaving the overlap extending in front. Press the seam allowances onto the cuffs. Stitch the inside cuff pieces right sides together with the outer cuff pieces, turning the seam allowance of the joining seam up again, and slightly rounding off the corners of the overlap. Trim the seam allowances. Turn the cuffs right side out. Turn in the inside edges and sew in place. Topstitch the cuffs close to all edges. Work one buttonhole in front end of each cuff.

Lay right jacket front on left front, matching centre fronts. Pin the loose zip tape to the left front. On the band for the zip, press all edges to wrong side, 5 mm (3/16 in) wide. Pin band to the left front and edgestitch all edges in place.

On upper corner of the left front, work the buttonhole for the inside button. Sew button to inside of right facing, to match buttonhole. Close the left end of hem band on the inside, with the snap fastener.

BurdaStyle

Asymmetric Jacket 03/2012