

# Jason

By: burdastyle

<http://www.burdastyle.com/projects/jason>

---



A well-dressed man never goes out of style. And what best than a vest to dress that man. Our Jason Vest works well over button downs, casually over a T-Shirt or underneath a suit jacket. The vest is slim cut and can further be adjusted with the fastener on the back. The V-neck Front closes with five buttons and has two

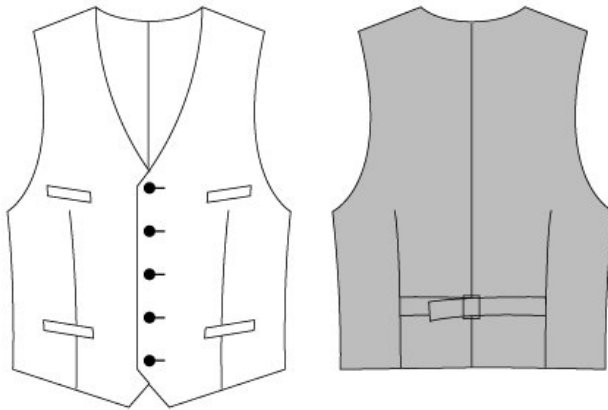
pockets on either side.

## Materials

Silk, Linen, Lining, Five Buttons

---

### Step 1 — CUTTING TICKET



- A B 1 Front piece 2x
- A B 2 Back piece A 2x, B 4x Lining
- A B 3 Front placket 2x
- A B 4 Strap I 1x
- A B 5 Strap II 1x
- A B 6 Piping 2x
- A B 7 Pocket pouch 2x
- A B 8 Pocket pouch / Lining 2x
- A B 9 Piping 2x
- A B 10 Pocket pouch 2x
- A B 11 Pocket pouch / Lining 2x
- A B 12 Front piece / Lining 2x

Fabrics: Light wool fabric,  
B Lining back piece / lining fabric: Satin, taffeta

The patterns can be printed out at the copy shop. If you decide to print them at home, follow the instructions:  
Paper cut for ANSI A (German DIN A4) prints:

The patterns are printed out on 24 sheets, with a thin frame. Wait until all sheets are printed out. Arrange the sheets so that they fit together (see additional page with the overview of the prints). Fold the single sheets on the upper and right edge along the thin frame lines. Begin with the left lower sheet and then tape the frame lines together precisely.

---

## Step 2 — ADJUST PATTERN



### ADJUST PATTERN SIZES

Select your size according to the Burda-dimension table: dresses, blouses, jackets and coats according to the bust size, trousers and skirts according to the hip width. Change the pattern to fit your measurements if they deviate from the Burda-size chart. Cut out the pattern pieces 1 to 12 for the vest according to your size.

Sizes 40 to 50 (EU 50 to 60): Mark the lines for the top pocket in the same way as for sizes 34 to 38 (EU 44 to 48).

Sizes 36 to 50 (EU 46 to 60): When marking the lines for the bottom pocket, close the dart. Mark the pocket lines in front of the dart in the same way as for size 34 (EU 44). Connect those lines.

Refer to our [Adjust patterns for mixed sizes](#) technique.

### LENGTHENING OR SHORTENING THE PATTERN PIECES

Our pattern is calculated for a height of 5â€— 6â€— (168 cm). If you are taller or shorter, you can adjust the pattern pieces along the lines marked “lengthen or shorten here”. This way the proper fit is maintained.

Always adjust all pattern pieces along the same line to the same degree.

How to lengthen and shorten pattern pieces:

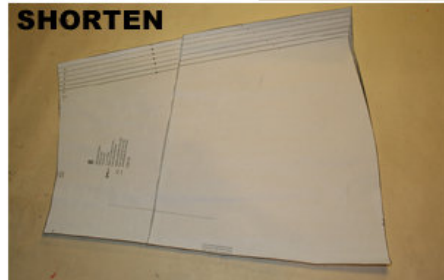
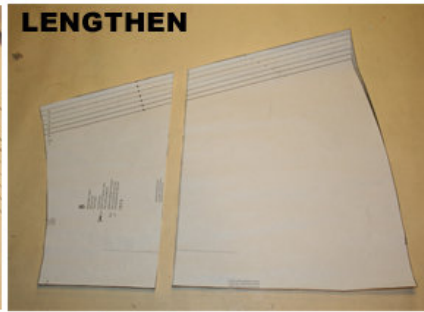
Cut the pattern pieces along the marked lines

To lengthen, slide the two halves of the pattern piece as far apart as necessary.

To shorten, overlap the two halves of the pattern piece as far as necessary. Blend the side edges.

---

## Step 3 — CUTTING OUT



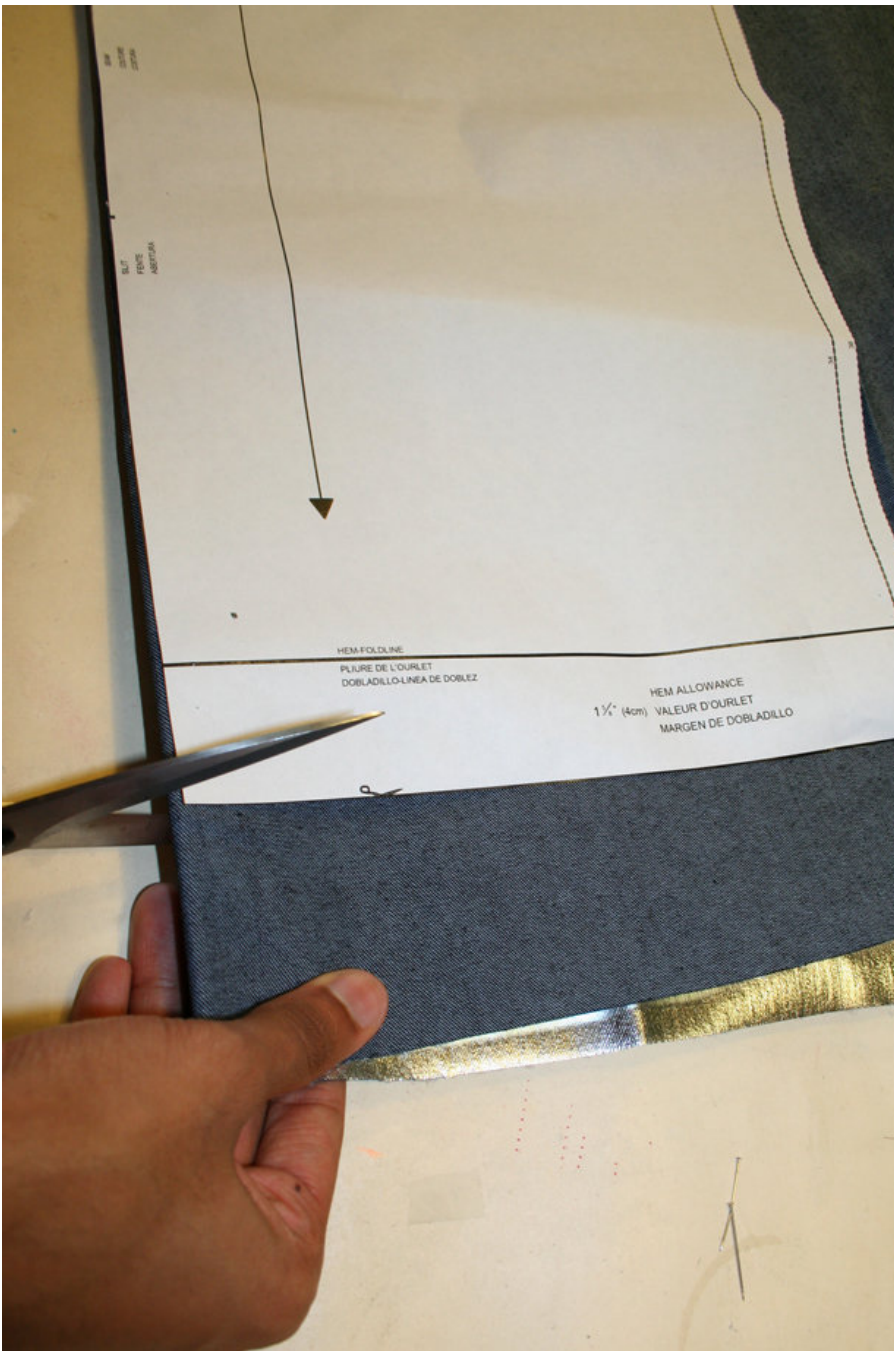
FOLD (— — — — ) means: Cut on the fold, the fold being the center of the pattern piece, but never a cut edge or seam. The piece should be cut double, with the fold line forming the center line. Pattern pieces that are outlined with a broken line in the cutting diagrams are to be placed face down on the fabric. The cutting diagrams on the pattern sheet show how the pattern pieces should be placed on the fabric.

The cutting diagrams show the placement of the pattern on the fabric.

For a single layer of fabric, the pattern pieces are pinned to the right side. For double layers of fabric, the right sides are facing and the pattern pieces are pinned to the wrong side. The pattern pieces that are shown extending over the fold of the fabric in the cutting diagram should be cut last from a single layer of fabric.

---

## Step 4 — SEAM AND HEMLINE ALLOWANCES AND INTERFACING



**SEAM AND HEMLINE ALLOWANCES** are included on an average:  
 1 5/8" – 8" (4 cm) for hem, 5/8" – (1.5 cm) for all edges and stitches. Using BURDA copying paper, transfer the lines and signs of the pattern onto the wrong side of the fabric. Instructions can be found in the packaging.

#### LINING

Cut lining for A according to pieces 2, 8, 11 and 12.  
 Cut lining for B according to pieces 2, 4, 5, 8, 11 and 12.

For vest B with lining back: Cut piece 2 4x from lining.  
 = See cutting diagram.

## INTERFACING

Cut out the interfacing pieces and press onto the wrong side of the fabric.

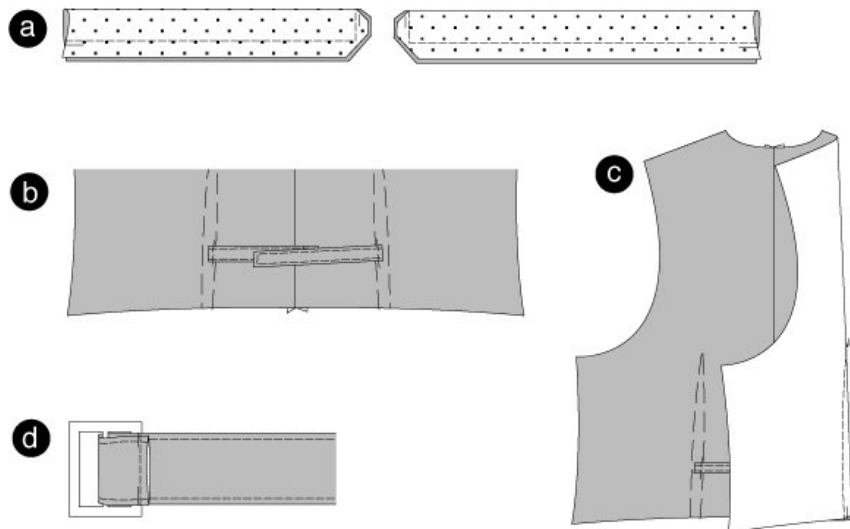
### Sewing

While sewing, the right sides of the fabric are facing.

Transfer all lines of the pattern onto the right side of the fabric using chalk.

---

## Step 5 — DARTS, POCKETS AND PIPING



### AB VEST

#### Center back seam

Position the back pieces together, right sides facing. Stitch the center seam. Press allowances apart.

#### STRAP I and II

1 Fold the strap along the FOLD LINE, right sides facing. Stitch edges together according to the image. Trim allowances and cut the corners at a slant. Turn the strap. Pin the edges, press and stitch narrowly. (a)

Pin the strap on the dart lines at the back piece, the raw strap edges meet the center of the dart.(b)

Pin DARTS and stitch to a point, enclosing the strap ©. Secure seam ends. Press the darts towards the sides. Wrap strap I (center back) around the bar of the buckle, pin. Stitch (d)

#### FRONT DARTS

Pin the darts on the front pieces and stitch to a point. Secure seam ends. Press darts to the center front.

#### POCKETS WITH PIPING

Bottom pockets: Pieces 6, 7 and 8.

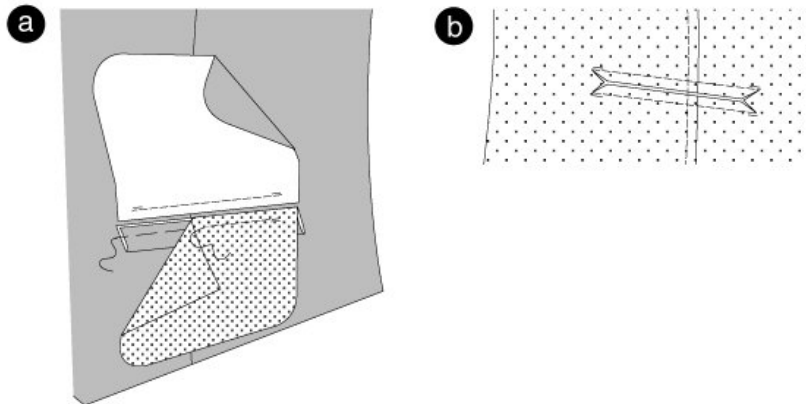
Top pockets: Pieces 9, 10 and 11

The image shows the bottom pocket. Apply the top pockets in the same way.

Fold the PIPING along the fold line, wrong sides facing. Pin raw edges together.

---

## Step 6 — PIPING ON POCKETS



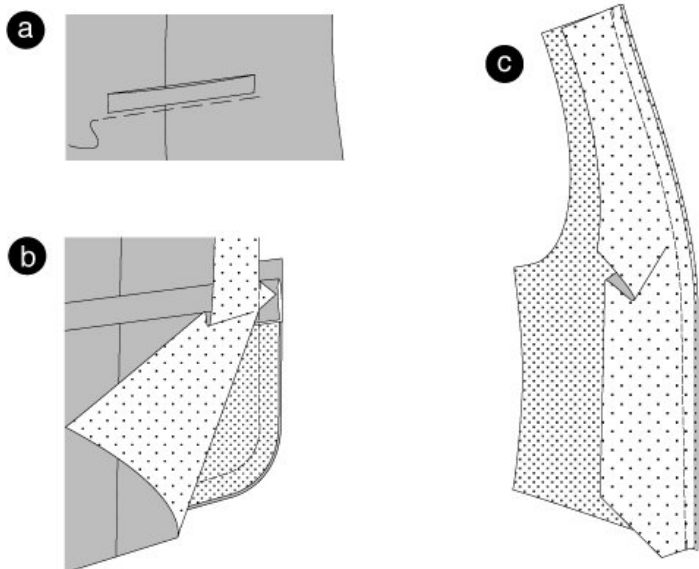
Pin the piping with its raw edges on the seam line of the front piece. Position the lining pocket pouch on the piping, right sides facing. Pin. Position the fabric pocket pouch on the pocket pouch seam line, right sides facing. Stitch piping and pocket pouch along the marked seam lines. Secure seam ends. (a)

Snip in the front piece between the stitch lines, along the marked cut line. Also, snip in diagonally from the cut line close to the seam line. In that way you create small triangles. Do NOT snip in pocket pouch and piping. (b)

Turn pocket pouch and piping over the seam line. Press. Pull the pocket pouch inside through the opening. Pin the pocket opening. ©

---

## Step 7 — LINING AND SIDE SEAMS



Fold the ends of the small triangles inwards; then stitch the strap on the piping and the fabric pocket pouch. Position the pocket pouch pieces together, trim the edges and stitch onto the lining side of the pocket. (a)

#### SIDE SEAMS

Position the front and back piece (for B lining) together, right sides facing. Stitch side seams (seam number 1). Press allowances apart.

#### LINING

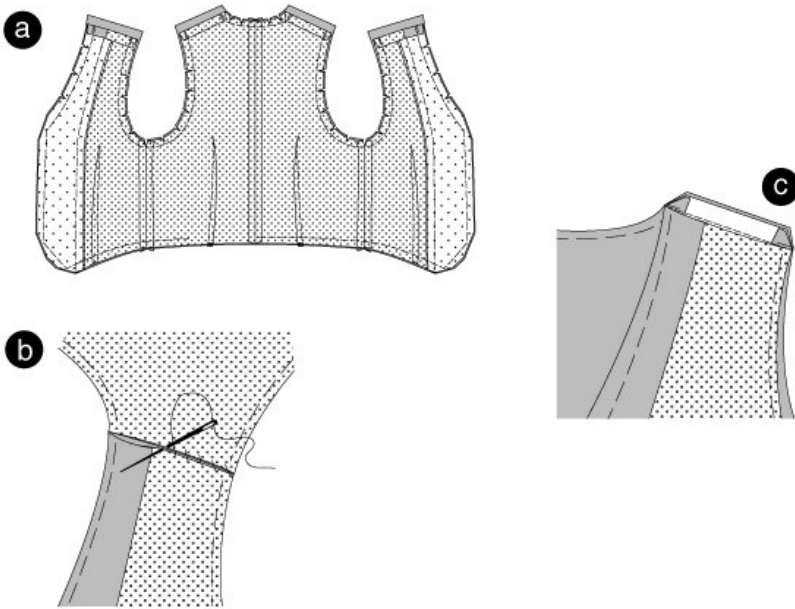
Stitch DARTS of front and back piece. Then press the darts towards the front and back center. Stitch CENTER BACK SEAM. Press allowances apart.

Position front plackets and lining front pieces (seam number 2) together, right sides facing. Stitch. Trim allowances and press inside the lining. (b)

Stitch SIDE SEAMS (seam number 1). Press allowances apart.

Fold the allowances of the shoulder seams of front piece and lining back piece inside. Press.

## Step 8 — SHOULDER SEAMS



#### DOUBLE THE VEST WITH LINING

8 Position the lined plackets on the vest (seam number 3), right sides facing. The side seams meet. Stitch all edges, except the shoulder edges. Leave an opening at the back hemline so that the vest can be turned later on. Trim allowances, snip in the curves and cut the corners at a slant. Turn vest and pin the opening. (a)

#### SHOULDER SEAMS

9 Position front and back piece together, right sides facing. Stitch shoulder seams (seam number 4), at the same time ease the back shoulder edges and do not enclose the lining. Cut the allowance corners at a slant. Push the allowances inside and press apart. (b)

10 Sew the shoulder edges together by hand. Pin the vest edges, press and stitch, including the opening at the back hemline. ©

Work **BUTTON HOLES** into the left front piece. The space between the center front and the button hole should be 2mm. Sew **BUTTONS** onto the center front of the right front piece.

---

**BurdaStyle**

Jason