

Draped Dress 04/2012

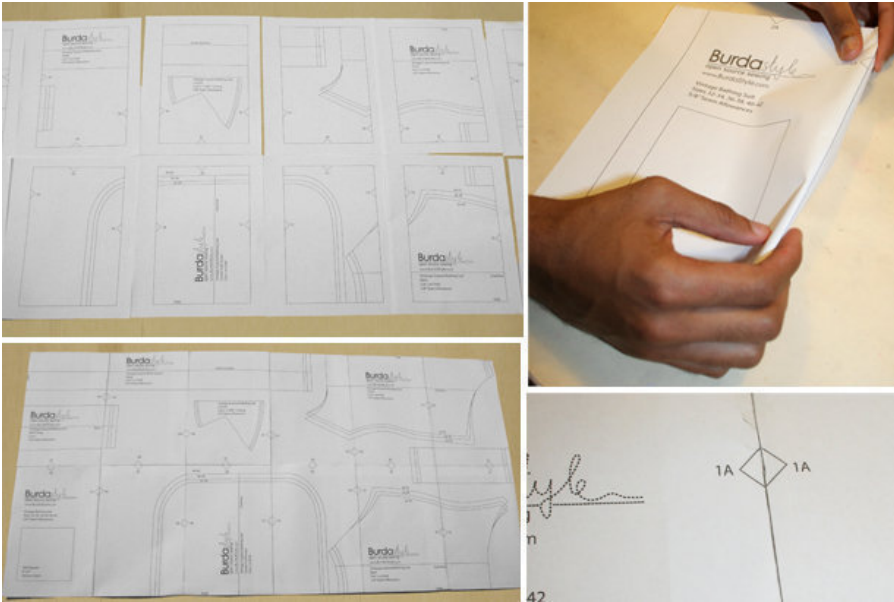
By: burda style magazine

<http://www.burdastyle.com/projects/draped-dress-042012>



This is an ultra chic dress with a crossover style in the front and back. Adding interesting fullness to the bodice, one shoulder is gathered and the other is pleated. This dress cinches nicely at the waist with an elasticated casing, making it comfy to wear to any occasion. You could add sleeves, or drop the hemline to floor to make a maxi dress.

Step 1 — Preparations



This pattern is printed on 8.5 × 11 sheets of plain paper. Do not scale or center pages before printing. Wait until all sheets are printed out before beginning to tape them together. **Do not cut out pattern pieces yet**— Arrange the sheets on a large, hard, flat surface so that they fit together, matching up like numbers and letters (i.e. 6A to 6A). To tape pattern together, fold under the margin of one piece (6A) and tape right against the line of it's matching number/letter (6A).

Trace the pattern pieces from the pattern sheet following the lines and markings for the correct size and the correct style (112). (This pattern also includes pattern pieces, lines and markings for style 111 that should be ignored.)

The pleat arrows on pieces 21 and 23 are marked for size 36. For the other sizes, mark the pleat arrows accordingly. Stitching lines for the elastic casing on pieces 21 and 23 are marked for size 36. For sizes 38-44, remark the stitching lines to the same width.

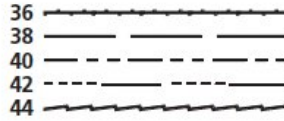
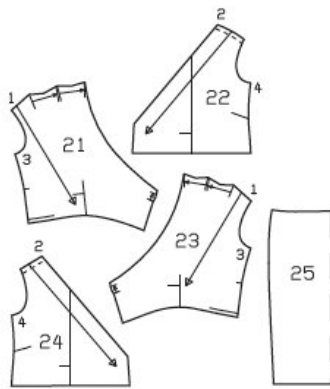
burda style magazine pattern do not have seam allowance included.

Seam and hem allowances to be added:

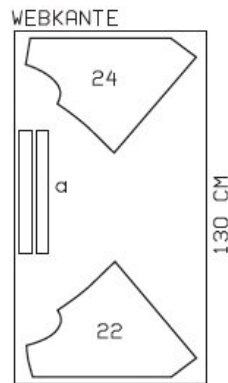
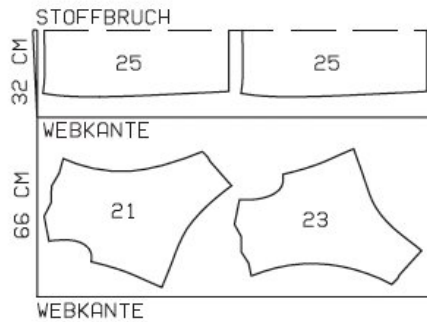
Seams and edges 1.5 cm (5/8 in), for skirt joining seam (casing) 2 cm (3/4 in), no allowance at hem edges.

Step 2 — Cutting Out

Pattern Pieces 21 - 25



Cut piece 25 on a double layer of fabric and pieces 21 - 24 on a single layer of fabric.
Use fabric with a width of 130cm



Stoffbruch = fabric fold
Webkante = selvage

Jersey:

- 21 right front 1x
- 22 left front 1x
- 23 right back 1x
- 24 left back 1x
- 25 skirt panel, on a fold 2x

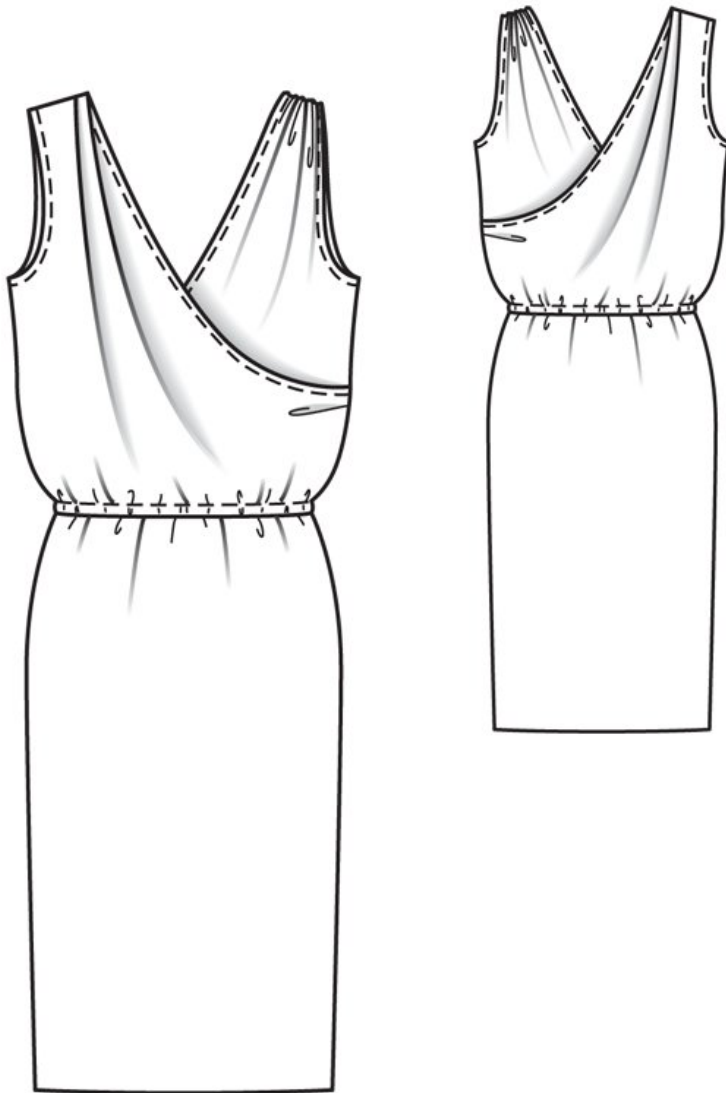
Draft the following pattern pieces not included in the pattern:

- a) 2 facing strips for armhole edges,
length: 46 47 49 50 52 cm (18 1/8 18 1/2 19 1/4 19 3/4 20 1/2 ins)
width: 3 cm (1 1/4 ins) wide including allowances

Lining: piece 25, at lower edge 3 cm (1 1/4 ins) shorter than paper pattern piece.

Vilene Bias Tape/stay tape: Iron to wrong side of armhole edges.

Step 3 — Sewing



Fold pleats in right front and back (shoulder and side edge) in direction of arrows as indicated on pattern and baste down in place.

Gather shoulder edge of left front and back to:
5 5 5.5 5.5 6 cm (2 2 2 1/4 2 1/4 2 3/8 ins) long.

Cut a backing strip, 3 cm (1 1/4 ins) wide, from a scrap of fabric and baste to wrong side of left back shoulder edge. Stitch shoulder seams, right sides together and press seam allowances onto back.

Armholes: Fold facing strips for armholes in half lengthwise, right side facing out, and press. Stitch each folded strip to armhole edge so that fold edge of strip lies on garment piece, 7 mm (1/4 in) wide. Trim seam allowances and turn strips to inside. Topstitch 5 mm (3/16 in) from armhole edges.

Press seam allowance on neck edge to inside, then turn raw edge under, and stitch down.

Lay right front and right back on corresponding left piece, wrong side facing right side, with neck edge at abutting line. Baste side and lower edges together.

Stitch side seams, right sides together and press open. Sew top ends of allowances in place by hand using a slip stitch.

Stitch side seams of skirt and skirt lining, right sides together. Pull lining into skirt, right side facing wrong side, and baste to upper edge. Stitch skirt to bodice along waistline. Neaten allowances together.

Press allowances up and stitch as marked, to form casing, leaving an opening, approx. 3 cm (1 1/4 ins) long, for elastic. Pull elastic into casing. Sew ends together to a circumference of:
66 70 74 78 82 cm (26 27 3/4 29 1/4 30 3/4 32 1/2 ins). Sew seam opening closed.

BurdaStyle

Draped Dress 04/2012