

07/2011 Off the Shoulder Dress (plus-size)

By: burda style magazine

<http://www.burdastyle.com/projects/072011-off-the-shoulder-dress->



Dress with V collar burda style magazine patterns [FAQ](#)

Materials

Crpe satin with crosswise stretch

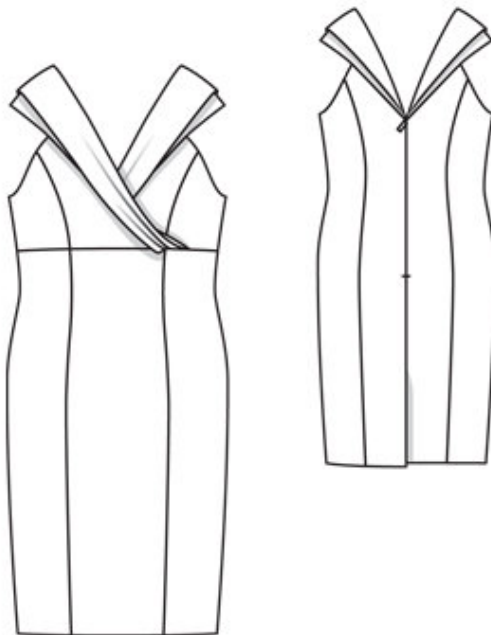
Step 1 — Preparation

Trace the pattern pieces from the pattern sheet. Lengthen pieces 3 and 4 as indicated. Note different lines for right and left edge of vent but cut the right and left pieces the same size initially from the double layer of fabric.

Seam and hem allowances:

Seams and edges 1.5 cm (5/8 in), centre back seam 2 cm (3/4 in) (tapered toward allowance of vent at the bottom), hem 4 cm (15/8 ins). Cut lining pieces with 1.5 cm (5/8 in) wide seam and hem allowances.

Step 2 — Cutting out



Crpe satin:

1upper centre front 2x

2— and as lining 2x

3upper side front 2x

4— and as lining 2x

5lower centre front, on a fold 1x

6lower side front 2x

7centre back 2x

6side back 2x

7collar, on a fold 2x

Lining: piece 5 without allowance at vent and pieces 3, 4 and 6.

Interfacing (G 785) See pattern layout. Iron Vilene Bias Tape/stay tape to wrong side of armhole and neck edges of outer upper front and back pieces.

Step 3 — Vertical section seams

Stitch the vertical section seams on upper and lower front and back pieces, and also on corresponding lining pieces. Press seam allowances open.

Step 4 — Collar

Fold each collar piece on fabric fold line, right side facing in. Stitch lengthwise edges together between markings. Clip seam allowances at markings. Turn collar pieces right side out. Press seamed edges but do not press fold edge. Baste remaining edges of collar together. Baste front ends of collar to neck edge of (outer) upper front pieces, from seam number 5 and baste back ends to neck edges of centre back pieces, from seam number 4, easing collar edges and matching clips to marked armhole lines. Stitch upper front lining pieces and back lining pieces right sides together with neck edges, catching collar pieces. Stitch lining right sides together with armhole edges, not catching collar pieces. Trim seam allowances, trimming corners diagonally. Turn lining up and stitch to seam allowances, close to seam, as far as possible. Turn lining to inside and press edges. Baste lining to upper fronts along lower and side edges. In front, turn each collar down onto upper front pieces (right side of fabric). Fold pleats in collar in direction of arrows and baste — pleats point toward neck edge. On the first pleat next to neck edge, turn front edge of collar toward lower front edge and baste to lower edge, up to marking. Lay upper right front on upper left front, matching centres (wrong side facing right side). Baste lower edges together.

Step 5 — Front

Stitch upper front to lower front. Press seam allowances down.

Step 6 — Zip

Sew invisible zip to back opening edges of dress,, but do not catch lining. Stitch centre back seam from vent to zip opening. Press seam allowances open and press left facing to inside. Lay right underlap toward left back and press allowance of right back under, above vent, tapering as you go to avoid the need to clip allowances.

Step 7 — Armholes

On back pieces, turn lining up at armholes. Stitch side seams. Press seam allowances open.

Step 8 — Lining

Stitch upper edge of lower front lining piece to seam allowances of front horizontal seam — lining lies over upper front pieces. Stitch as far as possible toward the sides. Turn lining down. Stitch side seams of lining, from lower edges, as far as possible. Sew remaining open edges of lining to side seams and to horizontal seam by hand. Turn in lining and sew to zip tapes.

Step 9 — Vent

Trim left vent facing to a width of 6 cm (23/8 ins). At hem, unfold back facings. Press hem allowance to inside and sew in place by hand. Turn facings to inside again and sew to hem allowance. Pin lining around the vent. Trim lining to 2 cm (3/4 in) from inside edges of vent facings, trim away across top of vent, and clip diagonally into top corners, approx. 1 cm (3/8 in). Turn in edges of lining and sew to vent facings.

BurdaStyle

07/2011 Off the Shoulder Dress (plus-size)