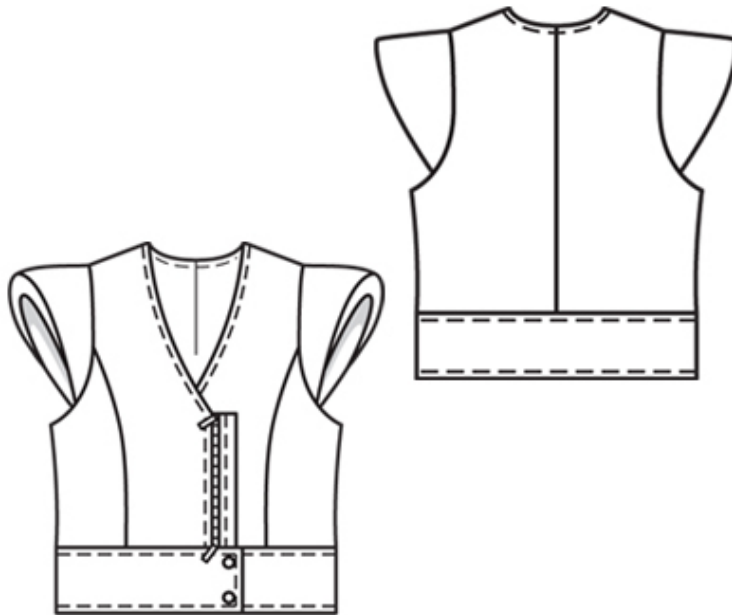


4/2010 Leather Vest with Cap Sleeves

By: burda style magazine

<http://www.burdastyle.com/projects/42010-leather-vest-with-cap-sleeves>



Leather Vest with Cap Sleeves burda style magazine patterns FAQ

Materials

Lamb nappa leather

Step 1 — Note on working with leather

We recommend you first make the vest from inexpensive cotton. Then transfer any required alterations to the pattern pieces before cutting out the leather. Avoid basting or unpicking seams on leather since the holes left by the needle may be permanent. Press leather from the wrong side with moderate heat and without steam (cover with a pressing cloth). Test-iron a scrap of leather first.

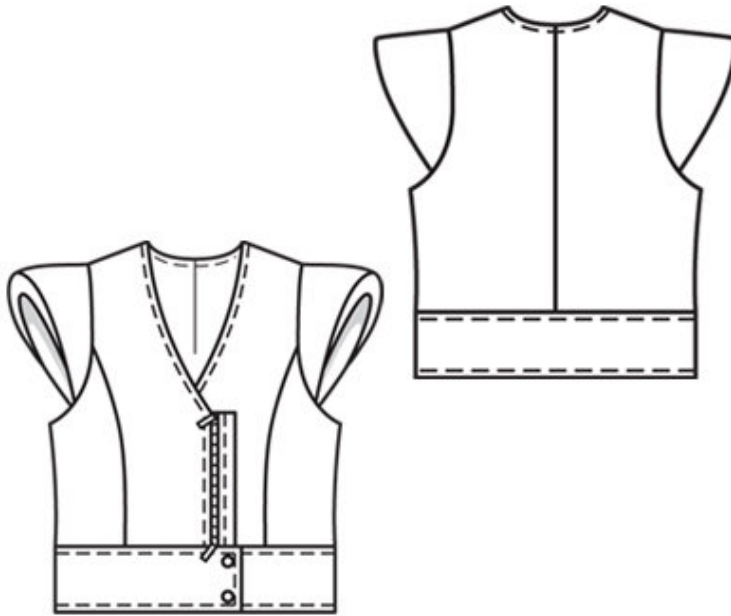
Step 2 — Preparation

Trace the pattern pieces from the pattern sheet. Trace the front facing from piece 21 as a separate pattern piece.

Seam and hem allowances:

Seams and edges 1.5 cm (5/8 in), -leather band for zip 7 mm (1/4 in).

Step 3 — Cutting Out



Lamb nappa leather:

21 centre front 2x

22 front facing 2x

23 side front 2x

24 back 2x

25 outer sleeve piece 2x

26 inner sleeve piece 2x

27 connecting piece 2x

2 right front waistband pieces with 3.5 cm (1 1/2 in) overlap, 26 1/4 — 27 1/4 — 28 1/4 — 29 1/4 — 30 cm (10 1/4 — 10 3/4 — 11 1/8 — 11 1/2 — 12 ins) long, 10 cm (4 ins) wide,

2 left front waistband pieces, 22.5 1/4 — 23.5 1/4 — 24.5 1/4 — 25.5 1/4 — 26.5 cm (9 1/4 — 9 3/4 — 10 — 10 1/2 ins) long, 10 cm (4 ins) wide,

2 back waistband pieces, 42.5 1/4 — 44.5 1/4 — 46.5 1/4 — 48.5 1/4 — 50.5 cm (16 3/4 — 17 1/2 — 18 1/4 — 19 1/8 — 20 ins) long, 10 cm (4 ins) wide,

Left leather band for zip, 17.5 — 18 — 18.5 — 19 — 19.5 cm (7 — 7 1/8 — 7 1/4 — 7 1/2 — 7 3/4 ins) long, 1.5 cm (5/8 in) -wide.

Lining: piece 21 minus width of -facing and pieces 22 and 23.

Interfacing: Iron onto facing pieces and outer waistband pieces.

Step 4 — Centre back seam and front section seams, shoulder seams

Stitch centre back seam and front section seams. Press seam allowances open. Topstitch close to each side of seams. Stitch shoulder seams. Spread seam allowances open and glue down (textile adhesive).

Step 5 — Sleeves

Stitch connecting pieces to -outer sleeve pieces, from marking to marking (seam number 5), and to inner sleeve pieces (seam number 6). Stitch outer and inner sleeve pieces together from each corner to connecting piece, turning seam allowance of connecting pieces back at the end. Spread seam allowances open. Lay allowances of connecting pieces onto -sleeve pieces. Topstitch close to each side of seams, from corner to connecting piece, then topstitch close to joining seams of connecting pieces. Stitch outer sleeve pieces to fronts and to back between markings (seam numbers 7 and 8). Clip seam allowances of armholes at markings. Spread seam allowances of sleeve inset seams open and glue down with glue stick. Lay inner sleeve pieces to inside. Lay shoulder pad between sleeve pieces. Lay inside edge of inner sleeve pieces flat over sleeve inset seam and shoulder pad. Topstitch outer sleeve pieces close to inset seam.

Step 6 — Zip tapes

Turn in top ends of separating zip tapes. Pin zip face down to right front edge (right side of leather) so that teeth of zip lie on garment piece and the zip tape lies on the seam allowance. Stitch zip tape in place.

Step 7 — Lining with facing

Stitch section seams on front lining pieces. Stitch front facings to front lining pieces. Press seam allowances onto lining. Stitch centre back seam of lining. Stitch shoulder seams.

Step 8 — Stitch facings and lining to waistcoat

Lay facings and lining right sides together with waistcoat. Stitch along front and neck edges, catching zip at right front edge. Trim seam allowances, trimming corners diagonally. Turn facings and lining to inside.

Step 9 — Armholes

Now first turn in armhole edges at one side seam and hold together with a single straight pin. Reach between waistcoat and lining to pull out armhole edges. Remove the pin but keep hold of the edges. Work from the side seam edge to stitch lining to armhole edge, right sides facing, then stitch lining to seam allowance of inner sleeve piece, close to stitching, as far as shoulder seam. Trim seam allowances at armhole. Push seam in again. Then work from other side seam edge to stitch lining as far as shoulder seam, see instructions above. Push seam in again. Face second armhole with lining in same manner.

Step 10 — Side seams of waistcoat and lining

Stitch side seams of waistcoat and lining as continuous seams. Spread leather seam allowances open and glue down. Press seam allowances of lining open. Lay lining to inside again and stitch to seam allowance of lower edge. Topstitch close to armhole edges. Topstitch 7 mm (1/4 in) from front and neck edges.

Step 11 — Zipper

Open zip. Lay left half of zip face down on front edge (right side of leather) of leather band for zip so that teeth of zip lie on band and edge of zip tape lies even with seam allowance on front edge of leather band. Stitch zip tape to front edge of leather band for zip, 7 mm (1/4 in) from edge. Lay teeth of zip forward and lay seam allowance and zip tape onto leather band. Lay allowances on upper and side edges of leather band to inside and glue in place with glue stick. Close zip. Lay right front on left front, matching centres. Use glue stick to glue leather band for zip in place on left front. Open zip. Edgestitch side and upper edges of leather band for zip in place. Stitch 5 mm (3/16 in) from front edge of leather band.

Step 12 — Waistband

Stitch side seams on waistband pieces. Spread seam allowances open and glue down. Stitch interfaced outer waistband to lower edge of waistcoat, leaving waistband overlap extending on the right edge. Press seam allowances onto waistband. Lay inner waistband right sides together with outer waistband. Stitch together along front and lower edges. Also stitch upper edges together on overlap, laying allowances of waistband joining seam up again to do so. Trim seam allowances, trimming corners diagonally. Turn waistband right side out. Lay inside edge of waistband flat over joining seam without turning in. Stitch from right side along line of joining seam. Topstitch waistband 7 mm (1/4 in) from all edges. Carefully trim allowance on inside, close to stitching.

BurdaStyle

4/2010 Leather Vest with Cap Sleeves