

# 12/2011 Satin top with back bow

By: burda style magazine

<http://www.burdastyle.com/projects/122011-satin-top-with-back-bo>

---



Satin top with back bow burda style magazine patterns FAQ

## Materials

Crpe satin

---

### Step 1 — Preparation



Paper cut for ANSI A (German DIN A4) prints:

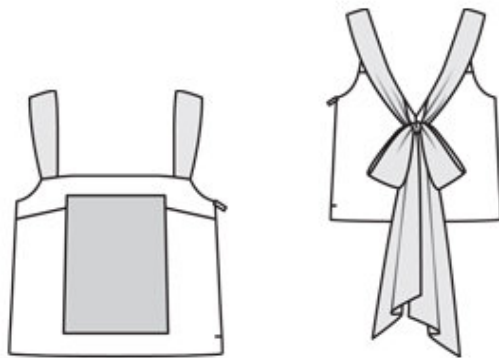
This pattern is printed on 8.5 × 11 sheets of plain paper. Do not scale or center pages before printing. Wait until all sheets are printed out before beginning to tape them together. **Do not cut out pattern pieces yet**— Arrange the sheets on a large, hard, flat surface so that they fit together, matching up like numbers and letters (i.e. 6A to 6A). To tape pattern together, fold under the margin of one piece (6A) and tape right against the line of it's matching number/letter (6A).

**burda style magazine pattern do not have seam allowance included.**

Seam and hem allowances to be added: Seams and edges 1.5 cm (5/8 in).

---

### Step 2 — Cutting out



Gold fabric:

1 front, on a fold 1x

1 front facing, on a fold 1x

3 back 2x

1 back facing 2x

4 front strap piece 4x

5 back strap piece 4x

Blue fabric:

2 front panel, on a fold 1x

Crpe chiffon:

6 scarf, on a fold 2x

Interfacing: See pattern layout. Iron shaped strips of interfacing, 3 cm (1 1/4 ins) wide, to wrong sides of facing pieces.

---

### Step 3 — Bust darts

Stitch bust darts on top and on facing. Press bust darts down. Stitch centre back seam on back, beginning exactly at marked upper seam line. Stitch centre back seam of facing in same manner.

---

### Step 4 — Front panel

Pin front panel to front, at abutting line, with right side facing wrong side. Sew panel edges in place, with running stitches, by hand.

---

## Step 5 — Shoulder seams

Stitch shoulder seams on strap units. Stitch interfaced back strap pieces to back. Stitch back strap pieces without interfacing to facing. Press seam allowances down.

---

## Step 6 — Front armhole edges, upper front edge

Pin front facing right sides together with front. Stitch along armhole edges and upper front edge, leaving an opening for straps between corners of armhole and seam marks. Trim seam allowances. Turn facing to inside. Press edges.

---

## Step 7 — Scarf pieces

Fold scarf pieces lengthwise, right side facing in. Stitch along slanted ends and long edges, up to seam mark (seam number 4). Beginning at seam mark, taper stitching to edge of seam allowance. Turn scarf pieces right side out. Baste open edges of scarf together to back neck edge, from seam mark (seam number 4), then baste to long edge of strap, up to seam number 3.

---

## Step 8 — Back neck edge, straps and back armhole edges

Pin back facing right sides together with back and pin strap pieces together, catching the scarf pieces. Stitch along back neck edge then along strap edge, up to seam number 3, as a continuous seam. Turn under scarf pieces, from fold edge, and baste to interfaced strap pieces so they are not caught in the seam when facing the strap edges. Stitch back facing to back armhole edges, then stitch strap edges together. Trim seam allowances. Turn straps right side out by pulling front ends of straps through to back, through the tunnel. Turn facing to inside. Remove basting on scarf pieces. Lay scarf pieces on straps and baste to front ends of straps.

---

## Step 9 — Zip

At armhole edges, turn facings up again. Stitch right side seam as continuous seam. Sew invisible zip to left opening edges. Stitch left side seam from lower edge to zip. Trim bottom end of zip, approx. 2 cm (3/4 in) below opening, and bind end with a scrap of fabric.

---

## Step 10 — Straps

Slide front ends of straps into openings in seams and pin in place. Try on the top to determine correct strap length. Then stitch seam closed, turning facing to outside again to do so. Turn facing to inside again, turn edge under, and sew to zip tapes. Sew inside facing edge to seam allowance of right side seam.

---

## Step 11 — Hem

Press hem allowance to inside and sew in place by hand.

---

12/2011 Satin top with back bow