

3/2011 Blouson Jacket

By: burda style magazine

<http://www.burdastyle.com/projects/32011-blouson-jacket>



Blouson Jacket burda style magazine patterns FAQ

Materials

Wool Faille

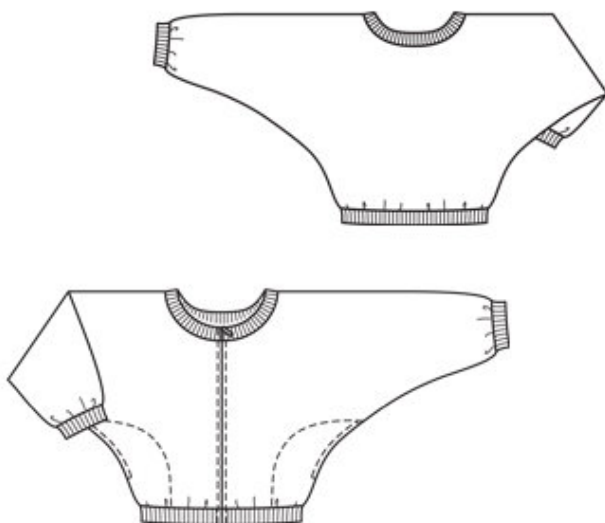
Step 1 — Preparation

Trace the pattern pieces from the pattern sheet. Trace pocket piece from piece 21 as a separate pattern piece — it is the same for all sizes.

Seam and hem allowances:

Seams and edges 1.5 cm (5/8 in).

Step 2 — Cutting Out



Wool faille:

21 front with integrated sleeve 2x

— — pocket piece 2x

22 back with integrated sleeve,

— on a fold 1x

a) 2 facing strips for zip, 47 — 48.5 — 49.5 cm (18 1/2 — 19 1/8 — 19 1/2 ins) long, 5.5 cm (2 1/4 ins) wide (incl. allowances).

Rib knit band:

b) 2 front waistband pieces, 18 — 20 — 22 cm (7 — 8 — 8 3/4 ins) long, 1 back waist-band piece, 36 — 40 — 44 cm (14 1/4 — 15 3/4 — 17 1/4 ins) long, each 6 cm (2 1/2 ins) wide, finished width 3 cm (1 1/4 ins),

c) 2 sleeve bands, 25 — 26.5 — 28 cm (10 — 10 1/2 — 11 1/8 ins) long, 6 cm (2 1/2 ins) wide, finished width 3 cm (1 1/4 ins),

d) neck band, 58 — 60 — 62 cm (23 — 23 3/4 — 24 1/2 ins) long, 6 cm (2 1/2 ins) wide, finished

width 3 cm (1¼ ins).

Step 3 — Stitch shoulder and upper sleeve seams as continuous seams

Stitch shoulder and upper sleeve seams as continuous seams. Stitch side seams and lower sleeve seams as continuous seams. Do not stitch across pocket openings in side seams. Press seam allowances open.

Step 4 — In-seam pockets

On pocket opening edge of each front, turn under allowance to a width of 7 mm (¼ in) and stitch in place. Pin pocket pieces to seam allowances of back. Stitch pocket pieces in place — along seam line at pocket opening and close to side seam below opening. Press -pocket pieces forward and baste to wrong side of fronts. To stitch pocket pieces in place, pin paper pattern -piece to front, then stitch along edge of pattern piece, catching pocket piece. At ends of pocket openings, take a few stitches horizontally.

Step 5 — Hem Band

Stitch side seams of hem band. Fold hem band in half lengthwise, wrong side facing in. Stitch edges of hem band together to lower edge of front and back, stretching hem band to fit and matching side seams. Press seam allowances up.

Step 6 — Neck Band

Fold neck band in half and stitch to neck edge, stretched to fit. Press seam allowances down.

Step 7 — Shorten zip at upper end for sizes 38/40 and 42/44

Measure length of front edge, from upper edge of neck band to lower edge of hem band, and mark on zip tape. Use pliers to remove top stoppers and excess zip teeth, to marking. Attach stoppers again and press firmly to secure. Trim away zip tapes 2 cm (¾ in) above teeth.

Step 8 — Separate zip halves

Separate zip halves. Lay halves of zip face down on seam allowances on front edges of neck band, fronts, and hem band — zip teeth meet marked front edge. Stitch zip tapes to seam allowances. Press ends of facing strips to inside, 1 cm (⅜ in) wide. Press one lengthwise edge of each to inside, 2 cm (¾ in) wide. Pin facing strips right sides together with seam allowances of front edges, over zip tapes, so that pressed edge lies on front and opposite edge lies even with seam allowance. Stitch facing strip in place, close to zip teeth. Fold facing forward over joining seam and press. On front edges, turn allowances with zip to inside and baste. Topstitch 1 cm (⅜ in) from front edges. Also stitch inside edge of facings to neck band and hem band.

Step 9 — Sleeve bands

Stitch ends of each sleeve band together. Fold bands in half and stitch to lower edges of sleeves, stretched to fit. Press seam allowances up.

BurdaStyle

3/2011 Blouson Jacket