

## 02/2012 Boat neck satin top

By: burda style magazine

<http://www.burdastyle.com/projects/022012-boat-neck-satin-top>

---



Boat neck satin top. Same pattern as 107B burda style magazine patterns FAQ

### Materials

Crpe satin with widthwise stretch, Use only fabrics with two good sides, one shiny side and one matte side.  
Fabric width: 140 cm (55 in) Fabric length: Size 36, 38 & 40: 1.35m (1 5/8 yds.) Size 42 & 44: 1.40m (55 in.) Vilene bias tape/stay tape

---

## Step 1 — Preparation



Paper cut for ANSI A (German DIN A4) prints:

This pattern is printed on 8.5 × 11 sheets of plain paper. Do not scale or center pages before printing. Wait until all sheets are printed out before beginning to tape them together. **Do not cut out pattern pieces yet**— Arrange the sheets on a large, hard, flat surface so that they fit together, matching up like numbers and letters (i.e. 6A to 6A). To tape pattern together, fold under the margin of one piece (6A) and tape right against the line of it's matching number/letter (6A).

Trace the pattern pieces from the pattern sheet following the lines and markings for the correct size and the correct style (107A). (This pattern also includes pattern pieces, lines and markings for style 108 and 107B that should be ignored.)

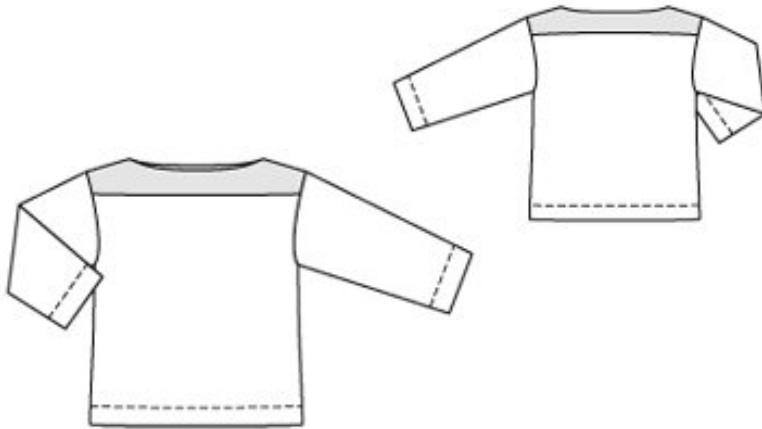
Trace the neck yokes from pieces 21 and 22 as separate pattern pieces.

**burda style magazine pattern do not have seam allowance included.**

Seam and hem allowances to be added: Seams and edges 1.5 cm (5/8 in), sleeve hems 5 cm (2 ins) (flare sleeve hem allowances), hem 1.5 cm (5/8 in).

---

## Step 2 — Cutting out



Main fabric:

Pattern piece 21 – front, cut on a fold 1x

front neck yoke, cut on a fold 1x

Pattern piece 22 – back, cut on a fold 1x

back neck yoke, cut on a fold 1x

Pattern piece 23 – sleeve, cut 2x

Vilene Bias Tape/ stay tape: Iron to neck edges of bands (on matte side).

---

## Step 3 — Sewing

### Shoulder seams

Stitch the shoulder seams of top and of neck yoke. Begin and end each seam exactly at the marked neck edge. Trim seam allowances to 7 mm (1/4 in) wide and press open.

### Neck yoke

Press the allowances on the lower edges of neck band to wrong side. Work from the inside to pin the yoke to neck edge, with right side facing wrong side. Stitch along marked neck edge. Trim seam allowances. Turn the yoke up and press the seam allowances away from band. Topstitch the front and back to the seam allowances, close to the seam. Turn the band to outside and press neck edge. Edgestitch lower edges of band in place. Baste bands to armhole edges.

## **Sleeves**

Stitch the sleeves to armhole edges, beginning and ending exactly on marked sleeve seam lines. At ends of seams, turn seam allowances back and pin. Stitch the side seams from the sleeve joining seams to the lower edges. Remove the pins. Stitch the sleeve seams. Press the seam allowances open.

## **Hem**

Turn the hem allowance to inside, turn the raw edge under, and stitch 4 cm (15/8 ins) from lower edge. Turn sleeve hem allowances to inside, turn raw edges under, and stitch.

---

**BurdaStyle**

02/2012 Boat neck satin top