

## 07/2011 Top with rose brooch

By: burda style magazine

<http://www.burdastyle.com/projects/072011-top-with-rose-brooch>

---



Top with rose brooch burda style magazine patterns FAQ

## Materials

Silk satin

---

### Step 1 — Preparation

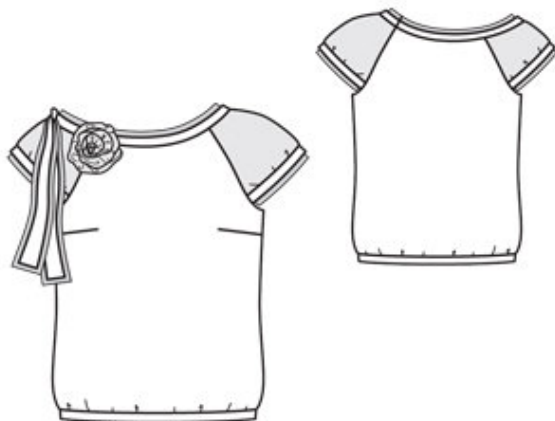
Trace the pattern pieces from the pattern sheet. Trace pattern piece 23 twice from the pattern sheet — once to line marked — right sleeve— and once to line marked — left sleeve— .

Seam and hem allowances:

Seams and edges 1.5 cm (5/8 in).

---

### Step 2 — Cutting out



Satin:

21front 1x

22back 1x

24sleeve band 2x

25tie band, on a fold 1x

a) hem band, see view A,

b) neck edge band, cut on bias, 67 — 69 — 71 — 73 — 75 cm (26 1/2 — 27 1/4 — 28 — 28 3/4 — 29 3/4 ins) long, 3 cm (1 1/4 ins) wide, finished width 1.5 cm (5/8 in),

e) 2 fabric circles (rose), with 11 cm (4 3/8 in) diameter, cut without allowance,

g) bias strip for rose 100 cm (39 1/2 ins) long, 1.5 cm (5/8 in) wide, cut without allowance.

Chiffon:

23right sleeve 1x

23left sleeve (printed side of paper pattern piece facing down) 1x

c) 2 backing strips for sleeve bands, 34  $\hat{=}$  35  $\hat{=}$  36  $\hat{=}$  37  $\hat{=}$  38 cm (131/2  $\hat{=}$  133/4  $\hat{=}$  141/4  $\hat{=}$  141/2  $\hat{=}$  15 ins) long, 3 cm (11/4 ins) wide, cut without allowances,

d) backing strip for neck edge band, 68  $\hat{=}$  70  $\hat{=}$  72  $\hat{=}$  74  $\hat{=}$  76 cm (263/4  $\hat{=}$  273/4  $\hat{=}$  281/2  $\hat{=}$  291/4  $\hat{=}$  30 ins) long, 4 cm (15/8 ins) wide, cut without allowances,

f) backing strip for tie band, 74 cm (291/4 ins) long, 4 cm (15/8 ins) wide, cut without allowances,

h) fabric strip for rose, 100 cm (391/2 ins) long, 5 cm (2 ins) wide, cut without allowances.

Interfacing: See pattern layout.

---

### Step 3 — Bust Darts

Stitch bust darts. Press darts down.

---

### Step 4 — Sleeves

Ease lower edges of sleeves to match length of sleeve bands. Fold sleeve bands on fold line, wrong side facing in, and press. Stitch edges of bands together to sleeves. Trim allowances to 7 mm (1/4 in) wide and neaten together. Press allowances onto bands. Stitch right sleeve to right armhole edges of front and back (seam numbers 3 and 4) and stitch left sleeve to left armhole edges (seam numbers 5 and 6), matching lower edges of sleeve bands to markings. Trim seam allowances to 7 mm (1/4 in) wide and neaten. Press seam allowances onto front and back. Topstitch close to edges of armholes, below sleeves.

---

### Step 5 — Side seams

Stitch side seams. Neaten seam allowances together and press onto back. Sew top ends of seam allowances in place.

---

### Step 6 — Neck band

Stitch narrow edges of neck band together. Press seam open. Fold band in half lengthwise and press, wrong side facing in. Stitch lengthwise edges of band together to neck edge, stretched slightly, to fit. Match seam of sleeve band to left back sleeve attachment seam. Clip seam allowance of right sleeve in corner. Trim allowances, neaten together, and press onto band.

---

### Step 7 — Hem band

Stitch narrow edges of hem band together. Press seam open. Fold waistband in half lengthwise, wrong side facing in. Gather lower edge of front and back to match edge of waistband. Stitch edges of waistband together to lower front and back edge, matching waistband seam to one side seam. Trim seam allowances, neaten together, and press onto waistband.

---

## Step 8 — Tie band

Sew a tie band. Sew strips of chiffon to wrong sides of neck edge band, sleeve bands, and tie band. Also make the rose brooch.

---

## Step 9 — Tie band

Fold tie band lengthwise, right side facing in. Stitch edges together, leaving a section open in centre of seam, for turning. Turn tie band right side out. Sew seam opening closed.

---

## Step 10 — Chiffon strips

Lay strips of chiffon on wrong sides of neck band and sleeve bands so that they extend past fold edges of bands, approx. 1 cm (3/8 in) wide. Sew chiffon strips to edges of bands and to band joining seams by hand, with small stitches. Lay the strip of chiffon on wrong side of tie band so that it extends evenly at the edges. Sew edges of band to chiffon strip by hand, with small stitches. Sew tie band to neck band, at centre of right sleeve.

---

## Step 11 — Rose

Baste the two fabric circles wrong sides together. Stitch strip of chiffon to the fabric circles in a spiral, from the outer edge of the circles to the centre, as far as possible, stitching along centre of chiffon strip. Space the lines of stitching approx. 1 cm (3/8 in) apart. Roll up the rest of the strip and sew it to the flower centre by hand. Sew the satin strip (along the centre) to the spaces between the chiffon strip. Sew a brooch pin to the back of the fabric circle.

---

**BurdaStyle**

07/2011 Top with rose brooch