

# Susan

By: burdastyle

<http://www.burdastyle.com/projects/susan>

---



Eyelet cotton mixed with charmeuse for the yoke gives enough of a day to dinner feel, that this blouse fits right into every time of the day.

## Materials

Eyelet cotton, charmeuse, buttons

# Step 1

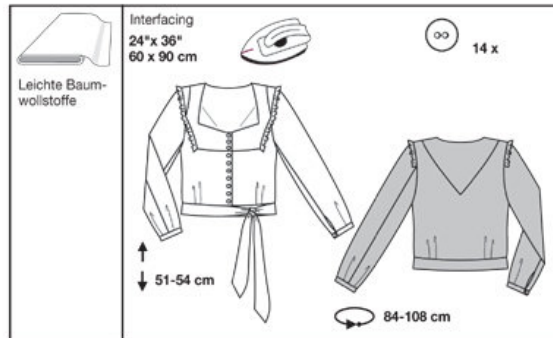
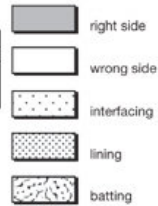
## burda Download-Pattern Blouse 6001 - Instructions



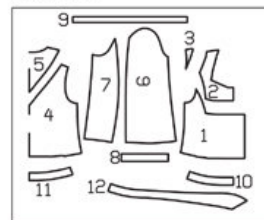
average

semi fitted

burda sizes		55 ins / 140 cm						
		34	36	38	40	42	44	46
yds		2 1/4	2 1/4	2 1/4	2 1/4	2 1/2	2 1/2	2 1/2
m		2.10	2.10	2.10	2.10	2.15	2.15	2.15
→ with nap		→	→	→	→	→	→	→



Patternpieces:

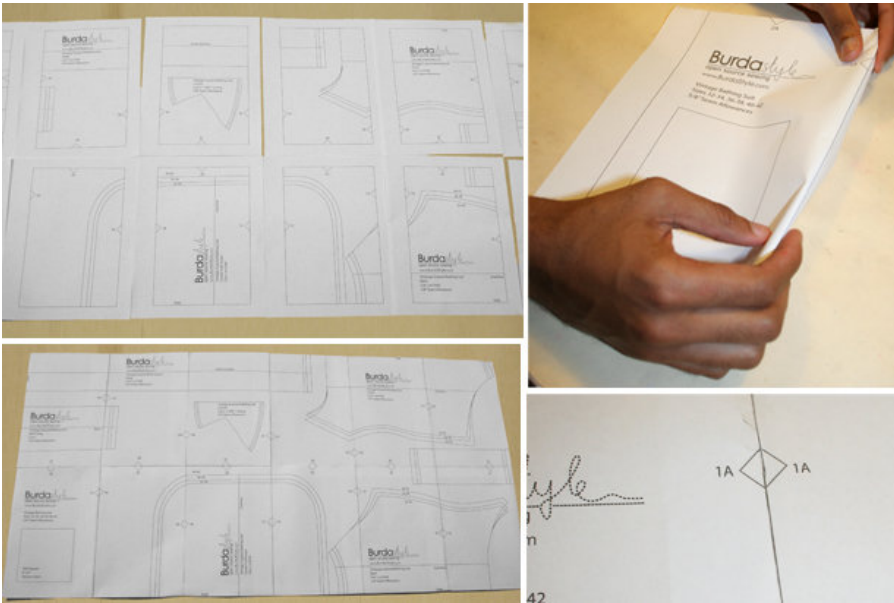


### Pattern Pieces

- 1 Front Piece 2x
- 2 Front Yoke 4x
- 3 Front Yoke 2x
- 4 Back Piece 1x
- 5 Back Yoke 2x
- 6 Upper Sleeves 2x
- 7 Lower Sleeves 2x
- 8 Cuff 2x
- 9 Frill 2x
- 10 Front Waistband 4x
- 11 Back Waistband 2x
- 12 Ribbon 4x

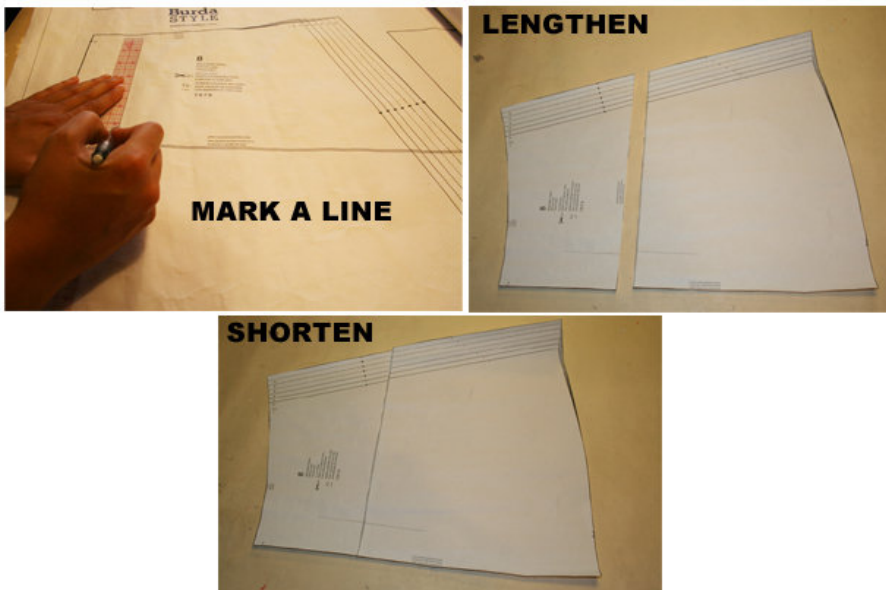
Fabrics: Light cotton fabrics

# Step 2



The patterns can be printed out at the copy shop. If you decide to print them at home, follow the instructions: Paper cut for ANSI A (German DIN A4) prints:  
 The patterns are printed out on 25 sheets with a thin frame. Wait until all sheets are printed out. Arrange the sheets so that they fit together (see additional page with the overview of the prints). Fold the single sheets on the upper and right edge along the thin frame lines. Begin with the left lower sheet and then tape the frame lines together precisely.

### Step 3



#### ADJUST PATTERN SIZES

Select your size according to the Burda-dimension table: dresses, blouses, jackets and coats according to the bust size, trousers and skirts according to the hip width. Change the pattern to fit your measurements if they deviate from the Burda-size chart. Cut out the pattern according to your size. Refer to our "Adjust patterns for mixed sizes" technique

Sizes 36 to 46:

Same distance to the lower edge as in size 34. The upper button hole is the same for all sizes. Draw in the third

button hole in the middle. Place part 1 next to part 2 and draw in the remaining button holes with the same amount

of space in between as in part 2.

#### LENGTHENING OR SHORTENING THE PATTERN PIECES

Our pattern is calculated for a height of 5â€ 6â€ (168 cm). If you are taller or shorter, you can adjust the pattern pieces along the lines marked “lengthen or shorten here”. This way the proper fit is maintained.

Always adjust all pattern pieces along the same line to the same degree.

How to lengthen and shorten pattern pieces:

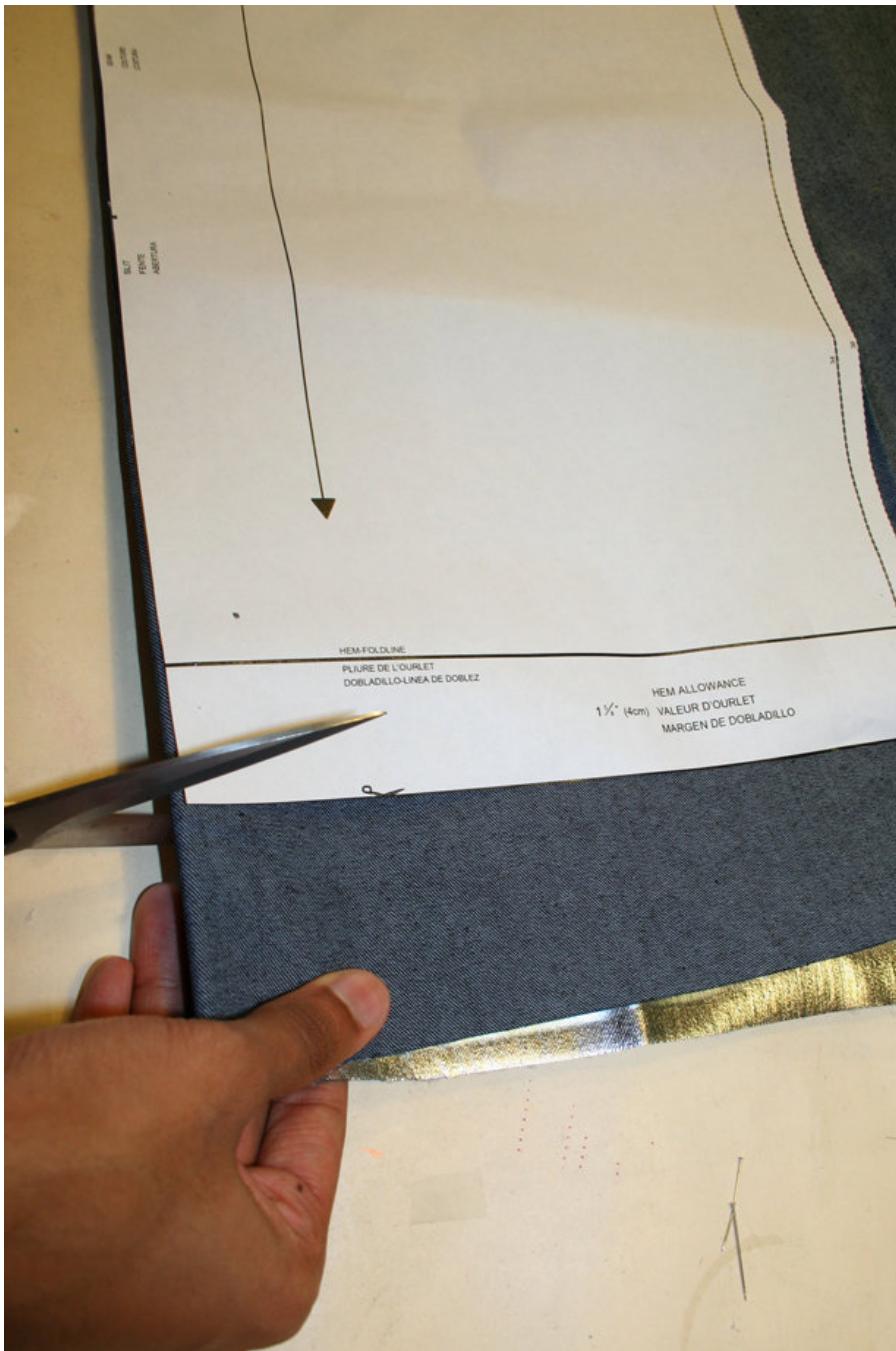
Cut the pattern pieces along the marked lines

To lengthen, slide the two halves of the pattern piece as far apart as necessary.

To shorten, overlap the two halves of the pattern piece as far as necessary. Blend the side edges.

---

## Step 4



## CUTTING OUT

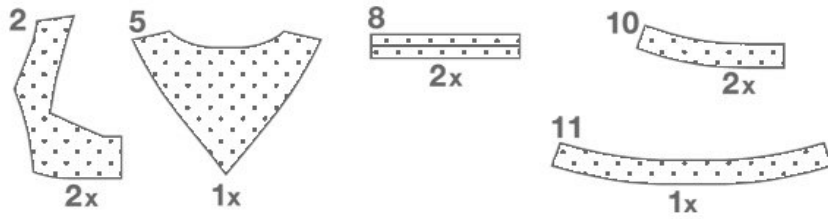
**FOLD** ( ) means: Cut on the fold, the fold being the center of the pattern piece, but never a cut edge or seam. The piece should be cut double, with the fold line forming the center line. Pattern pieces that are outlined with a broken line in the cutting diagrams are to be placed face down on the fabric. The cutting diagrams on the pattern sheet show how the pattern pieces should be placed on the fabric.

The cutting diagrams show the placement of the pattern on the fabric.

For a single layer of fabric, the pattern pieces are pinned to the right side. For double layers of fabric, the right sides are facing and the pattern pieces are pinned to the wrong side. The pattern pieces that are shown extending over the fold of the fabric in the cutting diagram should be cut last from a single layer of fabric.

## Step 5

### INTERFACING



SEAM AND HEMLINE ALLOWANCES are included on an average:

1 5/8" 8" (4 cm) for hem, 5/8" (1.5 cm) for all edges and stitches. Using BURDA copying paper, transfer the lines and signs of the pattern onto the wrong side of the fabric. Instructions can be found in the packaging.

#### INTERFACING

Cut out according to diagram and press onto wrong side of fabric.

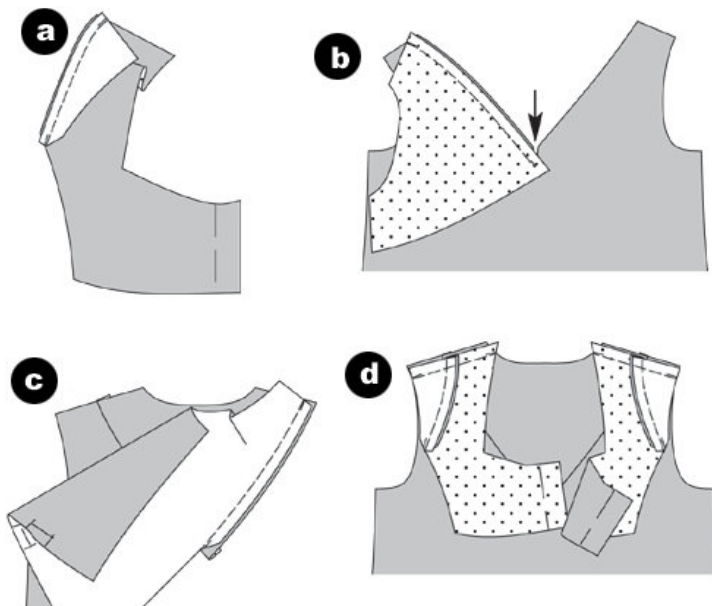
#### Sewing

While sewing, the right sides of the fabric are facing.

Transfer all lines of the pattern onto the right side of the fabric using basting stitches.

---

## Step 6



BLOUSE  
Front Yoke

Pin the smaller front yoke right sides facing onto the other front yoke (seam number 1) and stitch. Trim seam allowances and iron towards front. (a)

#### Back Yoke

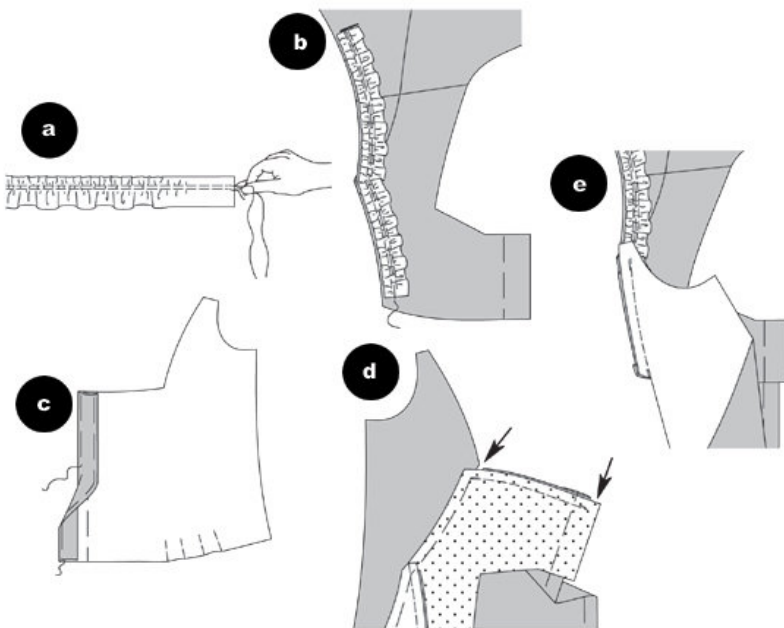
Pin the back yoke to an edge of the back piece first, right sides facing (seam number 2) and stitch. Cut in the back piece in the back middle just shy of cutting in the seam (arrow). (b) Stitch the second edge ©. Trim seam allowances and iron into the yoke.

#### Shoulder Seams

Place the front yokes right sides facing onto the back piece, pin the shoulder seams (seam number 3) and stitch. Trim seam allowances. (d)

---

## Step 7



#### Frill (edges unfinished)

To gather the frill, sew along the length of the frill with loose and wide stitches and be sure to leave a tail at both ends. Pull the bobbin thread so that it matches the length of the yoke's side edges and the sleeve's back base edge until you reach the vertical line (notch). Tie thread. Distribute width evenly. (a)

Pin the frill onto the side edge of the yoke and continuously over the sleeve base edge, as depicted, right sides facing. The frill ends at the vertical line. (b)

#### Front Edges

Fold the Front Edge (Creating the Button Facing) at the SELVAGE LINE, then at the TRIMMING SELVAGE, iron and pin. ©

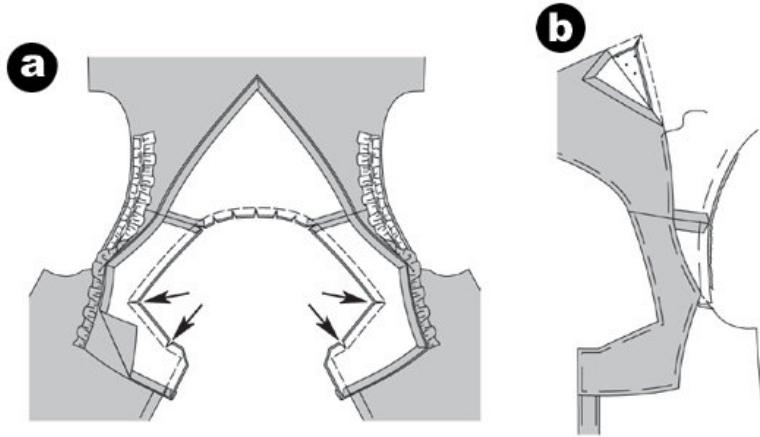
#### Stitching the Front Yoke

Stitch the front yoke onto the front piece, right sides facing. Coming from the front edge until you reach the rounded edge (seam number 4). The seam allowance of the yoke is overlapping at the front edge (arrow) (d).

Stitch the remaining yoke, taking in the frill (e). Trim seam allowances and iron into yoke. Instructions are included in the pattern.

---

## Step 8



### Doubling the yoke/ Neckline

Stitch shoulder seams at the front and back yoke (seam number 3). Fold apart and iron seam allowances.

Pin yoke right sides facing onto the yoke which has already been attached with the shoulder seams meeting. Stitch the front edges (seam number 4) and the neckline edges onto another. Trim seam allowances and cut in at the rounded edges, cut edges diagonally. Cut the front yoke at the edges until you are just shy of cutting the stitching line (arrows) (a)

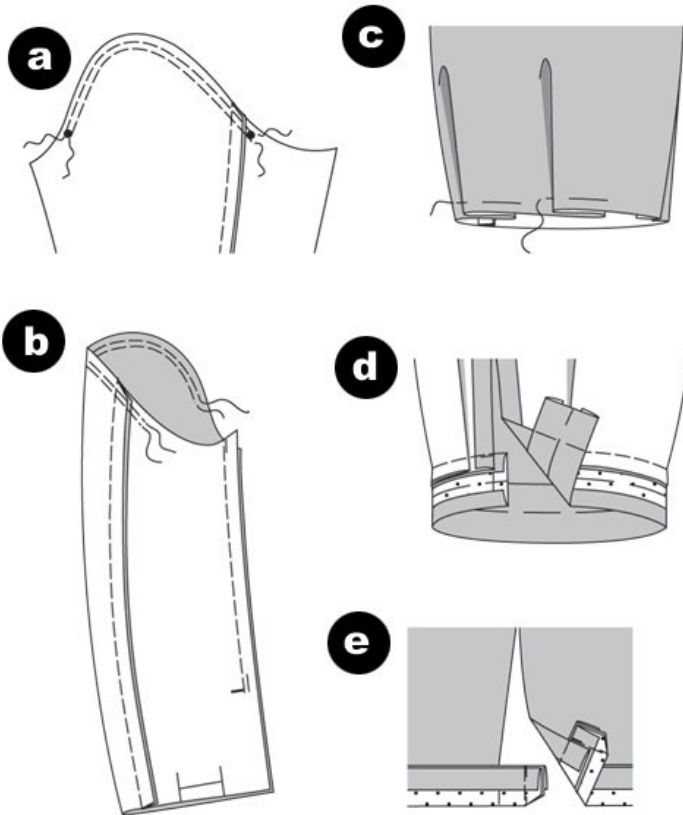
Turn yoke. Pin edges and iron. Pin inner edges onto the base seams. Stitch yoke neatly at the base seams, taking in the inner yoke. (Stitch in the Ditch) (b)

### Side Seams

Place front pieces right sides facing onto the back piece, stitch side seams (seam number 6), trim seam allowances, clean (serge) seam allowance held together, iron to one side.

---

## Step 9



#### Back Sleeve seams

Place lower sleeve right sides facing onto the upper sleeve, pin back seam (seam number 8) and stitch. Trim seam allowances, clean seam allowance (serge) held together and iron into the lower sleeve.

To hold the sleeve in place, place two large stitches next to each other from \_ to \_ . (a)

#### Front Sleeve Seams/ Slit

Fold sleeve lengthwise, stitch front sleeves seams from top until you reach the slit mark (seam number 9), secure seam ends. Trim seam allowances and fold apart, iron, fold in and iron the slit's seam allowance. (b)

Place pleats of the lower sleeve edge following the direction of the arrow and pin. ©

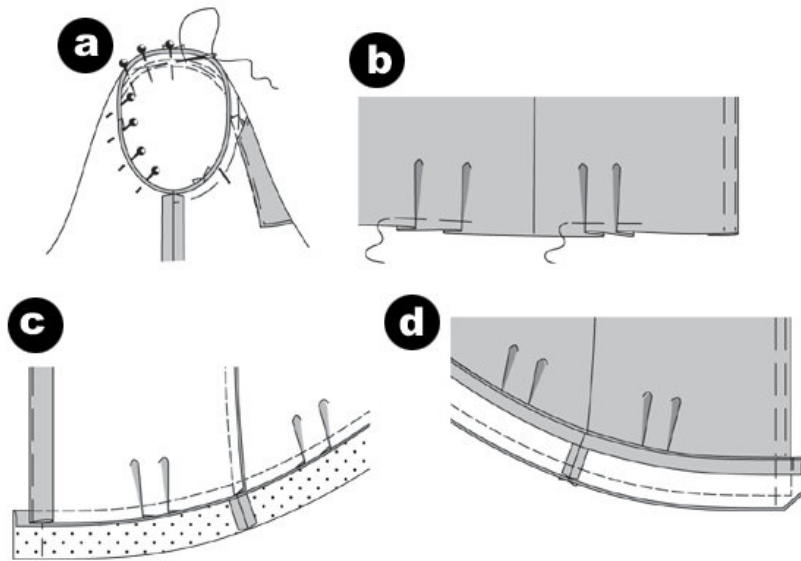
#### Cuffs

Pin the cuffs onto the lower sleeve edge (seam number 11) and let the underlap stick out at the upper sleeve. Stitch. Iron the seam allowances into the cuff. Fold over and iron the seam allowance of the other long edge. (d)

Fold the cuff along the fold line, right sides facing. stitch narrow edges. Trim allowances and cut the corners at an angle. (e)

Along the fold line, fold the cuffs inside and pin along the seam line. Press. Topstitch all edges of the cuff neatly, attaching the inner portion to the base seam. Add in BUTTON HOLE.

## Step 10



### Adding in Sleeves

To keep the sleeves in place, pull the bobbin thread of the stitch line slightly.

Place sleeves into the sleeve base right sides facing. When adding in sleeves, 4 points are important for the right fit:

The vertical lines (10) of the upper sleeve and the front piece have to meet. The vertical lines of the lower sleeve has to meet the side seam. The vertical line of the lower sleeve has to meet the side seam. The width in between the \* \* has to be distributed evenly to avoid wrinkles. Pin and stitch sleeves starting from the side of the sleeve. Neaten (serge) seam allowance and iron into the front and back piece. (a)

### Waistband

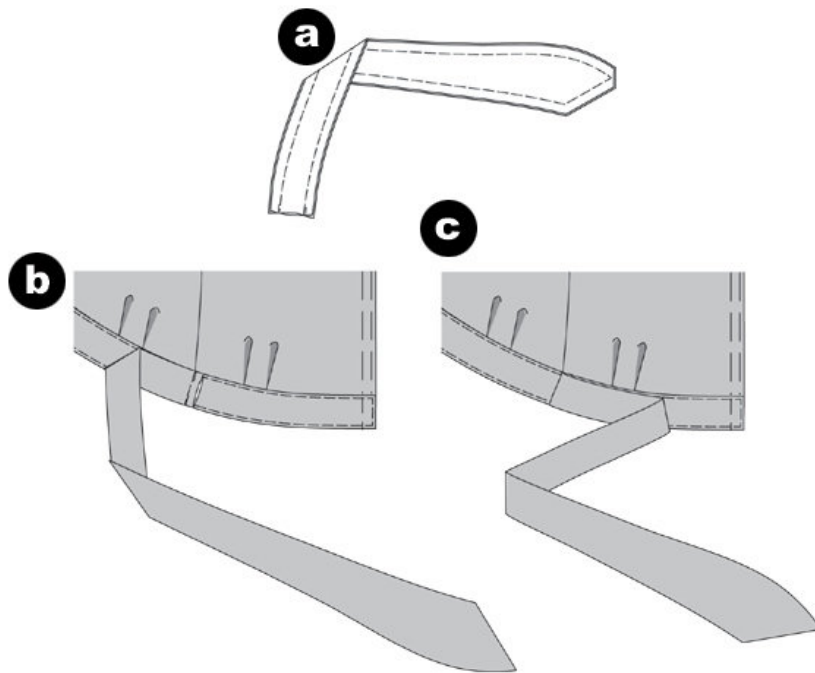
Place pleats of the lower blouse edge following the direction of the arrow and pin. Stitch the side seams of the lined and unlined waistband pieces (seam number 7). (b)

Pin the waistband with interfacing onto the lower blouse edge, side seams meet. Stitch. Trim seam allowances and iron them into the waistband. At the waistband without interfacing, iron the seam allowance of the upper edge inward. ©

Pin the waistband without the interfacing onto the waistband that has already been pinned, right sides facing, side seams meet. Stitch. Trim seam allowances and iron them into the waistband. Turn waistband. Pin edges, iron. Pin the inner edge onto the base seam. Stitch all edges neatly, taking in the inner piece. (d)

---

## Step 11



### Ribbon

Pin two pieces onto another each, right sides facing. Stitch edges onto another according to the drawing. Trim seam allowances, cut edges diagonally. Turn pieces. Pin edges, iron. Neaten open edges together. (a)

Pin the ribbon onto the side seams so that the unbasted seam allowances lie on the front waistband (b). Stitch the ribbons to the blouse, iron them to the front ©.

Add in the **BUTTON HOLES** into the front right edge and the waistband. Sew the **BUTTONS** in the front middle onto the yoke, the left front piece, the waistband and the cuffs.

---

**BurdaStyle**

Susan