

Allie

By: burdastyle

<http://www.burdastyle.com/projects/allie>



When designing the robe, I, Benedikta, imagined big color blocks in primary colors, yellow, blue and red. Now having sewn it up quite some time later we decided on a bit more sophisticated color combination in which everyone following our blog posts had a part in. The solid colors really pronounce the design but I can

very well imagine it in a mix of prints or stripes and solids. If our robe would not have been all in silk we would have taken the sleeve part double and added a thin layer of quilting in between with the typical diamond shaped top-stitching. That extra would be a nice idea if the gown is made as a warm cozy Christmas present surprise. Enjoy!

Materials

3 1/2 yards silk or cotton in 2 or 3 colors, (optional: snap for center front)

Step 1

burda Download-Pattern
Robe 6031 - Instructions

●●□□
leicht normal weit

burda sizes		55 ins / 140 cm						
		34	36	38	40	42	44	46
yds	3 1/4	3 1/4	3 1/2	3 1/2	3 1/2	3 1/2	3 1/2	3 1/2
m	2,90	2,90	3,00	3,00	3,20	3,00	3,00	3,00

→ with nap

Baumwollstoffe

right side
wrong side
interfacing
lining
batting

Patternpieces:

- 1 Center front piece 2x
- 2 Side front piece 2x
- 3 Center back piece 1x
- 4 Side back piece 2x
- 5 Sleeve 2x
- 6 Stand-up collar 1x
- 7 Pocket pouch 4x
- 8 Front bottom facing 2x
- 9 Front top facing 2x
- 10 Back facing 1x
- 11 Tie-belt 2x
- 12 Belt loops 1x

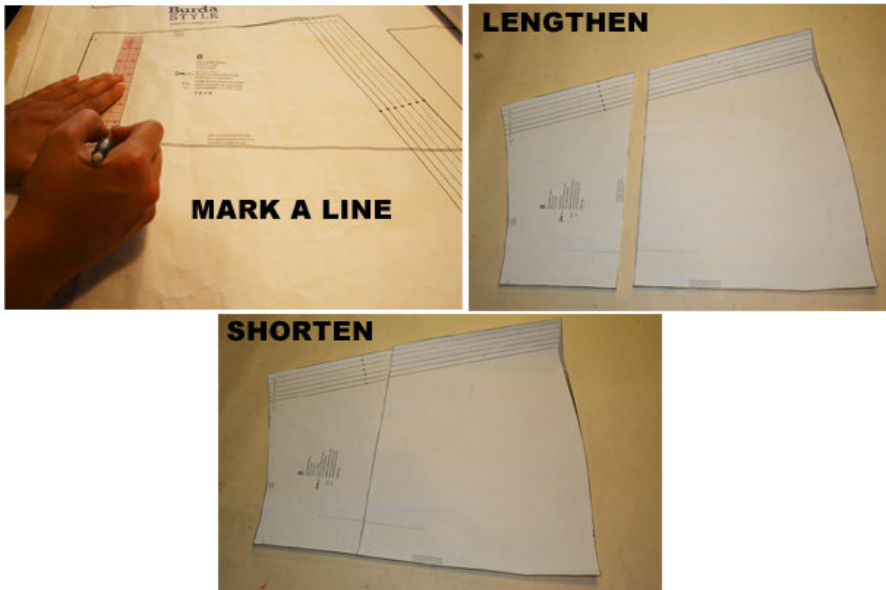
Fabrics: Cotton fabrics

Step 2



The patterns can be printed out at the copy shop. If you decide to print them at home, follow the instructions: Paper cut for ANSI A (German DIN A4) prints: The patterns are printed out on 40 sheets with a thin frame. Wait until all sheets are printed out. Arrange the sheets so that they fit together (see additional page with the overview of the prints). Fold the single sheets on the upper and right edge along the thin frame lines. Begin with the left lower sheet and then tape the frame lines together precisely.

Step 3



ADJUST PATTERN SIZES

Select your size according to the Burda-dimension table: dresses, blouses, jackets and coats according to the bust size, trousers and skirts according to the hip width. Change the pattern to fit your measurements if they deviate from the Burda-size chart. Cut out the pattern according to your size.

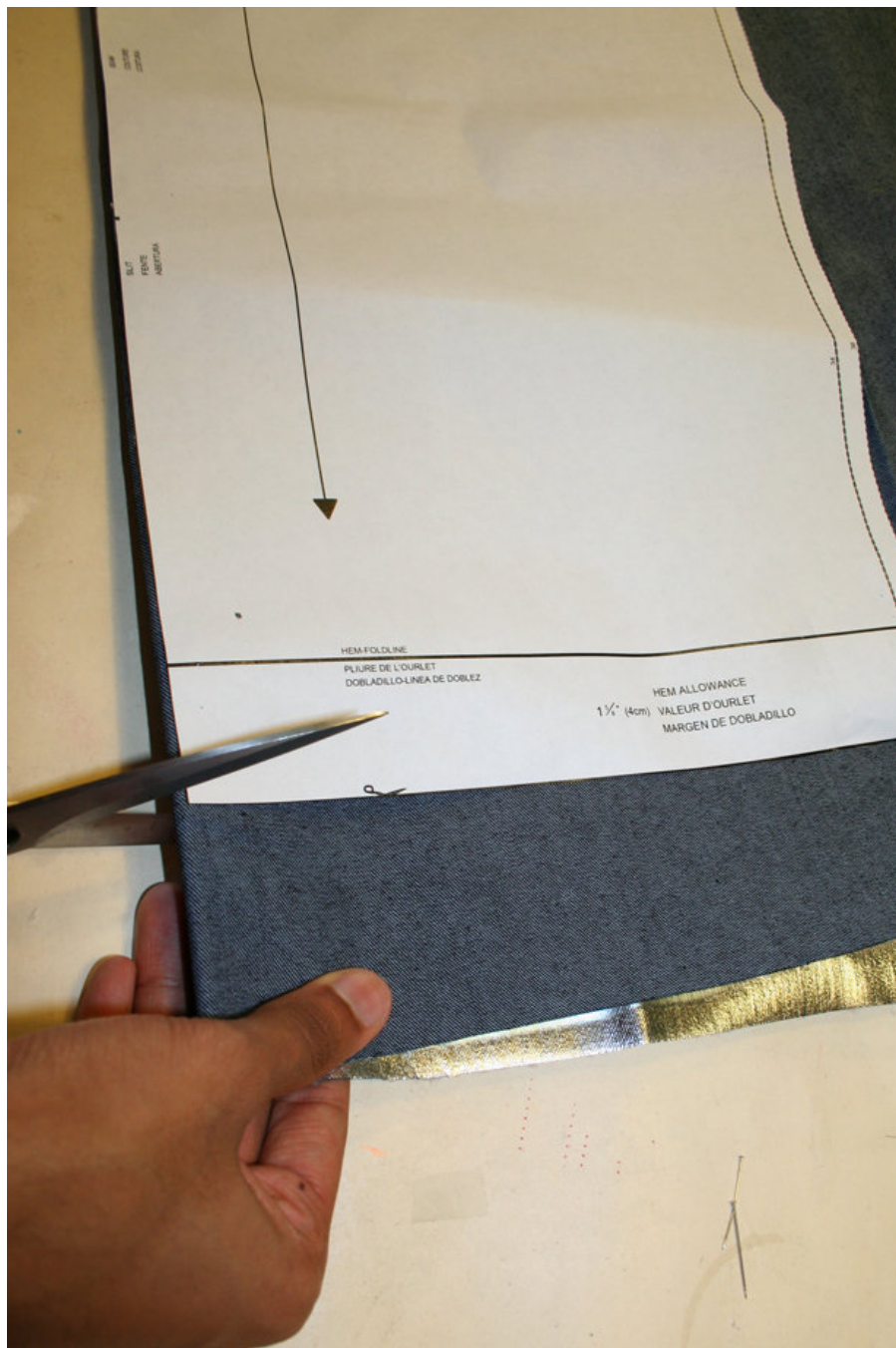
LENGTHENING OR SHORTENING THE PATTERN PIECES Our pattern is calculated for a height of 5'6" (168 cm). If you are taller or shorter, you can adjust the pattern pieces along the lines marked "lengthen or shorten here". This way the proper fit is maintained. Always adjust all pattern pieces along the same line to the same degree.

How to lengthen and shorten pattern pieces: Cut the pattern pieces along the marked lines

To lengthen, slide the two halves of the pattern piece as far apart as necessary.

To shorten, overlap the two halves of the pattern piece as far as necessary. Blend the side edges.

Step 4

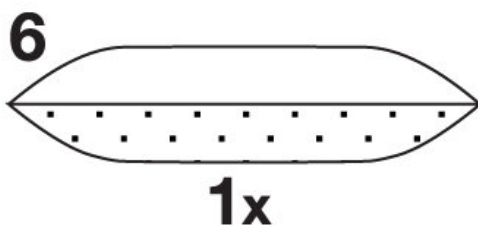


CUTTING OUT FOLD () means: Cut on the fold, the fold being the center of the pattern piece, but never a cut edge or seam. The piece should be cut double, with the fold line forming the center line. Pattern pieces are outlined with a broken line in the cutting diagrams and are placed face down on the fabric. The cutting diagrams on the pattern sheet show how the pattern pieces should be placed on the fabric.

The cutting diagrams show the placement of the pattern on the fabric. For a single layer of fabric, the pattern pieces are pinned to the right side. For double layers of fabric, the right sides are facing and the pattern pieces are pinned to the wrong side. The pattern pieces that are shown extending over the fold of the fabric in the cutting diagram should be cut last from a single layer of fabric.

Step 5

INTERFACING



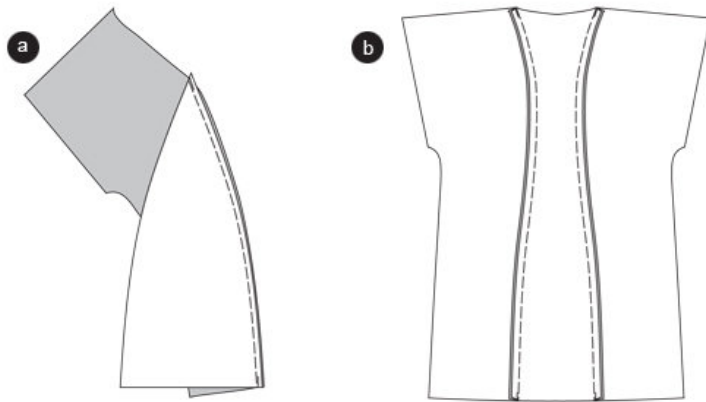
SEAM AND HEMLINE ALLOWANCES are included on an average: 1 1/2" (4 cm) for the hemline, 5/8" (1.5 cm) for all edges and stitches. Using BURDA copying paper; transfer the lines and signs of the pattern onto the wrong fabric side. Instructions can be found in the packaging.

INTERFACING Press the interfacing piece according to the cutting diagram onto the wrong side of the fabric.

SEWING

While sewing, the right sides of the fabric are facing. Transfer all lines of the pattern onto the right side of the fabric using basting stitches.

Step 6



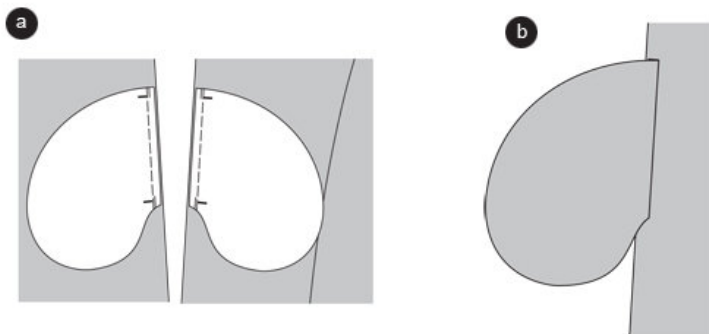
BATHROBE

Front and back princess seams

Position the center front and side front pieces together, right sides facing. Pin the princess seams (seam 1) and stitch. Trim allowances and press to the front (a).

Position the center and side back pieces together, right sides facing. Pin the princess seams (seam 2) and stitch. Trim allowances and press into the side back pieces (b).

Step 7

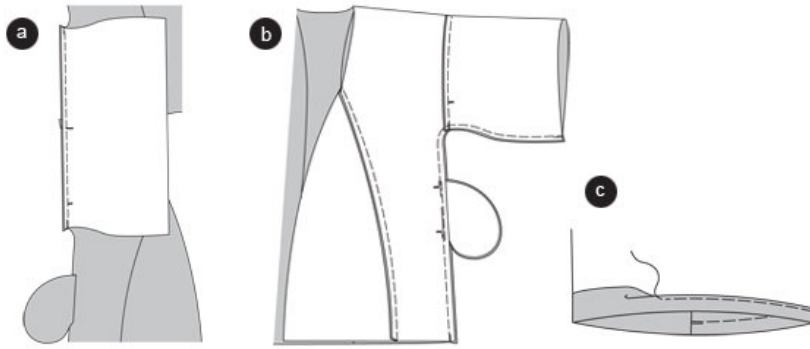


TOPSTITCH POCKET POUCH

Pin the pocket pouch between the cross lines on the front and back pieces, right sides facing. Stitch. Secure seam ends (a)

Press the pocket pouches over the seam line (b)

Step 8



SHOULDER SEAMS

Position the front and back pieces together, right sides facing. Pin the shoulder seams (seam 3) and stitch. Trim allowances and press into the back piece.

APPLY SLEEVES

Position the sleeves on the armhole, right sides facing. The cross lines 7 meet. The sleeve center cross lines meet the shoulder seam. Pin the sleeves and stitch. Trim allowances and press into the front and back piece (a).

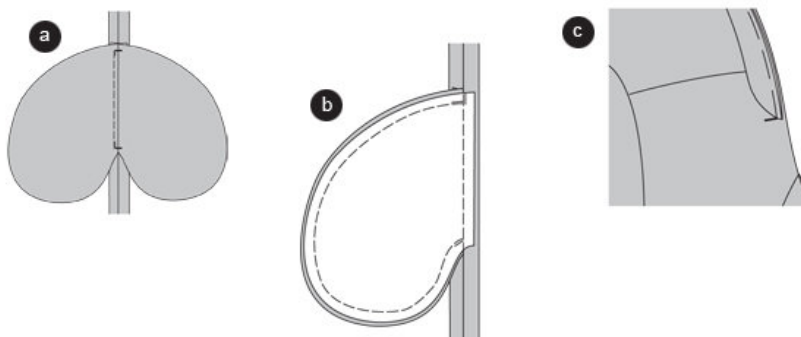
SIDE and UNDERSLEEVE SEAMS

Position the front piece on the back piece, right sides facing. Fold the sleeve lengthwise. Pin the seams of the sleeves and the sides seams (seam 8). Stitch. Leave the pocket openings between the cross lines unstitched, but pinned. Secure seam ends. Neaten allowances and press apart (b).

SLEEVE CUFF

Turn the cuff, fold inside and pin. Topstitch the cuff seam narrowly ©.

Step 9



ONSEAM POCKET

Topstitch the pocket opening edges $\hat{A}^{\hat{A}}$ (0.5 cm) between the cross lines (a).

Press the pocket pouches inside the front pieces, position together, pin and stitch. Neaten allowances

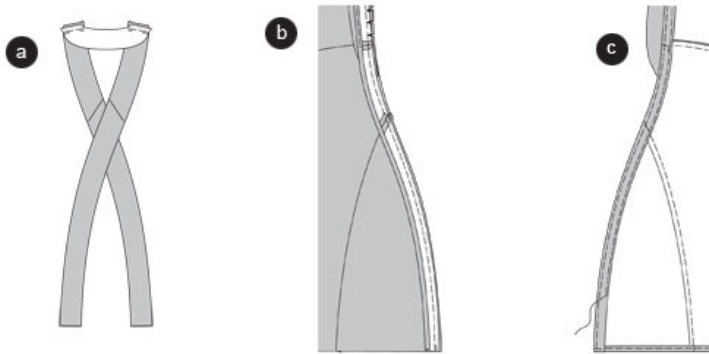
altogether (b).

STAND-UP COLLAR

Fold the stand-up collar along the fold line, wrong sides facing. Position the open edges together and pin.

Pin the stand-up collar with its interfaced side between the cross lines of the neckline (seam 4), right sides facing.

Step 10



FACINGS

Stitch the front facings together (seam 5). Stitch the back facings on the shoulder edges of the front facings (seam 6), right sides facing. Press allowances apart. Fold the inner facing edge $\hat{A}^{1/4}$ (0.7 cm) inside, then pin and press. Stitch the allowance on the back facing (a).

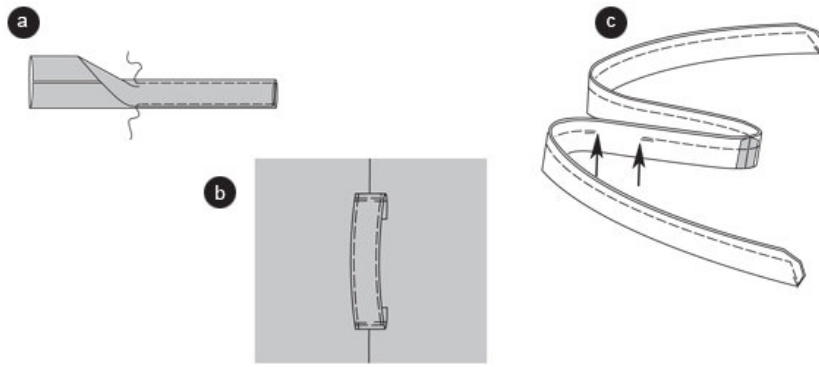
Pin the facing on the front pieces and the back neckline, right sides facing. Stitch facing sandwiching the collar. Trim allowances (b).

HEMLINE

Turn the bottom facing edges to the front and press. Stitch the hemline .

Turn the facings inside and press. Topstitch the edges narrowly. Pin the inner facing edges on the front pieces and topstitch narrowly. The facing at the back piece stays loose .

Step 11



BELT LOOPS

Fold the long edges of the strips from both sides so that the edges meet in the center. Then fold the strip again lengthwise and press; the wrong sides are facing. Stitch the edges narrowly. Cut the strip into two equally long pieces. Neaten the ends and turn inside (a). Stitch the loops as marked onto the side seams (b).

BELT

Position the pieces together, right sides facing. Stitch the center back seam. Press allowances apart.

Fold the belt lengthwise, right sides facing. Stitch the edges together, thereby leaving an opening to allow access for the purpose of turning it inside out (arrows). Secure seam ends. Trim allowances, cut the corners at an angle. Turn the belt inside out. Pin the edges, press and topstitch narrowly, thereby stitching the open seam part ©.

BurdaStyle

Allie