

# 5/2010 Kimono Dress

By: burda style magazine

<http://www.burdastyle.com/projects/52010-kimono-dress>

---



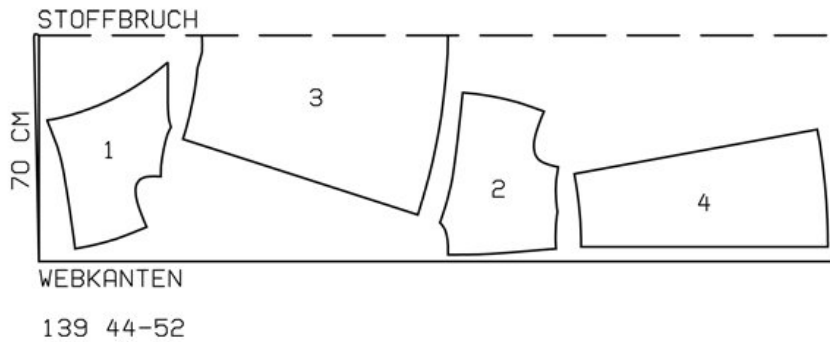
Kimono Dress burda style magazine patterns FAQ

## Materials

Print Batiste and plain Georgette for lining

---

## Step 1 — Preparation



Trace the pattern pieces from the pattern sheet. To cut the lining, use piece 4 for the front skirt lining panel and for the back skirt lining panel.

Seam and hem allowances:

Seams, edges and hem 1.5 cm (5/8 in).

## Step 2 — Cutting Out



Batiste:

1 front with sleeve 2x

2 back with sleeve 2x

3 front skirt panel, on a fold 1x

4back skirt panel 2x

Lining:

1front to lining line 2x

2back to lining line 2x

4front skirt panel, on a fold 1x

4back skirt panel 2x

---

### **Step 3 — Darts, shoulder seams and top sleeve seams**

Stitch darts in bodice and press toward centre. Stitch shoulder seams and top sleeve seams as continuous seams. Trim seam allowances to 7 mm (1/4 in) wide, neaten together and press onto back.

---

### **Step 4 — Bias tape**

Unfold one lengthwise edge of pre-folded bias tape and press flat. Baste bias tape to neck edge so that fold edge lies on garment piece, 2 cm (3/4 in) past marked neck edge and open edge of tape lies on allowance.

---

### **Step 5 — Back skirt panels**

Stitch back skirt panels to back pieces. Press seam allowances down

---

### **Step 6 — Zipper**

Sew invisible zip to back edges. Stitch centre back seam from lower edge to zip.

---

### **Step 7 — Lining**

Stitch darts and shoulder seams in upper lining. Trim allowance on edges of armholes to 7 mm (1/4 in) wide, neaten, press to inside, and stitch 5 mm (3/16 in) from edge. Pin lining right sides together with neck edge of dress. At zip opening, turn lining back, about 5 mm (3/16 in) before edge, and pin to neck edge. Open allowances at opening edges of dress and pin to neck edge, over lining. Stitch along neck edge. Turn allowances on opening edges of dress to inside. Lay lining up and stitch to seam allowances, next to seam, as far as possible. Turn lining to inside. Baste lining to lower edges of front. Leave lining at lower back edges unattached. Sew lining to shoulder seams, with a few stitches by hand.

---

### **Step 8 — Edgestitching bias tape on neck edge**

At neck edge, edgestitch basted bias tape in place.

---

### **Step 9 — Fronts**

Pin right front to left front, matching centre fronts. Baste lower front edges together.

---

### **Step 10 — Front skirt panels**

Fold inverted pleat in front skirt panel in arrow direction and baste. Stitch front skirt panel to fronts. Press seam allowances down.

---

## Step 11 — Side seams and underneath sleeve seams

Stitch side seams and underneath sleeve seams as continuous seams. Neaten seam allowances together and press onto back.

---

## Step 12 — Skirt lining

Stitch centre back seam and side seams of skirt lining panels. Leave slits, about 30 cm (12 ins) long, at lower ends of side seams. Stitch back lining pieces to back skirt lining panels. Lay skirt lining up and stitch front skirt lining panel to seam allowances, close to front skirt joining seam, stitching as far as possible at side seams. Lay skirt lining up and sew remaining open edges up to side seams by hand. Sew back opening edges of lining to zip tapes.

---

## Step 13 — Hems

Lay hem and sleeve hem allowances to inside, turn half in, press and stitch. Hem lining so that it is about 2 cm (3/4 in) shorter than dress. Turn in allowances at side slit edges of lining and stitch in place.

---

**BurdaStyle**

5/2010 Kimono Dress