

5/2011 Blouson Dress

By: burda style magazine

<http://www.burdastyle.com/projects/52011-blouson-dress>



Blouson Dress burda style magazine patterns FAQ [Updated 1/17/2012] — Please note that the instructions for this project have been revised.

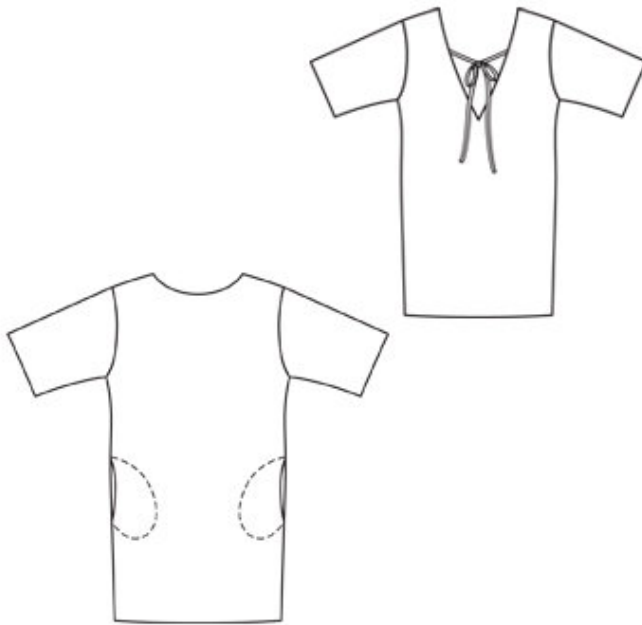
Materials

Satin print

Step 1 — Preparation

Trace the pattern pieces from the pattern sheet in your size. This pattern comes in the sizes 34, 36, 38, 40, 42. Lengthen piece 22 as indicated. Trace the pocket piece from piece 21 as a separate pattern piece — it is the same for all sizes. Seam and hem allowances: Seams and edges 1.5 cm (5/8 in), hem and sleeve hems 4 cm (15/8 ins).

Step 2 — Cutting Out



Cut the following pieces:

Main material:

Pattern piece number 21 – front piece, cut on fold x2

(also trace and cut piece for pocket marked on this pattern piece, cut pocket piece x4)

Pattern piece number 22 – back piece, cut on fold x2

Pattern piece number 23 – sleeve, cut x2

Pattern piece number 24 – front neck facing, cut on fold x1

Pattern piece number 25 – back neck facing, cut on fold x1

Also cut the following pieces (not on pattern sheet):

a) tie bands – cut two on bias strips 75 cm (30 in) long and 3 cm (1 1/4 in) wide. (including seam allowances)

Interfacing:

Cut interfacing for and iron on to facing pieces.

Step 3 — Tie bands

Turn in one end of each tie band. Fold bands lengthwise, right sides facing in. Stitch 7 mm (1/4 in) from fold edge. Turn bands right side out and press. Sew turned-under ends of bands closed.

Tack tie bands to back neck edge, between markings.

Step 4 — Shoulder seams and facing seams

Lay front piece on the back piece, right sides facing each other. Pin shoulder seams together and stitch. Press seam allowances open. Repeat for facing pieces.

Step 5 — Attaching facing

Lay the facing right side towards the right side of neck edge, lining up the shoulder seams. Pin and stitch along neck edge. Turn facing up and edge stitch facing together with seam allowance, making sure stitch is close to seam. Turn facing to inside. Press edge. Tack edge of facing shoulder seam to bodice shoulder seam.

Step 6 — Sleeves

Stitch sleeves to front and back pieces. Press seam allowance toward sleeves.

Then stitch side seams of dress and sleeve seams as continuous seams but leave the pocket openings open. Press seam allowances open.

Step 7 — In-seam pockets

Pin pocket pieces right sides together with seam allowances of pocket opening edges.

Stitch pocket pieces to edges of pocket openings, close to side seams, and along seam lines on edges of pocket openings.

Stitch pocket pieces together. Press pocket pieces forward and tack to wrong side of fronts.

To stitch pocket pieces in place, first pin the paper pattern piece to the dress front. Then stitch along edge of pattern piece.

Step 8 — Hem

Fold and press the hem allowances of dress and sleeves to inside. Stitch hems in place by hand using invisible stitch for a clean look.

BurdaStyle

5/2011 Blouson Dress