

# Alexis

By: burdastyle

<http://www.burdastyle.com/projects/alexis>

---



This slim pencil skirt is highly suitable for any work environment. It fits just below the natural waist and with pleats on one side it accentuates both slender and curvy figures.

## Materials

Wool blend with embroidered details

---

## Step 1

## burda Download-Pattern Skirt 7945 - Instructions



easy

semi fitted

| burda sizes | 45 ins / 114 cm |       |       |       |       |       |       |       |       |       | 55 ins / 140 cm |       |       |       |       |       |  |  |  |  |
|-------------|-----------------|-------|-------|-------|-------|-------|-------|-------|-------|-------|-----------------|-------|-------|-------|-------|-------|--|--|--|--|
|             | 36              | 38    | 40    | 42    | 44    | 46    | 48    | 50    | 36    | 38    | 40              | 42    | 44    | 46    | 48    | 50    |  |  |  |  |
| yd          | 1 1/4           | 1 1/2 | 1 3/4 | 1 3/4 | 1 3/4 | 1 3/4 | 1 3/4 | 1 3/4 | 1 1/2 | 1 3/4 | 1 3/4           | 1 3/4 | 1 3/4 | 1 3/4 | 1 3/4 | 1 3/4 |  |  |  |  |
| m           | 1.20            | 1.20  | 1.20  | 1.20  | 1.20  | 1.20  | 1.20  | 1.20  | 1.20  | 1.20  | 1.20            | 1.20  | 1.20  | 1.20  | 1.20  | 1.20  |  |  |  |  |
| Lining      | 1 1/4           | 1 1/4 | 1 1/4 | 1 1/4 | 1 1/4 | 1 1/4 | 1 1/4 | 1 1/4 | 1 1/4 | 1 1/4 | 1 1/4           | 1 1/4 | 1 1/4 | 1 1/4 | 1 1/4 | 1 1/4 |  |  |  |  |
| m           | 1.20            | 1.20  | 1.20  | 1.20  | 1.20  | 1.20  | 1.20  | 1.20  | 1.20  | 1.20  | 1.20            | 1.20  | 1.20  | 1.20  | 1.20  | 1.20  |  |  |  |  |

→ with nap

Gabardine,  
linen blends  
lightweight  
wools,  
crepe fabrics

Interfacing

36" x 12"  
(90 cm x 30 cm)

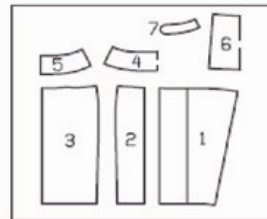
8"  
(20 cm)

23"- 24 1/2"  
(58-63 cm)

35 1/2"- 46"  
(89-122 cm)

- right side
- wrong side
- interfacing
- lining
- batting

Patternpieces:



### PATTERN PIECES:

- 1 Center front skirt panel 1x
- 2 Side front skirt panel 2x
- 3 Skirt back 2x
- 4 Front waistband 2x
- 5 Back waistband 4x
- 6 Pocket 1x
- 7 Tab 2x

## Step 2

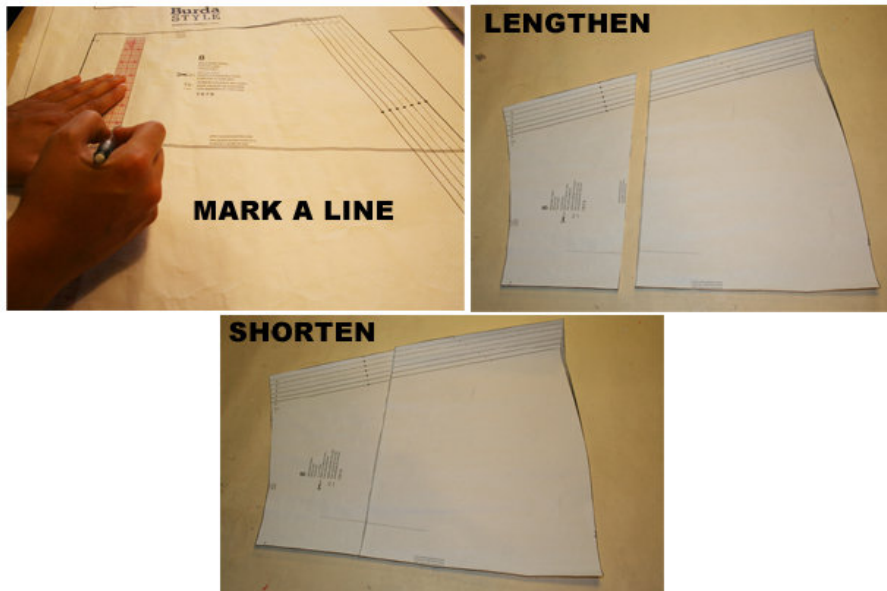


The patterns can be printed out at the copy shop. If you decide to print them at home, follow the instructions:  
 Paper cut for ANSI A (German DIN A4) prints:  
 The patterns are printed out with a thin frame. Wait until all sheets are printed out. Arrange the sheets so that they fit together (see additional page with the overview of the prints). Fold the single sheets on the upper and

right edge along the thin frame lines. Begin with the left lower sheet and then tape the frame lines together precisely.

---

### Step 3



#### ADJUST PATTERN SIZES

Select your size according to the Burda-dimension table: dresses, blouses, jackets and coats according to the bust size, trousers and skirts according to the hip width. Change the pattern to fit your measurements if they deviate from the Burda-size chart. Cut out the pattern according to your size.

Refer to our “ Adjust patterns for mixed sizes” technique

#### LENGTHENING OR SHORTENING THE PATTERN PIECES

Our pattern is calculated for a height of 5’ 6” (168 cm). If you are taller or shorter, you can adjust the pattern pieces along the lines marked “lengthen or shorten here”. This way the proper fit is maintained.

Always adjust all pattern pieces along the same line to the same degree.

How to lengthen and shorten pattern pieces:

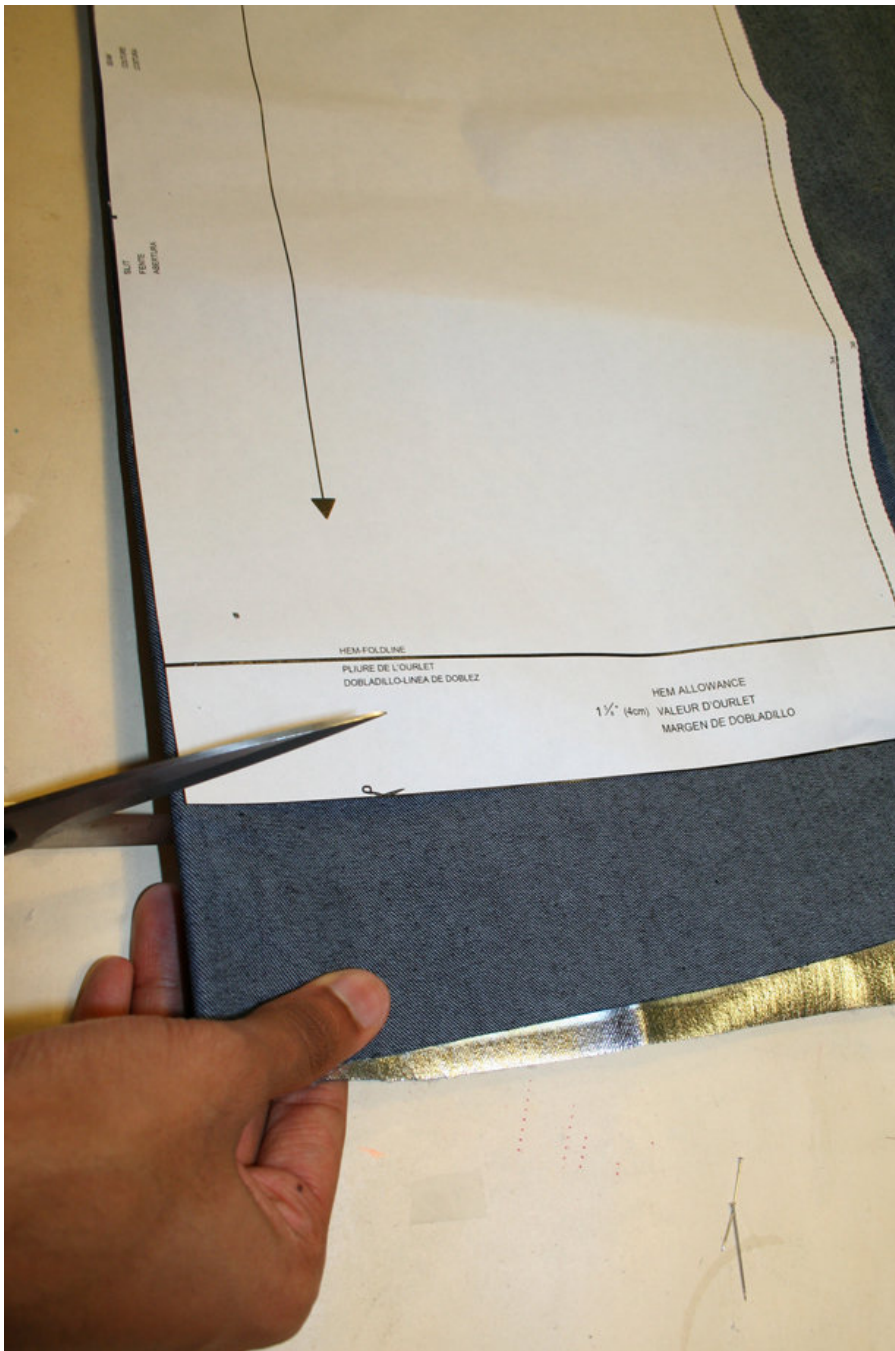
Cut the pattern pieces along the marked lines

To lengthen, slide the two halves of the pattern piece as far apart as necessary.

To shorten, overlap the two halves of the pattern piece as far as necessary. Blend the side edges.

---

### Step 4



## CUTTING

**FOLD** ( ) means: Here is the center of a pattern piece, but in no case a cut edge or a seam. The piece should be cut double, with the fold line forming the center line. Pattern pieces that are outlined with a broken line in the cutting layout are to be placed face down on the fabric.

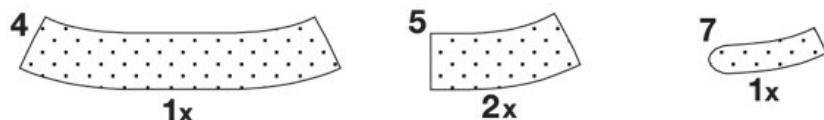
The cutting layouts on the pattern sheet show how the pattern pieces should be placed on the fabric. When cutting from a single layer of fabric, the pattern pieces are pinned to the right side. For double layers of fabric, the right sides are facing and the pattern pieces are pinned to the wrong side. The pattern pieces that are shown in the cutting layout extending over the fold of the fabric should be cut last from a single layer of fabric.

Please note: In all cases, cut piece 1 from a single layer of fabric. Pin the pattern piece, printed side up, to the right side of the fabric.

---

## Step 5

### INTERFACING



SEAM AND HEM ALLOWANCES are included on pattern pieces: 1 1/4" (3 cm) for hem and 5/8" (1.5 cm) at all other seams and edges. Transfer all pattern markings to wrong side of fabric pieces using BURDA dressmaker's carbon paper. Follow instructions included with carbon paper.

#### INTERFACING

Cut out interfacing pieces as illustrated and iron to wrong side of fabric pieces.

#### LINING

Cut out lining using pattern pieces 1 to 3 and 6.

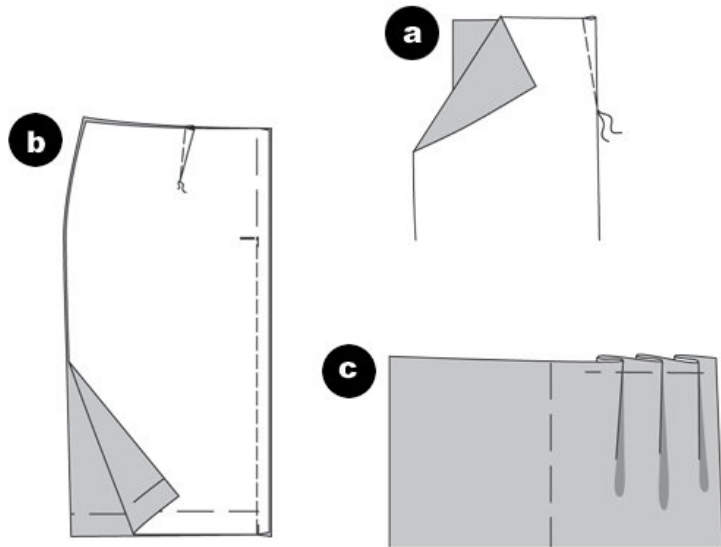
Please note: In all cases, cut piece 1 from a single layer of lining fabric. Pin the pattern piece, printed side down, to the right side of the fabric. \_See cutting layouts on the pattern sheet.

#### SEWING

When sewing pieces together, right sides of fabric should be facing. Use basting stitches to make pattern markings visible on the right side of the fabric pieces.

---

## Step 6



## SKIRT

### Darts

Baste darts in skirt back pieces. Stitch each dart from edge toward point. Knot threads at points of darts. Press darts toward center back. (a)

### Center back seam / Slit

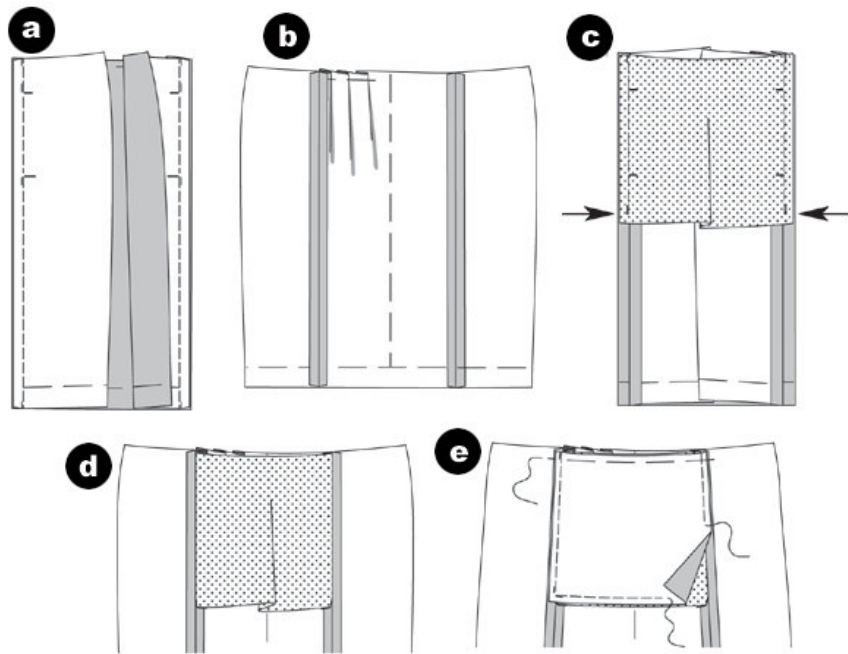
Lay skirt backs together, right sides facing. Baste center back seam. Stitch seam from slit mark to lower edge. Tie off ends of seam. Leave slit basted. Finish edges of seam allowances and press seams open. Remove basting at slit. (b)

### Pleats

Working from right side of fabric, lay pleats in center front skirt panel in direction of arrows. Baste pleats. ©

---

## Step 7



#### Side front seams / In-seam pockets

Lay side front skirt panels on center front panel, right sides facing. Baste side front seams, matching seam numbers (1). Stitch, but leave pocket openings open between horizontal marks. Pocket openings remain basted. Tie off ends of seam. (a)

Finish edges of seam allowances and press seams open. (b)

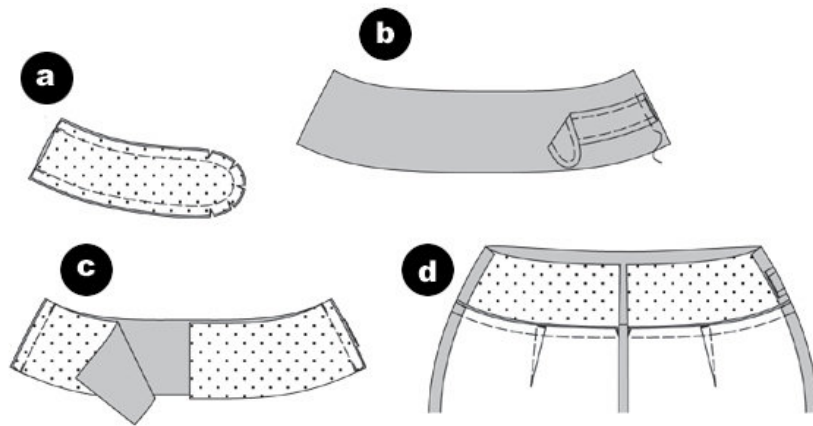
Finish edges of pocket lining piece. Pin to allowances of center front skirt panel, right sides facing, matching horizontal marks. Stitch, ending stitching at marked seam allowance on lower edge of pocket lining piece (arrows). Tie off ends of seams ©. Turn pocket-lining piece to inside (d).

Finish edges of pocket piece of skirt fabric. Baste to allowances of side front skirt panels, right sides facing, matching horizontal marks. Stitch. Stitch lower edges of pocket and pocket lining pieces together. Baste upper edges to skirt. Remove basting at pocket openings. (e)

#### Side seams

Lay skirt front on skirt back, right sides facing. Baste side seams, matching seam numbers (2), and stitch. Finish edges of seam allowances and press seams open.

## Step 8



### Tab

Lay tab pieces together, right sides facing. Baste edges together as illustrated and stitch. Trim seam allowances and clip curves. Turn tab right side out. Baste seamed edges and press. Topstitch 3/8" (1 cm) from seamed edges (a).

Baste tab to left side edge of interfaced front waistband piece, between horizontal marks (b).

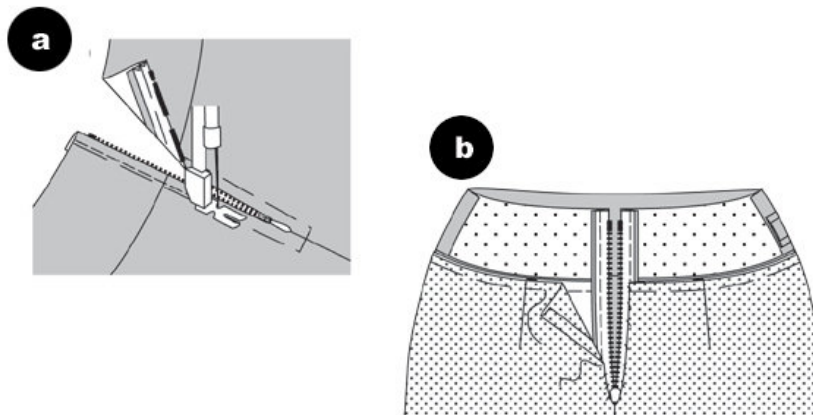
### Waistband / Side seams

Lay interfaced back waistband piece on interfaced front waistband piece, right sides facing. Stitch side seams, matching seam numbers (3) and catching tab in left side seam. Stitch side seams on waistband pieces with no interfacing in same manner. Press seams open. Finish lower edge of waistband. ©

### Attaching waistband

Baste interfaced waistband unit to upper edge of skirt, right sides facing, matching seam numbers (4) and matching side seams. Stitch. Press allowances toward waistband. (d)

## Step 9



### Zipper

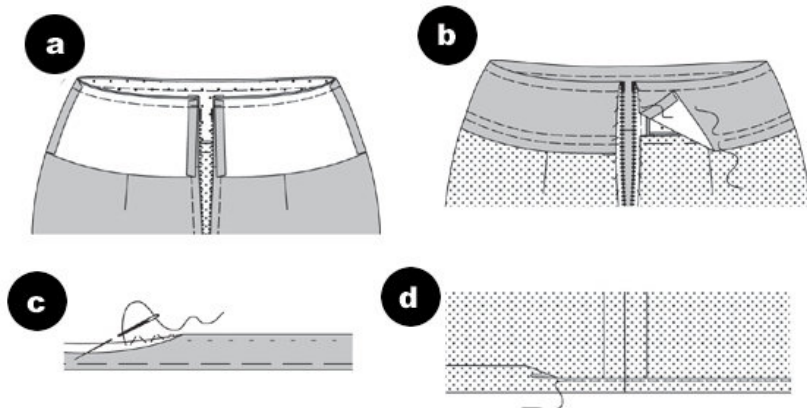
Baste zipper under slit edges so that zipper teeth are covered. Sew zipper in place by machine, using the zipper foot.

Sew lining as described for skirt (center front lining panel is mirror image of skirt). (a)

Pin lining to skirt, wrong sides facing, matching seams. Baste upper edges of skirt and lining together at waistband attachment seam. Sew lining to zipper tapes. (b)

---

## Step 10



### Doubling waistband

Pin waistband units together, right sides facing, matching side seams. Turn back edges of inner waistband layer under. Baste upper edges of waistband units together and stitch. Trim seam allowances, trimming diagonally across corners. (a)

Turn waistband right side out. Baste edges and press. Lay lower edge of inner waistband layer over attachment seam and baste. Sew back edges of inner waistband layer to zipper tapes by hand. Topstitch 3/8" (1 cm) from upper and lower edges of waistband and stitch along waistband attachment seam, thereby catching inner layer. (b)

Use **BUTTON** to sew tab to front waistband

### Hem

Finish lower edge of skirt. Turn hem to inside, baste and press. Sew hem in place loosely by hand. ©

### Lining hem

Press lower edge of lining to inside, 5/8" (1.5 cm) wide. Turn raw edge under and baste. Edge stitch hem in place. The lining will be 5/8" (1.5 cm) shorter than the skirt. (d)

---

**BurdaStyle**

Alexis