

## 04/2011 Striped dress

By: burda style magazine

<http://www.burdastyle.com/projects/042011-stripped-dress>

---



Striped dress

## Materials

widthwise striped fabric

---

### Step 1 — Preparation

Trace pattern pieces from pattern sheet. Follow lines and details for 115 A and 115 B. Glue pieces 1 + 1a and 2 + 2a together on the joining lines. Trace the pocket piece from piece 1 as a separate pattern piece — it is the same for all sizes.

View A: Also cut the facings (pieces 3 to 6) across width of fabric.

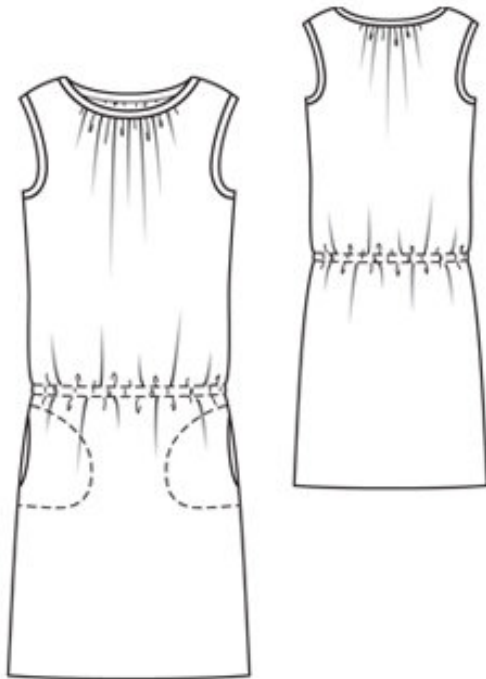
View B: The stitching lines at the slits on pieces 1 and 2 are marked for size 34. For sizes 36 — 44, re-mark stitching lines according to the size lines.

Seam and hem allowances:

Seams and edges 1.5 cm (5/8 in), hem view A 4 cm (15/8 ins), hem and slit edges view B 3.5 cm (11/2 ins).

---

### Step 2 — Cutting out



1 front, on a fold 1x

— pocket piece 4x

2 back, on a fold 1x

3 front neck facing, on a fold 1x

4 back neck facing, on a fold 1x

5 front armhole facing 2x

6 back armhole facing 2x

a) 2 bias strips for neck edge, 34  $\hat{=}$  35  $\hat{=}$  36  $\hat{=}$  36  $\hat{=}$  37  $\hat{=}$  37 cm (13 $\frac{1}{2}$   $\hat{=}$  13 $\frac{3}{4}$   $\hat{=}$  14 $\frac{1}{4}$   $\hat{=}$  14 $\frac{1}{4}$   $\hat{=}$  14 $\frac{1}{2}$   $\hat{=}$  14 $\frac{1}{2}$  ins) long, 5 cm (2 ins) wide (incl. allowances),

b) 2 bias strips for armholes, 46  $\hat{=}$  47  $\hat{=}$  48  $\hat{=}$  49  $\hat{=}$  50  $\hat{=}$  51 cm (18 $\frac{1}{8}$   $\hat{=}$  18 $\frac{1}{2}$   $\hat{=}$  19  $\hat{=}$  19 $\frac{1}{4}$   $\hat{=}$  19 $\frac{3}{4}$   $\hat{=}$  20 $\frac{1}{4}$  ins) long, 5 cm (2 ins) wide (incl. allowances),

c) facing strip for casing, 95  $\hat{=}$  99  $\hat{=}$  103  $\hat{=}$  107  $\hat{=}$  111  $\hat{=}$  115 cm (37 $\frac{1}{2}$   $\hat{=}$  39  $\hat{=}$  40 $\frac{3}{4}$   $\hat{=}$  42 $\frac{1}{4}$   $\hat{=}$  43 $\frac{3}{4}$   $\hat{=}$  45 $\frac{1}{4}$  ins) long, 4 cm (1 $\frac{5}{8}$  ins) wide (incl. allowances).

Interfacing: Iron to facing pieces.

---

### Step 3 — Neck edge

Gather front and back neck edges between asterisks. To do this, first machine baste 2 mm and 13 mm (a scant  $\frac{1}{8}$  in and a generous  $\frac{1}{2}$  in) from marked seam allowance. Gather fabric of front along gathering threads to 17  $\hat{=}$  17.5  $\hat{=}$  18  $\hat{=}$  18  $\hat{=}$  18.5  $\hat{=}$  19 cm (6 $\frac{3}{4}$   $\hat{=}$  7  $\hat{=}$  7 $\frac{1}{8}$   $\hat{=}$  7 $\frac{1}{8}$   $\hat{=}$  7 $\frac{1}{4}$   $\hat{=}$  7 $\frac{1}{2}$  ins) long and of back to 13  $\hat{=}$  13.5  $\hat{=}$  14  $\hat{=}$  14  $\hat{=}$  14.5  $\hat{=}$  15 cm (5 $\frac{1}{4}$   $\hat{=}$  5 $\frac{3}{8}$   $\hat{=}$  5 $\frac{1}{2}$   $\hat{=}$  5 $\frac{3}{4}$   $\hat{=}$  6 ins) long. Baste neck facings to respective edges, wrong sides together. Fold bias strips in half lengthwise and press, right side facing out. Pin folded strips to right side of edges, with fold edges on garment piece and matching long edges even with seam allowance. Stitch strips to front and back neck edges, 12 mm ( $\frac{1}{2}$  in) from long edges and along fold edge. Trim away 1 cm ( $\frac{3}{8}$  in) wide seam allowances neck edges.

---

### Step 4 — Shoulders

Stitch shoulder seams. Press allowances onto back. Sew ends of allowances to neck edge.

---

### Step 5 — Armholes

Stitch shoulder seams of armhole facings. Baste facings to armholes and stitch folded bias strips in place, as for neck edge.

---

### Step 6 — Side seams

Stitch side seams, but do not stitch across pocket openings. Press seams open. Sew top ends of allowances in place.

---

### Step 7 — In-seam pockets

Pin pocket pieces right sides together with seam allowances of pocket opening edges. Stitch pocket pieces in place, close to side seams and along seam line on pocket opening edges. Press pocket pieces forward and stitch to wrong side of front. To do this, lay paper pattern piece on the front and stitch along edge of pattern piece.

---

### Step 8 — Casing

Press long edges of facing strip under, 1 cm ( $\frac{3}{8}$  in) wide. Baste facing strip to inside of dress, over marked lines, turning in ends of strip. Work from right side to stitch facing strip as marked. Insert elastic, sew ends together to 72  $\hat{=}$  76  $\hat{=}$  80  $\hat{=}$  84  $\hat{=}$  88  $\hat{=}$  92 cm (28 $\frac{1}{2}$   $\hat{=}$  30  $\hat{=}$  31 $\frac{1}{2}$   $\hat{=}$  33  $\hat{=}$

343/4 — 361/4 ins).

---

## **Step 9 — Hem**

Press hem to inside. Sew by hand.

---

**BurdaStyle**

04/2011 Striped dress