

5/2010 Drop-waisted dress

By: burda style magazine

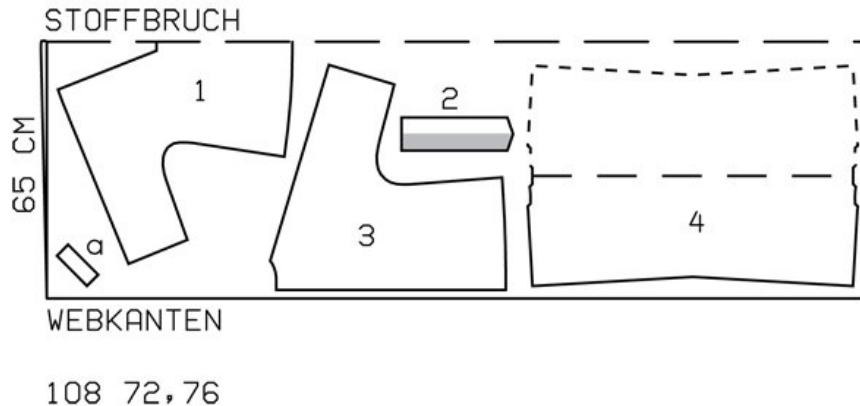
<http://www.burdastyle.com/projects/52010-drop-waisted-dress>

Drop-waisted dress burda style magazine patterns FAQ

Materials

Crpe satin

Step 1 — Preparation

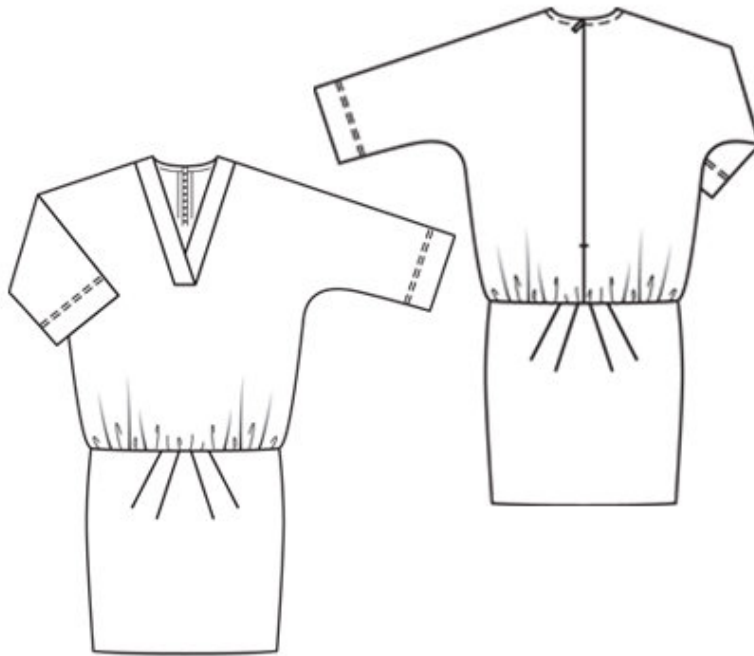


Trace the pattern pieces from the pattern sheet.

Seam and hem allowances:

Seams and edges 1.5 cm (5/8 in), -sleeve hems 5 cm (2 ins)

Step 2 — Cutting Out



1 front with integrated sleeve,

2 front neck band 1x

2 front neck band 2x

3 back with integrated sleeve 2x

4 skirt panel, on a fold 2x

a) 2 bias strips for back neck edge, each 12 cm (4 3/4 ins) long and 4 cm (1 5/8 ins) wide (incl. allowance).

Interfacing: See pattern layout. Iron a small piece of interfacing to wrong side of front, over bottom corners of neck edge.

Step 3 — Neck bands

Fold neck bands on fold line and press, wrong side facing in. Stitch lengthwise edges of each band together to neck edge, from seam number 1 to corner. Clip seam allowances of front diagonally into corners. Press seam allowances of band joining seams onto front. Pin right band to left band, matching centre fronts. -Stitch bottom edges of bands together to front. Press seam allowances down.

Step 4 — Shoulder and sleeve seams

Stitch shoulder seams and top sleeve seams as continuous seams. Seam allowances of back pieces extend at neck edge. Stitch side seams and underneath sleeve seams. Trim seam allowances to 7 mm (1/4 in) wide, neaten together and press onto back.

Step 5 — Sleeve hems

Press sleeve hem allowances to in-side. Stitch 4.7 cm and 4 cm (a scant 2 ins and 15/8 ins) wide.

Step 6 — Zipper

Sew invisible zip to back opening edges. Stitch centre back seam from lower edge to zip.

Step 7 — Bias strips

Fold bias strips for back neck edge lengthwise and press. Pin each doubled -bias strip to neck edge so that fold edge of strip lies on garment -piece, 1 cm (3/8 in) past seam line. Stitch along neck edges. Trim -seam allowances. Lay bias strips up and turn ends in. Turn bias strips to inside and press edges. Topstitch 7 mm (1/4 in) from neck edges.

Step 8 — Skirt panels

Stitch darts in skirt panels and press toward centre. Stitch side -seams of skirt. Press seam allowances open. Fold skirt on fold line, wrong side -facing in (do not press). Baste upper edges together.

Step 9 — Stitching skirt to bodice

â— Gather lower edge of bodice to fit skirt panel. Stitch skirt to bodice. Lay seam allowances up.

BurdaStyle

5/2010 Drop-waisted dress