

3/2011 Strapless, Tea Length Wedding Dress

By: burda style magazine

<http://www.burdastyle.com/projects/32011-strapless-tea-length-wedding-dress>



Strapless, Tea Length Wedding Dress burda style magazine patterns FAQ Please Note: This pattern only contains pieces for the bodice of the garment. The bottom portion is self-drafted, with instructions given in the overall project instructions.

Materials

Organza, taffeta and tulle

Step 1 — Preparation

Trace the pattern pieces from the pattern sheet.

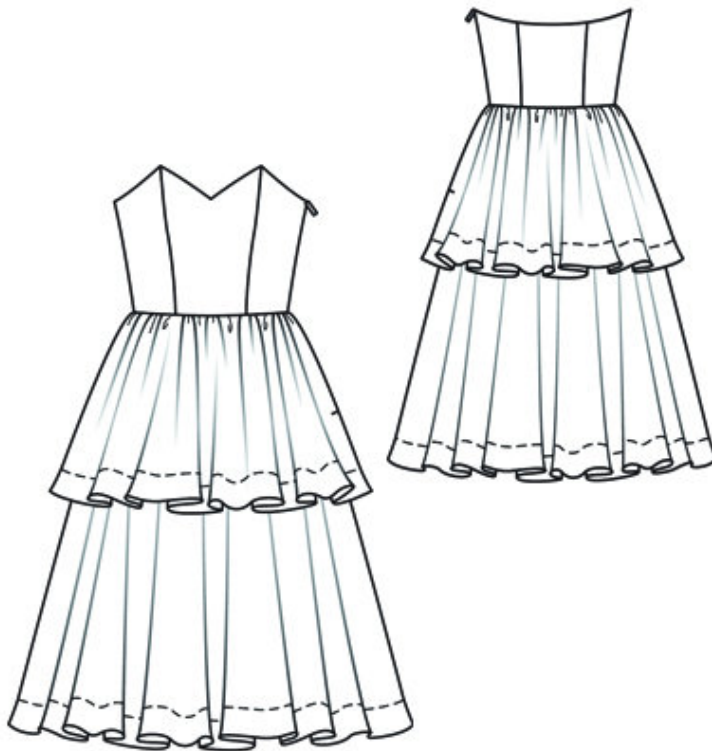
Diagram:

Follow the diagram to make a full-sized pattern piece for the upper skirt tier (a) and the lower skirt tier (b) as follows: On a large sheet of wrapping paper — the upper edge and the right edge must form a right angle — stretch a thread from the upper right corner to mark the radius[®] for the upper edge of the skirt tier and the radius (R1) for the hem edge. Or measure the length of the overskirt panel down from the upper edge at several points and then connect the points in an even curve to mark the hem edge.

Seam and hem allowances:

Seams and edges 1.5 cm (5/8 in), hems on skirt and skirt tiers 6 cm (23/8 ins), no allowance on lower edges of tulle skirt panels.

Step 2 — Cutting Out



Embroidered organza:

1centre front, on a fold 1x

2side front 2x

3centre back, on a fold 1x

4side back 2x

a) upper skirt tier, according to diagram, 2x, on a fold,

b) lower skirt tier, according to diagram, 2x, on a fold.

Taffeta:

1 centre front, on a fold 1x

2 side front 2x

3 centre back, on a fold 1x

4 side back 2x

c) 2 skirt panels, 137 cm (54 ins) wide, 78 cm (30³/₄ ins) long.

Tulle:

c) 2 skirt panels, 137 cm (54 ins) wide, 78 cm (30³/₄ ins) long.

Lining: pieces 1 to 4 and also piece c.

Interfacing: See pattern layout. Also interface bodice lining.

Step 3 — Basting front and back organza and taffeta pieces

Baste front and back organza pieces to corresponding taffeta pieces, with wrong side facing right side. Treat these pieces as one layer of fabric from now on

Step 4 — Stitch front and back section seams and right side seam of bodice

Stitch front and back section seams and right side seam of bodice. Press seam allowances open.

Step 5 — Stitch side seams of skirt units

Stitch side seams of skirt units, leaving 25 cm (10 ins) open at top of left side seam on upper skirt tier. Trim allowances evenly, to 5 mm (3/16 in) wide, and press onto back. Press hem allowance of skirt tiers to inside and baste, laying fabric in small folds, as needed. Topstitch 5 cm (3/16 in) from hem edge. Trim allowance on inside, close to stitching.

Step 6 — Stitch side seams of tulle skirt

Stitch side seams of tulle skirt, leaving 25 cm (10 ins) open at top of left seam. Trim seam allowances and press onto back.

Step 7 — Stitch side seams of taffeta skirt

Stitch side seams of taffeta skirt, leaving 25 cm (10 ins) open at top of left seam. Neaten seam allowances and press open. Press hem allowance to inside. Stitch 5 cm (2 ins) from lower edge, catching hem.

Step 8 — Stitch lower skirt tier to tulle skirt

Gather upper edge of lower skirt tier to match edge of tulle skirt. Stitch lower skirt tier to tulle skirt, 50 cm (19³/₄ ins) above lower edge, with wrong side facing right side.

Step 9 — Basting tulle skirt to upper edge of taffeta skirt and upper skirt tier to upper edge of taffeta skirt

Gather upper edges of taffeta skirt, tulle skirt, and upper skirt tier to match edge of bodice. Baste tulle skirt to upper edge of taffeta skirt and baste upper skirt tier to upper edge of taffeta skirt, over tulle skirt, with right sides of all layers facing out.

Step 10 — Stitch skirt to bodice

Stitch skirt to bodice. Press seam allowances up.

Step 11 — Baste side slit edges of upper skirt tier, tulle skirt, and taffeta skirt together

Baste side slit edges of upper skirt tier, tulle skirt, and taffeta skirt together, from skirt attachment seam down, 18 cm (7 ins) long and mark end of slit for zip. Sew invisible zip to left side edges, as far as marking. Now clip seam allowances of upper skirt tier at end of zip seams and stitch remaining side seam, as far as zip. Then clip tulle skirt as instructed and stitch remainder of seam. Finally, stitch seam of taffeta skirt — there is no need to clip the taffeta skirt.

Step 12 — Stitch seams of skirt lining

Stitch seams of skirt lining, leaving slit for zip open 2 cm (3/4 in) longer than on outer fabric. Press hem allowance to inside and stitch hem 5 cm (2 ins) from edge. Place skirt lining inside dress, with wrong sides facing, and stitch to allowances of skirt joining seam, stitching as far as possible at slit.

Step 13 — Forming case for boning

Stitch section seams and right side seam of bodice lining, stitching side seam as mirror image of side seam on outer fabric. Press allowances of section seams onto centre pieces. Press side seam allowances forward. Stitch 8 mm (a generous 1/4 in) from each seam, catching seam allowances and thereby forming casing for boning.

BurdaStyle

3/2011 Strapless, Tea Length Wedding Dress