

07/2011 Dress and pelerine

By: burda style magazine

<http://www.burdastyle.com/projects/072011-dress-and-pelerine>



Dress and pelerine burda style magazine patterns FAQ</a

Materials

Crpe satin

Step 1 — Preparation

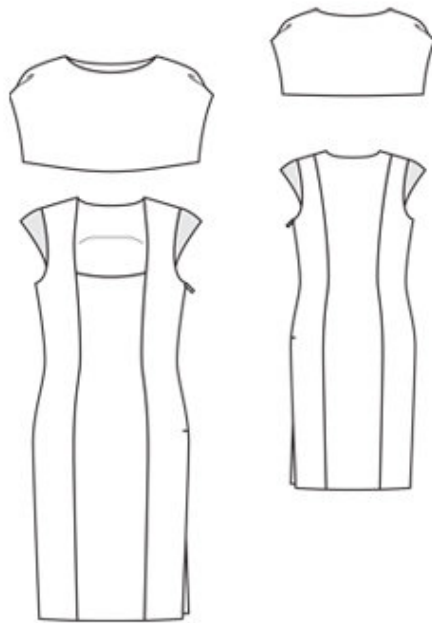
Trace the pattern pieces from the pattern sheet. Lengthen pieces 2, 3 and 4 as indicated.

The pleats on pieces 9 and 10 are marked for size 36. For the other sizes, mark the pleats accordingly.

Seam and hem allowances:

Seams and edges 1.5 cm (5/8 in), hem 4 cm (15/8 ins), slit edges 3 cm (1 1/4 ins).

Step 2 — Cutting out



Dress:

â— 1centre front, on a fold 1x

â— 2side front 2x

â— 3centre back, on a fold 1x

â— 4side back 2x

â— 5front armhole band 4x

â— 6back armhole band 4x

â— 7front facing, on a fold 1x

â— 8back facing, on a fold 1x

Pelerine:

â— 9front, on a fold 2x

10back, on a fold 2x

Use the shiny side of the crpe satin as the right side of the armhole bands. For all remaining pieces, use the matte side as the right side.

Interfacing: See pattern layout.

Step 3 — Dress

Stitch front section seams, beginning stitching on upper edge, exactly at marking. Stitch back section seams. Stitch shoulder seams on dress and on facing. Press seams open.

Step 4 — Shoulders

Stitch shoulder seams on interfaced and non-interfaced armhole bands. Stitch pairs of armhole bands together, right sides facing, leaving joining edges open. Trim allowances. Turn armhole bands right side out and press. Baste edges of bands together to edges of armholes, from seam number 6 to seam number 7. Stitch armhole bands in place.

Step 5 — Facing

Pin facing right sides together with neck edge. On centre front, stitch along neck edge, not catching section seam allowances of side front pieces. On side front and centre back pieces, stitch along neck edge, beginning and ending exactly at markings. Trim seam allowances. Clip allowance of facing into corners. Turn facing up and stitch to seam allowances, close to seam. Turn facing to inside and press edge.

Step 6 — Armholes

At side seam edges, turn under armhole edges of dress and facing and hold with a single straight pin. Reach between dress and facing to grasp the edges. Remove the pin but keep hold of the edges. Stitch edges right sides together, from each side seam edge, as far as possible, catching armhole bands. Push edges back in place again. Sew open edges of facing to joining seams of armhole bands.

Step 7 — Zip

Stitch right side seam and seam of facing as continuous seam. Sew invisible zip to left side opening edges, beginning at the armhole. Stitch left side seam from side slit to zip. Sew facings to zip tapes and to seams.

Step 8 — Hem

Press hem allowance to inside and sew in place by hand. Press allowances on slit edges to inside and sew in place by hand.

Step 9 — Pelerine

Pin front pieces together, right sides facing, and pin back pieces together, right sides facing. Stitch along side and lower edges, beginning and ending stitching approx. 2 cm (3/4 in) before shoulder seam edges and leaving approx. 10 cm (4 ins) open on lower back edge. Stitch along neck edge, beginning and ending stitching approx. 2 cm (3/4 in) before shoulder seam edges. Trim allowances. Turn front and back right side out. Stitch shoulder seams of outer layers. Then first pull out one shoulder seam through opening in seam. Stitch shoulder seam of inside layer. Press seam open. This will be easier if you slip the handle of a wooden spoon under the seam to press the allowances open. Stitch the remaining neck and side edges closed. Push the shoulder seam back in place again. Stitch the second shoulder seam in same manner. Sew seam opening

on lower back edge closed. Press edges. Lay front on back with outer pieces lying together and with shoulder seams lying on fold. Stitch pleats from side edges to arrow markings. Fold pleats in direction of arrows and press.

BurdaStyle

07/2011 Dress and pelerine