

Alden

By: burdastyle

<http://www.burdastyle.com/projects/alden>



The Alden Raincoat is a variation of the Talea coat. It uses the same pattern, but with only one addition, the classic raincoat yoke! Make yours in a bubblegum brightly coated vinyl like this to ensure your spirit is soaring despite the storm of cats and dogs! We made this variation and scanned in the pattern ourselves, with hopes that you all might be inspired to do the same with your pattern variations! So try this one, or impress

us by posting your own pattern variation!

Materials

To make this pattern, you must download the Talea 9301 coat pattern in addition to the yoke pattern BS-024 supplied with this Alden coat.

Step 1

Pattern Pieces (TALEA 9301)

- 1 Front piece, Middle 2x
 - 2 Front piece, Side 2x
 - 3 Back piece, Middle 2x
 - 4 Back piece, Side 2x
 - 5 Yoke 2x
 - 6 Sleeve, front 2x
 - 7 Sleeve, back 2x
 - 8 Collar in selvage 2x
 - 9 Collar Lapel in selvage 2x
 - 10 Trimming in back 1x
 - 11 Pocket 2x
 - 12 Flap 4x
 - 13 Latch (Back Piece) 4x
 - 14 Upper Latch 4x *NOT NEEDED
 - 15 Shoulder Latch 4x *NOT NEEDED
 - 16 Sleeve Latch 4x
- PATTERN (BS-024 ALDEN)
- Front Yoke 2x
 - Side back Yoke 2x
 - Center back Yoke 2x

Sizes 2 to 12 (EU 34 to 44)

Length in Back: 37 ½" (95 cm)

Fabric needed

Vinyl coated fabric, raincoat fabric, medium to heavy weight: 59" (150 cm) wide

Sizes 2 to 6 (EU 34 to 38): 3 1/3 yards (300 cm) plus extra 3/4 yard (69 cm) for additional yoke

Sizes 8 to 12 (EU 40 to 44): 3 1/2 yards (320 cm) plus extra 3/4 yard (69 cm) for additional yoke

Lining (Sleeves):

140 cm (about 55 inches) wide, 070 cm (about 27.5 inches) long for all sizes

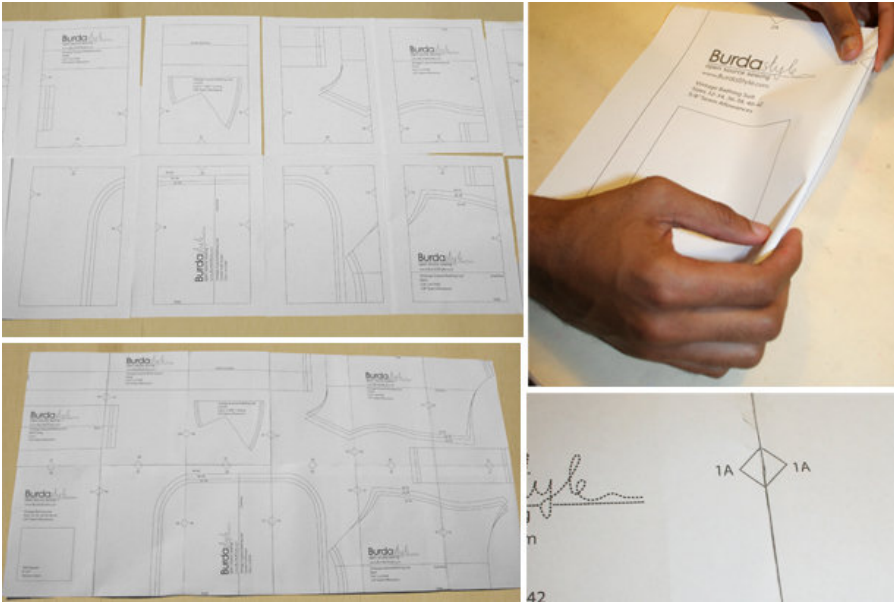
4 large push buttons

5 large and 2 small buttons, sewing thread; firm, thin cardboard for use as stencil

2 loops, together 54 cm (about 21.25 inches) long, 4 cm (1.57 inches) wide (Including seam allowance)

NOTE! You will use all the pieces of the Talea 9301 pattern, except the latches (where we noted above). The only difference with this coat and the new raincoat is an additional yoke over top the front and back of the coat, so you will also have to use the additional BS-024 pattern that is supplied.

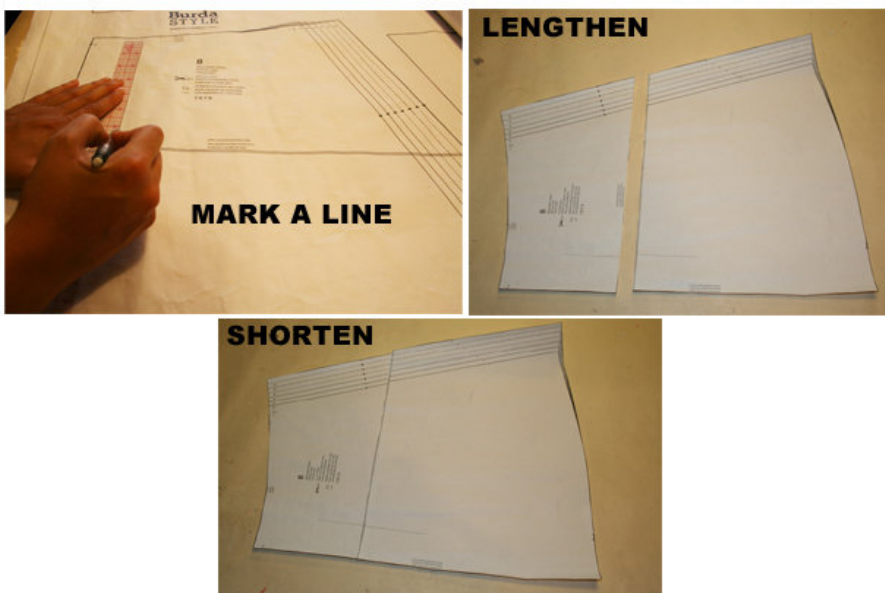
Step 2



The patterns can be printed out at the copy shop. If you decide to print them at home, follow the instructions: Paper cut for ANSI A (German DIN A4) prints:

The patterns are printed out with a thin frame. Wait until all sheets are printed out. Arrange the sheets so that they fit together (see additional page with the overview of the prints). Fold the single sheets on the upper and right edge along the thin frame lines. Begin with the left lower sheet and then tape the frame lines together precisely.

Step 3



ADJUST PATTERN SIZES

Select your size according to the Burda-dimension table: dresses, blouses, jackets and coats according to the bust size, trousers and skirts according to the hip width. Change the pattern to fit your measurements if they

deviate from the Burda-size chart. Cut out the pattern according to your size.
Refer to our “ Adjust patterns for mixed sizes” technique

LENGTHENING OR SHORTENING THE PATTERN PIECES

Our pattern is calculated for a height of 5’ 6” (168 cm). If you are taller or shorter, you can adjust the pattern pieces along the lines marked “lengthen or shorten here”. This way the proper fit is maintained. Always adjust all pattern pieces along the same line to the same degree.

How to lengthen and shorten pattern pieces:

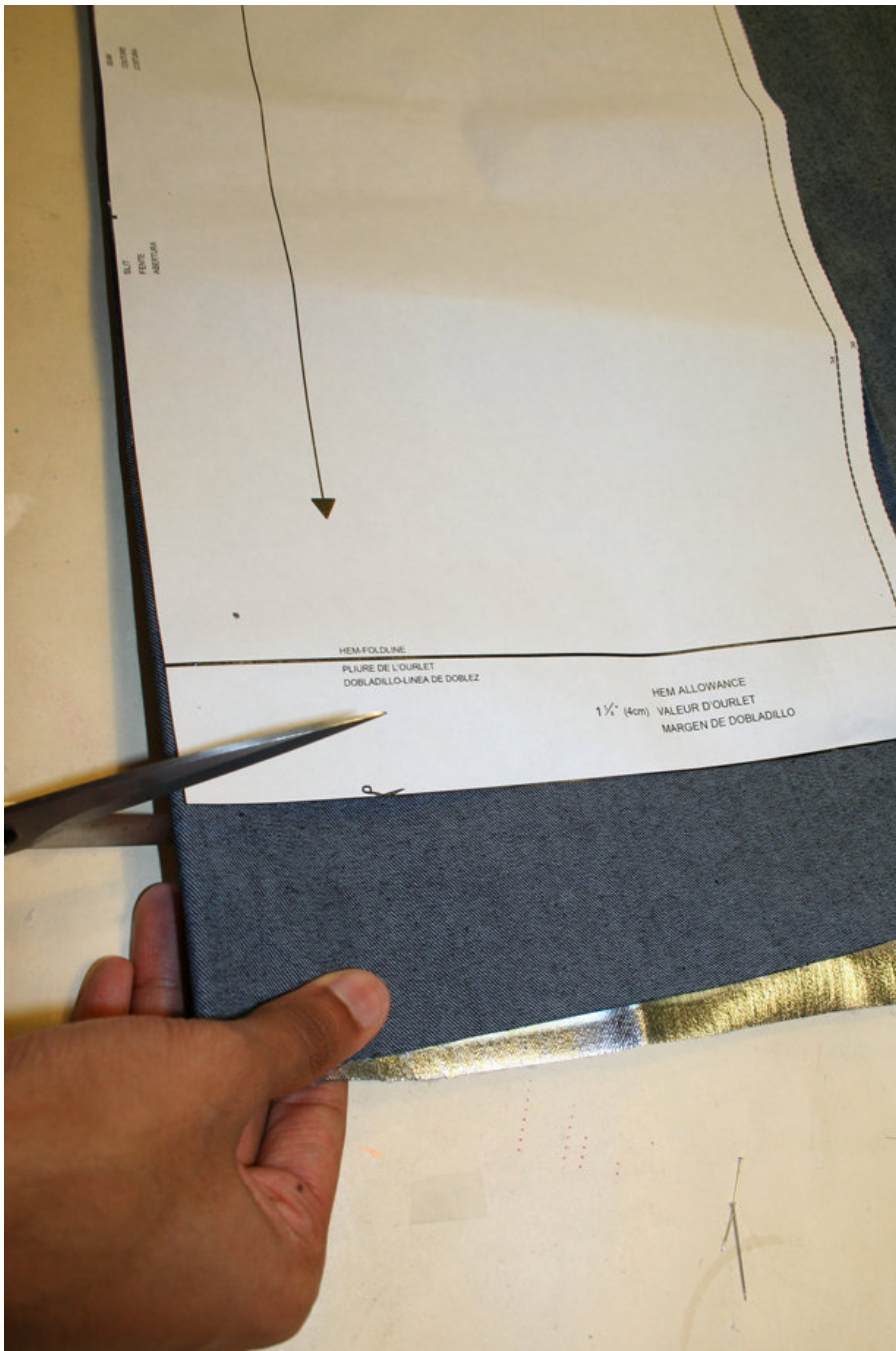
Cut the pattern pieces along the marked lines

To lengthen, slide the two halves of the pattern piece as far apart as necessary.

To shorten, overlap the two halves of the pattern piece as far as necessary. Blend the side edges.

The lines marked for the loop and the cross-stitches for the latch in part 5 are only depicted for a size 34. For other sizes, adjust the marking according to the marked lines of the size you wish to sew.

Step 4



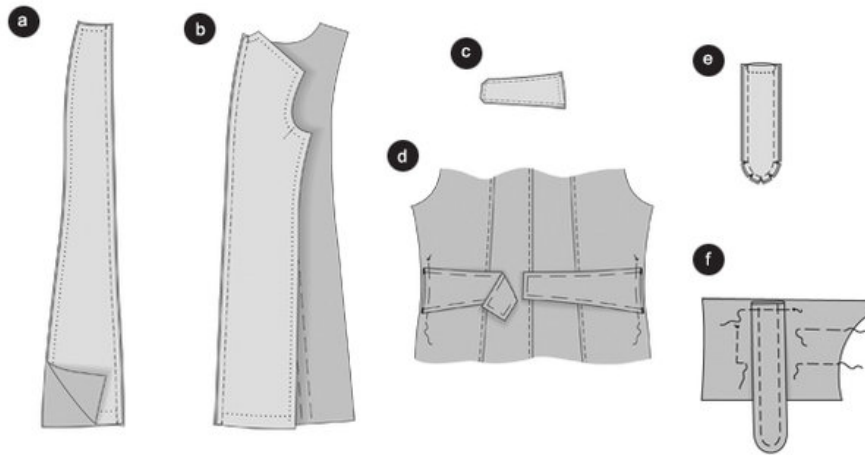
CUTTING OUT

FOLD () means: Cut on the fold, the fold being the center of the pattern piece, but never a cut edge or seam. The piece should be cut double, with the fold line forming the center line. Pattern pieces that are outlined with a broken line in the cutting diagrams are to be placed face down on the fabric. The cutting diagrams on the pattern sheet show how the pattern pieces should be placed on the fabric.

The cutting diagrams show the placement of the pattern on the fabric.

For a single layer of fabric, the pattern pieces are pinned to the right side. For double layers of fabric, the right sides are facing and the pattern pieces are pinned to the wrong side. The pattern pieces that are shown extending over the fold of the fabric in the cutting diagram should be cut last from a single layer of fabric .

Step 7



Coat

Middle Seam, Back

Place the back middle pieces onto each other, right sides facing. Pin middle seam. Stitch. (a) Iron the seam allowance into the left. Stitch the left back piece along the seam, allowing 1/2" (about 0.59 inches)

Princess Seam

Place the side front pieces right sides facing onto the middle front pieces, pin the front dividing seams. Stitch. (b) Place the side back pieces right sides facing onto the middle back piece, pin back princess seam line. Stitch. Iron the seam allowance into the side front and back pieces. Stitch the side front and back pieces along the seams, allowing 1/2" (1.27 cm).

Place two BACK latch pieces each right sides facing and stitch them together. Leave the edge open at the base. Trim seam allowances. ©

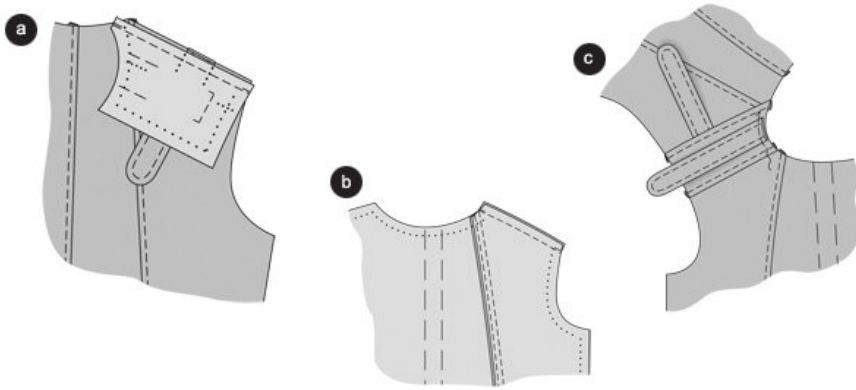
Turn the latch, pin the edges, iron and stitch, allowing 1/2" (1.27 cm). Place the latch in between the horizontal lines on the back, pin the ends of the latches to the back piece. (d)

Remaining Latches *YOU DO NOT NEED TO FOLLOW THESE STEPS

Place two corresponding latch pieces right sides facing and stitch them together, leaving the straight, narrow end open. Trim seam allowances. (e) Turn latch. Pin edges, iron and stitch, allowing 1/2" (1.27 cm).

Place the upper latches (part 14) onto the yokes, between the horizontal lines, pin onto the seam allowances. (f)

Step 9



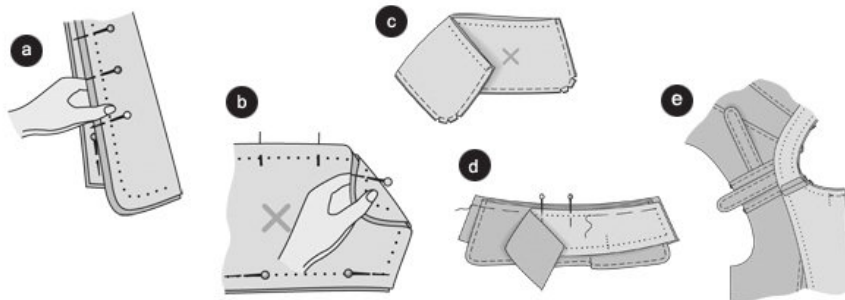
Stitching the Yokes (from original 9301 Talea pattern)

Place the yoke pieces right sides facing onto the back piece. Stitch, catching both seams of back piece and the yoke you basted in place. (a) Iron the seam allowance into the yokes. Place front pieces right sides facing onto the yokes, pin the front base seams of the yokes, stitch, catching both seams of front piece and front yoke. (b) Iron the seam allowance into the yokes. Stitch yokes along the seams, allowing 1.5 cm (about 0.59 inches).

Shoulder Latch *THIS STEP IS NOT NEEDED

Place (Part 15) between the horizontal lines onto the yokes, pin to the seam allowance of the neck line ©

Step 10



Collar with Lapel

Using chalk, mark a cross onto the wrong side of the bottom collar. Place collar parts right sides facing, pin the base edges onto each other. Hold the lower collar folded to make up for the larger width of the upper collar. Pin the outer horizontal edges of the collar onto each other, about 5 cm away from the round collar edges (1.96 inches). (a)

Then hold the collar edges folded, pin the remaining outer edges onto another (b)

From the bottom collar, stitch the outer collar edges onto another. Trim seam allowances ©. Turn collar. Iron the edges of the bottom collar so that the seam is visible close to the selvage. Stitch collar, allowing 1.2 cm (about 0.47 inches).

Place collar right sides facing onto a collar lapel piece, with the seam allowances of the front lapel end overlapping the collar. Pin collar. Place the other lapel piece right sides facing, above the collar, onto the lapel piece that has already been pinned. Pin front and upper lapel edges. Stitch, stopping at the marked seam of the front lapel pieces. (d) The collar is placed in between the other two pieces at the upper lapel

edge. Trim seam allowances. Turn lapel, pin edges and iron.

Trimming, front edges

Pin the shoulder edges of the back trimming right sides facing onto the shoulder edges of the cut front trimmings. Stitch. Fold apart the seam allowance and iron. Fold the cut trimming at the wrap line toward the right side of the coat. Pin the upper edges of the selvage onto the neckline; stop at the marking for the base of the collar. Stitch. **DO NOT** turn the trimming inside.

Step 5

SEAM AND HEMLINE ALLOWANCES are included on an average:

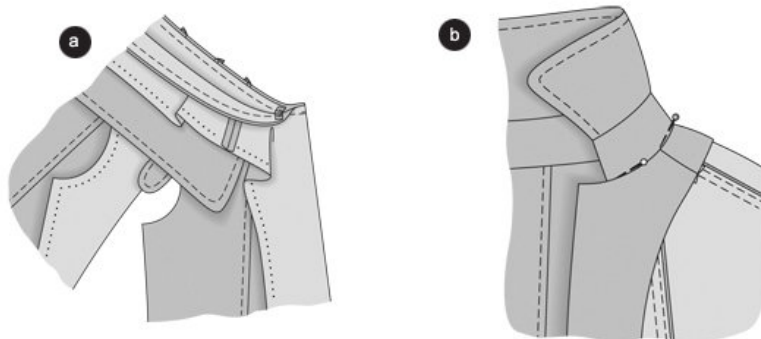
1 5/8" 8" (4 cm) for hem, 5/8" (1.5 cm) for all edges and stitches. Using BURDA copying paper, transfer the lines and signs of the pattern onto the wrong side of the fabric. Instructions can be found in the packaging.

Sewing

While sewing, the right sides of the fabric are facing.

Transfer all lines of the pattern onto the right side of the fabric using basting stitches.

Step 11



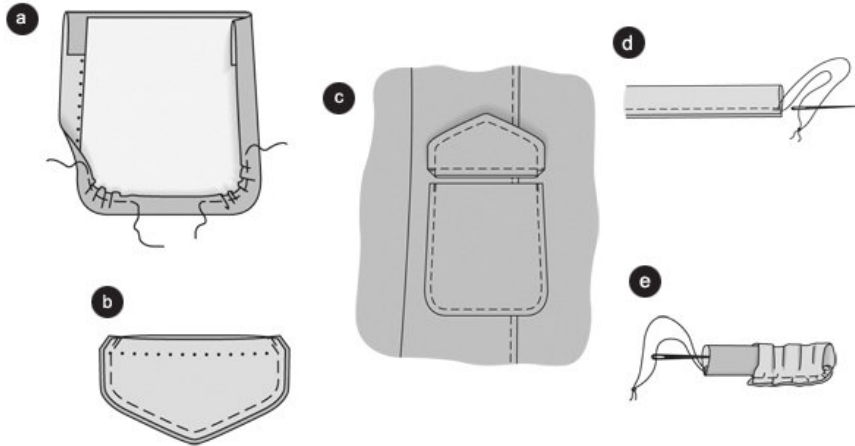
Attaching the collar

Push the collar between the coat and the trimming, so that the bottom collar rests on the coat. The narrow ends of the collar meet with the markings for the base of the collar. Pin the bottom collar to the neckline and the upper collar to the trimming. Stitch. Secure the beginning and end of the seam with reverse stitches (a). Trim seam allowances, fold apart and iron. Turn trimming inside. Iron edges. Pin the collar base seams onto each other (b). At the back of the neckline, place the trimming on top one more time; sow the seam allowances onto each other close to the seam.

Side seams

Place the front parts right sides facing onto the back part, pin the side seams, stitch. Fold apart the seam allowances and iron.

Step 12



Pockets

Fold over and iron the trimming of the upper pocket edges. Fold and iron seam allowances of the side and bottom pocket edges. Prior to that, sow along the rounded edges of the seam allowance with small stitches. Fold the seam allowances over and iron them. To make this easier, use a stencil: Transfer the pattern piece onto thin cardboard. Cut the stencil without the seam allowance and place it onto the left side of the pocket. Fold over and iron the seam allowances along the edge of the stencil. (a) Place the pockets onto the front pieces at the pocket lines. Stitch, allowing 1.2 cm (about 0.47 inches).

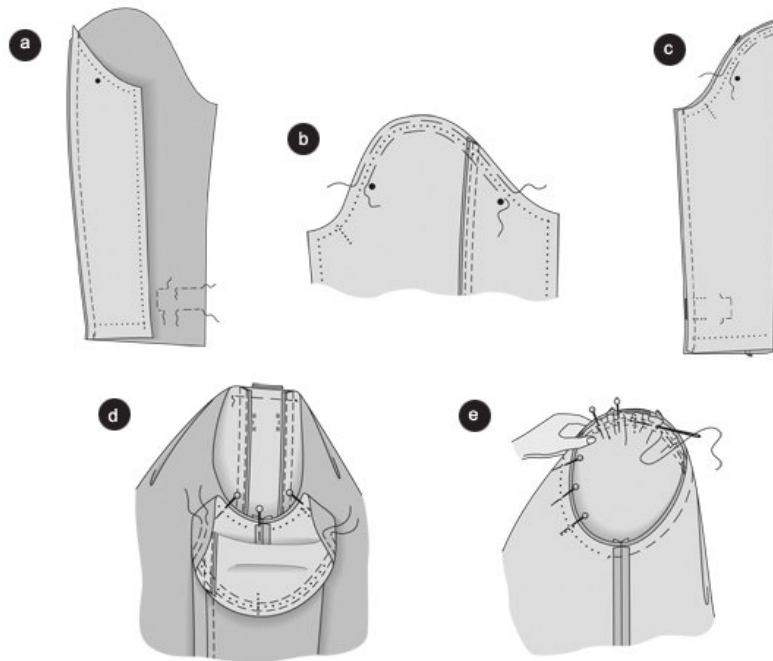
Flaps

Place two flap pieces onto each other, right sides facing, and stitch. On the seam allowance of the base edge, stitch diagonally towards the inside at the upper ends, leave the base edge open. Trim seam allowances neatly. (b) Turn flaps. Pin edges, iron, and stitch allowing 1.2 cm (about 0.47 inches). ©

Loops *ONLY FOR SLEEVE LATCHES

Fold pieces of fabric in half lengthwise, right side inside. Stitch 1.2 cm (about 0.47 inches) from the selvage. To turn, cut the thread not too short on one end. Trim the seam allowances neatly. Thread the cut thread into a darning needle and tie tightly. (d) Pull the needle through the fabric tunnel with the eye facing forward. (e) Iron the fabric, cut into six pieces of equal length. *YOU ONLY NEED TWO! Pin the loops onto the sleeves at the marked lines, fold ends over and sew.

Step 13



Sleeves

Place back sleeve pieces right sides facing onto the front sleeve pieces. Stitch. (a) Fold over and iron the seam allowances into the front sleeve pieces. Stitch front sleeve pieces along the seam, allowing 1.5 cm (about 0.59 inches). To maintain the shape of the sleeve, stitch from dot symbol to dot symbol on both sides of the marked seam line with large stitches. Do not tighten the bottom thread yet. (b) Place the bottom latches between the horizontal lines onto the front sleeve pieces, pin to the seam allowances. Fold sleeves lengthwise, right side inside. Pin the bottom seams of the sleeves. Stitch. © Fold apart and iron the seam allowances. Fold over and iron the hem allowance to the inside and loosely sew by hand.

Insert Sleeves

Pin sleeves right sides facing, first on the bottom of the arm line, the bottom sleeve and sidelines and the horizontal line 11 meet. Do not restrain the arm line or sleeves. (d) Then stick the shoulder marking (horizontal line) of the round sleeve base to the shoulder marking of the yokes. Now, tighten the bottom thread of the stitching lines until the sleeves fit in the arm line. Pin sleeves, distributing the width equally. (e) Try on the coat and test the positioning of the sleeves. Stitch in the sleeve going from the sleeve side, starting above the side seam. To make sure that the basting thread can be ripped easily, stitch close to the basting stitches. Place the seam allowances of the coat's arm line into the sleeves.

Sleeve lining

Stitch the seams of the lining sleeves. Fold apart and iron the seam allowances. Pull lining into the sleeve, inside out. Sew the lining, folded over, onto the arm line base. Sew the bottom edge of the lining onto the hem allowance.

Hem

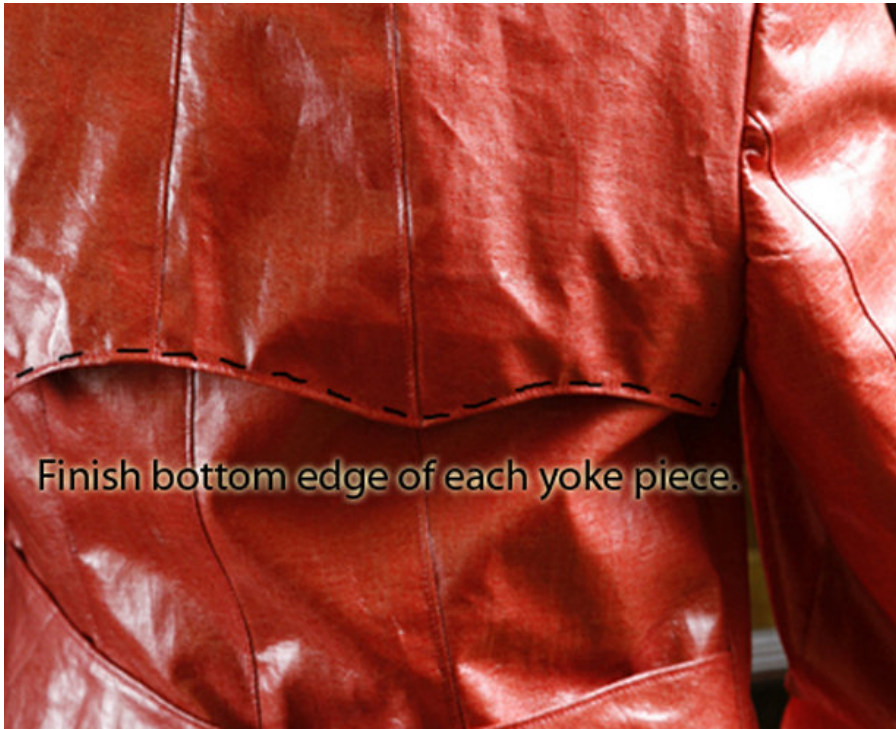
Pull apart the batching stitches at the front edges. Once again, place the trimmings flat, facing to the front. Fold over and iron the seam allowance and stitch from the right, allowing 1 1/4" (3 cm). Fold the trimmings to the inside, sew to the hem allowance. Stitch the front edges and the upper edges continuously until you reach the base of the collar, allowing 1/2" (1.2cm).

Push Buttons, Buttons

Sew the upper parts of the four push buttons onto the trimming of the right front edge, 1 $\frac{1}{4}$ " (3 cm) from both the front and the upper edge. Space between the push buttons: 5" (13 cm). Sew the bottom part of the push buttons accordingly onto the right side of the left front edge.

Sew the large buttons above the spot where the push-buttons were sewn, on the right side of the right front edge, and onto the left back latch, make sure to catch in the right back latch. Sew the smaller buttons onto the arm latches, sewing the latches onto the sleeves.

Step 6



Once you have cut out all pieces of the yoke: Front, Center Back, and Side Back (BS-024 pattern), you will sew the back yoke. Make a note that each piece includes $\frac{5}{8}$ " (1.5 cm) seam allowance.

First sew the Center back pieces together with the side back pieces, creating one full back yoke. Next, you will finish the bottom edge of the yoke pieces (front and back), since this will stand away from the body of the coat. Finish by turning in along yoke edge $\frac{1}{4}$ " twice (1.65 cm), and topstitch along edge.

Step 8



To insert the front yoke piece from step 6, you will end up sewing it, wrong side of yoke onto the right side of the coat, sandwiched in between the collar stand/neckline, yoke piece from 9301 pattern, and armhole as the picture shows. For the back yoke piece from step 6, it will be inserted between the yoke piece from 9301 pattern, collar stand/neckline, and armhole.

To prepare, pin these yoke pieces in place, then baste, onto the front and back before sewing the 9301 yoke piece as indicated in the next step.

BurdaStyle

Alden