

# Andre

By: burdastyle

<http://www.burdastyle.com/projects/andre>

---



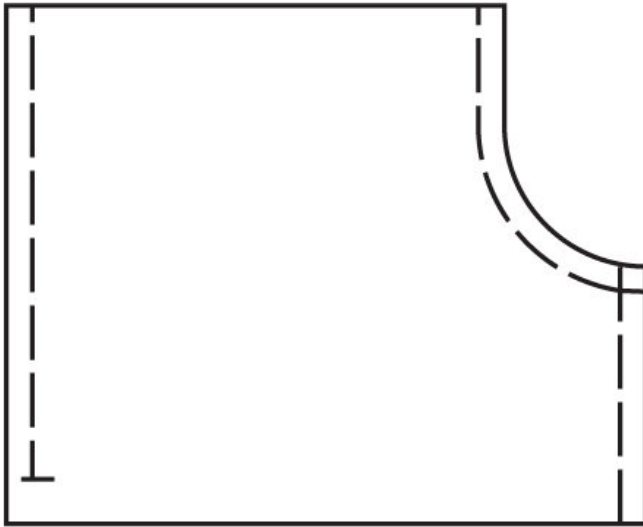
Oh, it is HOT HOT HOT this time of year, so we thought we'd throw some more hot weather fun your way.

## Materials

yard self, yard netting, drawstring, elastic for waistband and elastic cord

---

## Step 1



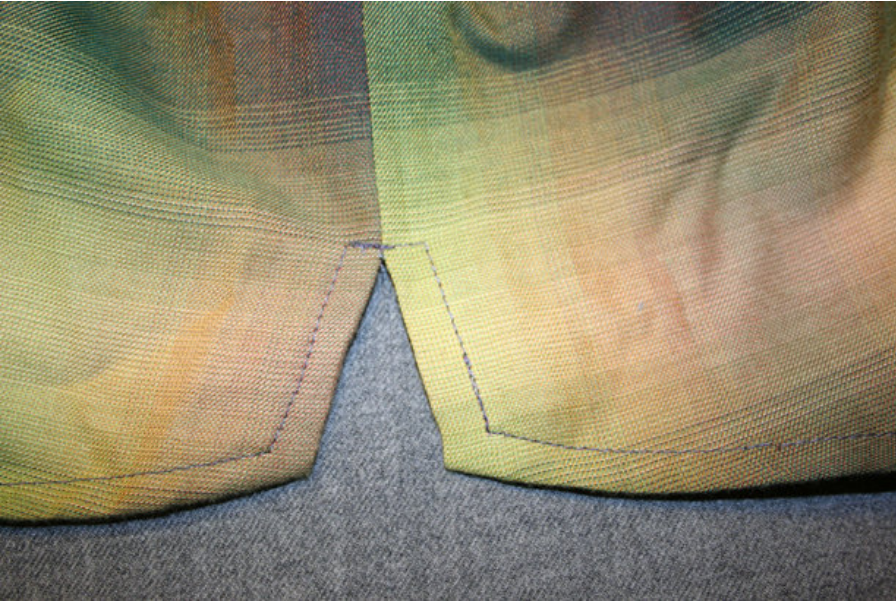
Cut out pattern pieces to BS-004 Men's Bathing Trunks according to wearer's size. All seam allowances are  $\frac{5}{8}$ " .

**Side Seams & Inseams.** Lay front trunk pieces right sides together with back trunk pieces. Sew side seams, stopping at the slit notch, and backtacking. Sew inseams. Finish edges with either a zig-zag stitch or overlock, and press apart.

**Center Seam**Position one trunk leg inside the other, right sides facing. Pin center seam, front to back, and sew.

---

## Step 2



Turn hem at  $1/4''$  , then  $3/8''$  , thereby enclosing the raw edge. Press, and give a topstitch all the way around the leg opening, and around the slit at the side seam.

---

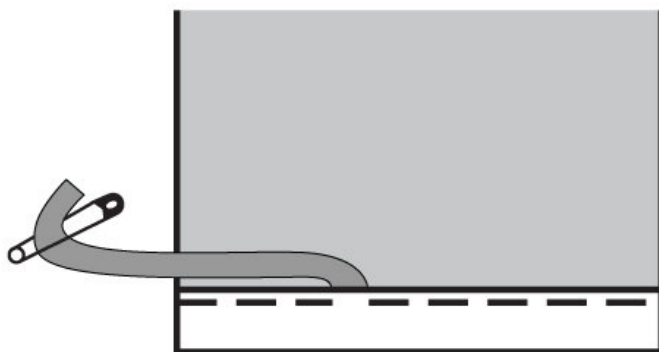
### Step 3



Drawstring and Buttonholes. If you are making your drawstring from the self fabric, do so now. You can reference our ' Sewing Straps' Technique. Make two small button-holes at center front as according to the pattern markings.

---

## Step 4

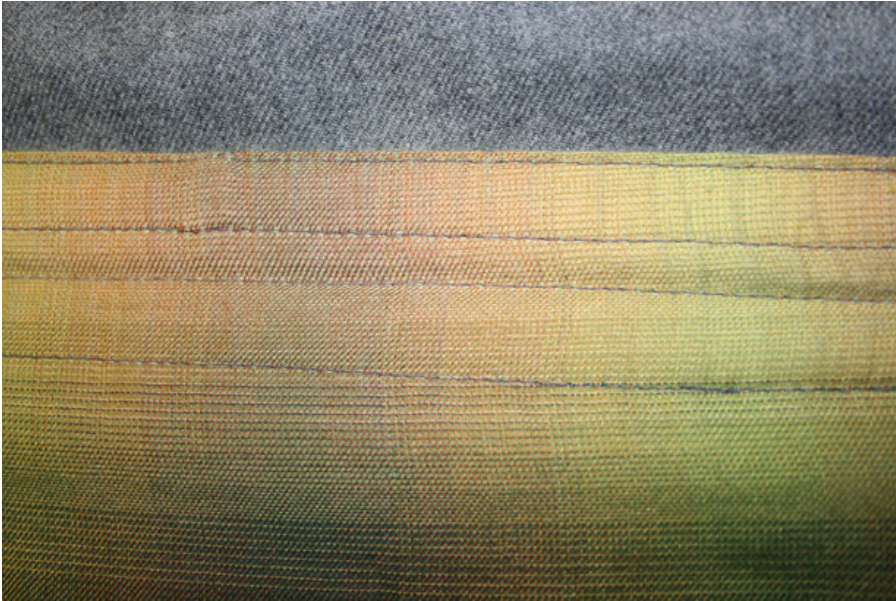


Lining. Position Front Lining on Back Lining, right sides facing. Sew side seams and crotch seams, finish edges. Fold leg opening hem, and fold again, to create a tunnel. Topstitch tunnel almost completely, stop, and using a loop turner or safety pin, feed elastic cord through tunnel, and then secure the ends together by sewing. Elastic should be long enough to accommodate the circumference of the wearer's leg. Finish topstitching the tunnel closed.

Attach Lining to Self Position the lining to self, right sides facing, and sew all the way around.

---

## Step 5



Narrowly topstitch all the way around the fold. Then, 1/2" from that stitch line, topstitch almost all the way around, but leaving an opening to feed elastic through. 1/4" from this line, topstitch all the way around; this tunnel is for the drawstring, which you will feed through the buttonholes. Another 1/2" away, topstitch almost all the way around, again for elastic.

---

## Step 6



Cut elastic according to wearer's waist measurement, plus seam allowance. Feed elastic through tunnels with safety pin or loop turner and secure the ends. Close the tunnels with topstitching. Feed drawstrings through button holes.

---

**BurdaStyle**

Andre