

Adam

By: burdastyle

<http://www.burdastyle.com/projects/adam>



Here we are in deep winter, and we know the guys need to stay just as warm and toasty as the girls. This double-breasted winter coat is modern sophistication with classic details, AND it will keep you nice and warm.

Materials

wool, silk, interfacing, buttons, shoulder pads


Step 1

**burda Download-Pattern
Herrenmantel 6039 - Instructions**

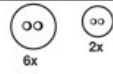

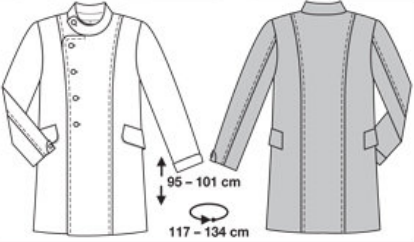
●●●●
mittel normal weit


burda sizes		55 ins / 140 cm				
		46	48	50	52	54
Coat	yds	3 1/4	3 1/4	3 1/4	3 1/4	3 1/4
	m	3.00	3.00	3.50	3.50	3.50
Lining	yds	2 1/4	2 1/4	2 1/4	2 1/4	2 1/4
	m	1.85	1.85	1.90	1.90	1.90

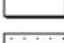
→ with nap

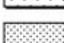



Interfacing
90 cm x 170 cm

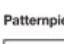




 right side

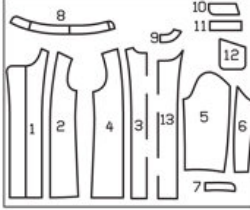
 wrong side

 interfacing

 lining

 batting

Patternpieces:



PATTERN

- 1 Center front piece 4x
- 2 Side front piece 2x
- 3 Center back piece 1x
- 4 Side back piece 2x
- 5 Front sleeve piece 2x
- 6 Back sleeve piece 2x
- 7 Sleeve placket 2x
- 8 Collar 2x
- 9 Back facing 1x
- 10 Flap 2x
- 11 Pocket welt 2x
- 12 Pocket pouch 2x
- 13 Center back piece (lining) 1x

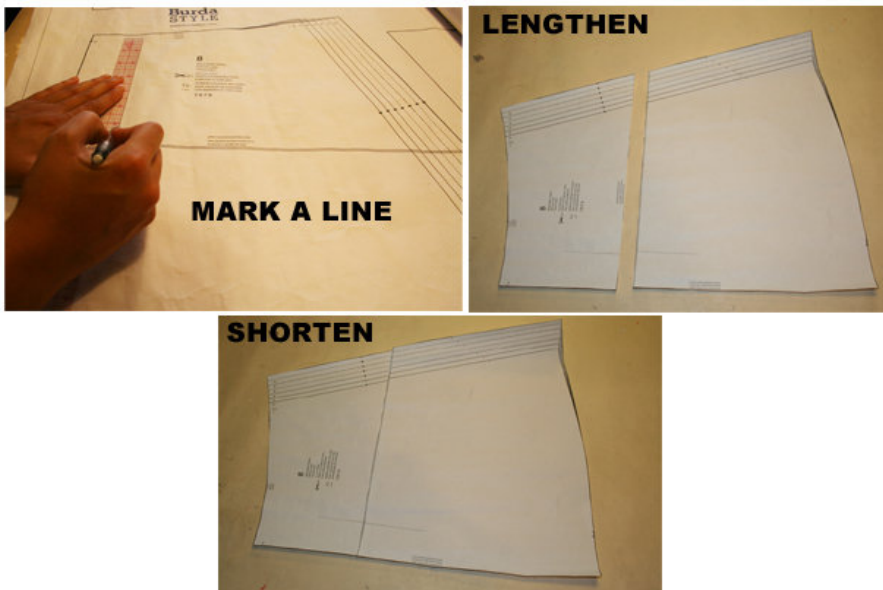
Fabrics: Wool fabrics

Step 2



The patterns can be printed out at the copy shop. If you decide to print them at home, follow the instructions: Paper cut for ANSI A (German DIN A4) prints: The patterns are printed out on 48 sheets with a thin frame. Wait until all sheets are printed out. Arrange the sheets so that they fit together (see additional page with the overview of the prints). Fold the single sheets on the upper and right edge along the thin frame lines. Begin with the left lower sheet and then tape the frame lines together precisely.

Step 3



ADJUST PATTERN SIZES

Select your size according to the Burda-dimension table: dresses, blouses, jackets and coats according to the bust size, trousers and skirts according to the hip width. Change the pattern to fit your measurements if they deviate from the Burda-size chart. Cut out the pattern pieces 1 to 13 for the men's coat according to your size.

Refer to our “ Adjust patterns for mixed sizes” technique

Sizes 40 to 43 (EU 48 to 54): On the center front piece, mark the top button hole, and mark the button spot respectively in the same way as size 39 (EU 46). For all other sizes, place these two markings with the same space to the top edge and front edge as size 39 (EU 46). The markings for the last button and button hole at the bottom are the same for all sizes. Space out the other markings equally.

LENGTHENING OR SHORTENING THE PATTERN PIECES

Our pattern is calculated for a height of 5’ 6” (168 cm). If you are taller or shorter, you can adjust the pattern pieces along the lines marked “lengthen or shorten here”. This way the proper fit is maintained.

Always adjust all pattern pieces along the same line to the same degree.

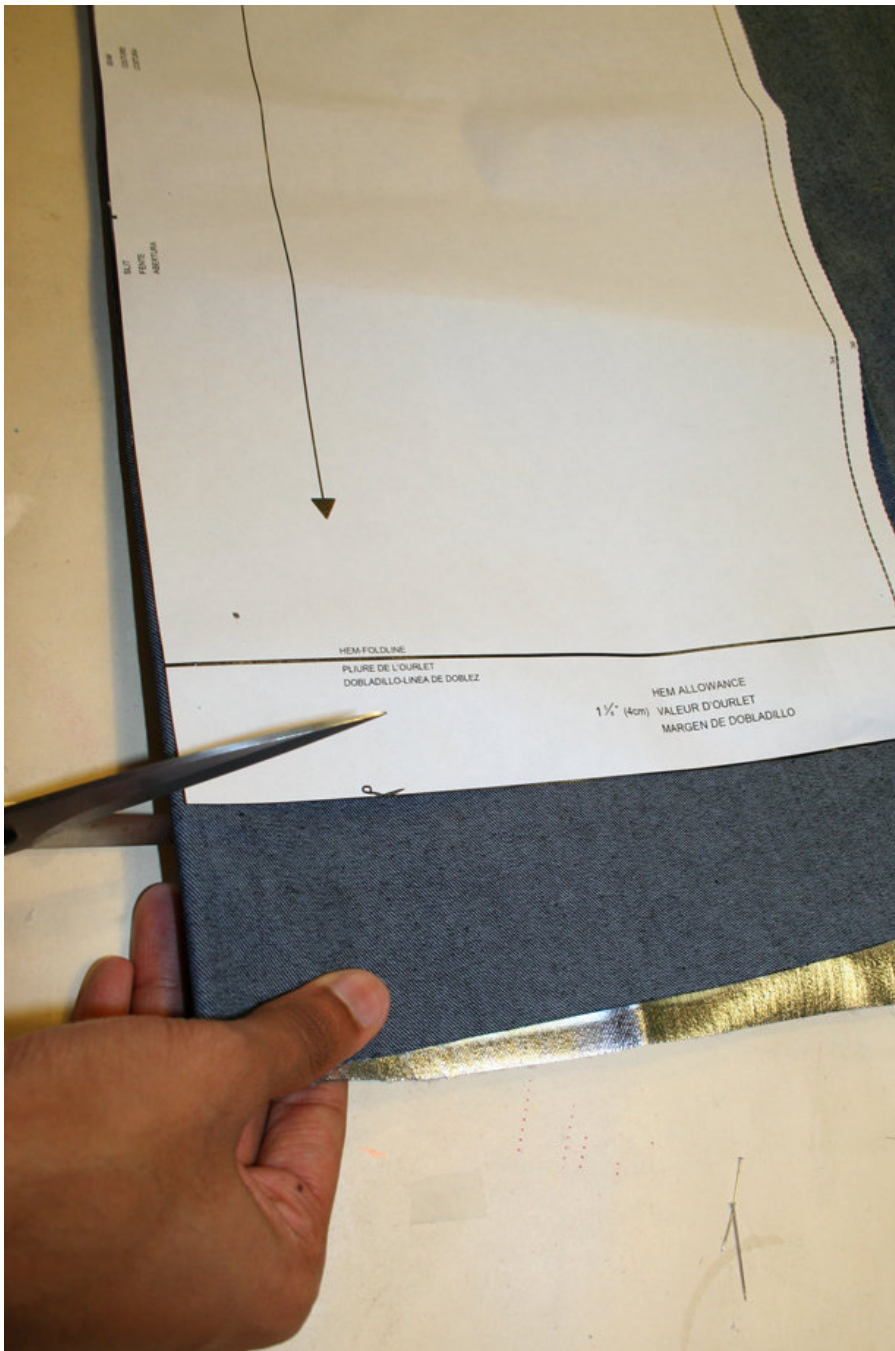
How to lengthen and shorten pattern pieces:

Cut the pattern pieces along the marked lines

To lengthen, slide the two halves of the pattern piece as far apart as necessary.

To shorten, overlap the two halves of the pattern piece as far as necessary. Blend the side edges.

Step 4



CUTTING OUT

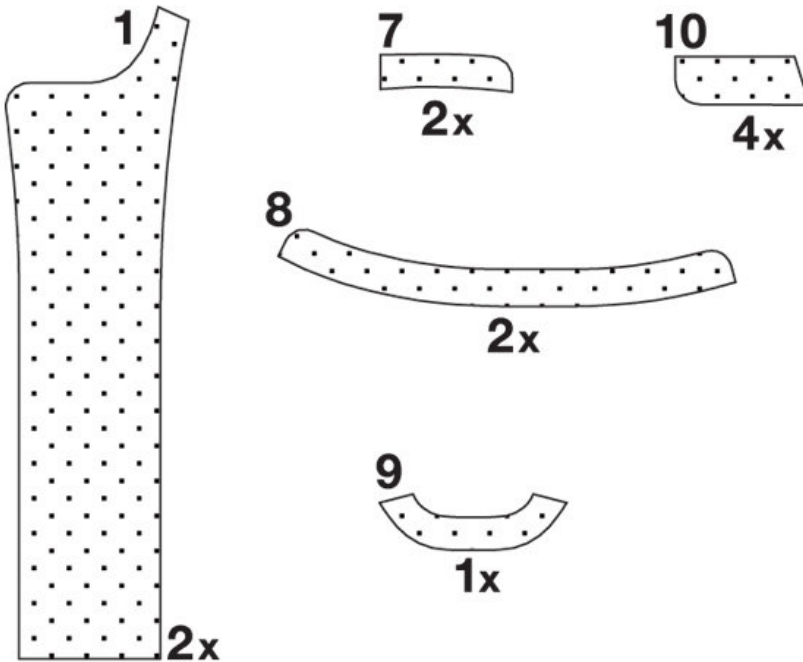
FOLD () means: Cut on the fold, the fold being the center of the pattern piece, but never a cut edge or seam. The piece should be cut double, with the fold line forming the center line. Pattern pieces are outlined with a broken line in the cutting diagrams are placed face down on the fabric. The cutting diagrams on the pattern sheet show how the pattern pieces should be placed on the fabric.

The cutting diagrams show the placement of the pattern on the fabric.

For a single layer of fabric, the pattern pieces are pinned to the right side. For double layers of fabric, the right sides are facing and the pattern pieces are pinned to the wrong side. The pattern pieces that are shown extending over the fold of the fabric in the cutting diagram should be cut last from a single layer of fabric.

Step 5

INTERFACING



SEAM AND HEMLINE ALLOWANCES are included:

2" (5 cm) for the hemline, 1" (4 cm) for the sleeve hem and 5/8" (1.5 cm) for all edges and stitches. Using BURDA copying paper, transfer the lines and signs of the pattern onto the left fabric side. Instructions can be found in the packaging.

LINING

Cut the lining pieces 2, 4 to 7, 10, 12 and 13 according to the cutting diagram.

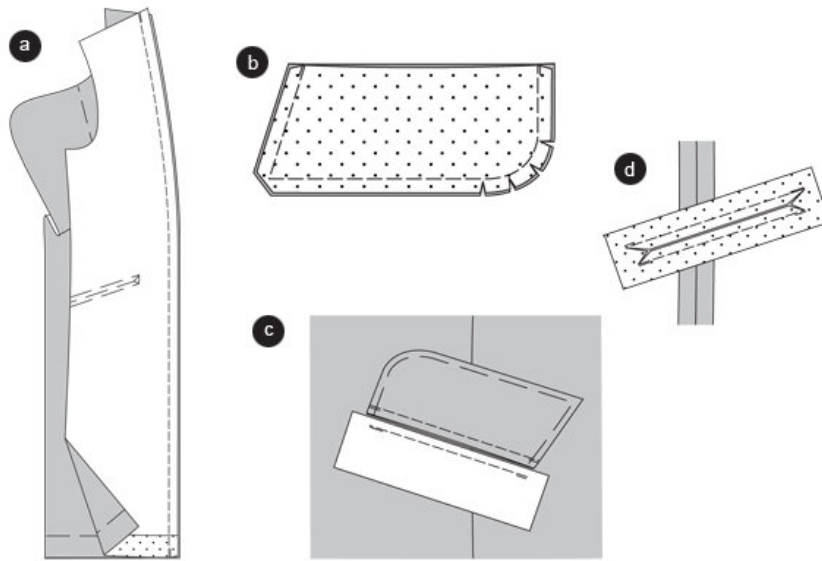
SEWING

While sewing, the right sides of the fabric are facing. Transfer all lines of the pattern onto the right side of the fabric using basting stitches.

INTERFACING

Press the interfacing piece according to the cutting diagram onto the wrong side of the fabric, onto the wrong side of the lining respectively. Press piece 7 onto the lining ONLY. Press additional interfacing strips onto the hemline allowance of the side front pieces, of the back pieces and the sleeve hemlines.

Step 6



COAT

Front princess seams

Position the side front pieces on non-interfaced center front piece, right sides facing. Pin the princess seams (seam 1). Stitch. Neaten allowances and press inside the center front piece. Topstitch the seams $\frac{1}{2}$ " (1 cm) wide and enclose the allowance (a).

SIDE SEAMS

Position the side back pieces on the front pieces, right sides facing. Stitch the side seams (seam 4). Neaten allowances and press apart.

FLAP POCKETS

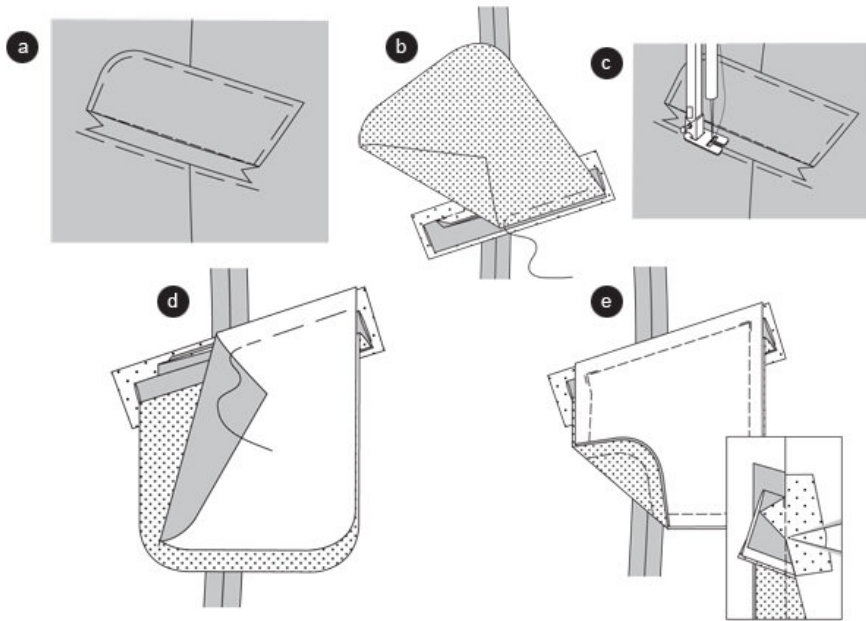
On pieces 2 and 4 the pocket lines are marked for size 39 (EU 46). Adjust the pocket lines on piece 2 according to your size. On piece 4, mark the pocket lines for your size in the same length as size 39 (EU 46). Cut two interfacing strips, $2\frac{1}{2}$ " (5 cm) wide and $9\frac{1}{2}$ " (22 cm) long. Press the strips above the marked pocket lines onto the wrong side of the side front and back pieces.

Position each fabric flap with a lining flap together, right sides facing. Stitch the side and bottom edges together. Trim allowances, snip in the curves and cut the corners at a slant. Turn the flaps, pin the edges and press. Pin the open edges together and trim the allowances to $\frac{1}{4}$ " (0.7 cm) (b).

Pin the flap onto the marked line. Pin the pocket welt so that it meets the flap. Stitch flap and pocket welt along the marked line. Secure seam ends. The seam line of the pocket welt is $\frac{1}{5}$ " (0.5 cm) shorter than the seam line of the flap ©.

Exactly between the stitch lines, snip in and cut a straight line, cutting the ends at a slant as pictured (d).

Step 7



Turn the pocket welt to the inside and fold it so that it fills in the cut line. Pin the pocket welt (a).

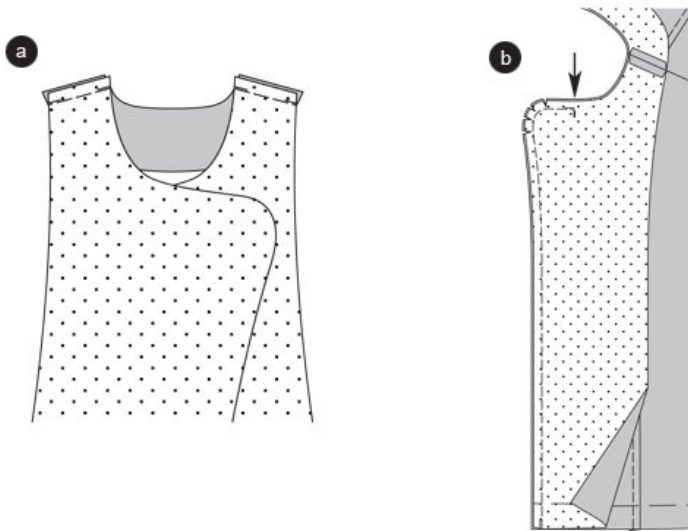
Pin the lining pocket pouch on the left side so that the edge is positioned above the seam line of the pocket welt (b)

Stitch along the stitch line of the pocket welt, enclosing the pocket pouch. Turn the pocket welt down and press. Fold the triangles at the cut ends inside ©.

Pin the fabric pocket pouch so that the even edge is positioned above the seam line of the flap. From the right fabric side, stitch along the seam line of the flap, enclosing the pocket pouch (d).

Position the pocket pouches together, trim and stitch together on the lining side of the pouch. Stitch over the triangles (e).

Step 8



BACK PRINCESS SEAMS

Position the side back pieces and center back pieces together, right sides facing. Press princess seams (seam 2) and stitch. Neaten allowances and press inside the center back piece. Topstitch the seam 1/4" (1 cm) wide enclosing the seam allowances.

SHOULDER SEAMS

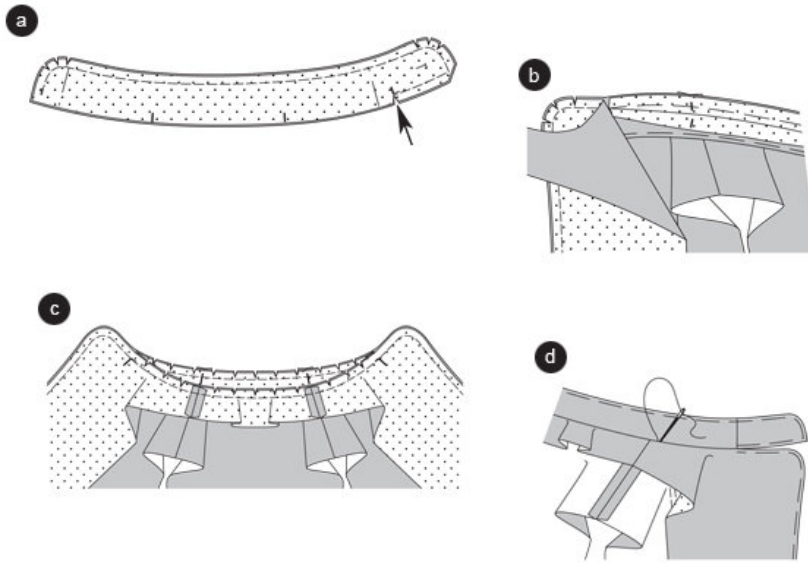
Position the front and back pieces together. Pin the shoulder seams (seam 3). The princess seams meet. Stitch. Press allowances apart.

Position the interfaced center front pieces (facings) on the back facing, right sides facing. Stitch shoulder seams (seam 3) and press allowances apart (a).

FRONT EDGES / FACINGS

From the cross line (arrow), pin the facings on the front edges, right sides facing. Stitch edges together. Trim allowances and snip in the curves (b).

Step 9



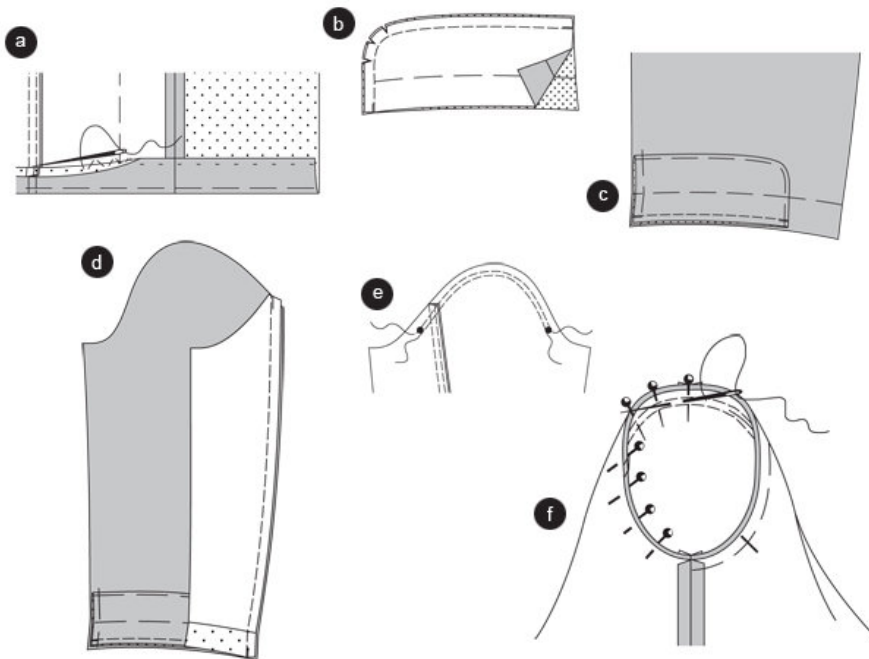
BANDED COLLAR

Position the collar pieces together, right sides facing. Stitch the edges together. To the left side, stitch the bottom edge to the cross line (arrow). To the right side, do not stitch over the allowance. Snip in the allowance (arrow). Trim allowances, snip in the curves. Cut the corner at a slant. Turn the collar, pin the edges and press (a).

Pin a collar piece on the neckline of front and back piece (seam 5), right sides facing. The loose half of the collar is overlapping the left front piece. Pin the other collar piece on the facing. The cross lines meet the shoulder seams. The right front collar seam and the left cut at the collar meet the cross lines at the neckline. Stitch (b) Trim allowances, snip in © and press apart.

Turn the collar. Turn the facings inside. Pin the edges and press. Position the collar seam lines together and stitch on the right fabric side (d).

Step 10



HEMLINE

Apply the front facing.

Neaten the hemline and turn inside, press. Sew the hemline by hand. Turn the facings inside (a).

SLEEVE PLACKET

Position a fabric and lining placket, each, together; right sides facing. Pin the edges together and stitch. Trim allowances, snip in. turn the sleeve placket and press. Pin the open edges together (b).

Pin the wrong side (lining side) of the placket on the right side of the front sleeve (seam 8). The fold lines of the sleeve hemline meet. Stitch the sleeve plackets on the hemline of the sleeve ©.

SLEEVE

Position the back of the sleeve on the front piece, right sides facing. Pin the seam line (seam 6) and stitch. Press allowances inside the sleeve. Topstitch the sleeve seams 1 cm wide.

Double stitch the sleeve cap from * to * narrowly, using basting stitches. Fold the sleeve lengthwise, stitch the bottom sleeve seam (seam 7) enclosing the sleeve placket. Press allowances apart (d).

Fold the HEMLINE of the sleeve and pin, press. Stitch the hemline (e).

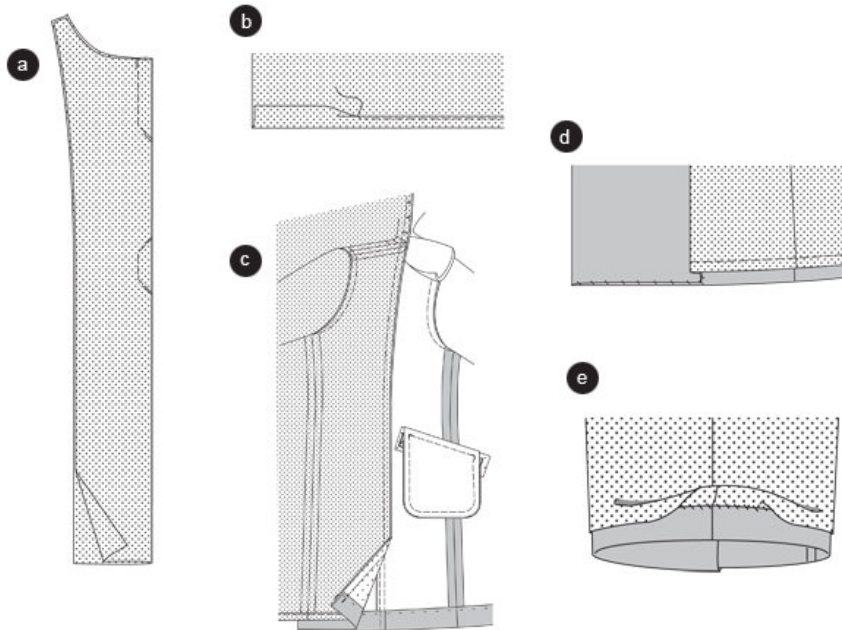
APPLY SLEEVES

To ease the width of the sleeve cap, give a basting stitch at the seam line and tighten the bobbin threads.

Apply the sleeve cap to the armhole, right sides facing. When applying, 4 points are important for the right fit: the cross lines 9 of the front part of the sleeve and the front piece have to meet. The inner sleeve seam has to meet the side seam. The cross line of the sleeve cap has to meet the shoulder seam. The eased width has to be distributed in a way that does not pucker or create pleats. Pin the sleeve on the sleeve side and stitch. Press allowances inside the sleeve (f).

Apply the SHOULDER PADS. Stitch the shoulder pads on the allowances of shoulder seam and armhole seam.

Step 11



LINING

Back pleat

Fold the back piece lengthwise, right sides facing. Stitch the pleat as marked. Press the pleat to the side. Stitch the seams of the lining pieces; same seam numbers have to meet. Apply sleeve to the lining piece. Fold the allowances of the bottom sleeve edges inside and press (a).

Fold the allowances of the bottom lining edges, fold again and topstitch narrowly (b).

Position the lining on the facing, right sides facing. The bottom lining edge meets the facing $\hat{=}$ (1.5 cm) above the hemline. The shoulder seams meet. Stitch the lining. Snip in the lining at the back neckline. Press the allowances inside the lining. Put the lining coat inside the fabric coat, wrong sides facing ©. Stitch the plackets on the hemline (d).

Slightly push the bottom edge of the sleeve lining and stitch on the sleeve hemline. Topstitch the front edges $\hat{=}$ (1 cm) to the collar seam line (e).

Work BUTTON HOLES into the center left front piece. Work the top Button hole for the button on the inside of the coat, into the right center front piece. Work a button hole into the left collar edge, $1\hat{=}$ (2.5 cm) from the edge.

Apply big BUTTONS on the marked (*) spots on the right and left center front piece. Close the buttons in the front of the coat. Fold the collar in half and mark the spot for the collar button. Apply a big button on the collar. Apply the button on the inside on the top marking on the placket.

Apply small BUTTONS on the marked spots (*) on the sleeve plackets enclosing the sleeve fabric.

BurdaStyle

Adam