

# burda style magazine 02/2010 Swing Trench Coat

By: burda style magazine

<http://www.burdastyle.com/projects/burda-style-magazine-022010-9>

---



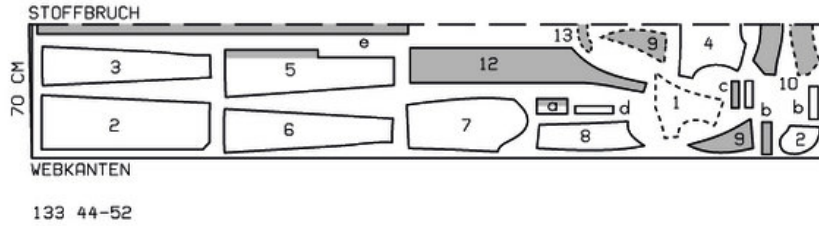
Swing Trench Coat burda style magazine patterns FAQ

## Materials

Gabardine

---

## Step 1 — Preparation



Trace the pattern pieces from the pattern sheet. Follow lines and details for style 133. Glue pieces 12 and 12a together on the joining lines. Trace pocket piece from piece 2 as a separate pattern piece, it is the same for all sizes.

For the front lining piece, lay pieces 1 and 2 together. Lay front facing on the pattern pieces and mark the lining line along inside edge of facing. Trace lining pieces to lining line.

Seam and hem allowances:

Seams and edges 1.5 cm (5/8 in), hem and sleeve hems 4 cm (15/8 ins), lining 1.5 cm (5/8 in).

## Step 2 — Cutting Out



Gabardine:

â— 1upper front 2x

â— 2centre lower front 2x

â— â— pocket piece 2x

â— 3side lower front 2x

4— upper back, on a fold 1x  
5— centre lower back 2x  
6— lower side back 2x  
7— upper sleeve 2x  
8— undersleeve 2x  
9— lapel piece 4x  
10— collar, on a fold 2x  
12— front facing 2x  
13— back facing, on a fold 1x

- a) 2 welts, 16 cm (63/8 ins) long, 8 cm (31/4 ins) wide, finished width 4 cm (15/8 ins),  
b) 4 tab pieces (sleeves), 17— 17 — 17.5 — 17.5 — 18 cm (63/4 — 63/4 — 7 — 7 — 71/8 ins) long, 5 cm (2 ins) wide,  
c) 4 tab pieces (shoulder), 14 — 14 — 14.5 — 14.5 — 15 cm (51/2 — 51/2 — 53/4 — 53/4 — 6 ins) long, 4 cm (15/8 ins) wide,  
d) 2 belt carriers, a total of 20 cm (8 ins) long, 4 cm (15/8 ins) wide (incl. allowance),  
e) belt, 195 — 200 — 205 — 210 — 215 cm (77 — 79 — 81 — 83 — 85 ins) long, 10 cm (4 ins) wide, finished width 5 cm (2 ins).

Lining: pieces 1 and 2 to lining line; piece 4 minus width of neck facing and at centre back with an ease pleat of about 2 cm (3/4 in); pieces 3, 5 to 8; and also pocket pieces.

Interfacing: See pattern layout. Also interface hem allowances.

---

### Step 3 — Bust Darts

Stitch bust darts and press to centre.

---

### Step 4 — Front Section Seams and Pockets

Front section seams and pockets in seams with welts, see style 132. Stitch pocket lining pieces onto pocket opening edges over welts, stitch fabric pocket pieces onto other pocket opening edges

---

### Step 5 — Upper and Lower Fronts

Stitch upper fronts to lower fronts. Press seam allowances up. Topstitch seams 1 cm (3/8 in) wide.

---

### Step 6 — Centre Seam and Underlap

Stitch centre seam on lower centre back pieces, leaving vent open. Press seam allowances and allowances at vent onto right back. Topstitch right back 1 cm (3/8 in) wide along seam. Press allowance at lengthwise edge of underlap to inside and stitch. Topstitch right back diagonally at top of vent as marked, catching underlap.

---

### Step 7 — Lower Side Backs, Lower Centre Back

Stitch lower side backs to lower centre back. Topstitch lower centre back along seams. Stitch upper back to lower back. Topstitch upper back along horizontal seam.

---

## Step 8 — Side Seams, Shoulder Seams and Facing Seams

Stitch side seams, shoulder seams and facing seams. Press seam allowances open.

---

## Step 9 — Notched collar and front edges

Notched collar and front edges: Lay facing right sides together with jacket, pin at front edges. Stitch along front edges, leaving about 7 cm (3 ins) open at top end of seam. Leave facing lying right sides together with jacket for now. Lay 2 lapel pieces each right sides together, stitch outer edges from marking (seam number 6), leaving about 7 cm (3 ins) open at the bottom. Do not yet turn lapel pieces right side out. Stitch collar pieces right sides together along outer edges, beginning and ending exactly on seam line. Turn collar right side out and press. Lay ends of collar between lapel pieces, stitch ends of top collar and undercollar each to top lapel edges. Press seam allowances open. Turn lapel pieces right side out. Press edges. Lay collar and lapels between jacket and facing. Stitch undercollar and underneath lapel pieces to neck edge of jacket, stitch top collar and top lapel pieces to facing. Press seam allowances of joining seams of collar and lapels open. Pin bottom ends of lapels right sides together. Stitch up remaining open seam at front edges and lapels. Turn facing to inside. Pin lapel joining seams together and go on to pin collar joining seams together exactly. Work from inside to stitch seam allowances together, close to seam, as far as possible.

---

## Step 10 — Shoulder Tabs

Lay each interfaced tab piece on a tab piece with no interfacing, right sides together, trim one end to a point. Stitch along lengthwise edges and pointed end. Turn right side out. Topstitch tabs close to edges. Work a buttonhole (small button) in faced end of tabs. Lay tabs on shoulder seams, baste to edge of neckline.

---

## Step 11 — Sleeve Tabs

Sew sleeve tabs as for shoulder tabs. Work a buttonhole (large button) in each. Baste tabs to upper sleeves between markings.

---

## Step 12 — Sleeve Seams

Stitch back sleeve seams. Topstitch upper sleeves along seam. Stitch front sleeve seams. Press sleeve hem allowances to inside and sew by hand.

---

## Step 13 — Setting in sleeves

Set in sleeves eased to fit. Press seam allowances of sleeve inset seams onto front and back above curve of underarm. Topstitch fronts and back along sleeve inset seams at the sleeve caps 1 cm (3/8 in) wide — 12 — 12 — 13 — 13 — 14 cm (43/4 — 43/4 — 51/4 — 51/4 — 51/2 ins) long in front, to back sleeve seam in back, angling stitching at start and end of seam.

---

## Step 14 — Belt Carriers

Fold strip for belt carriers lengthwise, right side facing in. Stitch 1 cm (3/8 in) next to fold edge. Turn right side out. Topstitch close to edge. Cut into 2 pieces. Sew belt carriers on over side seams as marked.

---

## Step 15 — Facings

Unfold front facings at hem and back vent facing. Press hem allowance to inside, sew on by hand. Lay facings to inside again, sew to hem allowance.

---

## Step 16 — Lapels and Collar

Topstitch front edges and edges of lapels and collar 1 cm (3/8 in) wide.

---

## Step 17 — Construct Lining

Baste ease pleat in upper back lining piece. Press pleat to one side, baste at upper and lower edge. Stitch seams and darts of lining.

---

## Step 18 — Line Coat

Stitch lining right sides together with inside edge of coat facing, leaving about 8 cm (3 1/4 ins) open at bottom. Lay lining inside coat with wrong sides facing, placing linings in sleeves. Turn in lining at back vent and underlap edge of left back. Trim other edge of lining to 1 cm (3/8 in) before hemmed edge of underlap. Clip 1 cm (3/8 in) diagonally into corner. Turn in edge of lining and pin on vent facing of right back. Turn in lining at top of vent and pin to underlap. Pin a fold about 1 cm (3/8 in) deep in lining above coat hem and sleeve hems. Turn in lining and sew to hem allowances by hand. Remove pins, lay extra length of lining down and press. Sew lining to back vent. Sew on remaining front edges of lining.

---

## Step 19 — Buttonholes

Work buttonholes in right front. Work top buttonhole for inside button in left front.

---

## Step 20 — Belt

Fold belt lengthwise, right side facing in. Trim one end at a slant. Stitch along lengthwise edge and slanted end. Turn right side out. Top-stitch close to edges and 7 mm (1/4 in) next to edges. Lay straight end of belt around bar of buckle, turn in and sew in place.

---

**BurdaStyle**

burda style magazine 02/2010 Swing Trench Coat