

# Jenny Basic Skirt

By: burdastyle

<http://www.burdastyle.com/projects/jenny-basic-skirt>

---



This is BurdaStyle's classic pencil skirt with two front darts and two back darts to attain a great fit. And this pattern download has perks: The Jenny pattern download includes instructions & supplemental pattern pieces for 4 projects: The basic skirt (featured above), the skirt with bow, the skirt with suspenders, and a dress! See

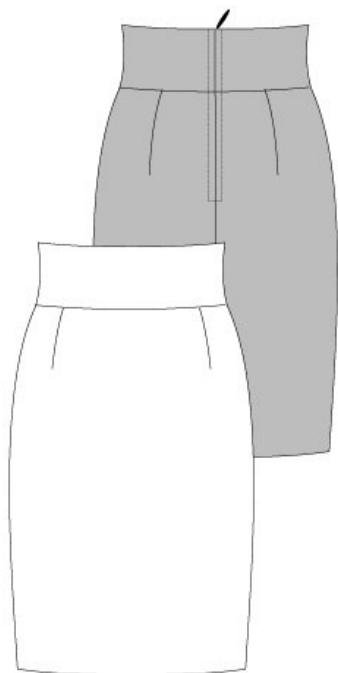
the extras below: Variation B: Add Suspenders Variation C: Add a Bow Variation D: Make it into a dress!

## Materials

Printed light wool crepe, Interfacing 36" x 16" (EU 90 x 40 cm), Zipper 12" (EU 30 cm)

---

### Step 1 — PATTERN



#### Pattern

- 1 Front skirt panel 1x
- 2 Back skirt panel 2x
- 3 Front waistband 2x
- 4 Back waistband 4x

Fabrics: Light wool fabrics

Other: Interfacing 36" x 16" (EU 90 x 40 cm)

Zipper 12" (EU 30 cm)

The patterns can be printed out at the copy shop. If you decide to print them at home, follow these instructions:

Paper cut for ANSI A (German DIN A4) prints:

The patterns are printed out on 27 sheets with a thin frame. Wait until all sheets are printed out. Arrange the sheets so that they fit together (see additional page with the overview of the prints). Fold the single sheets on the upper and right edge along the thin frame lines. Begin with the left lower sheet and then tape the frame lines together precisely.

---

## Step 2 — ADJUST PATTERN SIZES



### ADJUST PATTERN SIZES

Select your size according to the Burda-dimension table: dresses, blouses, jackets and coats according to the bust size, trousers and skirts according to the hip width. Change the pattern to fit your measurements if they deviate from the Burda-size chart. Cut out the pattern pieces according to your size.

Refer to our *Adjust patterns for mixed sizes* technique.

### LENGTHENING OR SHORTENING THE PATTERN PIECES

Our pattern is calculated for a height of 5' 6" (168 cm). If you are taller or shorter, you can adjust the pattern pieces along the lines marked "lengthen or shorten here". This way the proper fit is maintained. Always adjust all pattern pieces along the same line to the same degree.

How to lengthen and shorten pattern pieces:

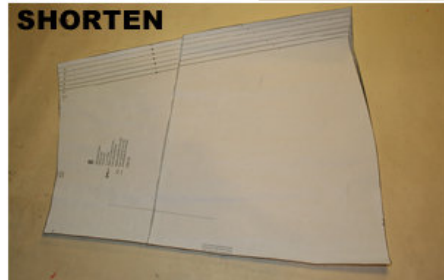
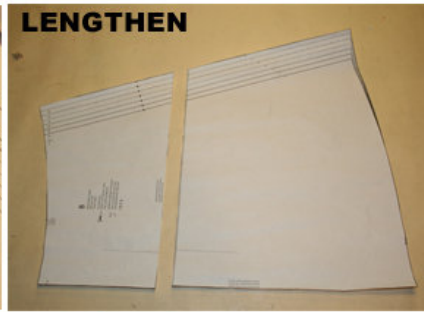
Cut the pattern pieces along the marked lines

To lengthen, slide the two halves of the pattern piece as far apart as necessary.

To shorten, overlap the two halves of the pattern piece as far as necessary. Blend the side edges.

---

## Step 3 — CUTTING OUT



### CUTTING OUT

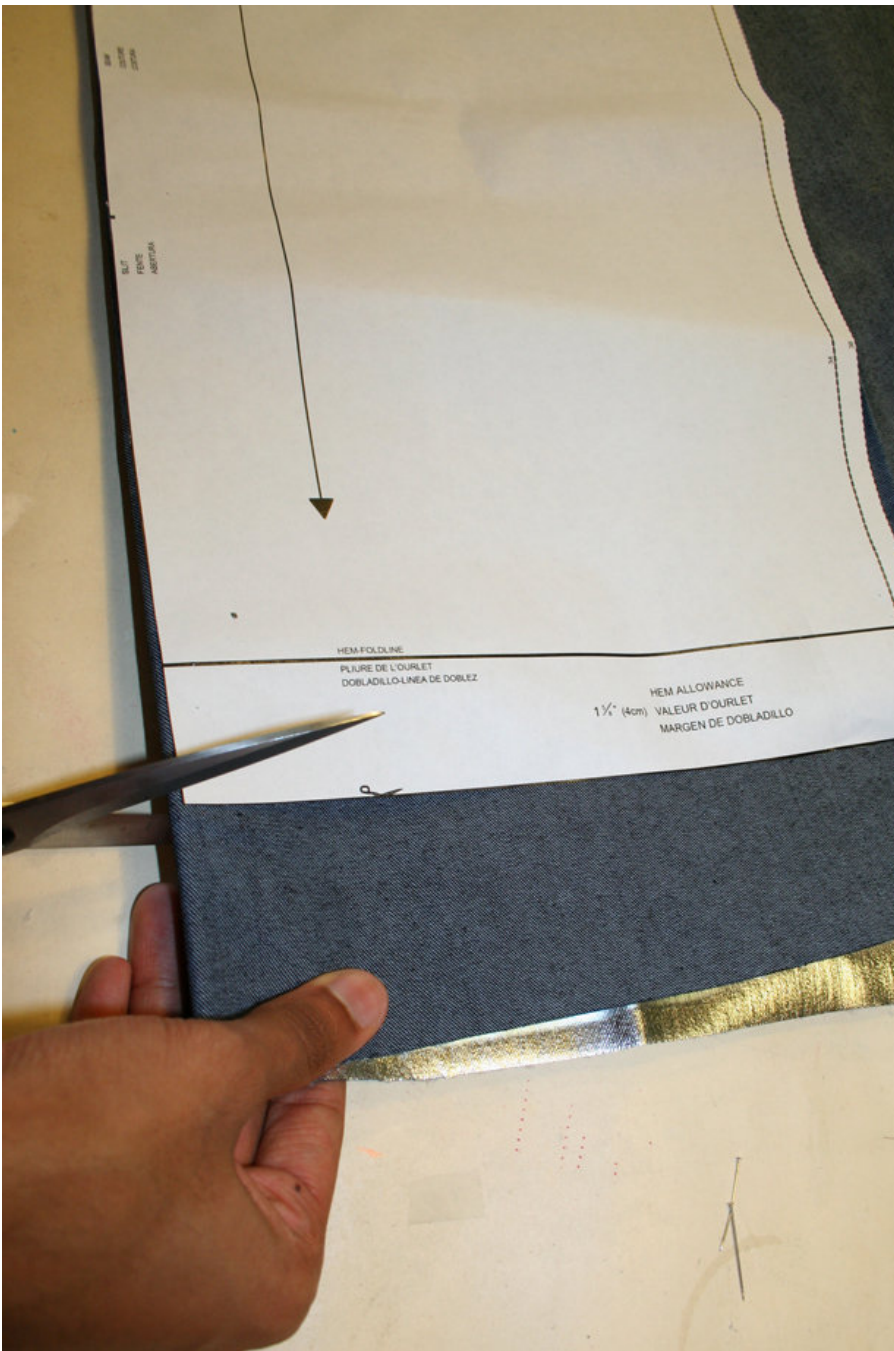
FOLD ( ) means: Cut on the fold, the fold being the center of the pattern piece, but never a cut edge or seam. The piece should be cut double, with the fold line forming the center line. Pattern pieces that are outlined with a broken line in the cutting diagrams are to be placed face down on the fabric. The cutting diagrams on the pattern sheet show how the pattern pieces should be placed on the fabric.

The cutting diagrams show the placement of the pattern on the fabric.

For a single layer of fabric, the pattern pieces are pinned to the right side. For double layers of fabric, the right sides are facing and the pattern pieces are pinned to the wrong side. The pattern pieces that are shown extending over the fold of the fabric in the cutting diagram should be cut last from a single layer of fabric.

---

## Step 4 — SEAM & HEM ALLOWANCES



**SEAM AND HEMLINE ALLOWANCES** are included on an average:  
 1 5/8" — 8" (4 cm) for hem, 5/8" (1.5 cm) for all edges and stitches. Using BURDA copying paper, transfer the lines and signs of the pattern onto the wrong side of the fabric. Instructions can be found in the packaging.

#### LINING

Cut the lining according to pattern pieces 1 and 2. See cutting diagram.

#### INTERFACING

Cut out the interfacing pieces and press onto the wrong side of the fabric.

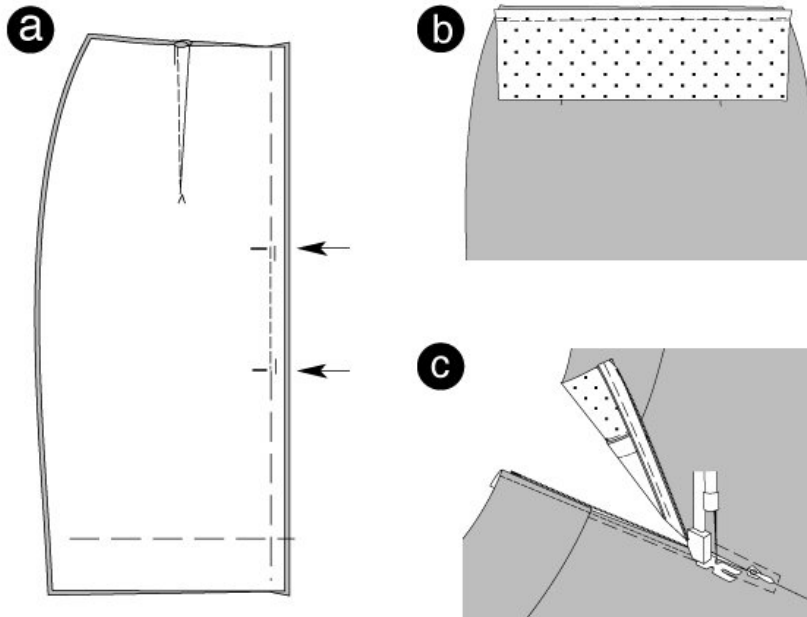
## Sewing

While sewing, the right sides of the fabric are facing.

Transfer all lines of the pattern onto the right side of the fabric using chalk.

---

### Step 5 — SKIRT



#### SKIRT

Pin the darts on front and back skirt panel. Stitch to a point. Knot thread ends. Press the darts towards the center of front and back skirt pieces.

#### CENTER BACK SEAM / SLIT

Position the back skirt panels together, right sides facing. Pin center seam. Stitch center seam between slit markings. Secure seam ends. Keep slit pinned. Neaten allowances and remove the pins. (a)

#### WAISTBAND

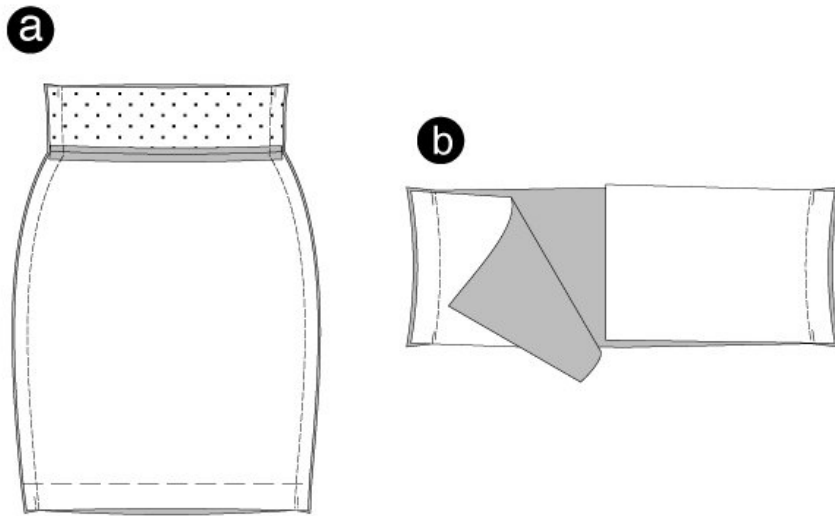
Position the interfaced front waistband piece and the front skirt panel together, right sides facing. When doing so, slightly stretch the waistband. Stitch. In the same way, stitch the interfaced back waistband piece on the back skirt panel (seam number 3). Press allowances apart. (b)

#### ZIPPER

Position the zipper under the slit edge in a way that the little teeth are hidden. Stitch the zipper using a zipper foot for your sewing machine. ©

---

### Step 6 — SIDE SEAMS



#### SIDE SEAMS

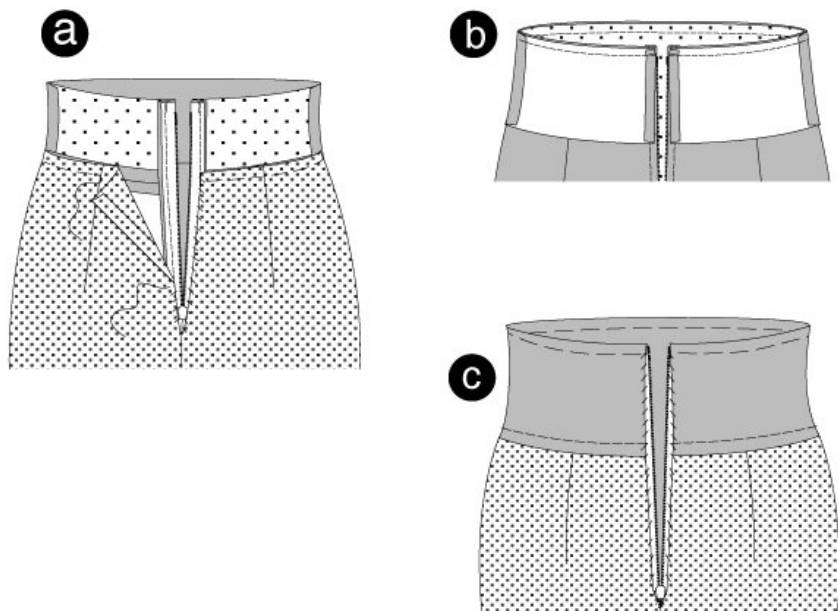
Position the front and back skirt panels together. Pin side seams (seam numbers 1, 2). The seam lines of the back and front waistbands meet. Stitch. Trim allowances and press apart. (a)

Position the back and front waistband pieces together, right sides facing. Stitch side seams. Press allowances apart. (b)

**Disregard steps 8 to 9**

---

## Step 7 — LINING



#### LINING

Stitch the darts, center back seam and side seams of the lining skirt as done to the fabric skirt. Press the opening allowances to the inside.

Position the lining on the skirt, wrong sides facing. Side seams meet. Position the top edges of skirt and lining together. Pin. Sew the opening edges by hand on the zipper strips. (a)

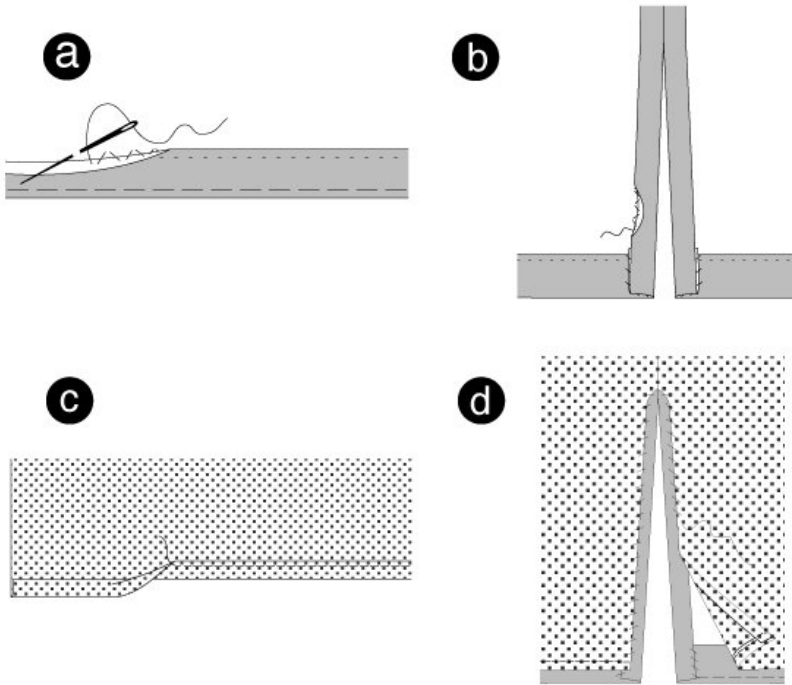
#### DOUBLE WAISTBAND

Position the non-interfaced waistband on the interfaced, already stitched waistband part, right sides facing. Pin. Side seams meet. Fold the allowance of the back waistband edges inside. Position the top edges together and pin. Stitch. Trim allowances. (b)

Turn the waistband inside, pin and press. Neaten the waistband edge. Fold it over the seam line and pin. Stitch along the seam line on the right side of the waistband, thereby slightly stretching the waistband and enclosing its inner part. ©

---

## Step 8 — HEMLINE



#### HEMLINE

Open slit allowances.

Neaten hemline. Fold and press. Sew the hemline by hand. (a) Turn the allowances and stitch onto the hemline (b).

#### LINING HEMLINE

Open allowances

Turn the hemline and press. Fold and pin. Topstitch hemline narrowly. © Turn allowances inside and press. Stitch slit edges on the slit allowances (d).

#### Disregard further steps

---

**BurdaStyle**

Jenny Basic Skirt