

5/2010 Pencil Dress

By: burda style magazine

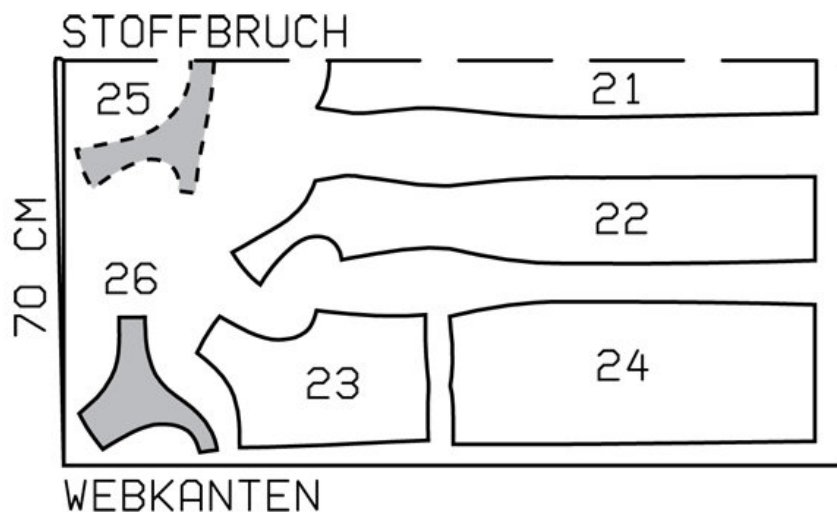
<http://www.burdastyle.com/projects/52010-pencil-dress>

Pencil dress burda style magazine patterns FAQ

Materials

Fine gabardine with crosswise stretch

Step 1 — Preparation

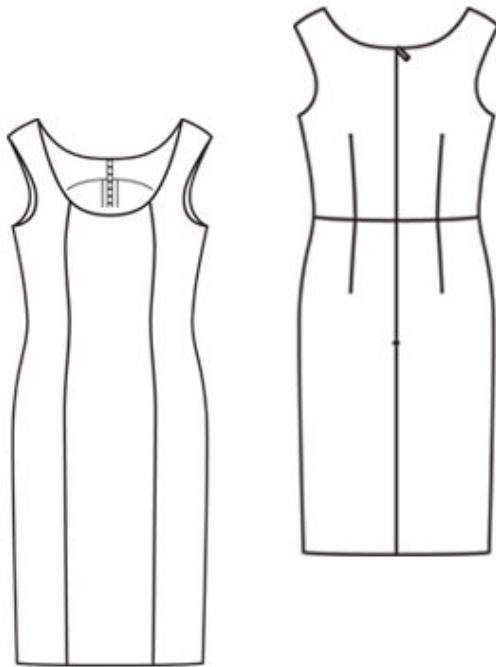


Trace the pattern pieces from the pattern sheet. Lengthen piece 21 as indicated.

Seam and hem allowances:

Seams and edges 1.5 cm (5/8 in), hem 4 cm (15/8 ins).

Step 2 — Cutting Out



21centre front, on a fold 1x
22side front 2x
23upper back 2x
24lower back 2x
25front neck facing, on a fold 1x
26back neck facing 2x
Interfacing: Iron onto facing pieces.

Step 3 — Darts

Stitch darts in upper and lower back pieces. Press darts toward centre back. Stitch upper backs to lower backs. Press seam allowances open.

Step 4 — Stitching fronts and side seams

Stitch side fronts to centre front. Stitch side seams on dress and facing.

Step 5 — Zipper

â— Sew invisible zip to back opening edges. Stitch centre back seam from lower edge to zip.

Step 6 — Neck edge and shoulder -seams

Pin facing right sides together with front and back pieces. At zip opening, turn ends of facing back about 5 cm (3/16 in) before marked seam line, and pin to neck edge. Lay allowances of dress at opening edges outward and pin to neck, over facing. Stitch along neck and armhole edges, beginning and ending 2 cm (3/4 in) below -shoulder seam lines. Trim seam allowances. Clip curves close to stitching. Turn facing and allowances on back opening edges to inside. Sew facing to zip tapes. Stitch shoulder seam edges of front and back right sides together. Reach between facing and back to pull out shoulder edges. Stitch shoulder seams of facing. Press seam allowances open — this will be easier if you slip the handle of a wooden spoon under the seams. Pull front out at shoulders slightly further and stitch remaining open edges of neck and arm-holes closed. Push shoulders in place again. Press edges.

Step 7 — Hem

Press hem allowance to inside. Sew in place by hand.

BurdaStyle

5/2010 Pencil Dress