

# Kyla

By: burdastyle

<http://www.burdastyle.com/projects/kyla>

---



What are you wearing for New Year's Eve? If you haven't decided yet, this dress is just in time! Perfectly simple and sexy, this dress is sure to please, as it can be worn many ways. Wear over tights, slacks, or jeans, and wear the lovely drape either hanging loose, or up over your shoulder(s). The hem is easily lengthened for

more coverage if you like.

## Materials

silk jersey, elastic

---

### Step 1

#### burda Download-Pattern 6033 - Instructions

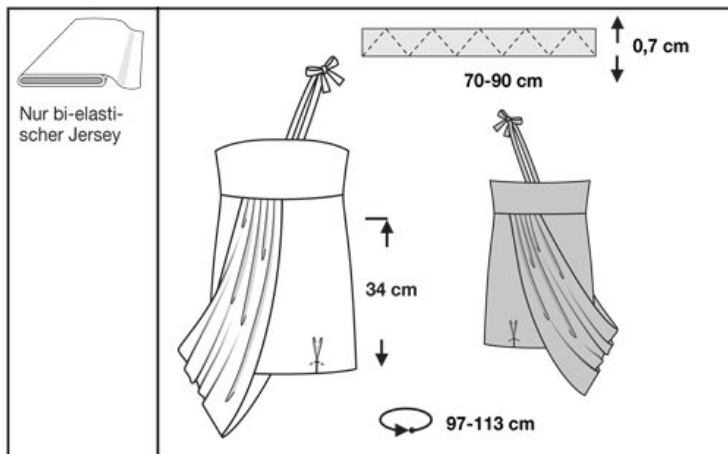


easy

close fitting

burda sizes		55 ins / 140 cm				
		34	36	38	40	42
yds		1 <sup>3</sup> / <sub>4</sub>	1 <sup>3</sup> / <sub>4</sub>	1 <sup>3</sup> / <sub>4</sub>	1 <sup>3</sup> / <sub>4</sub>	1 <sup>3</sup> / <sub>4</sub>
m		1.50	1.50	1.60	1.60	1.60
		*	*	*	*	*

\* without nap



- 1 Front piece 2x
- 2 Back piece 2x
- 3 Front and back skirt panel 2x
- 4 Pleated piece 1x
- 5 Strips 2x

Fabrics: Bi-elastic jersey fabric only

---

### Step 2



The patterns can be printed out at the copy shop. If you decide to print them at home, follow the instructions: Paper cut for ANSI A (German DIN A4) prints:  
 The patterns are printed out on 24 sheets with a thin frame. Wait until all sheets are printed out. Arrange the sheets so that they fit together (see additional page with the overview of the prints). Fold the single sheets on the upper and right edge along the thin frame lines. Begin with the left lower sheet and then tape the frame lines together precisely.

### Step 3



#### ADJUST PATTERN SIZES

Select your size according to the Burda-dimension table: dresses, blouses, jackets and coats according to the bust size, trousers and skirts according to the hip width. Change the pattern to fit your measurements if they deviate from the Burda-size chart. Cut out the pattern for the dress according to your size.

Refer to our 'Adjust patterns for mixed sizes' technique

#### LENGTHENING OR SHORTENING THE PATTERN PIECES

Our pattern is calculated for a height of 5' 6" (168 cm). If you are taller or shorter, you can adjust the pattern pieces along the lines marked "lengthen or shorten here". This way the proper fit is maintained. Always adjust all pattern pieces along the same line to the same degree.

How to lengthen and shorten pattern pieces:

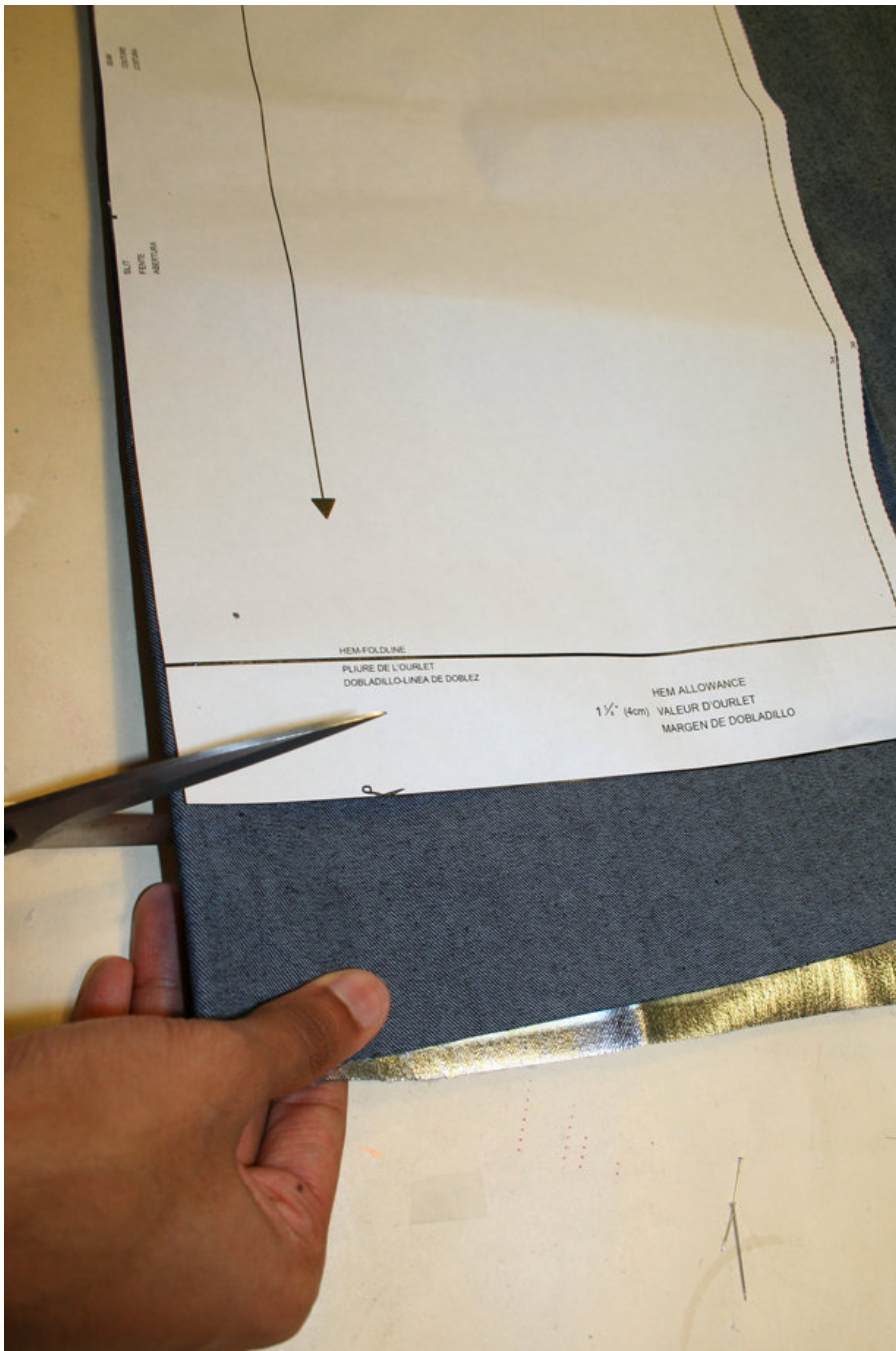
Cut the pattern pieces along the marked lines

To lengthen, slide the two halves of the pattern piece as far apart as necessary.

To shorten, overlap the two halves of the pattern piece as far as necessary. Blend the side edges.

---

## Step 4



## CUTTING OUT

**FOLD** (——) means: Cut on the fold, the fold being the center of the pattern piece, but never a cut edge or seam. The piece should be cut double, with the fold line forming the center line. Pattern pieces are outlined with a broken line in the cutting diagrams are placed face down on the fabric. The cutting diagrams on the pattern sheet show how the pattern pieces should be placed on the fabric.

The cutting diagrams show the placement of the pattern on the fabric.

For a single layer of fabric, the pattern pieces are pinned to the right side. For double layers of fabric, the right sides are facing and the pattern pieces are pinned to the wrong side. The pattern pieces that are shown extending over the fold of the fabric in the cutting diagram should be cut last from a single layer of fabric.

## Step 5

SEAM AND HEMLINE ALLOWANCES are included on an average:

No seam and no allowances at the long edges of the pleated piece? and don't neaten the edges. Otherwise 5/8" (1.5 cm) for all edges and stitches. Using BURDA copying paper, transfer the lines and signs of the pattern onto the wrong fabric side. Instructions can be found in the packaging.

### SEWING

While sewing, the right sides of the fabric are facing.

Transfer all lines of the pattern onto the right side of the fabric using basting stitches.

### ADVICE FOR WORKING WITH STRETCHY FABRICS:

You can achieve the best results from working with stretchy fabrics when using an Overlock machine. The seams will be

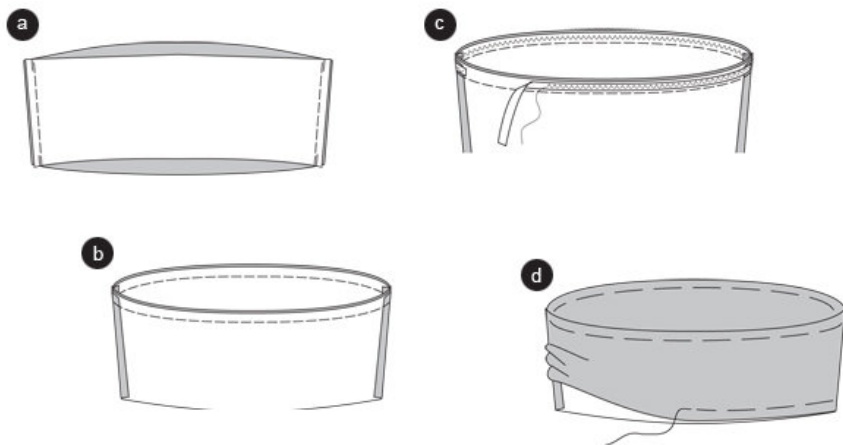
especially elastic so that they won't rip when wearing the garment. If you don't have an Overlock machine, stitch the

seams using a special elastic stitch or a narrowly adjusted zigzag stitch. Be aware that the thread tension shouldn't be

too tight. For delicate knit fabrics use a ballpoint needle that won't damage the fabric.

---

## Step 6



TOP PIECE (doubled)

SIDE SEAMS

Position the front and back pieces together, stitch side seams (seam 1). Press allowances apart (a).

Position the top pieces together, right sides facing, side seams meet. Position the top edges together and stitch. Grim allowances to HI 71 cm). You need the following lengths of elastic for

size 2 (EU M4) 28" (69 cm),

size 4 (EU M6) 29" (73 cm),

size 6 (EU M8) 31" (78 cm),

size 8 (EU 40) 32" (81 cm),

size 10 (EU 42) 34" (85 cm).

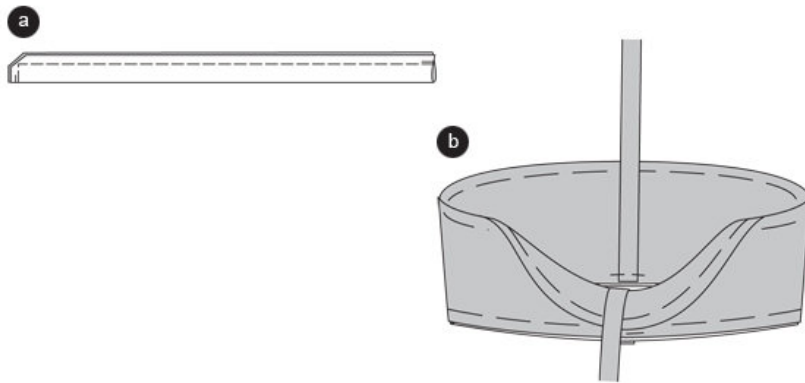
Put the ends of the elastic together so that they overlap 1 1/2" (2.5 cm), then stitch. Mark the center between those ends (b).

Stitch the elastic on the seam allowance of the top edge; the center and the ends of the elastic meet the side seams. Stretch the elastic and stitch it using narrow zigzag stitches. Make sure not to stitch beyond the elastic ©.

Fold the top piece, wrong sides facing. Press the top edge and pin the raw edges together (d).

---

## Step 7

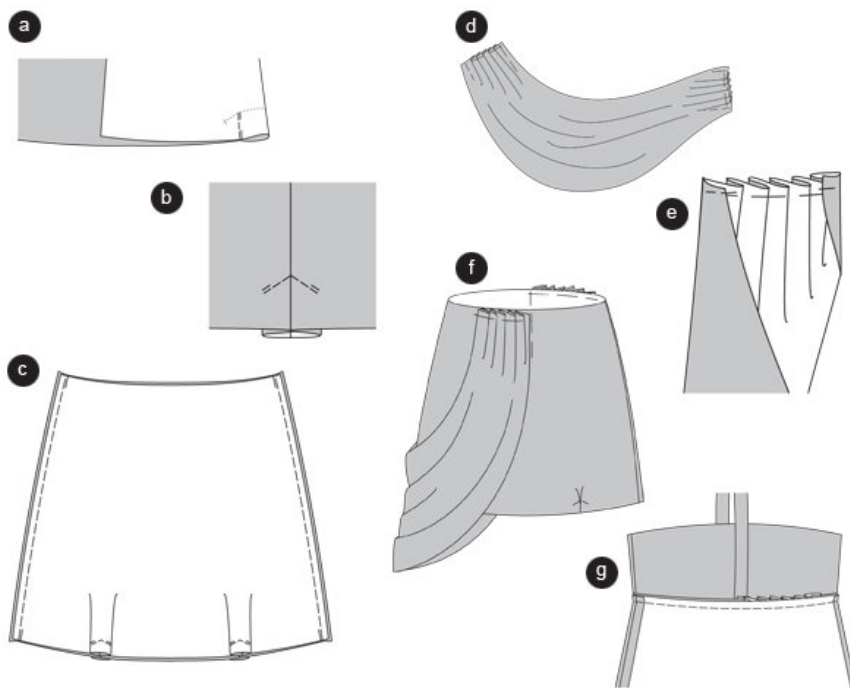


### SHOULDER STRIPS

Fold the shoulder strips lengthwise, right sides facing. Stitch the long edges and one short edge together. Trim allowances and cut the corners at angles. Turn the shoulder strip and press the edges (a). Position the raw strips ends on front and back center of the bottom edge of the top piece (b), then pin.

---

## Step 8



#### FOLD FRONT AND BACK SKIRT PANEL

Fold the pleats of the skirt panels along the center line, right sides facing. Stitch the side lines together; ending at the cross line. Secure seams ends. Fold and press the pleats so that the seam meets the center (a). Stitch the pleats on both sides in a slant as marked (b).

#### SIDE SEAMS

Position the skirt panels together, right sides facing; then stitch. Neaten allowances and press apart ©.

#### PLEATED PIECE

Position the pleats along the short edges, according to the arrows, and pin (d). Fold the side edges inside along the fold line, then pin (e).

Pin the pleated piece (from the front, respectively back center) with its short edges on the top skirt edge. The side edges meet the marked lines. The pleated piece overlaps the right side seam (f).

#### STITCH TOP PIECE

10 Pin the top piece on the top skirt edge, right sides facing; the centers and side seams meet. Stitch. Trim allowances, neaten and turn into the top piece (g).

---

**BurdaStyle**

Kyla